

lbs/ft

he-dynamic



**CERTIFIED
DYNAMIC
PERFORMANCE**

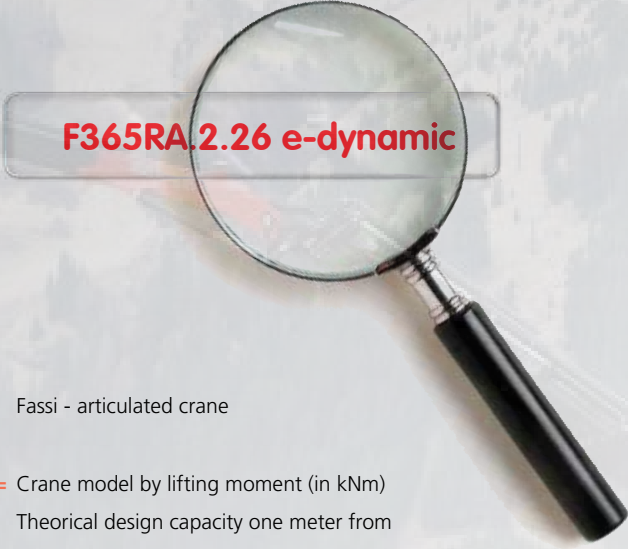
X-LARGE RANGE: F510RA.2 → F1950RAL.2 SERIES

FASSI

www.fassi.com

MODEL	PAGE
F510RA.2 he-dynamic	4
F510RA.2 he-dynamic "L serie"	7
F560RA.2 he-dynamic	8
F560RA.2 he-dynamic "L serie"	11
F600RA.2 he-dynamic	12
F600RA.2 he-dynamic "L serie"	15
F660RA.2 he-dynamic	16
F660RA.2 he-dynamic "L serie"	19
F700RA.2 he-dynamic	20
F700RA.2 he-dynamic "L serie"	23
F800RA.2 he-dynamic	24
F800RA.2 he-dynamic "L serie"	27
F950RA.2 he-dynamic	28
F950RA.2 he-dynamic "L serie"	31
F1100RA.2 he-dynamic	32
F1100RA.2 he-dynamic "L serie"	35
F1300RA.2 he dynamic	36
F1300RA.2 he-dynamic "L serie"	39
F1500RA.2 he-dynamic	40
F1500RA.2 he-dynamic "L serie"	43
F1950RA.2 he-dynamic - he-dynamic "L serie"	44
F1950RAL.2 he-dynamic - he-dynamic "L serie"	46

CRANE MODELS IDENTIFICATION NAME



F365RA.2.26 e-dynamic

- F =** Fassi - articulated crane
- 365 =** Crane model by lifting moment (in kNm)
Theoretical design capacity one meter from center of column. Example "365" kNm (264005 lbs.ft)
- R =** Continuous rotation (reported only on continuous rotation crane)
- A =** Fassi series. **Single, double or triple letter designation (A,B,C,D,E,G-Z)**. Example: series "A" (1st generation of the same lifting class). The eventual second or third letter identify a special range (ex.:C, F, FM, AS, SE, XS)
- 2 =** Number of linkage: 0-Without linkage; 1-One linkage; 2-Double linkage (on both articulations)
- 26 =** Number of articulations and hydraulic extension booms of the outer boom
Example: "2" articulations "6" extension Boom
- e-dynamic =** Identification of the crane set-up:
active; e-active; dynamic; e-dynamic; he-dynamic

SET UP DESCRIPTION

active

Related to cranes identified by "0", without linkages, dual side manual ground controls, complete with EC safety devices.

e-active

Related to cranes identified by "0", without linkages, one manual ground control, RCH/RCS radio remote control, complete with EC safety devices.

dynamic

Related to cranes identified by "1" and "2", with linkages, dual side manual ground controls, complete with EC safety devices.

e-dynamic

Related to cranes identified by "1" and "2", with linkages, one manual ground control or manual emergency one located on the column side, RCH/RCS radio remote control, eventual XP execution (where available), complete with EC safety devices.

he-dynamic

Related to cranes range from F510RA.2 to F1950RA.2, with linkage, continuous rotation, RCH/RCS radio remote control, outriggers controlled by radio remote control, eventual XP execution (where available), complete with EC safety devices.



STANDARD

he-dynamic

IMC
Integral Machine Control
control

ADC
Automatic Dynamic Control
control

D900
Digital Multifunction Distributor Bank
control

RCH/RCS
Radio Remote Control
control

FX800
Fassi Electronic Control
control

FSC
Fassi Stability Control
control

CPM
Crane Position Monitoring
control

OTC
Oil Temperature Control
control

FS
Flow Sharing
performance

XF
Extra Fast
performance

MPES
Multi Power Extension System
performance

FL
Full Lift
performance

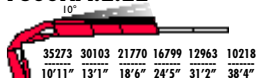
PROLINK
Progressive Link
performance

UHSS
Ultra High Strength Steel
strength

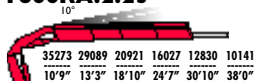
FWD
Fewer Welds Design
strength



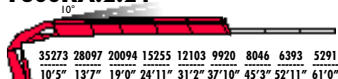
F600RA.2.22



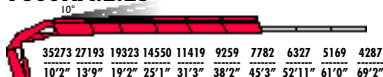
F600RA.2.23



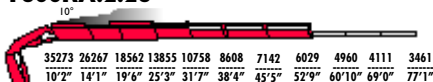
F600RA.2.24



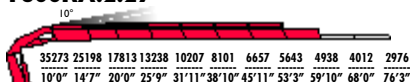
F600RA.2.25



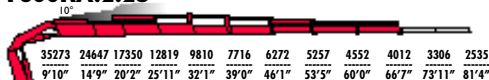
F600RA.2.26



F600RA.2.27



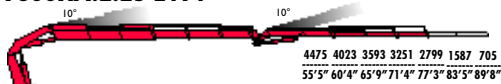
F600RA.2.28



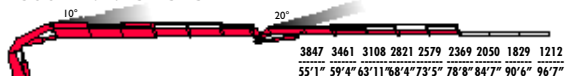
F600RA.2.22	410690	25'3"	11'3"	360°	33199	4640	18-21	66	11320	8'2"	4'11"	8'1"
F600RA.2.23	393837	31'9"	17'6"	360°	33199	4640	18-21	66	12059	8'2"	5'2"	8'1"
F600RA.2.24	382698	38'10"	24'3"	360°	33199	4640	18-21	66	12786	8'2"	5'2"	8'1"
F600RA.2.25	374525	46'3"	31'5"	360°	33199	4640	18-21	66	13470	8'2"	5'2"	8'1"
F600RA.2.26	370836	53'9"	38'8"	360°	33199	4640	18-21	66	14109	8'4"	5'2"	8'1"
F600RA.2.27	367943	60'10"	45'3"	360°	33199	4640	18-21	66	14572	8'4"	5'5"	8'1"
F600RA.2.28	364254	67'7"	51'10"	360°	33199	4640	18-21	66	14969	8'4"	5'5"	8'1"



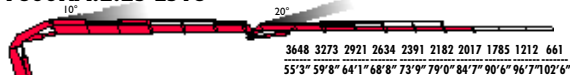
F600RA.2.25 L414



F600RA.2.25 L515



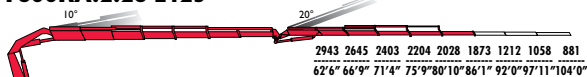
F600RA.2.25 L516



F600RA.2.26 L414



F600RA.2.26 L425



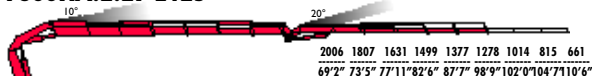
F600RA.2.26 L426



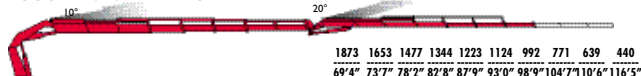
F600RA.2.27 L214



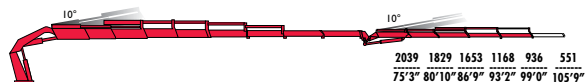
F600RA.2.27 L425



F600RA.2.27 L426



F600RA.2.28 L214



“L”
SERIE



F600RA.25 L414	374525	78'2"	53'1"	360°	33199	4640	18-21	66	15597	8'2"	5'10"	9'4"
F600RA.25 L515	374525	79'8"	55'1"	360°	33199	4640	18-21	66	16336	8'3"	5'10"	9'0"
F600RA.25 L516	374525	85'7"	60'8"	360°	33199	4640	18-21	66	16556	8'3"	5'10"	9'0"
F600RA.26 L414	370836	85'5"	60'6"	360°	33199	4640	18-21	66	16203	8'4"	5'10"	9'4"
F600RA.26 L425	370836	87'1"	62'5"	360°	33199	4640	18-21	66	16534	8'4"	5'10"	8'11"
F600RA.26 L426	370836	93'0"	68'0"	360°	33199	4640	18-21	66	16754	8'4"	5'10"	8'11"
F600RA.27 L214	367943	93'2"	69'2"	360°	33199	4640	18-21	66	16291	8'4"	6'0"	9'4"
F600RA.27 L425	367943	93'8"	69'0"	360°	33199	4640	18-21	66	16997	8'4"	6'0"	9'2"
F600RA.27 L426	367943	99'6"	74'7"	360°	33199	4640	18-21	66	17217	8'4"	6'0"	9'2"
F600RA.28 L214	364254	99'10"	75'9"	360°	33199	4640	18-21	66	16419	8'4"	6'0"	9'3"



STANDARD

IMC

Integral
Machine Control

control

ADC

Automatic
Dynamic Control

control

D900

Digital Multifunction
Distributor Bank

control

RCH/RCS

Radio Remote
Control

control

FX800

Fast Electronic
Control

control

FSC

Fast Stability
Control

control

CPM

Crane Position
Monitoring

control

OTC

Oil Temperature
Control

control

FS

Flow Sharing

performance

XF

Extra Fast

performance

MPES

Multi Power
Extension System

performance

XP

Extra Power

performance

FL

Full Lift

performance

PROLINK

Progressive
Link

performance

UHSS

Ultra High
Strength Steel

strength

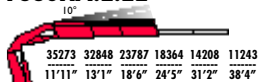
FWD

Fewer Welds
Design

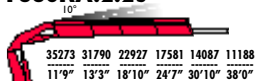
strength



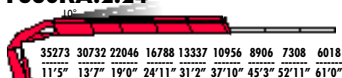
F660RA.2.22



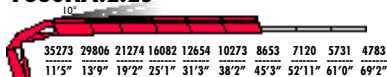
F660RA.2.23



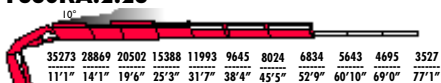
F660RA.2.24



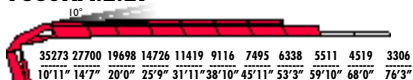
F660RA.2.25



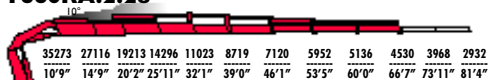
F660RA.2.26



F660RA.2.27



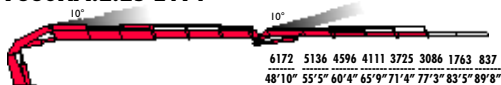
F660RA.2.28



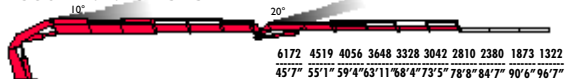
F660RA.2.22	449025	25'3"	11'1"	360°	33199	4930	18-21	66	11320	8'2"	4'11"	8'1"
F660RA.2.23	434269	31'9"	17'6"	360°	33199	4930	18-21	66	12059	8'2"	5'2"	8'1"
F660RA.2.24	419514	38'10"	24'3"	360°	33199	4930	18-21	66	12786	8'2"	5'2"	8'1"
F660RA.2.25	410690	46'3"	31'5"	360°	33199	4930	18-21	66	13470	8'2"	5'2"	8'1"
F660RA.2.26	407001	53'9"	38'8"	360°	33199	4930	18-21	66	14109	8'4"	5'2"	8'1"
F660RA.2.27	404759	60'10"	45'3"	360°	33199	4930	18-21	66	14572	8'4"	5'5"	8'1"
F660RA.2.28	400347	67'7"	51'10"	360°	33199	4930	18-21	66	14969	8'4"	5'5"	8'1"



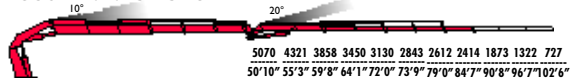
F660RA.2.25 L414



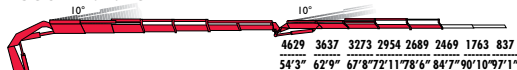
F660RA.2.25 L515



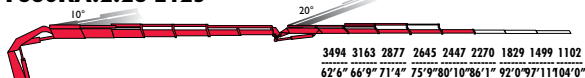
F660RA.2.25 L516



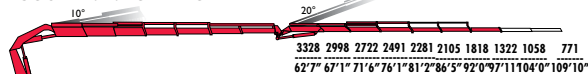
F660RA.2.26 L414



F660RA.2.26 L425



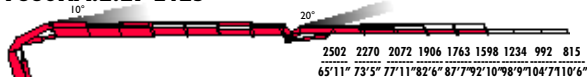
F660RA.2.26 L426



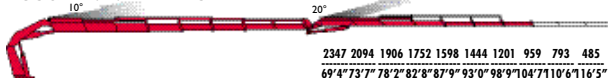
F660RA.2.27 L214



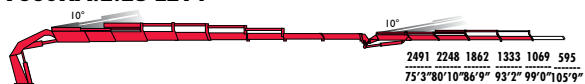
F660RA.2.27 L425



F660RA.2.27 L426



F660RA.2.28 L214



“L”
SERIE



F660RA.2.25 L414	410690	78'2"	53'1"	360°	33199	4640	18-21	66	15597	8'2"	5'10"	9'4"
F660RA.2.25 L515	410690	79'8"	55'1"	360°	33199	4640	18-21	66	16336	8'3"	5'10"	9'0"
F660RA.2.25 L516	410690	85'7"	60'8"	360°	33199	4640	18-21	66	16556	8'3"	5'10"	9'0"
F660RA.2.26 L414	407001	85'5"	60'6"	360°	33199	4640	18-21	66	16203	8'4"	5'10"	9'4"
F660RA.2.26 L425	407001	87'1"	62'5"	360°	33199	4640	18-21	66	16534	8'4"	5'10"	8'11"
F660RA.2.26 L426	407001	93'0"	68'0"	360°	33199	4640	18-21	66	16754	8'4"	5'10"	8'11"
F660RA.2.27 L214	404759	93'2"	69'2"	360°	33199	4640	18-21	66	16291	8'4"	6'0"	9'4"
F660RA.2.27 L425	404759	93'8"	69'0"	360°	33199	4640	18-21	66	16997	8'4"	6'0"	9'2"
F660RA.2.27 L426	404759	99'6"	74'7"	360°	33199	4640	18-21	66	17217	8'4"	6'0"	9'2"
F660RA.2.28 L214	400347	99'10"	75'9"	360°	33199	4640	18-21	66	16419	8'4"	6'0"	9'3"



STANDARD

IMC

Integral
Machine Control

control

ADC

Automatic
Dynamic Control

control

D900

Digital Multifunction
Distributor Bank

control

RCH/RCS

Radio Remote
Control

control

FX800

Fast Electronic
Control

control

FSC

Fast Stability
Control

control

CPM

Crane Position
Monitoring

control

OTC

Oil Temperature
Control

control

FS

Flow Sharing

performance

XF

Extra Fast

performance

MPES

Multi Power
Extension System

performance

FL

Full Lift

performance

PROLINK

Progressive
Link

performance

UHSS

Ultra High
Strength Steel

strength

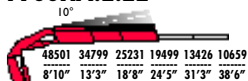
FWD

Fewer Welds
Design

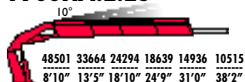
strength



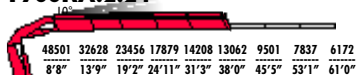
F700RA.2.22



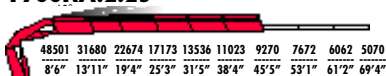
F700RA.2.23



F700RA.2.24



F700RA.2.25



F700RA.2.26



F700RA.2.27



F700RA.2.28



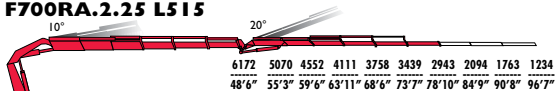
F700RA.2.22	476293	25'3"	11'1"	CONTINUOUS	360	66399	4430	21-26	70	13448	8'2"	5'0"	8'1"
F700RA.2.23	463057	31'9"	17'6"		360	66399	4430	21-26	70	14219	8'2"	5'3"	8'1"
F700RA.2.24	450471	38'10"	24'3"		360	66399	4430	21-26	70	14881	8'2"	5'3"	8'1"
F700RA.2.25	441647	46'3"	31'5"		360	66399	4430	21-26	70	15542	8'2"	5'3"	8'1"
F700RA.2.26	437958	53'9"	38'8"		360	66399	4430	21-26	70	16203	8'4"	5'3"	8'1"
F700RA.2.27	429857	60'10"	45'3"		360	66399	4430	21-26	70	16644	8'4"	5'6"	8'1"
F700RA.2.28	431304	67'7"	51'10"		360	66399	4430	21-26	70	17085	8'4"	5'6"	8'1"

F700RA.2 L he-dynamic

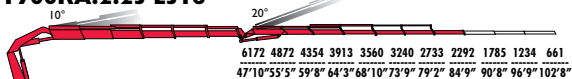
24



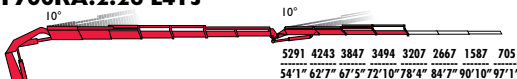
F700RA.2.25 L515



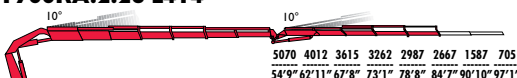
F700RA.2.25 L516



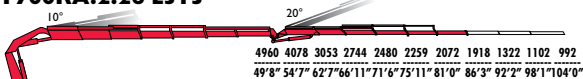
F700RA.2.26 L413



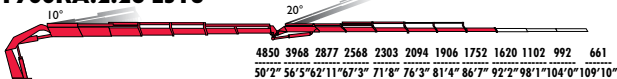
F700RA.2.26 L414



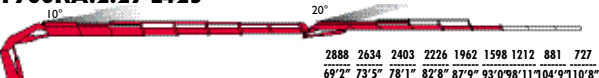
F700RA.2.26 L515



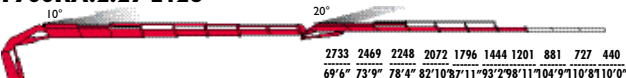
F700RA.2.26 L516



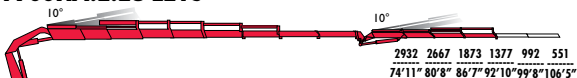
F700RA.2.27 L425



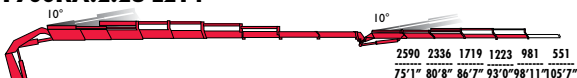
F700RA.2.27 L426



F700RA.2.28 L213



F700RA.2.28 L214



**“L”
SERIE**



F700RA.2.25 L515	441647	80'0"	54'11"	360	66399	4430	21-26	70	18408	8'4"	5'10"	9'0"
F700RA.2.25 L516	441647	85'7"	60'8"	360	66399	4430	21-26	70	18628	8'4"	5'10"	9'0"
F700RA.2.26 L413	437958	79'2"	54'3"	360	66399	4430	21-26	70	18298	8'4"	5'10"	9'3"
F700RA.2.26 L414	437958	85'5"	60'6"	360	66399	4430	21-26	70	18518	8'4"	5'10"	9'3"
F700RA.2.26 L515	437958	86'11"	62'4"	360	66399	4430	21-26	70	19422	8'4"	5'10"	8'11"
F700RA.2.26 L516	437958	92'10"	68'0"	360	66399	4430	21-26	70	19731	8'4"	6'0"	8'11"
F700RA.2.27 L425	429857	93'9"	21,00	360	66399	4430	21-26	70	19069	8'4"	6'1"	9'2"
F700RA.2.27 L426	429857	99'6"	74'7"	360	66399	4430	21-26	70	19290	8'4"	6'1"	9'2"
F700RA.2.28 L213	431304	93'11"	21,30	360	66399	4430	21-26	70	18562	8'4"	6'1"	9'3"
F700RA.2.28 L214	431304	99'10"	75'9"	360	66399	4430	21-26	70	18739	8'4"	6'1"	9'3"



STANDARD

he-dynamic

IMC
Integral Machine Control
control

ADC
Automatic Dynamic Control
control

D900
Digital Multifunction Distributor Bank
control

RCH/RCS
Radio Remote Control
control

FX800
Fast Electronic Control
control

FSC
Fast Stability Control
control

CPM
Crane Position Monitoring
control

OTC
Oil Temperature Control
control

FS
Flow Sharing
performance

XF
Extra Fast
performance

MPES
Multi Power Extension System
performance

XP
Extra Power
performance

FL
Full Lift
performance

PROLINK
Progressive Link
performance

JDP
Jib Dual Power
performance



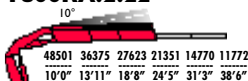
"JDP" activation (Jib dual power) compulsory for versions .27 with hydraulic extensions "L425", "L426"

UHSS
Ultra High Strength Steel
strength

FWD
Fewer Welds Design
strength



F800RA.2.22



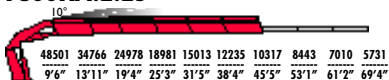
F800RA.2.23



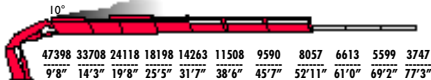
F800RA.2.24



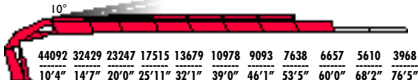
F800RA.2.25



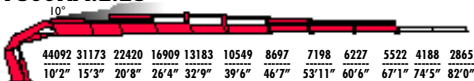
F800RA.2.26



F800RA.2.27



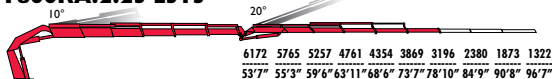
F800RA.2.28



Model	Code	25°3"	11°1"	360	66399	4790	21-26	70	13448	8'2"	5'0"	8'1"
F800RA.2.22	522006	25°3"	11°1"	360	66399	4790	21-26	70	13448	8'2"	5'0"	8'1"
F800RA.2.23	509493	31°9"	17°6"	360	66399	4790	21-26	70	14219	8'2"	5'3"	8'1"
F800RA.2.24	494737	38°10"	24°3"	360	66399	4790	21-26	70	14881	8'2"	5'3"	8'1"
F800RA.2.25	484394	46°3"	31°5"	360	66399	4790	21-26	70	15542	8'2"	5'3"	8'1"
F800RA.2.26	480705	53°9"	38°8"	360	66399	4790	21-26	70	16203	8'4"	5'3"	8'1"
F800RA.2.27	473328	60°10"	45°3"	360	66399	4790	21-26	70	16644	8'4"	5'6"	8'1"
F800RA.2.28	475570	67°7"	51°10"	360	66399	4790	21-26	70	17085	8'4"	5'6"	8'1"



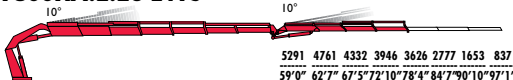
F800RA.2.25 L515



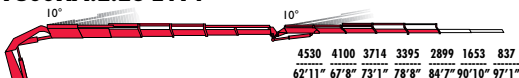
F800RA.2.25 L516



F800RA.2.26 L413



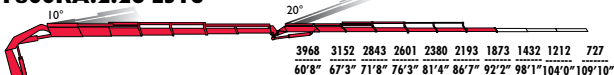
F800RA.2.26 L414



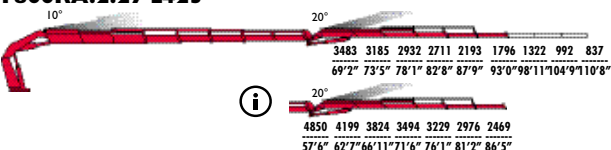
F800RA.2.26 L515



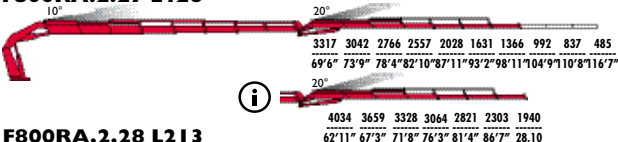
F800RA.2.26 L516



F800RA.2.27 L425



F800RA.2.27 L426



F800RA.2.28 L213



F800RA.2.28 L214



“L”
SERIE



Model	Weight	Height	Capacity	Length	Width	Height	Height	Height	Height	Height	Height	
F800RA.2.25 L515	484394	24,40	54'11"	360	66399	4790	21-26	70	18408	8'3"	5'10"	9'0"
F800RA.2.25 L516	484394	85'7"	60'8"	360	66399	4790	21-26	70	18628	8'3"	5'10"	9'0"
F800RA.2.26 L413	480705	79'2"	54'3"	360	66399	4790	21-26	70	18298	8'4"	5'10"	9'3"
F800RA.2.26 L414	480705	85'5"	60'6"	360	66399	4790	21-26	70	18518	8'4"	5'10"	9'3"
F800RA.2.26 L515	480705	86'11"	62'4"	360	66399	4790	21-26	70	19422	8'4"	5'10"	8'11"
F800RA.2.26 L516	480705	92'10"	68'0"	360	66399	4790	21-26	70	19731	8'4"	5'10"	8'11"
F800RA.2.27 L425	473328	93'9"	68'10"	360	66399	4790	21-26	70	19069	8'4"	6'1"	9'2"
F800RA.2.27 L426	473328	99'6"	74'7"	360	66399	4790	21-26	70	19290	8'4"	6'1"	9'2"
F800RA.2.28 L213	475570	93'11"	69'10"	360	66399	4790	21-26	70	18562	8'4"	6'1"	9'3"
F800RA.2.28 L214	475570	99'10"	75'9"	360	66399	4790	21-26	70	18739	8'4"	6'1"	9'3"



STANDARD

he-dynamic

IMC
Integral
Machine Control
control

ADC
Automatic
Dynamic Control
control

D900
Digital Multifunction
Distributor Bank
control

RCH/RCS
Radio Remote
Control
control

FX800
Fast Electronic
Control
control

FSC
Fast Stability
Control
control

CPM
Crane Position
Monitoring
control

OTC
Oil Temperature
Control
control

FS
Flow Sharing
performance

XF
Extra Fast
performance

MPES
Multi Power
Extension System
performance

XP
Extra Power
performance

FL
Full Lift
performance

PROLINK
Progressive
Link
performance

JDP
Jib Dual Power
performance



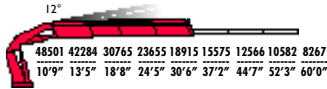
"JDP" activation (Jib dual power) compulsory for versions .27 with hydraulic extensions "L615", "L616" and for versions .28 with hydraulic extensions "L425", "L426", "L616"

UHSS
Ultra High
Strength Steel
strength

FWD
Fewer Welds
Design
strength



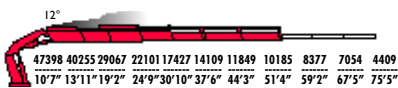
F950RA.2.24



F950RA.2.25



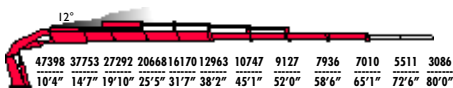
F950RA.2.26



F950RA.2.27



F950RA.2.28



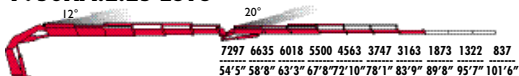
F950RA.2.24	580231	38'2"	23'9"	360	59021	4720	21-26	70	16225	8'3"	5'10"	8'5"
F950RA.2.25	561859	45'1"	30'6"	360	59021	4720	21-26	70	17030	8'3"	5'10"	8'5"
F950RA.2.26	561064	52'3"	37'4"	360	59021	4720	21-26	70	17835	8'3"	5'10"	8'5"
F950RA.2.27	555928	59'2"	43'11"	360	59021	4720	21-26	70	18419	8'3"	6'1"	8'5"
F950RA.2.28	551516	66'1"	50'6"	360	59021	4720	21-26	70	18893	8'3"	6'1"	8'5"

F950RA.2 L he-dynamic

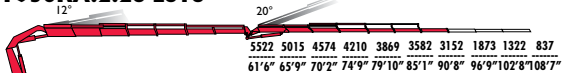
32



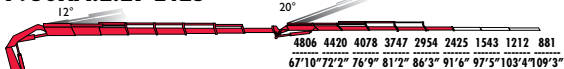
F950RA.2.25 L616



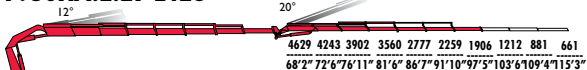
F950RA.2.26 L616



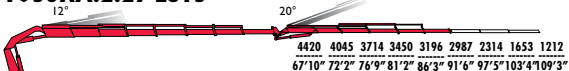
F950RA.2.27 L425



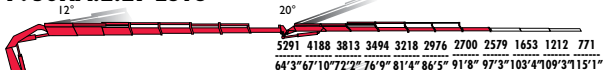
F950RA.2.27 L426



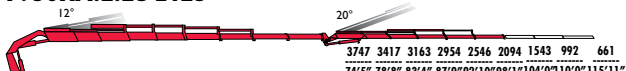
F950RA.2.27 L615



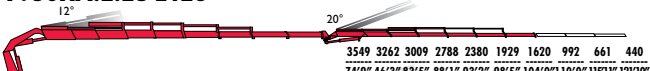
F950RA.2.27 L616



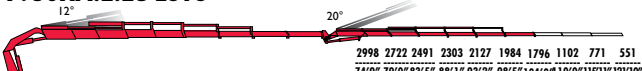
F950RA.2.28 L425



F950RA.2.28 L426



F950RA.2.28 L616



“L”
SERIE



F950RA.2.25 L616	561859	84'11"	60'0"	360	59021	4720	21-26	70	20480	8'4"	6'5"	9'4"
F950RA.2.26 L616	561064	91'8"	66'9"	360	59021	4720	21-26	70	21219	8'4"	6'5"	9'4"
F950RA.2.27 L425	555928	95'9"	71'0"	360	59021	4720	21-26	70	21053	8'4"	6'8"	9'6"
F950RA.2.27 L426	555928	98'5"	73'3"	360	59021	4720	21-26	70	21274	8'4"	6'8"	9'6"
F950RA.2.27 L615	555928	92'4"	67'8"	360	59021	4720	21-26	70	21583	8'4"	6'8"	8'7"
F950RA.2.27 L616	555928	98'3"	73'5"	360	59021	4720	21-26	70	21803	8'4"	20'2"	9'3"
F950RA.2.28 L425	551516	99'0"	74'3"	360	59021	4720	21-26	70	21472	8'4"	20'2"	9'6"
F950RA.2.28 L426	551516	104'11"	79'10"	360	59021	4720	21-26	70	21693	8'4"	20'2"	9'6"
F950RA.2.28 L616	551516	104'11"	80'0"	360	59021	4720	21-26	70	22266	8'4"	6'8"	9'6"



STANDARD

IMC
Integral
Machine Control
control

ADC
Automatic
Dynamic Control
control

D900
Digital Multifunction
Distributor Bank
control

RCH/RCS
Radio Remote
Control
control

FX800
Fawl Electronic
Control
control

FSC
Fawl Stability
Control
control

CPM
Crane Position
Monitoring
control

OTC
Oil Temperature
Control
control

FS
Flow Sharing
performance

XF
Extra Fast
performance

MPES
Multi Power
Extension System
performance

XP
Extra Power
performance

FL
Full Lift
performance

PROLINK
Progressive
Link
performance

JDP
Jib Dual Power
performance



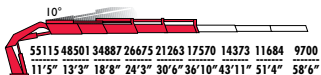
"JDP" activation (Jib dual power) compulsory for versions .28 with hydraulic extensions "L516", "L616"

UHSS
Ultra High
Strength Steel
strength

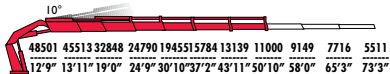
FWD
Fewer Welds
Design
strength



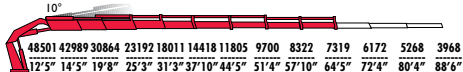
FI 100RA.2.24



FI 100RA.2.26



FI 100RA.2.28



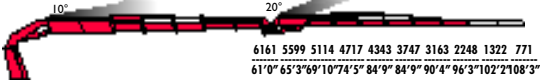
FI 100RA.2.24	652489	37'10"	23'5"	360	73777	4860	24-29	70	19224	8'4"	6'3"	8'5"
FI 100RA.2.26	634840	51'10"	36'10"	360	73777	4860	24-29	70	20613	8'4"	6'3"	8'5"
FI 100RA.2.28	620808	65'7"	50'0"	360	73777	4860	24-29	70	22707	8'4"	6'9"	8'5"



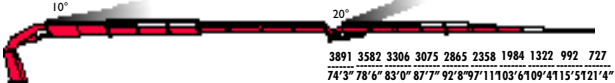


**“L”
SERIE**

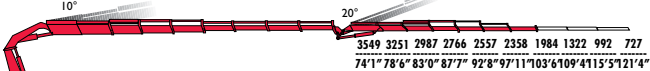
FI 100RA.2.26 L616



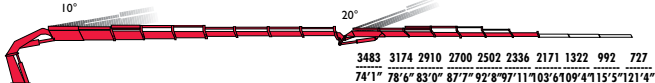
FI 100RA.2.28 L426



FI 100RA.2.28 L516



FI 100RA.2.28 L616



FI 100RA.2.26 L616	634840	91'4"	66'3"	360	73777	4860	24-29	70	24030	8'4"	6'10"	9'5"
FI 100RA.2.28 L426	620808	104'5"	79'4"	360	73777	4860	24-29	70	24581	8'4"	7'2"	9'5"
FI 100RA.2.28 L516	620808	104'5"	79'4"	360	73777	4860	24-29	70	26014	8'4"	7'2"	9'5"
FI 100RA.2.28 L616	620808	104'5"	79'4"	360	73777	4860	24-29	70	26124	8'4"	7'2"	9'5"



STANDARD

IMC
Integral Machine Control
control

ADC
Automatic Dynamic Control
control

D900
Digital Multifunction Distributor Bank
control

RCH/RCS
Radio Remote Control
control

FX800
Fassi Electronic Control
control

FSC
Fassi Stability Control
control

CPM
Crane Position Monitoring
control

OTC
Oil Temperature Control
control

FS
Flow Sharing
performance

XF
Extra Fast
performance

MPES
Multi Power Extension System
performance

XP
Extra Power
performance

FL
Full Lift
performance

PROLINK
Progressive Link
performance

JDP
Jib Dual Power
performance



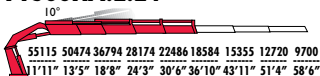
"JDP" activation (Jib dual power) compulsory for versions .28 with hydraulic extensions "L516", "L616"

UHSS
Ultra High Strength Steel
strength

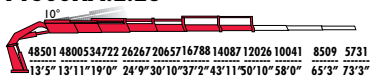
FWD
Fewer Welds Design
strength



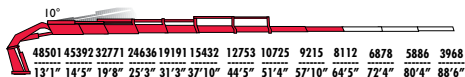
FI 300RA.2.24



FI 300RA.2.26



FI 300RA.2.28



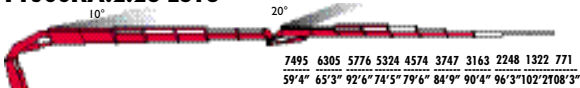
FI 300RA.2.24	687931	37'10"	23'3"	360	73777	4860	24-29	69+69	21384	8'4"	9'3"	8'0"
FI 300RA.2.26	669486	51'10"	36'10"	360	73777	4860	24-29	69+69	23148	8'4"	9'3"	8'0"
FI 300RA.2.28	655454	65'7"	50'0"	360	73777	4860	24-29	69+69	24691	8'4"	9'3"	8'0"



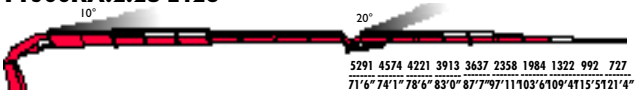


“L”
SERIE

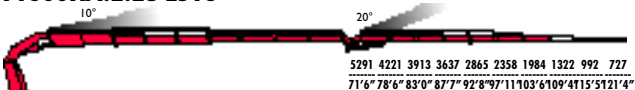
FI300RA.2.26 L616



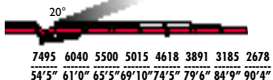
FI300RA.2.28 L426



FI300RA.2.28 L516

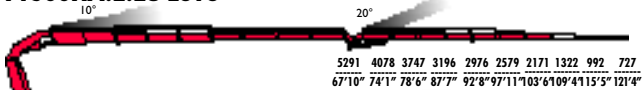


i

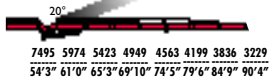


i

FI300RA.2.28 L616



i



FI300RA.2.26 L616	669486	91'4"	66'3"	360	73777	4860	24-29	69+69	26455	8'4"	9'3"	9'0"
FI300RA.2.28 L426	655454	104'5"	79'4"	360	73777	4860	24-29	69+69	27447	8'4"	9'3"	9'0"
FI300RA.2.28 L516	655454	104'5"	79'4"	360	73777	4860	24-29	69+69	27888	8'4"	9'3"	9'0"
FI300RA.2.28 L616	655454	104'5"	79'4"	360	73777	4860	24-29	69+69	27998	8'4"	9'3"	9'0"



STANDARD

IMC
Integral Machine Control
control

ADC
Automatic Dynamic Control
control

D900
Digital Multifunction Distributor Bank
control

RCH/RCS
Radio Remote Control
control

FX800
Fast Electronic Control
control

FSC
Fast Stability Control
control

CPM
Crane Position Monitoring
control

OTC
Oil Temperature Control
control

FS
Flow Sharing
performance

XF
Extra Fast
performance

MPES
Multi Power Extension System
performance

XP
Extra Power
performance

FL
Full Lift
performance

JDP
Jib Dual Power
performance



"JDP" activation (Jib dual power) compulsory for versions .28 with hydraulic extension

UHSS
Ultra High Strength Steel
strength

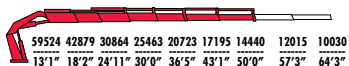
FWD
Fewer Welds Design
strength



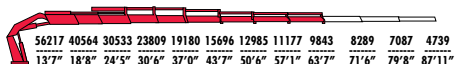
FI 500RA.2.24



FI 500RA.2.26



FI 500RA.2.28



FI 500RA.2.24	819137	37'0"	23'3"	360	95910	4790	26+26	69+69	25551	8'4"	9'7"	8'6"
FI 500RA.2.26	780079	51'0"	36'10"	360	95910	4790	26+26	69+69	27480	8'4"	9'7"	8'6"
FI 500RA.2.28	765324	64'9"	50'2"	360	95910	4790	26+26	69+69	28814	8'4"	9'7"	8'6"

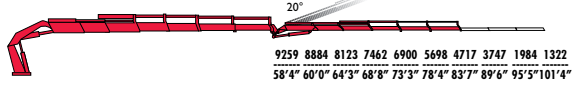
FI 500RA.2 L he-dynamic

44

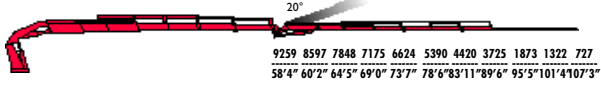




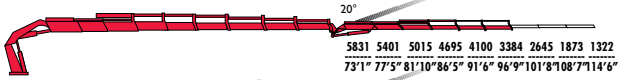
FI 500RA.2.26 L815



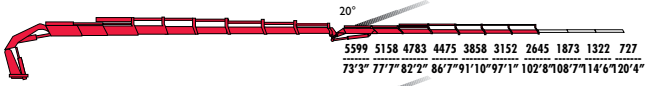
FI 500RA.2.26 L816



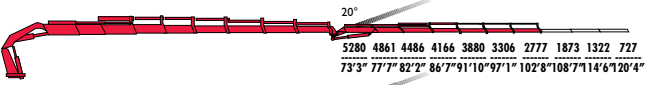
FI 500RA.2.28 L615



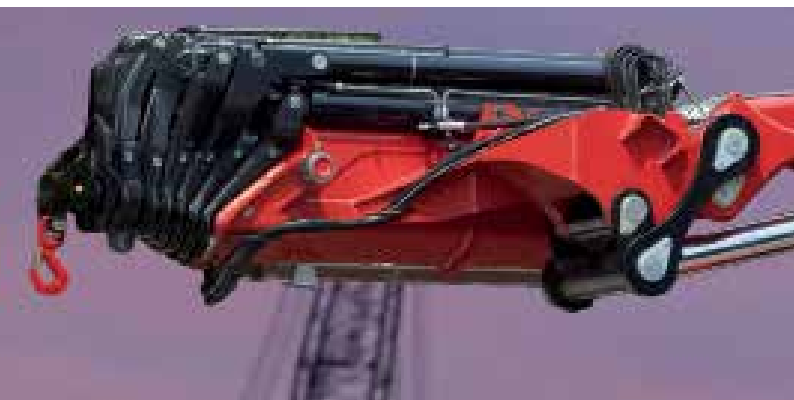
FI 500RA.2.28 L616



FI 500RA.2.28 L816



FI 500RA.2.26 L815	780079	84'7"	60'8"	360	95910	4790	26+26	69+69	30754	8'4"	9'7"	9'5"
FI 500RA.2.26 L816	780079	90'6"	66'3"	360	95910	4790	26+26	69+69	30974	8'4"	9'7"	9'5"
FI 500RA.2.28 L615	765324	97'9"	73'7"	360	95910	4790	26+26	69+69	29762	8'4"	9'7"	9'4"
FI 500RA.2.28 L616	765324	103'8"	79'4"	360	95910	4790	26+26	69+69	32187	8'4"	9'7"	9'4"
FI 500RA.2.28 L816	765324	103'8"	79'4"	360	95910	4790	26+26	69+69	32297	8'4"	9'7"	9'4"



STANDARD

he-dynamic

IMC
Integral Machine Control
control

ADC
Automatic Dynamic Control
control

D900
Digital Multifunction Distributor Bank
control

RCH/RCS
Radio Remote Control
control

FX800
Fast Electronic Control
control

FSC
Fast Stability Control
control

CPM
Crane Position Monitoring
control

OTC
Oil Temperature Control
control

FS
Flow Sharing
performance

XF
Extra Fast
performance

MPES
Multi Power Extension System
performance

XP
Extra Power
performance

FL
Full Lift
performance

PROLINK
Progressive Link
performance

JDP
Jib Dual Power
performance

i
"JDP" activation (Jib dual power) compulsory for versions .28 with hydraulic extensions

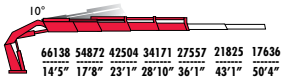
UHSS
Ultra High Strength Steel
strength

FWD
Fewer Welds Design
strength

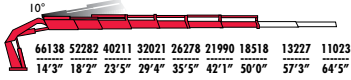


**“L”
SERIE**

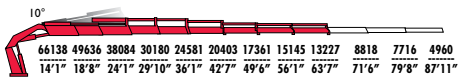
FI 950RA.2.24



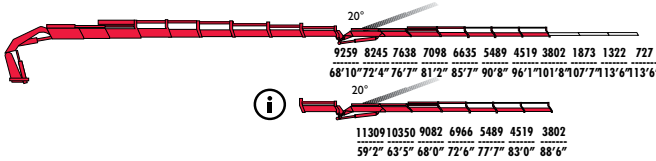
FI 950RA.2.26



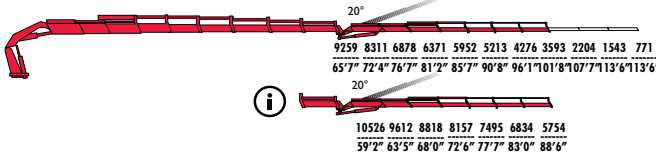
FI 950RA.2.28



FI 950RA.2.28 L816



FI 950RA.2.28 L916



FI 950RA.2.24	995333	36'1"	22'3"	360	95910	4930	26+26	66+66	27998	8'4"	9'5"	8'8"
FI 950RA.2.26	951140	50'0"	36'1"	360	95910	4930	26+26	66+66	29651	8'4"	9'5"	8'8"
FI 950RA.2.28	932695	63'9"	49'2"	360	95910	4930	26+26	66+66	31415	8'4"	9'5"	8'8"
FI 950RA.2.28 L816	932695	102'8"	78'4"	360	95910	4930	26+26	66+66	34975	8'4"	9'7"	9'4"
FI 950RA.2.28 L916	932695	102'8"	78'4"	360	95910	4930	26+26	66+66	35714	8'4"	9'7"	9'5"



STANDARD

he-dynamic

IMC
Integral Machine Control
control

ADC
Automatic Dynamic Control
control

D900
Digital Multifunction Distributor Bank
control

RCH/RCS
Radio Remote Control
control

FX800
Fast Electronic Control
control

FSC
Fast Stability Control
control

CPM
Crane Position Monitoring
control

OTC
Oil Temperature Control
control

FS
Flow Sharing
performance

XF
Extra Fast
performance

MPES
Multi Power Extension System
performance

XP
Extra Power
performance

FL
Full Lift
performance

PROLINK
Progressive Link
performance

JDP
Jib Dual Power
performance

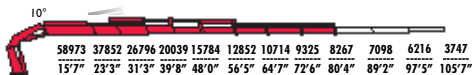
i "JDP" activation (Jib dual power) compulsory for versions .28 with hydraulic extensions

UHSS
Ultra High Strength Steel
strength

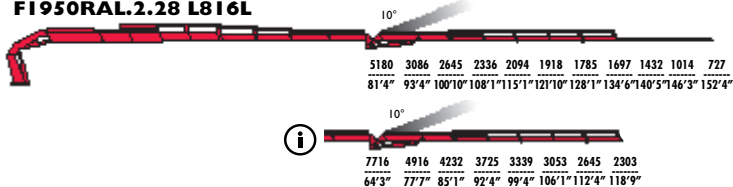
FWD
Fewer Welds Design
strength



FI 950RAL.2.28















FI 950RAL.2.28 L816L



FI 950RAL.2.28	918663	81'6"	64'9"	360	95910	4930	26+26	66+66	34722	13'8"	8'4"	8'11"
FI 950RAL.2.28 L816L	918663	135'5"	105'11"	360	95910	4930	26+26	66+66	39241	13'8"	8'4"	9'6"

SYMBOLS

Lifting Capacity (lbs.ft)	
Standard reach (ft)	
Hydraulic extension (ft)	
Rotation (°)	
Rotation torque (lbs.ft)	
Working pressure (psi)	
Pump capacity (gpm)	
Oil tank capacity (gal)	
Crane weight (lbs)	
Crane length (ft)	
Crane width (ft)	
Crane height (ft)	



CRANES WITHOUT COMPROMISE



FASSI GRU S.p.A.

24021 Albino (Bergamo) ITALY - via Roma,110

Tel. +39 035 776400 - Fax +39 035 755020

<http://www.fassi.com>

e-mail: fassi@fassi.com