

lbs/ft

active

e-active

dynamic

e-dynamic



**CERTIFIED
DYNAMIC
PERFORMANCE**

MEDIUM RANGE: F135A.0 → F235A.2 SERIES

FASSI

www.fassi.com

MODEL	PAGE
-------	------

F135A.0 active - F135A.0 e-active	6
-----------------------------------	---

F135A.0 active "L serie" - F135A.0 e-active "L serie"	9
---	---

F135A.2 dynamic - F135A.2 e-dynamic	10
-------------------------------------	----

F135A.2 dynamic "L serie" - F135A.2 e-dynamic "L serie"	13
---	----

F155A.0 active - F155A.0 e-active	14
-----------------------------------	----

F155A.0 active "L serie" - F155A.0 e-active "L serie"	17
---	----

F155A.2 dynamic - F155A.2 e-dynamic	18
-------------------------------------	----

F155A.2 dynamic "L serie" - F155A.2 e-dynamic "L serie"	21
---	----

F165A.0 e-active	22
------------------	----

F165A.0 e-active "L serie"	25
----------------------------	----

F165A.2 e-dynamic	26
-------------------	----

F165A.2 e-dynamic "L serie"	29
-----------------------------	----

F175A.0 active - F175A.0 e-active	30
-----------------------------------	----

F175A.0 active "L serie" - F175A.0 e-active "L serie"	33
---	----

F175A.2 dynamic - F175A.2 e-dynamic	34
-------------------------------------	----

F175A.2 dynamic "L serie" - F175A.2 e-dynamic "L serie"	37
---	----

F195A.0 active - F195A.0 e-active	38
-----------------------------------	----

F195A.0 active "L serie" - F195A.0 e-active "L serie"	41
---	----

F195A.2 dynamic - F195A.2 e-dynamic	42
-------------------------------------	----

F195A.2 dynamic "L serie" - F195A.2 e-dynamic "L serie"	45
---	----

F215A.0 active - F215A.0 e-active	46
-----------------------------------	----

F215A.0 active "L serie" - F215A.0 e-active "L serie"	49
---	----

MODEL**PAGE**

F215A.2 dynamic - F215A.2 e-dynamic	50
--	-----------

F215A.2 dynamic “L serie” - F215A.2 e-dynamic “L serie”	53
--	-----------

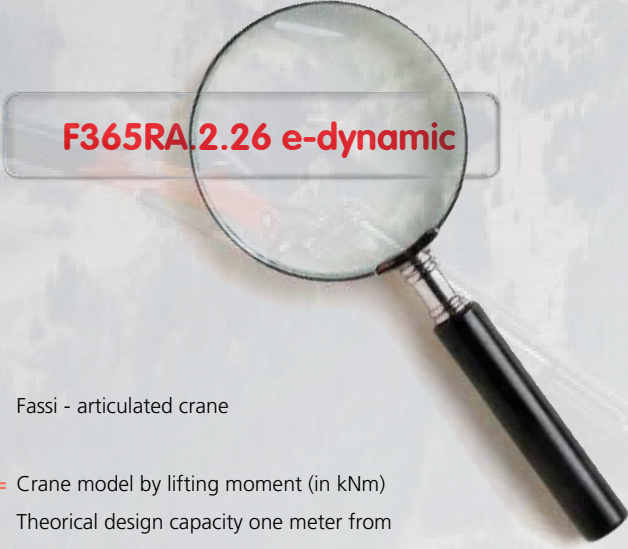
F235A.0 e-active	54
-------------------------	-----------

F235A.0 e-active “L serie”	57
-----------------------------------	-----------

F235A.2 e-dynamic	58
--------------------------	-----------

F235A.2 e-dynamic “L serie”	61
------------------------------------	-----------

CRANE MODELS IDENTIFICATION NAME



F365RA.2.26 e-dynamic

- F =** Fassi - articulated crane
- 365 =** Crane model by lifting moment (in kNm)
Theoretical design capacity one meter from center of column. Example "365" kNm (264005 lbs.ft)
- R =** Continuous rotation (reported only on continuous rotation crane)
- A =** Fassi series. **Single, double or triple letter designation (A,B,C,D,E,G-Z)**. Example: series "A" (1st generation of the same lifting class). The eventual second or third letter identify a special range (ex.:C, F, FM, AS, SE, XS)
- 2 =** Number of linkage: 0-Without linkage; 1-One linkage; 2-Double linkage (on both articulations)
- 26 =** Number of articulations and hydraulic extension booms of the outer boom
Example: "2" articulations "6" extension Boom
- e-dynamic =** Identification of the crane set-up:
active; e-active; dynamic; e-dynamic; he-dynamic

SET UP DESCRIPTION

active

Related to cranes identified by "0", without linkages, dual side manual ground controls, complete with EC safety devices.

e-active

Related to cranes identified by "0", without linkages, one manual ground control, RCH/RCS radio remote control, complete with EC safety devices.

dynamic

Related to cranes identified by "1" and "2", with linkages, dual side manual ground controls, complete with EC safety devices.

e-dynamic

Related to cranes identified by "1" and "2", with linkages, one manual ground control or manual emergency one located on the column side, RCH/RCS radio remote control, eventual XP execution (where available), complete with EC safety devices.

he-dynamic

Related to cranes range from F510RA.2 to F1950RA.2, with linkage, continuous rotation, RCH/RCS radio remote control, outriggers controlled by radio remote control, eventual XP execution (where available), complete with EC safety devices.



STANDARD

FX500
Fassi Electronic Control
control

FSC
Fassi Stability Control
control

MOL
Manual Outriggers Lock
control

CPM
Crane Position Monitoring
control

MPES
Multi Power Extension System
performance

UHSS
Ultra High Strength Steel
strength

FWD
Fewer Welds Design
strength

CQ
Cast Quality
strength

RPS
Rack and Pinion System
strength

STANDARD

D850
Digital Multifunction Distributor Bank
control

RCH/RCS
Radio Remote Control
control

FX500
Fassi Electronic Control
control

FSC
Fassi Stability Control
control

MOL
Manual Outriggers Lock
control

CPM
Crane Position Monitoring
control

FS
Flow Sharing
performance

MPES
Multi Power Extension System
performance

UHSS
Ultra High Strength Steel
strength

FWD
Fewer Welds Design
strength

CQ
Cast Quality
strength

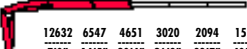
RPS
Rack and Pinion System
strength

active

e-active

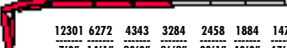


FI35A.0.21



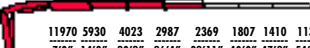
12632	6547	4651	3020	2094	1510
7'0"	14'5"	20'4"	26'8"	33'7"	40'8"

FI35A.0.22



12301	6272	4343	3284	2458	1884	1477
7'0"	14'1"	20'0"	26'2"	33'1"	40'0"	47'6"

FI35A.0.23



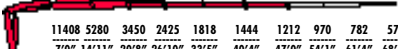
11970	5930	4023	2987	2369	1807	1410	1135
7'0"	14'3"	20'2"	26'4"	32'11"	40'0"	47'2"	54'3"

FI35A.0.24















11640	5599	3725	2700	2083	1708	1322	1058	859
7'0"	14'7"	20'6"	26'8"	33'3"	40'0"	47'2"	54'3"	61'8"

FI35A.0.25



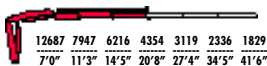
11408	5280	3450	2425	1818	1444	1212	970	782	573
7'0"	14'11"	20'8"	26'10"	33'5"	40'4"	47'0"	54'1"	61'4"	68'4"



												
FI35A.0.21	94391	20'10"	5'10"	390	15862	4140	11	24	3615	7'10"	2'8"	7'2"
FI35A.0.22	88460	27'2"	12'1"	390	15862	4140	11	24	3924	7'10"	2'8"	7'2"
FI35A.0.23	84771	34'1"	18'8"	390	15862	4140	11	24	4210	7'10"	2'8"	7'2"
FI35A.0.24	81805	41'2"	25'7"	390	15862	4140	11	24	4475	7'11"	2'8"	7'2"
FI35A.0.25	80359	48'2"	32'3"	390	15862	4140	11	24	4783	8'0"	3'1"	7'2"



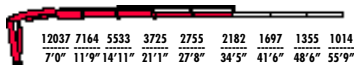
FI35AC.0.22



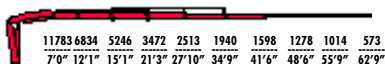
FI35AC.0.23



FI35AC.0.24



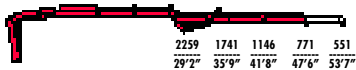
FI35AC.0.25



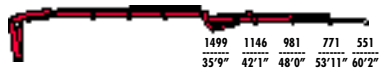
FI35AC.0.22	89979	21'7"	9'4"	390	15862	4140	11	24	3813	7'10"	2'8"	7'2"
FI35AC.0.23	87013	28'4"	15'10"	390	15862	4140	11	24	4144	7'10"	2'8"	7'2"
FI35AC.0.24	84771	35'7"	22'7"	390	15862	4140	11	24	4387	8'1"	2'8"	7'2"
FI35AC.0.25	83324	42'7"	29'6"	390	15862	4140	11	24	4673	8'2"	3'1"	7'2"



FI 35A.0.22 LI02



FI 35A.0.23 LI02



FI 35AC.0.23 LI02



FI 35A.0.22 LI02	88460	48'8"	23'11"	390	15862	4140	11	24	4629	8'1"	3'1"	7'2"
FI 35A.0.23 LI02	84771	55'3"	30'4"	390	15862	4140	11	24	4916	8'1"	3'1"	7'2"
FI 35AC.0.23 LI02	87013	49'8"	27'6"	390	15862	4140	11	24	4850	8'1"	3'1"	7'2"



STANDARD

S800 Multifunction Distributor Bank control	FX500 Fassi Electronic Control control	FSC Fassi Stability Control control	MOL Manual Outriggers Lock control
CPM Crane Position Monitoring control	PROLINK Progressive Link performance	MPES Multi Power Extension System performance	
UHSS Ultra High Strength Steel strength	FWD Fewer Welds Design strength	CQ Cast Quality strength	RPS Rack and Pinion System strength

STANDARD

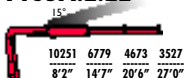
D850 Digital Multifunction Distributor Bank control	RCH/RCS Radio Remote Control control	FX500 Fassi Electronic Control control	FSC Fassi Stability Control control	MOL Manual Outriggers Lock control
CPM Crane Position Monitoring control	FS Flow Sharing performance	MPES Multi Power Extension System performance	PROLINK Progressive Link performance	
UHSS Ultra High Strength Steel strength	FWD Fewer Welds Design strength	CQ Cast Quality strength	RPS Rack and Pinion System strength	

dynamic

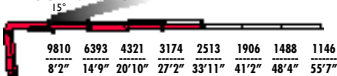
e-dynamic



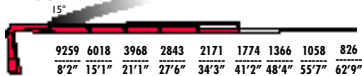
FI 35A.2.22



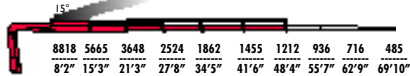
FI 35A.2.23



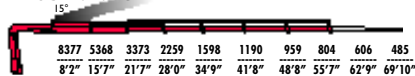
FI 35A.2.24



FI 35A.2.25



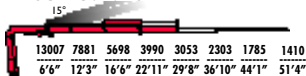
FI 35A.2.26



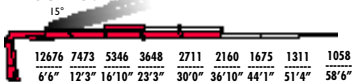
FI 35A.2.22	98803	27'0"	12'5"	416	15862	3990	11	24	4100	8'0"	2'10"	7'9"
FI 35A.2.23	94391	33'11"	19'2"	416	15862	3990	11	24	4453	8'0"	3'1"	7'9"
FI 35A.2.24	90702	41'2"	25'7"	416	15862	3990	11	24	4850	8'0"	3'1"	7'9"
FI 35A.2.25	86290	48'4"	33'1"	416	15862	3990	11	24	5158	8'0"	3'1"	7'9"
FI 35A.2.26	83324	55'7"	40'0"	416	15862	3990	11	24	5423	8'1"	3'1"	7'9"



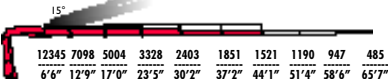
FI 35AC.2.23



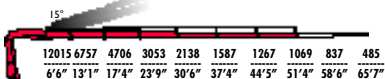
FI 35AC.2.24



FI 35AC.2.25

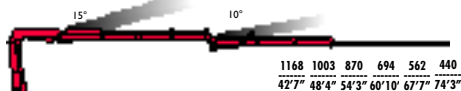


FI 35AC.2.26

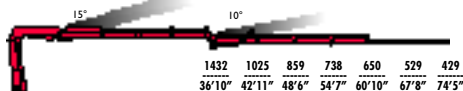


FI 35AC.2.23	97356	29'8"	17'4"	416	15862	3990	11	24	4343	8'0"	3'1"	7'9"
FI 35AC.2.24	94391	36'10"	24'3"	416	15862	3990	11	24	4739	8'0"	3'1"	7'9"
FI 35AC.2.25	90702	44'1"	31'3"	416	15862	3990	11	24	5048	8'0"	3'1"	7'9"
FI 35AC.2.26	88460	51'4"	38'2"	416	15862	3990	11	24	5313	0'9"	3'1"	7'9"

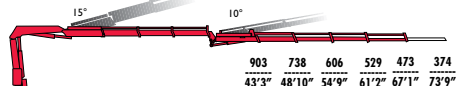
FI35A.2.23 LI52



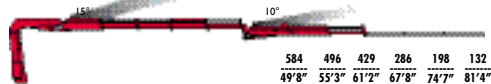
FI35A.2.23 LI53



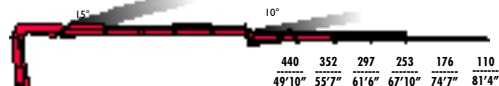
FI35A.2.23 LI54



FI35A.2.24 LI52



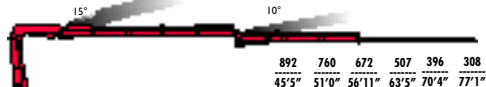
FI35A.2.24 LI53



FI35A.2.25 LI02



FI35AC.2.24 LI52



FI35A.2.23 LI52	94391	54'1"	30'8"	416	15862	3990	11	24	5599	8'0"	3'7"	8'7"
FI35A.2.23 LI53	94391	60'8"	37'0"	416	15862	3990	11	24	5709	8'0"	3'7"	8'7"
FI35A.2.23 LI54	94391	20'13"	42'11"	416	15862	3990	11	24	5886	8'0"	3'7"	8'7"
FI35A.2.24 LI52	90702	182'1"	37'8"	416	15862	3990	11	24	5996	8'0"	3'7"	8'8"
FI35A.2.24 LI53	90702	22'3"	43'11"	416	15862	3990	11	24	6150	8'0"	3'7"	8'8"
FI35A.2.25 LI02	86290	70'2"	45'9"	416	15862	3990	11	24	5952	8'0"	3'7"	8'7"
FI35AC.2.24 LI52	94391	56'11"	35'11"	416	15862	3990	11	24	5886	8'0"	3'7"	8'8"



STANDARD

FX500
Fassi Electronic Control
control

FSC
Fassi Stability Control
control

MOL
Manual Outriggers Lock
control

CPM
Crane Position Monitoring
control

MPES
Multi Power Extension System
performance

UHSS
Ultra High Strength Steel
strength

FWD
Fewer Welds Design
strength

CQ
Cast Quality
strength

RPS
Rack and Pinion System
strength

STANDARD

D850
Digital Multifunction Distributor Bank
control

RCH/RCS
Radio Remote Control
control

FX500
Fassi Electronic Control
control

FSC
Fassi Stability Control
control

MOL
Manual Outriggers Lock
control

CPM
Crane Position Monitoring
control

FS
Flow Sharing
performance

MPES
Multi Power Extension System
performance

UHSS
Ultra High Strength Steel
strength

FWD
Fewer Welds Design
strength

CQ
Cast Quality
strength

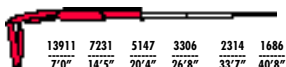
RPS
Rack and Pinion System
strength

active

e-active



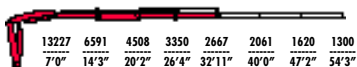
FI55A.0.21



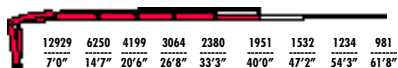
FI55A.0.22



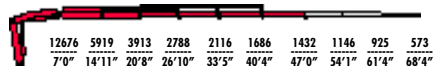
FI55A.0.23



FI55A.0.24



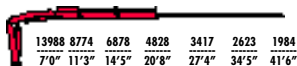
FI55A.0.25



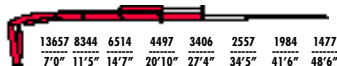
FI55A.0.21	104734	20'10"	5'10"	390	15862	4210	11	24	3703	7'10"	2'8"	7'2"
FI55A.0.22	98079	27'2"	12'1"	390	15862	4210	11	24	4012	7'10"	2'8"	7'2"
FI55A.0.23	94391	34'1"	18'8"	390	15862	4210	11	24	4321	7'10"	2'8"	7'2"
FI55A.0.24	91425	41'2"	25'7"	390	15862	4210	11	24	4585	7'11"	2'8"	7'2"
FI55A.0.25	89183	48'2"	32'3"	390	15862	4210	11	24	4795	8'0"	3'1"	7'2"



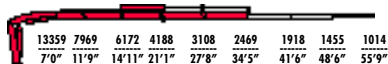
FI 55AC.0.22



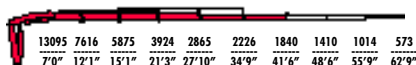
FI 55AC.0.23



FI 55AC.0.24



FI 55AC.0.25



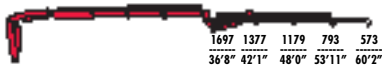
FI 55AC.0.22	99526	21'7"	9'4"	390	15862	4210	11	24	3891	7'10"	2'8"	7'2"
FI 55AC.0.23	95837	28'4"	15'10"	390	15862	4210	11	24	4199	7'10"	2'8"	7'2"
FI 55AC.0.24	94391	35'7"	22'7"	390	15862	4210	11	24	4475	8'1"	2'8"	7'2"
FI 55AC.0.25	92148	42'7"	29'6"	390	15862	4210	11	24	4673	8'2"	3'1"	7'2"



FI 55A.0.22 LI02



FI 55A.0.23 LI02



FI 55A.0.24 LI02



FI 55AC.0.23 LI02



FI 55A.0.22 LI02	98079	48'8"	23'11"	390	15862	4210	11	24	4717	8'1"	3'1"	7'2"
FI 55A.0.23 LI02	94391	55'3"	30'4"	390	15862	4210	11	24	5026	8'1"	3'1"	7'2"
FI 55A.0.24 LI02	91425	62'0"	37'2"	390	15862	4210	11	24	5291	8'1"	3'1"	7'2"
FI 55AC.0.23 LI02	95837	49'8"	27'6"	390	15862	4210	11	24	4905	8'1"	3'1"	7'2"



STANDARD

S800 Multifunction Distributor Bank control	FX500 Fassi Electronic Control control	FSC Fassi Stability Control control	MOL Manual Outriggers Lock control
CPM Crane Position Monitoring control	PROLINK Progressive Link performance	MPES Multi Power Extension System performance	
UHSS Ultra High Strength Steel strength	FWD Fewer Welds Design strength	CQ Cast Quality strength	RPS Rack and Pinion System strength

STANDARD

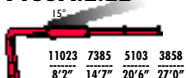
D850 Digital Multifunction Distributor Bank control	RCH/RCS Radio Remote Control control	FX500 Fassi Electronic Control control	FSC Fassi Stability Control control	MOL Manual Outriggers Lock control
CPM Crane Position Monitoring control	FS Flow Sharing performance	MPES Multi Power Extension System performance	PROLINK Progressive Link performance	
UHSS Ultra High Strength Steel strength	FWD Fewer Welds Design strength	CQ Cast Quality strength	RPS Rack and Pinion System strength	

dynamic

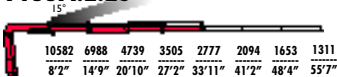
e-dynamic



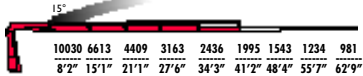
FI 55A.2.22



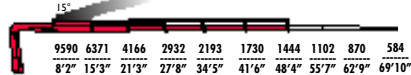
FI 55A.2.23



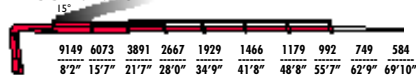
FI 55A.2.24



FI 55A.2.25



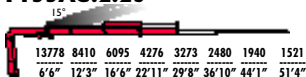
FI 55A.2.26



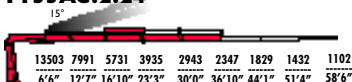
FI 55A.2.22	107627	27'0"	12'5"	416	15862	4350	11	24	4100	8'0"	2'10"	7'9"
FI 55A.2.23	103215	33'11"	19'0"	416	15862	4350	11	24	4453	8'0"	3'1"	7'9"
FI 55A.2.24	99526	41'2"	26'2"	416	15862	4350	11	24	4850	8'0"	3'1"	7'9"
FI 55A.2.25	97356	48'4"	32'9"	416	15862	4350	11	24	5158	8'0"	3'1"	7'9"
FI 55A.2.26	94391	55'7"	40'0"	416	15862	4350	11	24	5423	8'1"	3'1"	7'9"



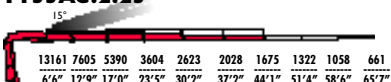
FI 55AC.2.23



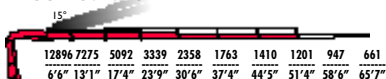
FI 55AC.2.24



FI 55AC.2.25

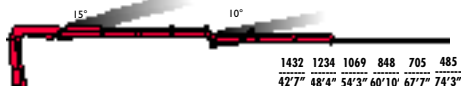


FI 55AC.2.26

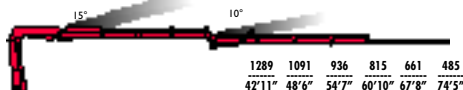


FI 55AC.2.23	103215	29'8"	5,30	416	15862	4350	11	24	4343	7'11"	3'1"	7'9"
FI 55AC.2.24	101045	36'10"	7,40	416	15862	4350	11	24	4739	8'0"	3'1"	7'9"
FI 55AC.2.25	97356	44'1"	9,55	416	15862	4350	11	24	5048	8'0"	3'1"	7'9"
FI 55AC.2.26	95114	51'4"	11,65	416	15862	4350	11	24	5313	8'1"	3'1"	7'9"

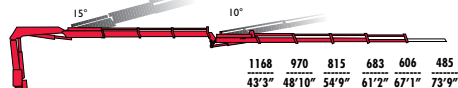
FI 55A.2.23 LI 52



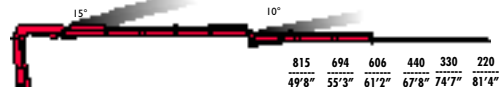
FI 55A.2.23 LI 53



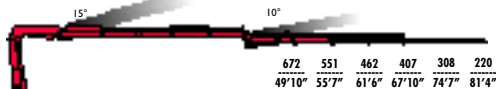
FI 55A.2.23 LI 54



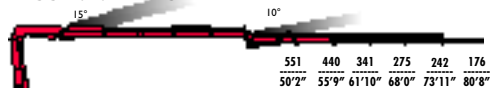
FI 55A.2.24 LI 52



FI 55A.2.24 LI 53



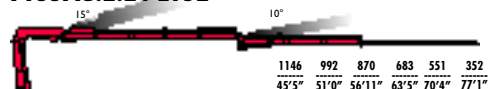
FI 55A.2.24 LI 54



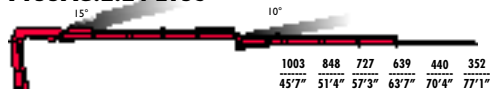
FI 55A.2.25 LI 02



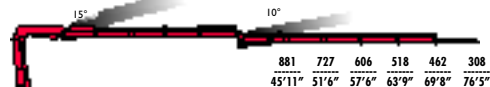
FI 55AC.2.24 LI 52



FI 55AC.2.24 LI 53



FI 55AC.2.24 LI 54



FI 55A.2.23 LI 52	103215	54'11"	30'8"	416	15862	4350	11	24	5599	8'0"	3'7"	8'7"
FI 55A.2.23 LI 53	103215	60'8"	37'0"	416	15862	4350	11	24	5709	8'0"	3'7"	8'7"
FI 55A.2.23 LI 54	103215	60'8"	42'11"	416	15862	4350	11	24	5886	8'0"	3'7"	8'7"
FI 55A.2.24 LI 52	99526	66'11"	37'8"	416	15862	4350	11	24	5996	8'0"	3'7"	8'8"
FI 55A.2.24 LI 53	99526	67'8"	43'11"	416	15862	4350	11	24	6150	8'0"	3'7"	8'8"
FI 55A.2.24 LI 54	99526	73'11"	50'0"	416	15862	4350	11	24	6283	8'0"	3'7"	8'8"
FI 55A.2.25 LI 02	97356	70'2"	45'9"	416	15862	4350	11	24	5952	8'0"	3'7"	8'7"
FI 55AC.2.24 LI 52	101045	56'11"	35'11"	416	15862	4350	11	24	5886	8'0"	3'7"	8'8"
FI 55AC.2.24 LI 53	101045	63'7"	42'1"	416	15862	4350	11	24	6040	8'0"	3'7"	8'8"
FI 55AC.2.24 LI 54	101045	69'8"	48'2"	416	15862	4350	11	24	6172	8'0"	3'7"	8'8"



STANDARD

D850

Digital Multifunction
Distributor Bank

control

RCH/RCS

Radio Remote
Control

control

FX500

Fasi Electronic
Control

control

FSC

Fasi Stability
Control

control

MOL

Manual
Outriggers Lock

control

CPM

Crane Position
Monitoring

control

FS

Flow Sharing

performance

MPES

Multi Power
Extension System

performance

XP

Extra Power

performance

UHSS

Ultra High
Strength Steel

strength

FWD

Fewer Welds
Design

strength

CQ

Cast Quality

strength

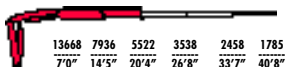
RPS

Rack and Pinion
System

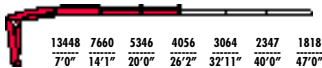
strength



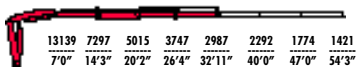
FI 65A.0.21



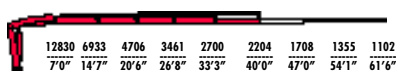
FI 65A.0.22



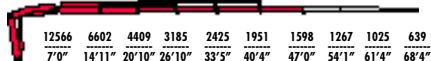
FI 65A.0.23



FI 65A.0.24



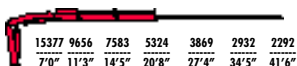
FI 65A.0.25



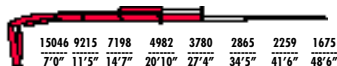
FI 65A.0.21	114281	20'10"	5'10"	390	15862	4500	11	24	3703	7'10"	2'8"	7'2"
FI 65A.0.22	108350	27'2"	12'1"	390	15862	4500	11	24	4012	7'10"	2'8"	7'2"
FI 65A.0.23	103938	34'1"	18'8"	390	15862	4500	11	24	4321	7'10"	2'8"	7'2"
FI 65A.0.24	101045	41'2"	25'7"	390	15862	4500	11	24	4585	7'11"	2'8"	7'2"
FI 65A.0.25	98803	48'2"	32'3"	390	15862	4500	11	24	4795	8'0"	3'1"	7'2"



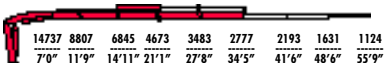
FI 65AC.0.22



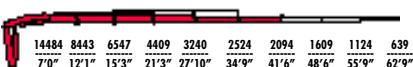
FI 65AC.0.23



FI 65AC.0.24



FI 65AC.0.25



FI 65AC.0.22	109869	21'7"	9'4"	390	15862	4500	11	24	3891	7'10"	2'8"	7'2"
FI 65AC.0.23	106180	28'4"	15'10"	390	15862	4500	11	24	4199	7'10"	2'8"	7'2"
FI 65AC.0.24	103938	35'7"	22'7"	390	15862	4500	11	24	4475	8'1"	2'8"	7'2"
FI 65AC.0.25	102492	42'7"	29'6"	390	15862	4500	11	24	4673	8'2"	3'1"	7'2"



FI 65A.0.22 LI02



FI 65A.0.23 LI02



FI 65A.0.24 LI02



FI 65AC.0.23 LI02



FI 65A.0.22 LI02	108350	48'8"	23'11"	390	15862	4500	11	24	4717	8'1"	3'1"	7'2"
FI 65A.0.23 LI02	103938	55'3"	30'4"	390	15862	4500	11	24	5026	8'1"	3'1"	7'2"
FI 65A.0.24 LI02	101045	62'0"	37'2"	390	15862	4500	11	24	5291	8'1"	3'1"	7'2"
FI 65AC.0.23 LI02	106180	49'8"	27'6"	390	15862	4500	11	24	4905	8'1"	3'1"	7'2"



STANDARD

e-dynamic

D850
Digital Multifunction
Distributor Bank
control

RCH/RCS
Radio Remote
Control
control

FX500
Fassi Electronic
Control
control

FSC
Fassi Stability
Control
control

MOL
Manual
Outriggers Lock
control

CPM
Crane Position
Monitoring
control

FS
Flow Sharing
performance

MPES
Multi Power
Extension System
performance

XP
Extra Power
performance

PROLINK
Progressive
Link
performance

UHSS
Ultra High
Strength Steel
strength

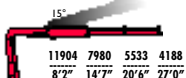
FWD
Fewer Welds
Design
strength

CQ
Cast Quality
strength

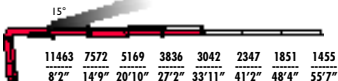
RPS
Rack and Pinion
System
strength



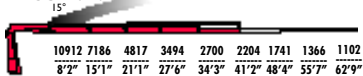
FI 65A.2.22



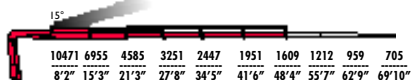
FI 65A.2.23



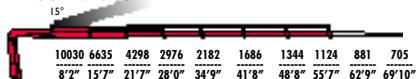
FI 65A.2.24



FI 65A.2.25



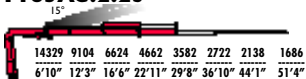
FI 65A.2.26



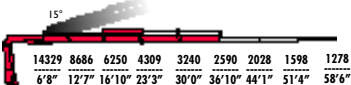
FI 65A.2.22	116524	27'0"	12'5"	416	15862	4640	11-16	24	4100	8'0"	2'10"	7'9"
FI 65A.2.23	112039	33'11"	19'0"	416	15862	4640	11-16	24	4453	8'0"	3'1"	7'9"
FI 65A.2.24	108350	41'2"	26'2"	416	15862	4640	11-16	24	4850	8'0"	3'1"	7'9"
FI 65A.2.25	106180	48'4"	32'9"	416	15862	4640	11-16	24	5158	8'0"	3'1"	7'9"
FI 65A.2.26	103215	55'7"	40'0"	416	15862	4640	11-16	24	5423	8'1"	3'1"	7'9"



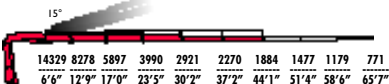
FI 65AC.2.23



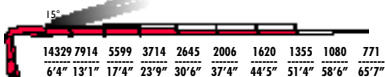
FI 65AC.2.24



FI 65AC.2.25



FI 65AC.2.26

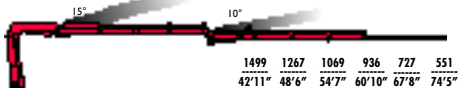


FI 65AC.2.23	112039	29'8"	17'4"	416	15862	4640	11-16	24	4343	7'11"	3'1"	7'9"
FI 65AC.2.24	109869	36'10"	24'3"	416	15862	4640	11-16	24	4739	8'0"	3'1"	7'9"
FI 65AC.2.25	106180	44'1"	31'3"	416	15862	4640	11-16	24	5048	8'0"	3'1"	7'9"
FI 65AC.2.26	103938	51'4"	38'2"	416	15862	4640	11-16	24	5313	8'1"	3'1"	7'9"

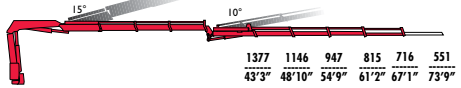
FI 65A.2.23 LI 52



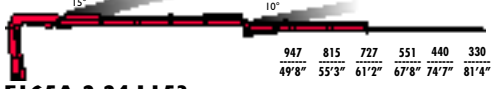
FI 65A.2.23 LI 53



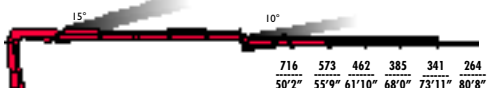
FI 65A.2.23 LI 54



FI 65A.2.24 LI 52



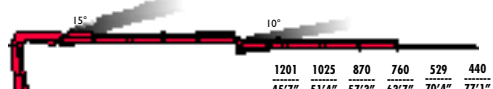
FI 65A.2.24 LI 53



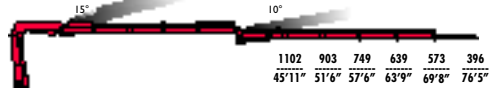
FI 65A.2.25 LI 02



FI 65AC.2.24 LI 52



FI 65AC.2.24 LI 54



FI 65A.2.23 LI 52	112039	54'1"	30'8"	416	15862	4640	11-16	24	5599	8'0"	3'7"	8'7"
FI 65A.2.23 LI 53	112039	60'8"	37'0"	416	15862	4640	11-16	24	5709	8'0"	3'7"	8'7"
FI 65A.2.23 LI 54	112039	66'11"	42'11"	416	15862	4640	11-16	24	5886	8'0"	3'7"	8'7"
FI 65A.2.24 LI 52	108350	61'2"	37'8"	416	15862	4640	11-16	24	5996	8'0"	3'7"	8'8"
FI 65A.2.24 LI 53	108350	67'8"	43'11"	416	15862	4640	11-16	24	6150	8'0"	3'7"	8'8"
FI 65A.2.24 LI 54	108350	73'11"	50'0"	416	15862	4640	11-16	24	6283	8'0"	3'7"	8'8"
FI 65A.2.25 LI 02	106180	70'2"	45'9"	416	15862	4640	11-16	24	5952	8'0"	3'7"	8'7"
FI 65AC.2.24 LI 52	109869	56'11"	35'11"	416	15862	4640	11-16	24	5886	8'0"	3'7"	8'8"
FI 65AC.2.24 LI 53	109869	63'7"	42'1"	416	15862	4640	11-16	24	6040	8'0"	3'7"	8'8"
FI 65AC.2.24 LI 54	109869	69'8"	48'2"	416	15862	4640	11-16	24	6172	8'0"	3'7"	8'8"



STANDARD

<p>S800 Multifunction Distributor Bank</p> <p>control</p>	<p>FX500 Fassi Electronic Control</p> <p>control</p>	<p>FSC Fassi Stability Control</p> <p>control</p>	<p>CPM Crane Position Monitoring</p> <p>control</p>
<p>MPES Multi Power Extension System</p> <p>performance</p>			
<p>UHSS Ultra High Strength Steel</p> <p>strength</p>	<p>FWD Fewer Welds Design</p> <p>strength</p>	<p>CQ Cast Quality</p> <p>strength</p>	<p>RPS Rack and Pinion System</p> <p>strength</p>

STANDARD

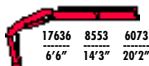
<p>D850 Digital Multifunction Distributor Bank</p> <p>control</p>	<p>RCH/RCS Radio Remote Control</p> <p>control</p>	<p>FX500 Fassi Electronic Control</p> <p>control</p>	<p>FSC Fassi Stability Control</p> <p>control</p>
<p>CPM Crane Position Monitoring</p> <p>control</p>	<p>FS Flow Sharing</p> <p>performance</p>	<p>MPES Multi Power Extension System</p> <p>performance</p>	
<p>UHSS Ultra High Strength Steel</p> <p>strength</p>	<p>FWD Fewer Welds Design</p> <p>strength</p>	<p>CQ Cast Quality</p> <p>strength</p>	<p>RPS Rack and Pinion System</p> <p>strength</p>

active

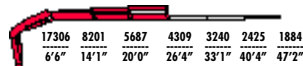
e-active



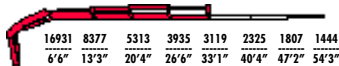
F175A.0.21



F175A.0.22



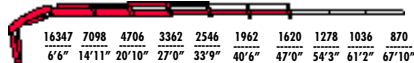
F175A.0.23



F175A.0.24



F175A.0.25



F175A.0.21	122382	20'8"	5'10"	400	20141	4280	11	32	4343	8'1"	2'10"	7'4"
F175A.0.22	115728	27'2"	12'3"	400	20141	4280	11	32	4728	8'0"	2'10"	7'4"
F175A.0.23	111316	34'1"	18'10"	400	20141	4280	11	32	5114	8'0"	2'10"	7'4"
F175A.0.24	109146	41'2"	25'9"	400	20141	4280	11	32	5445	8'1"	2'10"	7'4"
F175A.0.25	106904	48'0"	32'3"	400	20141	4280	11	32	5687	8'1"	3'2"	7'4"



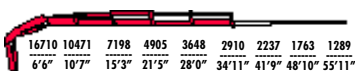
FI75AC.0.22



FI75AC.0.23



FI75AC.0.24



FI75AC.0.25



FI75AC.0.22	117970	21'11"	9'6"	400	20141	4280	11	32	4574	8'0"	2'10"	7'4"
FI75AC.0.23	114281	28'8"	16'0"	400	20141	4280	11	32	4971	8'0"	2'10"	7'4"
FI75AC.0.24	111316	35'11"	22'11"	400	20141	4280	11	32	5291	8'1"	2'10"	7'4"
FI75AC.0.25	109869	42'7"	29'6"	400	20141	4280	11	32	5566	8'1"	3'2"	7'4"



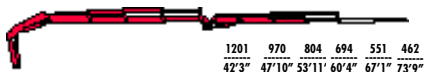
FI75A.0.22 L212



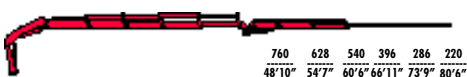
FI75A.0.23 L212



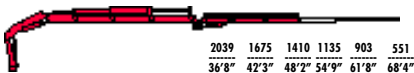
FI75A.0.23 L213



FI75A.0.24 L212



FI75AC.0.23 L212



FI75AC.0.23 L213



FI75A.0.22 L212	115728	47'10"	23'9"	400	20141	4280	11	32	5886	8'2"	3'6"	7'10"
FI75A.0.23 L212	111316	54'5"	30'4"	400	20141	4280	11	32	6294	8'2"	3'6"	7'10"
FI75A.0.23 L213	111316	61'0"	36'8"	400	20141	4280	11	32	6481	8'2"	3'6"	7'10"
FI75A.0.24 L212	109146	61'4"	37'2"	400	20141	4280	11	32	6547	8'2"	3'6"	7'10"
FI75AC.0.23 L212	114281	49'2"	27'2"	400	20141	4280	11	32	6139	8'2"	3'6"	7'10"
FI75AC.0.23 L213	114281	55'9"	33'5"	400	20141	4280	11	32	6327	8'2"	3'6"	7'10"



STANDARD

S800 Multifunction Distributor Bank control	FX500 Fassi Electronic Control control	FSC Fassi Stability Control control	CPM Crane Position Monitoring control
MPES Multi Power Extension System performance	PROLINK Progressive Link performance		
FWD Fewer Welds Design strength	UHSS Ultra High Strength Steel strength	CQ Cast Quality strength	RPS Rack and Pinion System strength

STANDARD

D850 Digital Multifunction Distributor Bank control	RCH/RCS Radio Remote Control control	FX500 Fassi Electronic Control control	FSC Fassi Stability Control control	CPM Crane Position Monitoring control
FS Flow Sharing performance	XF Extra Fast performance	MPES Multi Power Extension System performance	PROLINK Progressive Link performance	
FWD Fewer Welds Design strength	UHSS Ultra High Strength Steel strength	CQ Cast Quality strength	RPS Rack and Pinion System strength	

dynamic

e-dynamic



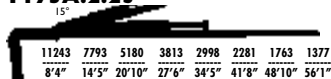
FI75A.2.22

15°



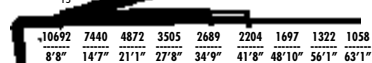
FI75A.2.23

15°



FI75A.2.24

15°



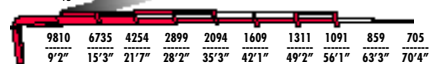
FI75A.2.25

15°



FI75A.2.26

15°



FI75A.2.22	115728	27'4"	13'1"	400	20141	4500	12-17	32	5224	8'3"	3'0"	7'10"
FI75A.2.23	112039	34'5"	20'0"	400	20141	4500	12-17	32	5577	8'3"	3'2"	7'10"
FI75A.2.24	108350	41'8"	27'0"	400	20141	4500	12-17	32	5952	8'3"	3'2"	7'10"
FI75A.2.25	106904	48'10"	33'11"	400	20141	4500	12-17	32	6327	8'3"	3'2"	7'10"
FI75A.2.26	102492	56'1"	40'10"	400	20141	4500	12-17	32	6547	8'3"	3'2"	7'10"



FI75AC.2.23

15°

14329	9590	6944	4817	3659	2755	2160	1719
6'8"	11'11"	16'2"	22'11"	29'10"	37'0"	44'3"	51'6"

FI75AC.2.24

15°

14329	9171	6602	4497	3339	2678	1984	1543	1278
6'6"	12'1"	16'4"	23'1"	30'2"	37'0"	44'3"	51'6"	58'8"

FI75AC.2.25

15°

14329	8906	6338	4210	3053	2380	1973	1543	1234	992
6'4"	12'5"	16'8"	23'5"	30'4"	37'2"	44'3"	51'6"	58'8"	65'9"

FI75AC.2.26

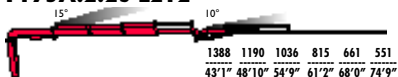
15°

14329	8377	5919	3869	2733	2083	1686	1432	1080	881
6'2"	12'9"	17'0"	23'7"	30'8"	37'6"	44'7"	51'6"	58'8"	65'9"

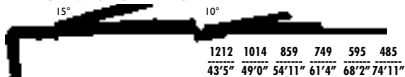


FI75AC.2.23	115005	29'10"	17'10"	400	20141	4500	12-17	32	5445	8'3"	3'2"	7'10"
FI75AC.2.24	111316	37'0"	24'11"	400	20141	4500	12-17	32	5820	8'3"	3'2"	7'10"
FI75AC.2.25	111316	44'3"	31'9"	400	20141	4500	12-17	32	6172	8'3"	3'2"	7'10"
FI75AC.2.26	106904	51'6"	38'8"	400	20141	4500	12-17	32	6437	8'3"	3'2"	7'10"

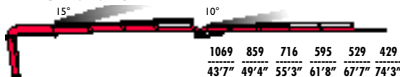
FI75A.2.23 L212



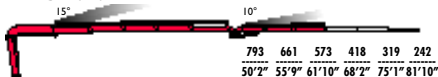
FI75A.2.23 L213



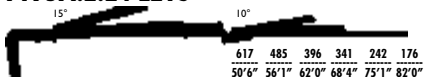
FI75A.2.23 L214



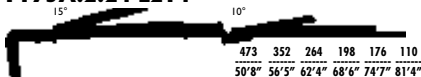
FI75A.2.24 L212



FI75A.2.24 L213



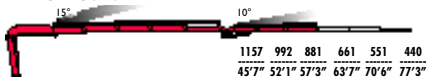
FI75A.2.24 L214



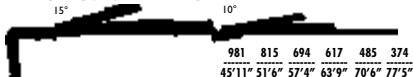
FI75A.2.25 LI02



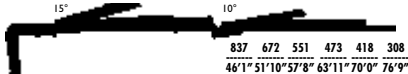
FI75AC.2.24 L212



FI75AC.2.24 L213



FI75AC.2.24 L214



FI75A.2.23 L212	112039	54'7"	31'7"	400	20141	4500	12-17	32	6834	8'3"	3'8"	8'8"
FI75A.2.23 L213	112039	61'2"	37'10"	400	20141	4500	12-17	32	7032	8'3"	3'8"	8'8"
FI75A.2.23 L214	112039	67'5"	43'9"	400	20141	4500	12-17	32	7142	8'3"	3'8"	8'8"
FI75A.2.24 L212	108350	61'8"	38'6"	400	20141	4500	12-17	32	7198	8'3"	3'8"	8'9"
FI75A.2.24 L213	108350	68'2"	44'11"	400	20141	4500	12-17	32	7374	8'3"	3'8"	8'9"
FI75A.2.24 L214	108350	74'5"	50'10"	400	20141	4500	12-17	32	7495	8'3"	3'8"	8'9"
FI75A.2.25 LI02	106904	69'10"	45'9"	400	20141	4500	12-17	32	7120	8'3"	3'8"	8'7"
FI75AC.2.24 L212	111316	57'11"	36'5"	400	20141	4500	12-17	32	7065	8'3"	3'8"	8'9"
FI75AC.2.24 L213	111316	63'7"	42'9"	400	20141	4500	12-17	32	7242	8'3"	3'8"	8'9"
FI75AC.2.24 L214	111316	69'10"	48'10"	400	20141	4500	12-17	32	7363	8'3"	3'8"	8'9"



STANDARD

S800
Multifunction
Distributor Bank
control

FX500
Fassi Electronic
Control
control

FSC
Fassi Stability
Control
control

CPM
Crane Position
Monitoring
control

MPES
Multi Power
Extension System
performance

UHSS
Ultra High
Strength Steel
strength

FWD
Fewer Welds
Design
strength

CQ
Cast Quality
strength

RPS
Rack and Pinion
System
strength

STANDARD

D850
Digital Multifunction
Distributor Bank
control

RCH/RCS
Radio Remote
Control
control

FX500
Fassi Electronic
Control
control

FSC
Fassi Stability
Control
control

CPM
Crane Position
Monitoring
control

FS
Flow Sharing
performance

MPES
Multi Power
Extension System
performance

UHSS
Ultra High
Strength Steel
strength

FWD
Fewer Welds
Design
strength

CQ
Cast Quality
strength

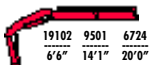
RPS
Rack and Pinion
System
strength

active

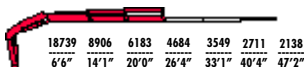
e-active



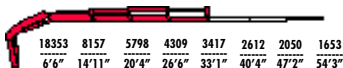
FI95A.0.21



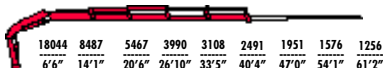
FI95A.0.22



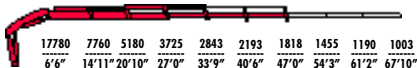
FI95A.0.23



FI95A.0.24



FI95A.0.25



FI95A.0.21	134895	20'8"	5'10"	400	22723	4060	12	32	4420	8'0"	2'10"	7'4"
FI95A.0.22	125348	27'2"	12'3"	400	22723	4060	12	32	4806	8'0"	2'10"	7'4"
FI95A.0.23	121659	34'1"	18'10"	400	22723	4060	12	32	5191	8'0"	2'10"	7'4"
FI95A.0.24	119417	41'2"	25'9"	400	22723	4060	12	32	5522	8'1"	2'10"	7'4"
FI95A.0.25	116524	48'0"	32'3"	400	22723	4060	12	32	5787	8'1"	3'2"	7'4"



FI95AC.0.22



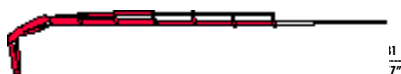
FI95AC.0.23



FI95AC.0.24

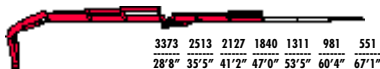


FI95AC.0.25

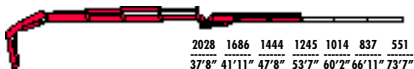


Model	Weight	Length	Height	Capacity	Reach	Max. Lift	Max. Lift	Max. Lift	Max. Lift	Max. Lift	Max. Lift	Max. Lift
FI95AC.0.22	127590	21'11"	9'6"	400	22723	4060	12	32	4651	8'0"	2'10"	7'4"
FI95AC.0.23	123901	28'8"	16'0"	400	22723	4060	12	32	5048	8'0"	2'10"	7'4"
FI95AC.0.24	120936	35'11"	22'11"	400	22723	4060	12	32	5368	8'1"	2'10"	7'4"
FI95AC.0.25	119417	42'7"	29'6"	400	22723	4060	12	32	5643	8'1"	3'2"	7'4"

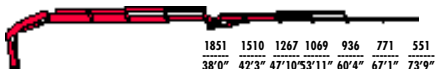
FI95A.0.22 L212



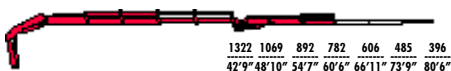
FI95A.0.23 L212



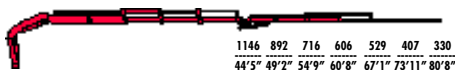
FI95A.0.23 L213



FI95A.0.24 L212



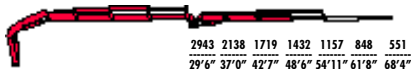
FI95A.0.24 L213



FI95AC.0.23 L212



FI95AC.0.23 L213



FI95A.0.22 L212	125348	47'10"	23'9"	400	22723	4060	12	32	5963	8'2"	3'6"	7'10"
FI95A.0.23 L212	121659	54'5"	30'4"	400	22723	4060	12	32	6371	8'2"	3'6"	7'10"
FI95A.0.23 L213	121659	61'0"	36'3"	400	22723	4060	12	32	6558	8'2"	3'6"	7'10"
FI95A.0.24 L212	119417	61'4"	37'2"	400	22723	4060	12	32	6701	8'2"	3'6"	7'10"
FI95A.0.24 L213	119417	67'10"	43'7"	400	22723	4060	12	32	6889	8'2"	3'6"	7'10"
FI95AC.0.23 L212	123901	49'2"	27'6"	400	22723	4060	12	32	6216	8'2"	3'6"	7'10"
FI95AC.0.23 L213	123901	55'9"	33'11"	400	22723	4060	12	32	6404	8'2"	3'6"	7'10"



STANDARD

S800 Multifunction Distributor Bank control	FX500 Fassi Electronic Control control	FSC Fassi Stability Control control	CPM Crane Position Monitoring control
MPES Multi Power Extension System performance	PROLINK Progressive Link performance		
FWD Fewer Welds Design strength	UHSS Ultra High Strength Steel strength	CQ Cast Quality strength	RPS Rack and Pinion System strength

STANDARD

D850 Digital Multifunction Distributor Bank control	RCH/RCS Radio Remote Control control	FX500 Fassi Electronic Control control	FSC Fassi Stability Control control	CPM Crane Position Monitoring control
FS Flow Sharing performance	XF Extra Fast performance	MPES Multi Power Extension System performance	PROLINK Progressive Link performance	
FWD Fewer Welds Design strength	UHSS Ultra High Strength Steel strength	CQ Cast Quality strength	RPS Rack and Pinion System strength	

dynamic

e-dynamic



FI 95A.2.22

15°

12896	8994	6117	4574
8'0"	14'1"	20'6"	27'2"

FI 95A.2.23

15°

12345	8586	5754	4232	3339	2535	2006	1587
8'2"	14'5"	20'10"	27'6"	34'5"	41'8"	48'10"	56'1"

FI 95A.2.24

15°

11904	8190	5401	3913	3020	2480	1918	1521	1234
8'4"	14'7"	21'1"	27'8"	34'9"	41'8"	48'10"	56'1"	63'1"

FI 95A.2.25

15°

11243	7771	5026	3538	2645	2116	1785	1366	1102	881
8'8"	14'11"	21'3"	28'0"	34'11"	41'11"	48'10"	56'1"	63'3"	70'4"

FI 95A.2.26

15°

11023	7462	4772	3306	2425	1884	1543	1311	1014	837
8'8"	15'3"	21'7"	28'2"	35'3"	42'1"	49'2"	56'1"	63'3"	70'4"



FI 95A.2.22	126794	27'4"	13'1"	400	22723	4280	12-17	32	5445	8'3"	3'0"	7'10"
FI 95A.2.23	123901	34'5"	20'0"	400	22723	4280	12-17	32	5798	8'3"	3'2"	7'10"
FI 95A.2.24	119417	41'8"	27'0"	400	22723	4280	12-17	32	6172	8'3"	3'2"	7'10"
FI 95A.2.25	115728	48'10"	33'11"	400	22723	4280	12-17	32	6547	8'3"	3'2"	7'10"
FI 95A.2.26	113558	56'1"	40'10"	400	22723	4280	12-17	32	6768	8'3"	3'2"	7'10"



FI 95AC.2.23

15°

14329	10438	7605	5291	4023	2976	2204	1763
7'4"	11'11"	16'2"	22'11"	29'10"	37'0"	44'3"	51'6"

FI 95AC.2.24

15°

14329	10008	7231	4949	3703	2965	2204	1719	1322
7'2"	12'1"	16'4"	23'1"	30'2"	37'0"	44'3"	51'6"	58'8"

FI 95AC.2.25

15°

14329	9744	6977	4684	3417	2678	2226	1697	1344	1058
7'0"	12'5"	16'8"	23'5"	30'4"	37'2"	44'3"	51'6"	58'8"	65'9"

FI 95AC.2.26

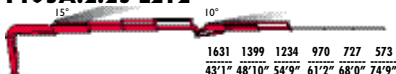
15°

14329	9193	6536	4321	3086	2369	1929	1642	1212	1058
6'10"	12'9"	17'0"	23'7"	30'8"	37'6"	44'7"	51'6"	58'8"	65'9"

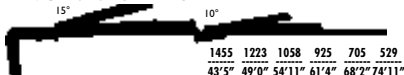


FI 95AC.2.23	125348	29'10"	17'10"	400	22723	4280	12-17	32	5665	8'3"	3'2"	7'10"
FI 95AC.2.24	121659	37'0"	24'11"	400	22723	4280	12-17	32	6040	8'3"	3'2"	7'10"
FI 95AC.2.25	120936	44'3"	31'9"	400	22723	4280	12-17	32	6393	8'3"	3'2"	7'10"
FI 95AC.2.26	117970	51'6"	38'8"	400	22723	4280	12-17	32	6657	8'3"	3'2"	7'10"

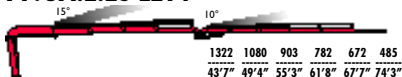
FI95A.2.23 L212



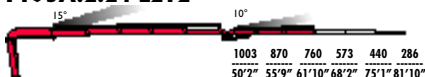
FI95A.2.23 L213



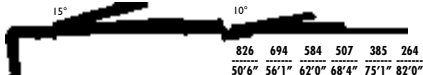
FI95A.2.23 L214



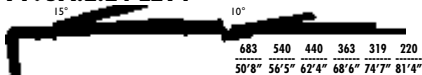
FI95A.2.24 L212



FI95A.2.24 L213



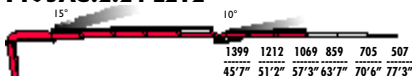
FI95A.2.24 L214



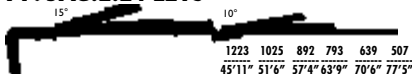
FI95A.2.25 LI02



FI95AC.2.24 L212



FI95AC.2.24 L213



FI95AC.2.24 L214



FI95A.2.23 L212	123684	54'7"	31'7"	400	22723	4280	12-17	32	7054	8'3"	3'8"	8'8"
FI95A.2.23 L213	123684	61'2"	37'10"	400	22723	4280	12-17	32	7253	8'3"	3'8"	8'8"
FI95A.2.23 L214	123684	67'5"	43'9"	400	22723	4280	12-17	32	7363	8'3"	3'8"	8'8"
FI95A.2.24 L212	119345	61'8"	38'6"	400	22723	4280	12-17	32	7418	8'3"	3'8"	8'9"
FI95A.2.24 L213	119345	68'2"	44'11"	400	22723	4280	12-17	32	7594	8'3"	3'8"	8'9"
FI95A.2.24 L214	119345	74'5"	50'10"	400	22723	4280	12-17	32	7716	8'3"	3'8"	8'9"
FI95A.2.25 LI02	115728	69'10"	45'9"	400	22723	4280	12-17	32	7341	8'3"	3'8"	8'7"
FI95AC.2.24 L212	121514	57'11"	36'5"	400	22723	4280	12-17	32	7286	8'3"	3'8"	8'9"
FI95AC.2.24 L213	121514	63'7"	42'9"	400	22723	4280	12-17	32	7462	8'3"	3'8"	8'9"
FI95AC.2.24 L214	121514	69'10"	48'10"	400	22723	4280	12-17	32	7583	8'3"	3'8"	8'9"



STANDARD

S800
Multifunction
Distributor Bank

control

FX500
Fassi Electronic
Control

control

FSC
Fassi Stability
Control

control

CPM
Crane Position
Monitoring

control

MPES
Multi Power
Extension System

performance

UHSS
Ultra High
Strength Steel

strength

FWD
Fewer Welds
Design

strength

CQ
Cast Quality

strength

RPS
Rack and Pinion
System

strength

STANDARD

D850
Digital Multifunction
Distributor Bank

control

RCH/RCS
Radio Remote
Control

control

FX500
Fassi Electronic
Control

control

FSC
Fassi Stability
Control

control

CPM
Crane Position
Monitoring

control

FS
Flow Sharing

performance

MPES
Multi Power
Extension System

performance

UHSS
Ultra High
Strength Steel

strength

FWD
Fewer Welds
Design

strength

CQ
Cast Quality

strength

RPS
Rack and Pinion
System

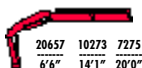
strength

active

e-active



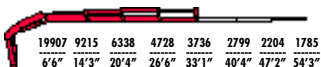
F215A.0.21



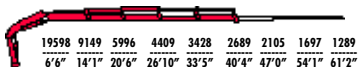
F215A.0.22



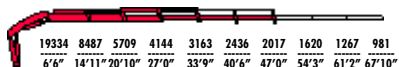
F215A.0.23



F215A.0.24



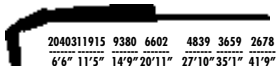
F215A.0.25



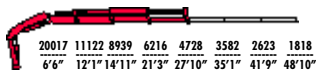
F215A.0.21	145239	20'8"	5'10"	400	24715	4350	12	32	4420	8'0"	2'10"	7'4"
F215A.0.22	136414	27'2"	12'3"	400	24715	4350	12	32	4806	8'0"	2'10"	7'4"
F215A.0.23	131207	34'1"	18'10"	400	24715	4350	12	32	5191	8'0"	2'10"	7'4"
F215A.0.24	129037	41'2"	25'9"	400	24715	4350	12	32	5522	8'1"	2'10"	7'4"
F215A.0.25	126794	48'0"	32'3"	400	24715	4350	12	32	5787	8'1"	3'2"	7'4"



F215AC.0.22



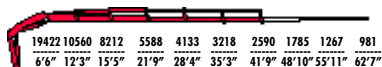
F215AC.0.23



F215AC.0.24

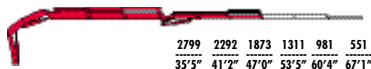


F215AC.0.25

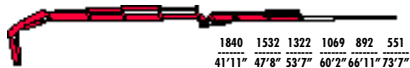


F215AC.0.22	138584	21'11"	9'6"	400	24715	4350	12	32	4651	8'0"	2'10"	7'4"
F215AC.0.23	134895	28'8"	16'0"	400	24715	4350	12	32	5048	8'0"	2'10"	7'4"
F215AC.0.24	131207	35'11"	22'11"	400	24715	4350	12	32	5368	8'0"	2'10"	7'4"
F215AC.0.25	129760	42'7"	29'4"	400	24715	4350	12	32	5643	8'1"	3'2"	7'4"

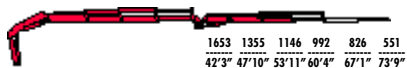
F215A.0.22 L212



F215A.0.23 L212



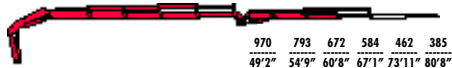
F215A.0.23 L213



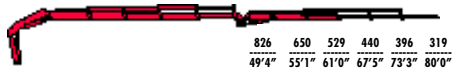
F215A.0.24 L212



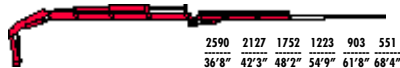
F215A.0.24 L213



F215A.0.24 L214



F215AC.0.23 L212



F215AC.0.23 L213



F215A.0.22 L212	136414	47'10"	23'9"	400	24715	4350	12	32	5963	8'2"	3'6"	7'10"
F215A.0.23 L212	131207	54'7"	30'4"	400	24715	4350	12	32	6371	8'2"	3'6"	7'10"
F215A.0.23 L213	131207	61'2"	36'8"	400	24715	4350	12	32	6558	8'2"	3'6"	7'10"
F215A.0.24 L212	129037	61'4"	37'2"	400	24715	4350	12	32	6701	8'2"	3'6"	7'10"
F215A.0.24 L213	129037	67'10"	43'7"	400	24715	4350	12	32	6889	8'2"	3'6"	7'10"
F215A.0.24 L214	129037	74'1"	49'6"	400	24715	4350	12	32	7032	8'2"	3'6"	7'10"
F215AC.0.23 L212	134895	49'2"	27'6"	400	24715	4350	12	32	6216	8'2"	3'6"	7'10"
F215AC.0.23 L213	134895	55'9"	33'11"	400	24715	4350	12	32	6404	8'2"	3'6"	7'10"



STANDARD

S800 Multifunction Distributor Bank control	FX500 Fassi Electronic Control control	FSC Fassi Stability Control control	CPM Crane Position Monitoring control
MPES Multi Power Extension System performance	PROLINK Progressive Link performance		
FWD Fewer Welds Design strength	UHSS Ultra High Strength Steel strength	CQ Cast Quality strength	RPS Rack and Pinion System strength

STANDARD

D850 Digital Multifunction Distributor Bank control	RCH/RCS Radio Remote Control control	FX500 Fassi Electronic Control control	FSC Fassi Stability Control control	CPM Crane Position Monitoring control
FS Flow Sharing performance	XF Extra Fast performance	MPES Multi Power Extension System performance	PROLINK Progressive Link performance	
FWD Fewer Welds Design strength	UHSS Ultra High Strength Steel strength	CQ Cast Quality strength	RPS Rack and Pinion System strength	

dynamic

e-dynamic



F215A.2.22

15°

13668	9656	6613	4960
8'10"	14'1"	20'6"	27'2"

F215A.2.23

15°

13007	9237	6216	4585	3626	2744	2138	1653
8'6"	14'5"	20'10"	27'6"	34'5"	41'8"	48'10"	56'1"

F215A.2.24

15°

12345	8818	5864	4265	3306	2711	2061	1620	1322
8'10"	14'7"	21'1"	27'8"	34'9"	41'8"	48'10"	56'1"	63'1"

F215A.2.25

15°

11904	8498	5555	3935	2976	2391	1973	1543	1212	992
9'2"	14'11"	21'3"	28'0"	34'11"	41'11"	48'10"	56'1"	63'3"	70'4"

F215A.2.26

15°

11904	7914	5257	3637	2689	2094	1708	1477	1102	881
8'8"	15'3"	20'11"	27'6"	34'5"	41'4"	48'6"	56'1"	63'3"	70'4"

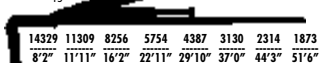


F215A.2.22	136704	27'4"	13'1"	400	24715	4500	12	32	5445	8'3"	3'0"	7'10"
F215A.2.23	133087	34'5"	20'0"	400	24715	4500	12	32	5798	8'3"	3'2"	7'10"
F215A.2.24	128747	41'8"	27'0"	400	24715	4500	12	32	6172	8'3"	3'2"	7'10"
F215A.2.25	126578	48'10"	33'11"	400	24715	4500	12	32	6547	8'3"	3'2"	7'10"
F215A.2.26	120791	56'1"	40'10"	400	24715	4500	12	32	6768	8'3"	3'2"	7'10"



F215AC.2.23

15°



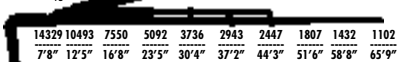
F215AC.2.24

15°

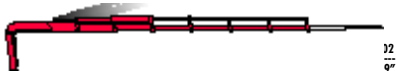


F215AC.2.25

15°

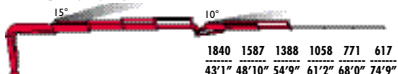


F215AC.2.26

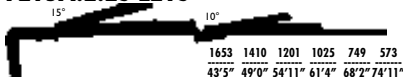


F215AC.2.23	135257	29'10"	17'10"	400	24715	4500	12	32	5665	8'3"	3'2"	7'10"
F215AC.2.24	132364	37'0"	24'11"	400	24715	4500	12	32	6040	8'3"	3'2"	7'10"
F215AC.2.25	130194	44'3"	31'9"	400	24715	4500	12	32	6393	8'3"	3'2"	7'10"
F215AC.2.26	125131	51'6"	38'8"	400	24715	4500	12	32	6657	8'3"	3'2"	7'10"

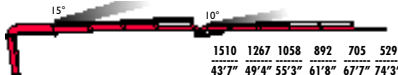
F215A.2.23 L212



F215A.2.23 L213



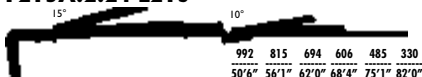
F215A.2.23 L214



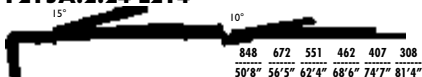
F215A.2.24 L212



F215A.2.24 L213



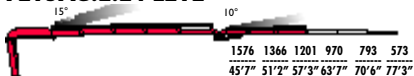
F215A.2.24 L214



F215A.2.25 L102



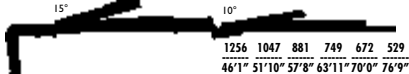
F215AC.2.24 L212



F215AC.2.24 L213



F215AC.2.24 L214



F215A.2.23 L212	133087	54'7"	31'7"	400	24715	4500	12	32	7054	8'3"	3'8"	8'8"
F215A.2.23 L213	133087	61'2"	37'10"	400	24715	4500	12	32	7253	8'3"	3'8"	8'8"
F215A.2.23 L214	133087	67'5"	43'9"	400	24715	4500	12	32	7363	8'3"	3'8"	8'8"
F215A.2.24 L212	128747	61'8"	38'6"	400	24715	4500	12	32	7418	8'3"	3'8"	8'9"
F215A.2.24 L213	128747	68'2"	44'11"	400	24715	4500	12	32	7594	8'3"	3'8"	8'9"
F215A.2.24 L214	128747	74'5"	50'10"	400	24715	4500	12	32	7716	8'3"	3'8"	8'9"
F215A.2.25 L102	126578	69'10"	45'9"	400	24715	4500	12	32	7341	8'3"	3'8"	8'7"
F215AC.2.24 L212	132364	57'1"	36'5"	400	24715	4500	12	32	7286	8'3"	3'8"	8'9"
F215AC.2.24 L213	132364	63'9"	42'9"	400	24715	4500	12	32	7462	8'3"	3'8"	8'9"
F215AC.2.24 L214	132364	69'10"	48'10"	400	24715	4500	12	32	7583	8'3"	3'8"	8'9"



STANDARD

D850

Digital Multifunction
Distributor Bank

control

RCH/RCS

Radio Remote
Control

control

FX500

Fawl Electronic
Control

control

FSC

Fawl Stability
Control

control

CPM

Crane Position
Monitoring

control

FS

Flow Sharing

performance

MPES

Multi Power
Extension System

performance

XP

Extra Power

performance

UHSS

Ultra High
Strength Steel

strength

FWD

Fewer Welds
Design

strength

CQ

Cast Quality

strength

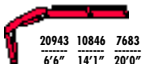
RPS

Rack and Pinion
System

strength

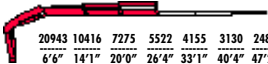


F235A.0.21



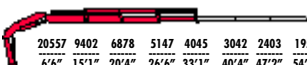
20943	10846	7683
6'6"	14'1"	20'0"

F235A.0.22



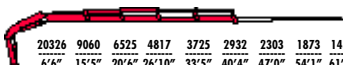
20943	10416	7275	5522	4155	3130	2480
6'6"	14'1"	20'0"	26'4"	33'1"	40'4"	47'2"

F235A.0.23



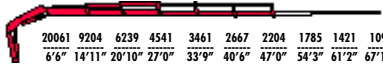
20557	9402	6878	5147	4045	3042	2403	1951
6'6"	15'1"	20'4"	26'6"	33'1"	40'4"	47'2"	54'3"

F235A.0.24



20326	9060	6525	4817	3725	2932	2303	1873	1432
6'6"	15'5"	20'6"	26'10"	33'5"	40'4"	47'0"	54'1"	61'2"

F235A.0.25



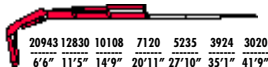
20061	9204	6239	4541	3461	2667	2204	1785	1421	1091
6'6"	14'11"	20'10"	27'0"	33'9"	40'6"	47'0"	54'3"	61'2"	67'10"



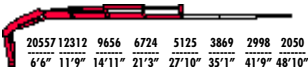
F235A.0.21	153340	20'8"	5'10"	400	26560	4640	12-17	32	4420	8'0"	2'10"	7'4"
F235A.0.22	146758	27'2"	12'3"	400	26560	4640	12-17	32	4806	8'0"	2'10"	7'4"
F235A.0.23	142273	34'1"	18'10"	400	26560	4640	12-17	32	5191	8'0"	2'10"	7'4"
F235A.0.24	139380	41'2"	25'9"	400	26560	4640	12-17	32	5522	8'1"	2'10"	7'4"
F235A.0.25	137138	48'0"	32'3"	400	26560	4640	12-17	32	5787	8'1"	3'2"	7'4"



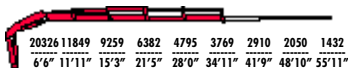
F235AC.0.22



F235AC.0.23



F235AC.0.24



F235AC.0.25



F235AC.0.22	149651	21'11"	9'6"	400	26560	4640	12-17	32	4651	8'0"	2'10"	7'4"
F235AC.0.23	145239	28'8"	16'0"	400	26560	4640	12-17	32	5048	8'0"	2'10"	7'4"
F235AC.0.24	141550	35'11"	22'11"	400	26560	4640	12-17	32	5368	8'0"	2'10"	7'4"
F235AC.0.25	140827	42'7"	29'4"	400	26560	4640	12-17	32	5643	8'1"	3'2"	7'4"

F235A.0.23 L2 I 2



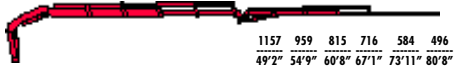
F235A.0.23 L2 I 3



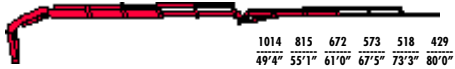
F235A.0.24 L2 I 2



F235A.0.24 L2 I 3



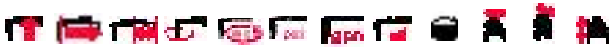
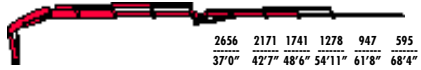
F235A.0.24 L2 I 4



F235AC.0.23 L2 I 2



F235AC.0.23 L2 I 3



F235A.0.23 L2 I 2	142273	54'7"	30'4"	400	26560	4640	12-17	32	6371	8'2"	3'6"	7'10"
F235A.0.23 L2 I 3	142273	61'2"	36'8"	400	26560	4640	12-17	32	6558	8'2"	3'6"	7'10"
F235A.0.24 L2 I 2	143864	61'4"	37'2"	400	26560	4640	12-17	32	6701	8'2"	3'6"	7'10"
F235A.0.24 L2 I 3	143864	67'10"	43'7"	400	26560	4640	12-17	32	6889	8'2"	3'6"	7'10"
F235A.0.24 L2 I 4	143864	74'1"	49'6"	400	26928	4640	12-17	32	7032	8'2"	3'6"	7'10"
F235AC.0.23 L2 I 2	145239	49'2"	27'6"	400	26560	4640	12-17	32	6216	8'2"	3'6"	7'10"
F235AC.0.23 L2 I 3	145239	55'9"	33'11"	400	26560	4640	12-17	32	6404	8'2"	3'6"	7'10"



STANDARD

D850
Digital Multifunction
Distributor Bank
control

RCH/RCS
Radio Remote
Control
control

FX500
Fasi Electronic
Control
control

FSC
Fasi Stability
Control
control

CPM
Crane Position
Monitoring
control

FS
Flow Sharing
performance

XF
Extra Fast
performance

MPES
Multi Power
Extension System
performance

XP
Extra Power
performance

PROLINK
Progressive
Link
performance

UHSS
Ultra High
Strength Steel
strength

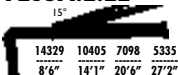
FWD
Fewer Welds
Design
strength

CQ
Cast Quality
strength

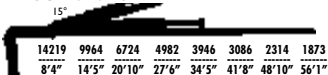
RPS
Rack and Pinion
System
strength



F235A.2.22



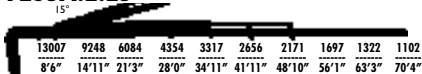
F235A.2.23



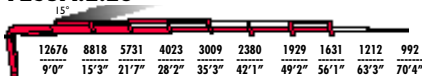
F235A.2.24



F235A.2.25



F235A.2.26



F235A.2.22	146758	27'4"	13'1"	400	24715	4790	12-17	32	5445	8'3"	3'0"	7'10"
F235A.2.23	143792	34'5"	20'0"	400	24715	4790	12-17	32	5798	8'3"	3'2"	7'10"
F235A.2.24	139380	41'8"	27'0"	400	24715	4790	12-17	32	6172	8'3"	3'2"	7'10"
F235A.2.25	137861	48'10"	33'11"	400	24715	4790	12-16	32	6547	8'3"	3'2"	7'10"
F235A.2.26	134172	56'1"	40'10"	400	24715	4790	12-16	32	6768	8'3"	3'2"	7'10"



F235AC.2.23

15°

14329	12169	8906	6227	4750	3527	2645	2094
9'0"	11'11"	16'2"	22'11"	29'10"	37'0"	44'3"	51'6"

F235AC.2.24

15°

14329	11695	8509	5875	4420	3560	2645	1984	1543
8'10"	12'1"	16'4"	23'1"	30'2"	37'0"	44'3"	51'6"	58'8"

F235AC.2.25

15°

14329	11353	8212	5577	4111	3251	2678	1984	1587	1212
8'6"	12'5"	16'8"	23'5"	30'4"	37'2"	44'3"	51'6"	58'8"	65'9"

F235AC.2.26

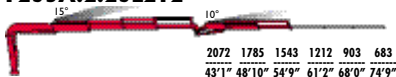
15°

14329	10813	7782	5224	3802	2954	2425	2028	1455	1212
8'4"	12'9"	17'0"	23'7"	30'8"	37'6"	44'7"	51'6"	58'8"	65'9"

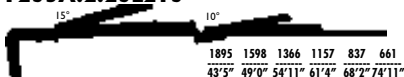


F235AC.2.23	145962	29'10"	17'10"	400	24715	4790	12-17	32	5665	8'3"	3'2"	7'10"
F235AC.2.24	142273	37'0"	24'11"	400	24715	4790	12-17	32	6040	8'3"	3'2"	7'10"
F235AC.2.25	141550	44'3"	31'9"	400	24715	4790	12-16	32	6393	8'3"	3'2"	7'10"
F235AC.2.26	138584	51'6"	38'8"	400	24715	4790	12-16	32	6657	8'3"	3'2"	7'10"

F235A.2.23L2 I 2



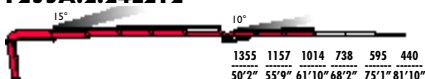
F235A.2.23L2 I 3



F235A.2.23L2 I 4



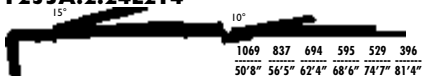
F235A.2.24L2 I 2



F235A.2.24L2 I 3



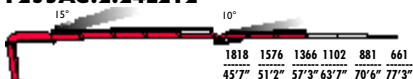
F235A.2.24L2 I 4



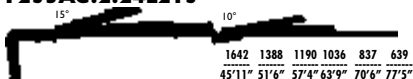
F235A.2.25L I 02



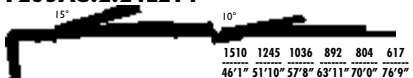
F235AC.2.24L2 I 2



F235AC.2.24L2 I 3



F235AC.2.24L2 I 4



F235A.2.23L2 I 2	143792	54'7"	31'7"	400	24715	4790	12-17	32	7054	8'3"	3'8"	8'8"
F235A.2.23L2 I 3	143792	61'2"	37'10"	400	24715	4790	12-17	32	7253	8'3"	3'8"	8'8"
F235A.2.23L2 I 4	143792	67'5"	43'9"	400	24715	4790	12-17	32	7363	8'3"	3'8"	8'8"
F235A.2.24L2 I 2	139380	61'8"	38'6"	400	24715	4790	12-17	32	7418	8'3"	3'8"	8'9"
F235A.2.24L2 I 3	139380	68'2"	44'11"	400	24715	4790	12-17	32	7594	8'3"	3'8"	8'9"
F235A.2.24L2 I 4	139380	74'5"	50'10"	400	24715	4790	12-17	32	7716	8'3"	3'8"	8'9"
F235A.2.25L I 02	137861	69'10"	45'9"	400	24715	4790	12-17	32	7341	8'3"	3'8"	8'7"
F235AC.2.24L2 I 2	142273	57'1"	36'5"	400	24715	4790	12-17	32	7286	8'3"	3'8"	8'9"
F235AC.2.24L2 I 3	142273	63'9"	42'9"	400	24715	4790	12-17	32	7462	8'3"	3'8"	8'9"
F235AC.2.24L2 I 4	142273	70'0"	48'10"	400	24715	4790	12-17	32	7583	8'3"	3'8"	8'9"

SYMBOLS



Lifting Capacity (lbs.ft)



Standard reach (ft)



Hydraulic extension (ft)



Rotation (°)



Rotation torque (lbs.ft)



Working pressure (psi)



Pump capacity (gpm)



Oil tank capacity (gal)



Crane weight (lbs)



Crane length (ft)



Crane width (ft)



Crane height (ft)



CRANES WITHOUT COMPROMISE



FASSI GRU S.p.A.

24021 Albino (Bergamo) ITALY - via Roma,110

Tel. +39 035 776400 - Fax +39 035 755020

<http://www.fassi.com>

e-mail: fassi@fassi.com