

lbs/ft

active

e-active



**CERTIFIED
DYNAMIC
PERFORMANCE**

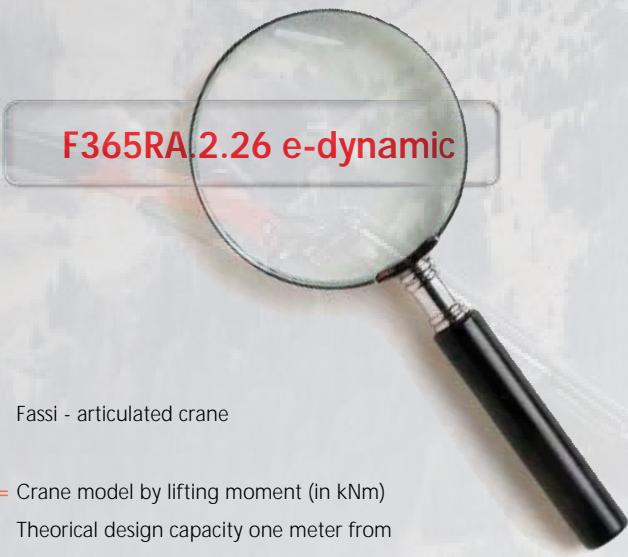
SMALL RANGE: MICRO → F125A.2 SERIES

FASSI

www.fassi.com

MODEL	PAGE
MICRO SERIES	6
F22A.0 active	10
F28A.0 active	12
F30CY.0 active	14
F38A.0 active	16
F40A.0 active	18
F50A.0 active - F50A.0 e-active	20
F55A.0 e-active	22
F65A.0 active - F65A e-active	24
F70A.0 e-active	26
F80A.0 active - F80A.0 e-active	28
F90A.0 e-active	30
F95A.0 active - F95A.0 e-active	32
F105A.0 e-active	34
F110B.0 active - F110B.0 e-active	36
F110B.1 dynamic - F110B.1 e-dynamic	38
F110B.2 dynamic - F110B.2 e-dynamic	40
F120B.0 e-active	42
F120B.1 e-dynamic	44
F120B.2 e-dynamic	46
F125A.1 e-dynamic	58
F125A.2 e-dynamic	50

CRANE MODELS IDENTIFICATION NAME



F365RA.2.26 e-dynamic

F = Fassi - articulated crane

365 = Crane model by lifting moment (in kNm)
Theoretical design capacity one meter from center of column. Example " 365" kNm (264005 lbs.ft)

R = Continuous rotation (reported only on continuous rotation crane)

A = Fassi series. **Single, double or triple letter designation (A,B,C,D,E,G-Z)**. Example: series " A" (1st generation of the same lifting class). The eventual second or third letter identify a special range (ex.:C, F, FM, AS, SE, XS)

2 = Number of linkage: 0-Without linkage; 1-One linkage; 2-Double linkage (on both articulations)

26 = Number of articulations and hydraulic extension booms of the outer boom

Example: " 2" articulations " 6" extension Boom

e-dynamic = Identification of the crane set-up:

active; e-active; dynamic; e-dynamic; he-dynamic

SET UP DESCRIPTION

active

Related to cranes identified by "0", without linkages, dual side manual ground controls, complete with EC safety devices.

e-active

Related to cranes identified by "0", without linkages, one manual ground control, RCH/RCS radio remote control, complete with EC safety devices.

dynamic

Related to cranes identified by "1" and "2", with linkages, dual side manual ground controls, complete with EC safety devices.

e-dynamic

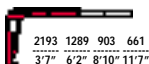
Related to cranes identified by "1" and "2", with linkages, one manual ground control or manual emergency one located on the column side, RCH/RCS radio remote control, eventual XP execution (where available), complete with EC safety devices.

he-dynamic

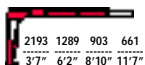
Related to cranes range from F510RA.2 to F1950RA.2, with linkage, continuous rotation, RCH/RCS radio remote control, outriggers controlled by radio remote control, eventual XP execution (where available), complete with EC safety devices.



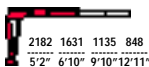
M10A.11



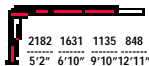
M10A.12



M15A.11



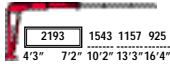
M15A.12



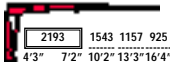
M10A.11	8101	6'2"	2'7"	325	1402	2610	2	4	319	2'0"	1'1"	3'11"
M10A.12	8101	8'10"	5'2"	325	1402	2610	2	4	341	2'0"	1'1"	3'11"
M15A.11	11066	6'10"	2'11"	325	2140	2610	2	4	374	2'3"	1'1"	4'5"
M15A.12	11066	9'10"	5'10"	325	2140	2610	2	4	396	2'3"	1'1"	4'5"



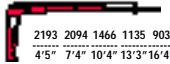
M20A.11



M20A.12



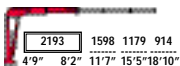
M20A.13



M20A.11	15479	7'2"	2'11"	325	2508	2610	2	4	429	2'4"	11"	5'0"
M20A.12	15479	10'2"	5'10"	325	2508	2610	2	4	462	2'4"	11"	5'0"
M20A.13	15479	13'3"	8'10"	325	2508	2610	2	4	529	2'7"	11"	5'0"



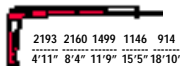
M25A.11



M25A.12



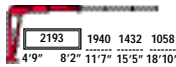
M25A.13



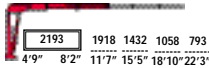
M25A.11	18444	8'2"	3'3"	325	2508	2250	2	4	473	2'8"	1'1"	5'3"
M25A.12	18444	11'5"	6'10"	325	2508	2250	2	4	507	2'8"	1'1"	5'3"
M25A.13	18444	15'5"	10'5"	325	2508	2250	2	4	573	2'11"	1'1"	5'3"



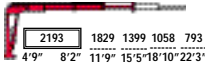
M30A.11



M30A.12



M30A.13



M30A.11	22133	8'2"	3'3"	325	2508	2610	2	4	473	2'8"	1'1"	5'3"
M30A.12	22133	11'5"	6'10"	325	2508	2610	2	4	507	2'8"	1'1"	5'3"
M30A.13	21410	15'5"	10'5"	325	2508	2610	2	4	573	2'11"	1'1"	5'3"



STANDARD

MOL

Manual
Outriggers Lock

control

CPM

Crane Position
Monitoring

control

MPES

Multi Power
Extension System

performance

UHSS

Ultra High
Strength Steel

strength

FWD

Fewer Welds
Design

strength

CQ

Cast Quality

strength

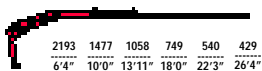
RPS

Rack and Pinion
System

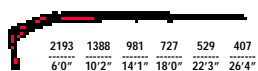
strength



F22A.0.21



F22A.0.22



F22A.0.21	14755	14'5"	3'11"	370	2951	2980	3	9	793	5'11"	1'8"	4'11"
F22A.0.22	14032	18'6"	7'10"	370	2951	2980	3	9	881	5'11"	1'8"	4'11"



STANDARD

MOL

Manual
Outriggers Lock

control

CPM

Crane Position
Monitoring

control

MPES

Multi Power
Extension System

performance

UHSS

Ultra High
Strength Steel

strength

FWD

Fewer Welds
Design

strength

CQ

Cast Quality

strength

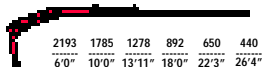
RPS

Rack and Pinion
System

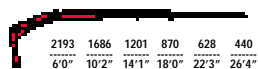
strength



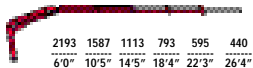
F28A.0.21



F28A.0.22



F28A.0.23



F28A.0.21	17721	14'5"	3'11"	370	2951	3480	3	9	859	5'11"	18"	4'11"
F28A.0.22	16925	18'6"	7'10"	370	2951	3480	3	9	947	5'11"	18"	4'11"
F28A.0.23	16925	22'7"	11'9"	370	2951	3480	3	9	1025	5'11"	18"	4'11"



STANDARD

MOL

Manual
Outriggers Lock

control

CPM

Crane Position
Monitoring

control

MPES

Multi Power
Extension System

performance

UHSS

Ultra High
Strength Steel

strength

FWD

Fewer Welds
Design

strength

CQ

Cast Quality

strength

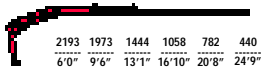
RPS

Rack and Pinion
System

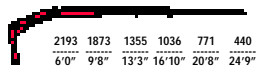
strength



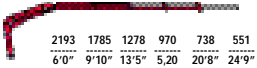
F30CY.0.21



F30CY.0.22



F30CY.0.23



F30CY.0.21	19167	13'7"	3'7"	370	2951	3630	3	9	859	5'4"	1'8"	4'11"
F30CY.0.22	18444	17'4"	7'2"	370	2951	3630	3	9	936	5'4"	1'8"	4'11"
F30CY.0.23	17721	21'1"	10'9"	370	2951	3630	3	9	992	5'4"	1'8"	4'11"



STANDARD

MOL

Manual
Outriggers Lock

control

CPM

Crane Position
Monitoring

control

MPES

Multi Power
Extension System

performance

UHSS

Ultra High
Strength Steel

strength

FWD

Fewer Welds
Design

strength

CQ

Cast Quality

strength

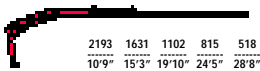
RPS

Rack and Pinion
System

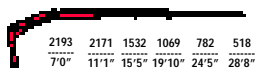
strength



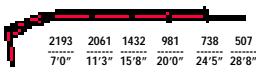
F38A.0.21



F38A.0.22



F38A.0.23



F38A.0.21	25099	15'7"	4'5"	370	3910	3410	4	9	1080	6'3"	1'9"	5'2"
F38A.0.22	24303	20'2"	8'10"	370	3910	3410	4	9	1179	6'3"	1'10"	5'2"
F38A.0.23	23580	24'9"	13'1"	370	3910	3410	4	9	1267	6'3"	1'10"	5'2"



STANDARD

MOL

Manual
Outriggers Lock

control

CPM

Crane Position
Monitoring

control

MPES

Multi Power
Extension System

performance

UHSS

Ultra High
Strength Steel

strength

FWD

Fewer Welds
Design

strength

CQ

Cast Quality

strength

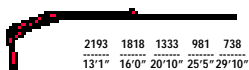
RPS

Rack and Pinion
System

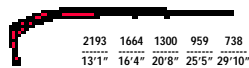
strength



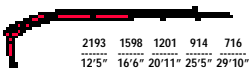
F40A.O.21



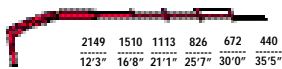
F40A.O.22



F40A.O.23



F40A.O.24



F40A.O.21	29511	16'6"	4'5"	370	5164	3270	4	9	1355	6'10"	1'9"	5'9"
F40A.O.22	27992	21'1"	8'10"	370	5164	3270	4	9	1466	6'10"	1'9"	5'9"
F40A.O.23	27268	25'9"	13'3"	370	5164	3270	4	9	1576	6'10"	1'10"	5'9"
F40A.O.24	26545	30'4"	17'6"	370	5164	3270	4	9	1653	6'10"	1'11"	5'9"



STANDARD

FX500 Fassi Electronic Control control	FSC Fassi Stability Control control	MOL Manual Outriggers Lock control	CPM Crane Position Monitoring control
MPES Multi Power Extension System performance			
UHSS Ultra High Strength Steel strength	FWD Fewer Welds Design strength	CQ Cast Quality strength	RPS Rack and Pinion System strength

STANDARD

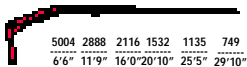
D850 Digital Multifunction Distributor Bank control	RCH/RCS Radio Remote Control control	FX500 Fassi Electronic Control control	FSC Fassi Stability Control control
MOL Manual Outriggers Lock control	CPM Crane Position Monitoring control	FS Flow Sharing performance	MPES Multi Power Extension System performance
UHSS Ultra High Strength Steel strength	FWD Fewer Welds Design strength	CQ Cast Quality strength	RPS Rack and Pinion System strength

active

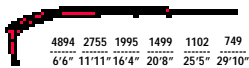
e-active



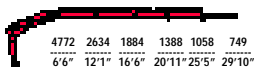
F50A.0.21



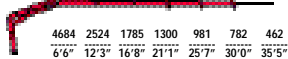
F50A.0.22



F50A.0.23



F50A.0.24



Model	Code	Height	Reach	Capacity	Weight	Length	Width	Depth	Accessories	Height	Reach	Capacity
F50A.0.21	33923	16'6"	4'5"	370	5607	3700	4	9	1355	6'10"	1'9"	5'9"
F50A.0.22	33199	21'1"	8'10"	370	5607	3700	4	9	1466	6'10"	1'9"	5'9"
F50A.0.23	31681	25'9"	13'3"	370	5607	3700	4	9	1576	6'10"	1'10"	5'9"
F50A.0.24	30957	30'4"	17'6"	370	5607	3700	4	9	1653	6'10"	1'11"	5'9"



STANDARD

D850

Digital Multifunction
Distributor Bank

control

RCH/RCS

Radio Remote
Control

control

FX500

Fasi Electronic
Control

control

FSC

Fasi Stability
Control

control

MOL

Manual
Outriggers Lock

control

CPM

Crane Position
Monitoring

control

FS

Flow Sharing

performance

MPES

Multi Power
Extension System

performance

XP

Extra Power

performance

UHSS

Ultra High
Strength Steel

strength

FWD

Fewer Welds
Design

strength

CQ

Cast Quality

strength

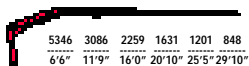
RPS

Rack and Pinion
System

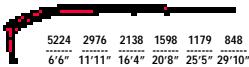
strength



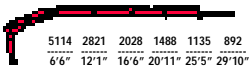
F55A.0.21



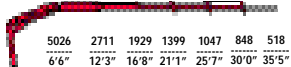
F55A.0.22



F55A.0.23



F55A.0.24



F55A.0.21	36093	16'6"	4'5"	370	5607	3990	4	9	1355	6'10"	1'9"	5'9"
F55A.0.22	35369	21'1"	8'10"	370	5607	3990	4	9	1466	6'10"	1'9"	5'9"
F55A.0.23	33923	25'9"	13'3"	370	5607	3990	4	9	1576	6'10"	1'10"	5'9"
F55A.0.24	33199	30'4"	17'6"	370	5607	3990	4	9	1653	6'10"	1'11"	5'9"



STANDARD

FX500
Fassi Electronic Control
control

FSC
Fassi Stability Control
control

MOL
Manual Outriggers Lock
control

CPM
Crane Position Monitoring
control

MPES
Multi Power Extension System
performance

UHSS
Ultra High Strength Steel
strength

FWD
Fewer Welds Design
strength

CQ
Cast Quality
strength

RPS
Rack and Pinion System
strength

STANDARD

D850
Digital Multifunction Distributor Bank
control

RCH/RCS
Radio Remote Control
control

FX500
Fassi Electronic Control
control

FSC
Fassi Stability Control
control

MOL
Manual Outriggers Lock
control

CPM
Crane Position Monitoring
control

FS
Flow Sharing
performance

MPES
Multi Power Extension System
performance

UHSS
Ultra High Strength Steel
strength

FWD
Fewer Welds Design
strength

CQ
Cast Quality
strength

RPS
Rack and Pinion System
strength

active

e-active



F65A.0.21



F65A.0.22



F65A.0.23



F65A.0.24



F65AC.0.22



F65AC.0.23



F65A.0.22 L061



F65A.0.21	47955	18'0"	5'2"	370	7083	3770	5	24	1763	7'4"	2'0"	6'3"
F65A.0.22	47159	23'7"	10'7"	370	7083	3770	5	24	1873	7'4"	2'0"	6'3"
F65A.0.23	44989	29'2"	15'10"	370	7083	3770	5	24	2028	7'4"	2'0"	6'3"
F65A.0.24	41300	33'9"	20'4"	370	7083	3770	5	24	2160	7'4"	2'0"	6'3"
F65AC.0.22	43470	21'3"	9'6"	370	7083	3770	5	24	1962	7'4"	2'0"	6'3"
F65AC.0.23	42747	26'10"	14'9"	370	7083	3770	5	24	2028	7'4"	2'0"	6'3"
F65A.0.22 L061	47159	33'7"	14'7"	370	7083	3770	5	24	2138	7'4"	2'6"	6'3"



STANDARD

D850
Digital Multifunction
Distributor Bank
control

RCH/RCS
Radio Remote
Control
control

FX500
Fasi Electronic
Control
control

FSC
Fasi Stability
Control
control

MOL
Manual
Outriggers Lock
control

CPM
Crane Position
Monitoring
control

FS
Flow Sharing
performance

MPES
Multi Power
Extension System
performance

XP
Extra Power
performance

UHSS
Ultra High
Strength Steel
strength

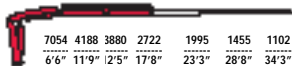
FWD
Fewer Welds
Design
strength

CQ
Cast Quality
strength

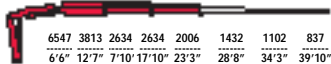
RPS
Rack and Pinion
System
strength



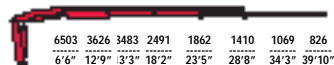
F70A.0.21



F70A.0.22



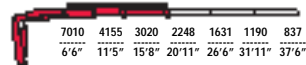
F70A.0.23



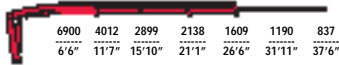
F70A.0.24



F70AC.0.22



F70AC.0.23



F70A.0.22 L061



F70A.0.21	49401	18'0"	5'2"	370	7083	4060	5	24	1763	7'4"	2'3"	6'3"
F70A.0.22	47955	23'7"	10'7"	370	7083	4060	5	24	1873	7'4"	2'3"	6'3"
F70A.0.23	46436	29'2"	15'10"	370	7083	4060	5	24	2028	7'4"	2'3"	6'3"
F70A.0.24	44989	33'9"	20'4"	370	7083	4060	5	24	2160	7'4"	2'3"	6'3"
F70AC.0.22	47955	21'3"	9'6"	370	7083	4060	5	24	1962	7'4"	2'3"	6'3"
F70AC.0.23	46436	26'10"	14'9"	370	7083	4060	5	24	2028	7'4"	2'3"	6'3"
F70A.0.22 L061	47955	33'7"	14'7"	370	7083	4060	5	24	2138	7'4"	2'6"	6'3"



STANDARD

FX500 Fassi Electronic Control control	FSC Fassi Stability Control control	MOL Manual Outriggers Lock control	CPM Crane Position Monitoring control
MPES Multi Power Extension System performance			
UHSS Ultra High Strength Steel strength	FWD Fewer Welds Design strength	CQ Cast Quality strength	RPS Rack and Pinion System strength

STANDARD

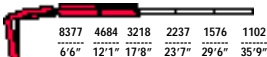
D850 Digital Multifunction Distributor Bank control	RCH/RCS Radio Remote Control control	FX500 Fassi Electronic Control control	FSC Fassi Stability Control control
MOL Manual Outriggers Lock control	CPM Crane Position Monitoring control	FS Flow Sharing performance	MPES Multi Power Extension System performance
UHSS Ultra High Strength Steel strength	FWD Fewer Welds Design strength	CQ Cast Quality strength	RPS Rack and Pinion System strength

active

e-active



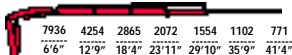
F80A.0.21



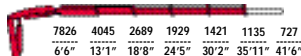
F80A.0.22



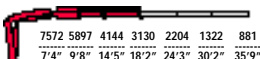
F80A.0.23



F80A.0.24



F80AC.0.22



F80AC.0.23



F80AC.0.24



F80A.23 L061



F80A.0.21	56779	18'4"	5'6"	370	8632	4350	5	24	2116	7'3"	2'3"	6'5"
F80A.0.22	56056	24'3"	11'3"	370	8632	4350	5	24	2259	7'3"	2'4"	6'5"
F80A.0.23	54537	30'6"	17'0"	370	8632	4350	5	24	2447	7'3"	2'4"	6'5"
F80A.0.24	53090	36'5"	22'9"	370	8632	4350	5	24	2579	7'3"	2'4"	6'5"
F80AC.0.22	59745	18'8"	8'6"	370	8632	3920	5	24	2182	7'3"	2'4"	6'5"
F80AC.0.23	56056	24'9"	14'5"	370	8632	3920	5	24	2369	7'3"	2'4"	6'5"
F80AC.0.24	48678	30'10"	20'0"	370	8632	3920	5	24	2513	7'3"	2'4"	6'5"
F80A.0.23 L061	54537	40'4"	20'11"	370	8632	4350	5	24	2744	7'3"	2'10"	6'5"



STANDARD

D850

Digital Multifunction
Distributor Bank

control

RCH/RCS

Radio Remote
Control

control

FX500

Fassi Electronic
Control

control

FSC

Fassi Stability
Control

control

MOL

Manual
Outriggers Lock

control

CPM

Crane Position
Monitoring

control

FS

Flow Sharing

performance

MPES

Multi Power
Extension System

performance

XP

Extra Power

performance

UHSS

Ultra High
Strength Steel

strength

FWD

Fewer Welds
Design

strength

CQ

Cast Quality

strength

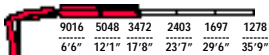
RPS

Rack and Pinion
System

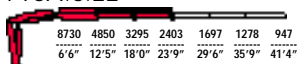
strength



F90A.0.21



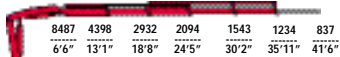
F90A.0.22



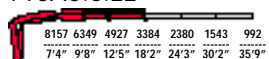
F90A.0.23



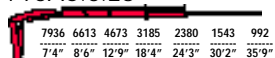
F90A.0.24



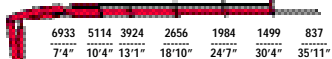
F90AC.0.22



F90AC.0.23



F90AC.0.24



F90A.0.23 L061



"L" SERIE



F90A.0.21	61191	18'4"	5'6"	370	8632	4640	5	24	2116	7'3"	2'3"	6'5"
F90A.0.22	60468	24'3"	11'3"	370	8632	4640	5	24	2259	7'3"	2'4"	6'5"
F90A.0.23	58949	30'4"	17'0"	370	8632	4640	5	24	2447	7'3"	2'4"	6'5"
F90A.0.24	57502	36'5"	22'9"	370	8632	4640	5	24	2579	7'3"	2'4"	6'5"
F90AC.0.22	61914	18'8"	8'6"	370	8632	4210	5	24	2182	7'3"	2'4"	6'5"
F90AC.0.23	60468	24'9"	14'5"	370	8632	4210	5	24	2369	7'3"	2'4"	6'5"
F90AC.0.24	53090	30'10"	20'0"	370	8632	4210	5	24	2513	7'3"	2'4"	6'5"
F90A.0.23 L061	58949	40'4"	20'11"	370	8632	4640	5	24	2744	7'3"	2'10"	6'5"



STANDARD

FX500 Fassi Electronic Control control	FSC Fassi Stability Control control	MOL Manual Outriggers Lock control	CPM Crane Position Monitoring control
MPES Multi Power Extension System performance			
UHSS Ultra High Strength Steel strength	FWD Fewer Welds Design strength	CQ Cast Quality strength	RPS Rack and Pinion System strength

STANDARD

D850 Digital Multifunction Distributor Bank control	RCH/RCS Radio Remote Control control	FX500 Fassi Electronic Control control	FSC Fassi Stability Control control
MOL Manual Outriggers Lock control	CPM Crane Position Monitoring control	FS Flow Sharing performance	MPES Multi Power Extension System performance
UHSS Ultra High Strength Steel strength	FWD Fewer Welds Design strength	CQ Cast Quality strength	RPS Rack and Pinion System strength

active

e-active



F95A.0.21

9744	4872	3406	2458	1796	1256
6'6"	13'5"	19'4"	25'11"	32'7"	39'4"

F95A.0.22

9501	4596	3163	2391	1763	1256	914
6'6"	13'9"	19'8"	25'11"	32'7"	39'4"	46'1"

F95A.0.23

9259	3681	2932	2171	1697	1212	881
6'6"	16'6"	19'10"	26'0"	32'7"	39'4"	46'1"

F95A.0.24

9082	4133	2755	1995	1521	1201	859
6'6"	14'3"	20'2"	26'4"	32'11"	39'4"	46'3"

F95AC.0.22

9612	6018	4651	3240	2182	1278	881
6'6"	10'9"	13'11"	20'2"	27'0"	33'9"	40'6"

F95AC.0.23

9391	5720	4232	3020	2116	1278	881
6'6"	10'11"	14'9"	20'6"	27'0"	33'9"	40'6"

F95AC.0.24

8619	5114	3902	2634	1719	1267	859
6'6"	11'3"	14'7"	20'10"	27'4"	33'9"	40'8"

F95A.0.22 L102

2028	1113	892	595	407
31'0"	35'1"	41'0"	46'10"	52'11"

F95A.0.23 L102

683	518	330	220
41'8"	47'6"	53'5"	59'6"



F95A.0.21	65603	20'0"	5'10"	390	13058	4210	7	24	2447	7'6"	2'4"	7'2"
F95A.0.22	63433	26'6"	12'1"	390	13058	4210	7	24	2678	7'6"	2'4"	7'2"
F95A.0.23	61191	33'3"	18'8"	390	13058	4210	7	24	2899	7'6"	2'4"	7'2"
F95A.0.24	59745	40'2"	25'3"	390	13058	4210	7	24	3086	7'8"	2'4"	7'2"
F95AC.0.22	65603	20'8"	9'4"	390	13058	4210	7	24	2579	7'8"	2'4"	7'2"
F95AC.0.23	62638	27'6"	15'10"	390	13058	4210	7	24	2788	7'8"	2'4"	7'2"
F95AC.0.24	58226	34'3"	22'5"	390	13058	3920	7	24	2976	7'9"	2'4"	7'2"
F95A.0.22 L102	63433	47'8"	23'11"	390	13058	4210	7	24	3373	7'7"	2'9"	7'2"
F95A.0.23 L102	61191	54'3"	30'6"	390	13058	4210	7	24	3593	7'7"	2'9"	7'2"



STANDARD

D850
Digital Multifunction
Distributor Bank
control

RCH/RCS
Radio Remote
Control
control

FX500
Fassi Electronic
Control
control

FSC
Fassi Stability
Control
control

MOL
Manual
Outriggers Lock
control

CPM
Crane Position
Monitoring
control

FS
Flow Sharing
performance

MPES
Multi Power
Extension System
performance

XP
Extra Power
performance

UHSS
Ultra High
Strength Steel
strength

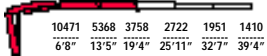
FWD
Fewer Welds
Design
strength

CQ
Cast Quality
strength

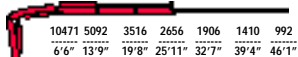
RPS
Rack and Pinion
System
strength



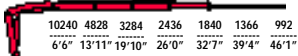
F105A.0.21



F105A.0.22



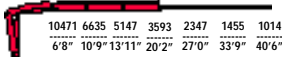
F105A.0.23



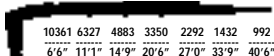
F105A.0.24



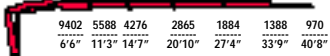
F105AC.0.22



F105AC.0.23



F105AC.0.24



F105A.0.22 L102



F105A.0.23 L102



F105A.0.21	10,09	20'0"	5'10"	390	13058	31,0	7	24	2447	7'6"	2'5"	7'2"
F105A.0.22	9,68	26'6"	12'1"	390	13058	31,0	7	24	2678	7'6"	2'5"	7'2"
F105A.0.23	9,38	33'3"	18'8"	390	13058	31,0	7	24	2899	7'6"	2'5"	7'2"
F105A.0.24	9,17	40'2"	25'3"	390	13058	31,0	7	24	3086	7'8"	2'5"	7'2"
F105AC.0.22	9,99	20'8"	9'4"	390	13058	31,0	7	24	2579	7'8"	2'5"	7'2"
F105AC.0.23	9,79	27'6"	15'10"	390	13058	31,0	7	24	2788	7'8"	2'5"	7'2"
F105AC.0.24	8,77	34'3"	22'5"	390	13058	31,0	7	24	2976	7'9"	2'5"	7'2"
F105A.0.22 L102	9,68	47'8"	23'11"	390	13058	31,0	7	24	3373	7'7"	2'9"	7'2"
F105A.0.23 L102	9,38	54'3"	30'6"	390	13058	31,0	7	24	3593	7'7"	2'9"	7'2"



STANDARD

<p>FX500 Fassi Electronic Control</p> <p>control</p>	<p>FSC Fassi Stability Control</p> <p>control</p>	<p>MOL Manual Outriggers Lock</p> <p>control</p>	<p>CPM Crane Position Monitoring</p> <p>control</p>
<p>MPES Multi Power Extension System</p> <p>performance</p>			
<p>UHSS Ultra High Strength Steel</p> <p>strength</p>	<p>FWD Fewer Welds Design</p> <p>strength</p>	<p>CQ Cast Quality</p> <p>strength</p>	<p>RPS Rack and Pinion System</p> <p>strength</p>

STANDARD

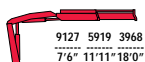
<p>D850 Digital Multifunction Distributor Bank</p> <p>control</p>	<p>RCH/RCS Radio Remote Control</p> <p>control</p>	<p>FX500 Fassi Electronic Control</p> <p>control</p>	<p>FSC Fassi Stability Control</p> <p>control</p>	<p>MOL Manual Outriggers Lock</p> <p>control</p>
<p>CPM Crane Position Monitoring</p> <p>control</p>	<p>FS Flow Sharing</p> <p>performance</p>	<p>MPES Multi Power Extension System</p> <p>performance</p>		
<p>UHSS Ultra High Strength Steel</p> <p>strength</p>	<p>FWD Fewer Welds Design</p> <p>strength</p>	<p>CQ Cast Quality</p> <p>strength</p>	<p>RPS Rack and Pinion System</p> <p>strength</p>	

active

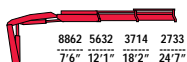
e-active



F110B.0.21



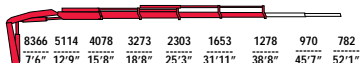
F110B.0.22



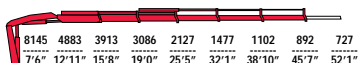
F110B.0.23



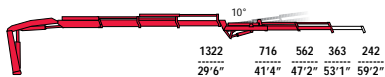
F110B.0.24



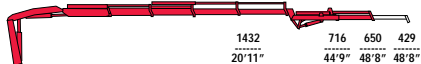
F110B.0.25



F110B.0.23 L102



F110B.0.24 L061



F110B.0.21	71534	18'10"	6'0"	410	13058	4430	7-10	24	2447	7'9"	2'6"	7'1"
F110B.0.22	68569	25'7"	12'5"	410	13058	4430	7-10	24	2689	7'9"	2'6"	7'1"
F110B.0.23	67122	32'5"	19'2"	410	13058	4430	7-10	24	2921	7'9"	2'6"	7'1"
F110B.0.24	65603	39'6"	25'11"	410	13058	4430	7-10	24	3130	8'1"	2'6"	7'1"
F110B.0.25	63433	46'5"	32'7"	410	13058	4430	7-10	24	3328	8'0"	2'10"	7'1"
F110B.0.23 L102	67122	54'5"	31'0"	410	13058	4430	7-10	24	3758	7'0"	2'11"	7'11"
F110B.0.24 L061	65603	49'6"	29'10"	410	13058	4430	7-10	24	3604	7'10"	2'11"	8'1"



STANDARD

FX500 Fassi Electronic Control control	FSC Fassi Stability Control control	MOL Manual Outriggers Lock control	CPM Crane Position Monitoring control
PROLINK Progressive Link performance	MPES Multi Power Extension System performance		
UHSS Ultra High Strength Steel strength	FWD Fewer Welds Design strength	CQ Cast Quality strength	RPS Rack and Pinion System strength

STANDARD

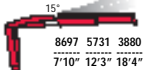
D850 Digital Multifunction Distributor Bank control	RCH/RCS Radio Remote Control control	FX500 Fassi Electronic Control control	FSC Fassi Stability Control control	MOL Manual Outriggers Lock control
CPM Crane Position Monitoring control	FS Flow Sharing performance	MPES Multi Power Extension System performance	PROLINK Progressive Link performance	
UHSS Ultra High Strength Steel strength	FWD Fewer Welds Design strength	CQ Cast Quality strength	RPS Rack and Pinion System strength	

dynamic

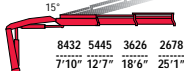
e-dynamic



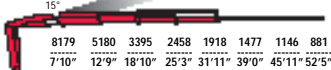
F110B.1.21



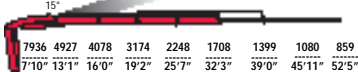
F110B.1.22



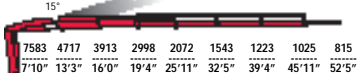
F110B.1.23



F110B.1.24



F110B.1.25



F110B.1.23 L102



F110B.1.24 L102



“L”
SERIE

F110B.1.25 L061



F110B.1.21	71534	18'6"	6'0"	410	13058	4430	7-10	24	2491	7'8"	2'6"	7'1"
F110B.1.22	68569	25'3"	12'5"	410	13058	4430	7-10	24	2733	7'8"	2'6"	7'1"
F110B.1.23	66327	32'1"	19'2"	410	13058	4430	7-10	24	2965	7'8"	2'6"	7'1"
F110B.1.24	64880	39'2"	26'2"	410	13058	4430	7-10	24	3174	7'8"	2'6"	7'1"
F110B.1.25	62638	46'1"	32'7"	410	13058	4430	7-10	24	3373	7'8"	2'10"	7'1"
F110B.1.23 L102	66327	54'3"	31'0"	410	13058	4430	7-10	24	3802	7'10"	2'11"	8'2"
F110B.1.24 L102	64880	60'10"	37'8"	410	13058	4430	7-10	24	4045	7'8"	2'11"	8'1"
F110B.1.25 L061	62638	56'3"	36'6"	410	13058	4430	7-10	24	3847	7'9"	3'3"	8'2"



STANDARD

<p>FX500 Fassi Electronic Control</p> <p>control</p>	<p>FSC Fassi Stability Control</p> <p>control</p>	<p>MOL Manual Outriggers Lock</p> <p>control</p>	<p>CPM Crane Position Monitoring</p> <p>control</p>
<p>PROLINK Progressive Link</p> <p>performance</p>	<p>MPES Multi Power Extension System</p> <p>performance</p>		
<p>UHSS Ultra High Strength Steel</p> <p>strength</p>	<p>FWD Fewer Welds Design</p> <p>strength</p>	<p>CQ Cast Quality</p> <p>strength</p>	<p>RPS Rack and Pinion System</p> <p>strength</p>

STANDARD

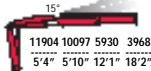
<p>D850 Digital Multifunction Distributor Bank</p> <p>control</p>	<p>RCH/RCS Radio Remote Control</p> <p>control</p>	<p>FX500 Fassi Electronic Control</p> <p>control</p>	<p>FSC Fassi Stability Control</p> <p>control</p>	<p>MOL Manual Outriggers Lock</p> <p>control</p>
<p>CPM Crane Position Monitoring</p> <p>control</p>	<p>FS Flow Sharing</p> <p>performance</p>	<p>MPES Multi Power Extension System</p> <p>performance</p>	<p>PROLINK Progressive Link</p> <p>performance</p>	
<p>UHSS Ultra High Strength Steel</p> <p>strength</p>	<p>FWD Fewer Welds Design</p> <p>strength</p>	<p>CQ Cast Quality</p> <p>strength</p>	<p>RPS Rack and Pinion System</p> <p>strength</p>	

dynamic

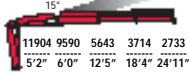
e-dynamic



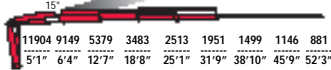
F110B.2.21



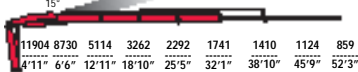
F110B.2.22



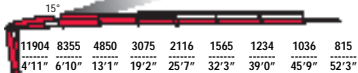
F110B.2.23



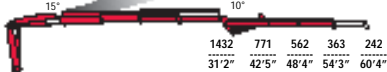
F110B.2.24



F110B.2.25



F110B.2.23 L102



F110B.2.24 L102



F110B.2.25 L061



"L" SERIE

F110B.2.21	72258	18'8"	6'0"	410	13058	4500	7-10	24	2535	7'8"	2'6"	7'2"
F110B.2.22	70015	25'5"	12'5"	410	13058	4500	7-10	24	2777	7'8"	2'6"	7'2"
F110B.2.23	67846	32'3"	19'2"	410	13058	4500	7-10	24	3009	7'8"	2'6"	7'2"
F110B.2.24	66327	39'4"	26'2"	410	13058	4500	7-10	24	3218	7'8"	2'6"	7'2"
F110B.2.25	64157	46'3"	32'7"	410	13058	4500	7-10	24	3417	7'8"	2'10"	7'2"
F110B.2.23 L102	67846	54'3"	31'0"	410	13058	4500	7-10	24	3847	7'8"	2'11"	8'4"
F110B.2.24 L102	66327	61'0"	37'8"	410	13058	4500	7-10	24	4089	7'8"	2'11"	8'3"
F110B.2.25 L061	64157	56'3"	36'6"	410	13058	4500	7-10	24	3891	7'8"	3'3"	8'4"



STANDARD

D850
Digital Multifunction
Distributor Bank
control

RCH/RCS
Radio Remote
Control
control

FX500
Fassi Electronic
Control
control

FSC
Fassi Stability
Control
control

MOL
Manual
Outriggers Lock
control

CPM
Crane Position
Monitoring
control

FS
Flow Sharing
performance

MPES
Multi Power
Extension System
performance

XP
Extra Power
performance

UHSS
Ultra High
Strength Steel
strength

FWD
Fewer Welds
Design
strength

CQ
Cast Quality
strength

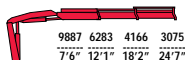
RPS
Rack and Pinion
System
strength



F120B.0.21



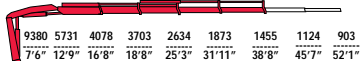
F120B.0.22



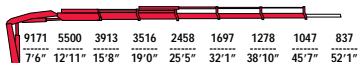
F120B.0.23



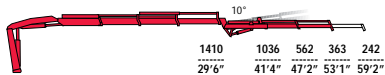
F120B.0.24



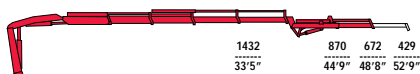
F120B.0.25



F120B.0.23 L102



F120B.0.24 L061



F120B.0.21	79635	18'10"	6'0"	410	13058	4860	7-10	24	2447	7'9"	2'6"	7'1"
F120B.0.22	75947	25'7"	12'5"	410	13058	4860	7-10	24	2689	7'9"	2'6"	7'1"
F120B.0.23	74500	32'5"	19'2"	410	13058	4860	7-10	24	2921	7'9"	2'6"	7'1"
F120B.0.24	72981	39'6"	25'11"	410	13058	4860	7-10	24	3130	8'1"	2'6"	7'1"
F120B.0.25	71534	46'5"	32'7"	410	13058	4860	7-10	24	3328	8'0"	2'10"	7'1"
F120B.0.23 L102	74500	54'5"	31'0"	410	13058	4860	7-10	24	3758	7'0"	2'11"	7'11"
F120B.0.24 L061	72981	49'6"	29'10"	410	13058	4860	7-10	24	3604	7'10"	2'11"	8'1"



STANDARD

e-dynamic

D850
Digital Multifunction
Distributor Bank
control

RCH/RCS
Radio Remote
Control
control

FX500
Fasi Electronic
Control
control

FSC
Fasi Stability
Control
control

MOL
Manual
Outriggers Lock
control

CPM
Crane Position
Monitoring
control

FS
Flow Sharing
performance

MPES
Multi Power
Extension System
performance

XP
Extra Power
performance

PROLINK
Progressive
Link
performance

UHSS
Ultra High
Strength Steel
strength

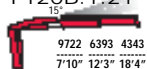
FWD
Fewer Welds
Design
strength

CQ
Cast Quality
strength

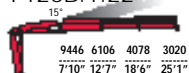
RPS
Rack and Pinion
System
strength



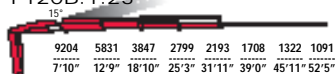
F120B.1.21



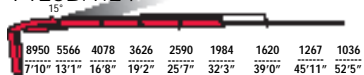
F120B.1.22



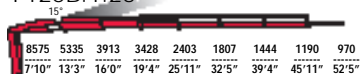
F120B.1.23



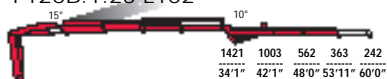
F120B.1.24



F120B.1.25



F120B.1.23 L102



F120B.1.24 L102



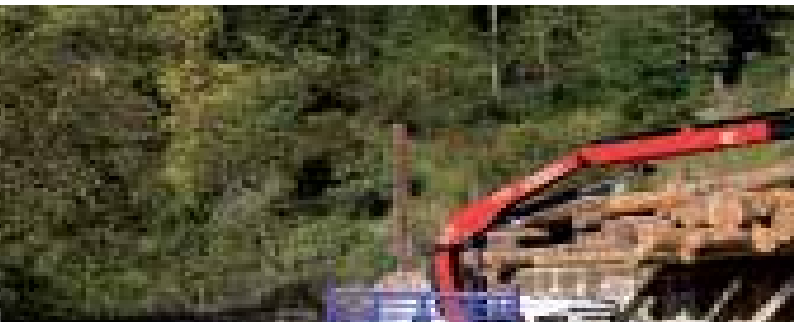
F120B.1.25 LO61



“L”
SERIE



F120B.1.21	79635	18'6"	6'0"	410	13058	4860	7-10	24	2491	7'8"	2'6"	7'1"
F120B.1.22	77393	25'3"	12'5"	410	13058	4860	7-10	24	2733	7'8"	2'6"	7'1"
F120B.1.23	74500	32'1"	19'2"	410	13058	4860	7-10	24	2965	7'8"	2'6"	7'1"
F120B.1.24	72981	39'2"	26'2"	410	13058	4860	7-10	24	3174	7'8"	2'6"	7'1"
F120B.1.25	70811	46'1"	32'7"	410	13058	4860	7-10	24	3373	7'8"	2'10"	7'1"
F120B.1.23 L102	74500	54'3"	31'0"	410	13058	4860	7-10	24	3802	7'10"	2'11"	8'2"
F120B.1.24 L102	72981	60'10"	37'8"	410	13058	4860	7-10	24	4045	7'8"	2'11"	8'1"
F120B.1.25 LO61	70811	56'3"	36'6"	410	13058	4860	7-10	24	3847	7'9"	3'3"	8'2"



STANDARD

e-dynamic

D850
Digital Multifunction
Distributor Bank
control

RCH/RCS
Radio Remote
Control
control

FX500
Fasi Electronic
Control
control

FSC
Fasi Stability
Control
control

MOL
Manual
Outriggers Lock
control

CPM
Crane Position
Monitoring
control

FS
Flow Sharing
performance

MPES
Multi Power
Extension System
performance

XP
Extra Power
performance

PROLINK
Progressive
Link
performance

UHSS
Ultra High
Strength Steel
strength

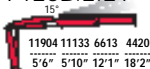
FWD
Fewer Welds
Design
strength

CQ
Cast Quality
strength

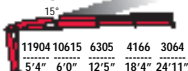
RPS
Rack and Pinion
System
strength



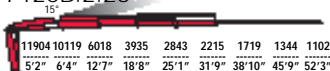
F120B.2.21



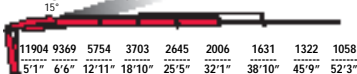
F120B.2.22



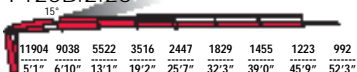
F120B.2.23



F120B.2.24



F120B.2.25



F120B.2.23 L102



F120B.2.24 L102



F120B.2.25 L061



“L”
SERIE

F120B.2.21	80286	18'8"	6'0"	410	13058	4930	7-10	24	2535	7'8"	2'6"	7'2"
F120B.2.22	78840	25'5"	12'5"	410	13058	4930	7-10	24	2777	7'8"	2'6"	7'2"
F120B.2.23	75947	32'3"	19'2"	410	13058	4930	7-10	24	3009	7'8"	2'6"	7'2"
F120B.2.24	74500	39'4"	26'2"	410	13058	4930	7-10	24	3218	7'8"	2'6"	7'2"
F120B.2.25	72330	46'3"	32'7"	410	13058	4930	7-10	24	3417	7'8"	2'10"	7'2"
F120B.2.23 L102	75947	54'3"	31'0"	410	13058	4930	7-10	24	3847	7'8"	2'11"	8'4"
F120B.2.24 L102	74500	61'0"	37'8"	410	13058	4930	7-10	24	4089	7'8"	2'11"	8'3"
F120B.2.25 L061	72330	56'3"	36'6"	410	13058	4930	7-10	24	3891	7'8"	3'3"	8'4"



STANDARD

D850
Digital Multifunction
Distributor Bank
control

RCH/RCS
Radio Remote
Control
control

FX500
Fasi Electronic
Control
control

FSC
Fasi Stability
Control
control

MOL
Manual
Outriggers Lock
control

CPM
Crane Position
Monitoring
control

FS
Flow Sharing
performance

MPES
Multi Power
Extension System
performance

XP
Extra Power
performance

PROLINK
Progressive
Link
performance

UHSS
Ultra High
Strength Steel
strength

FWD
Fewer Welds
Design
strength

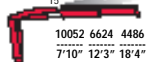
CQ
Cast Quality
strength

RPS
Rack and Pinion
System
strength

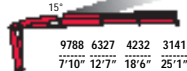
e-dynamic



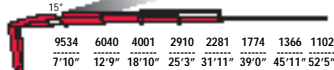
F125A.1.21



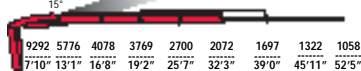
F125A.1.22



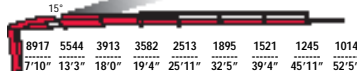
F125A.1.23



F125A.1.24



F125A.1.25



F125A.1.23 L102



F125A.1.24 L102



F125A.1.25 L061



"L" SERIE

F125A.1.21	82601	18'6"	6'0"	410	13058	5010	7-10	24	2491	7'8"	2'6"	7'1"
F125A.1.22	79635	25'3"	12'5"	410	13058	5010	7-10	24	2733	7'8"	2'6"	7'1"
F125A.1.23	77393	32'1"	19'2"	410	13058	5010	7-10	24	2965	7'8"	2'6"	7'1"
F125A.1.24	75947	39'2"	26'2"	410	13058	5010	7-10	24	3174	7'8"	2'6"	7'1"
F125A.1.25	73704	46'1"	32'7"	410	13058	5010	7-10	24	3373	7'8"	2'10"	7'1"
F125A.1.23 L102	77393	54'3"	31'0"	410	13058	5010	7-10	24	3802	7'10"	2'11"	8'2"
F125A.1.24 L102	75947	60'10"	37'8"	410	13058	5010	7-10	24	4045	7'8"	2'11"	8'1"
F125A.1.25 L061	73704	56'3"	36'6"	410	13058	5010	7-10	24	3847	7'9"	3'3"	8'2"



STANDARD

ADC
Automatic
Dynamic Control
control

D850
Digital Multifunction
Distributor Bank
control

RCH/RCS
Radio Remote
Control
control

FX500
Fawl Electronic
Control
control

FSC
Fawl Stability
Control
control

MOL
Manual
Outriggers Lock
control

CPM
Crane Position
Monitoring
control

FS
Flow Sharing
performance

MPES
Multi Power
Extension System
performance

XP
Extra Power
performance

PROLINK
Progressive
Link
performance

UHSS
Ultra High
Strength Steel
strength

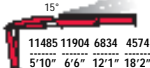
FWD
Fewer Welds
Design
strength

CQ
Cast Quality
strength

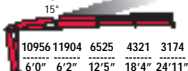
RPS
Rack and Pinion
System
strength



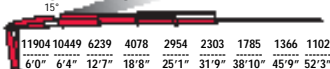
F125A.2.21



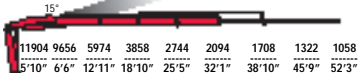
F125A.2.22



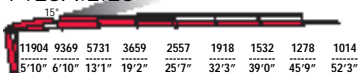
F125A.2.23



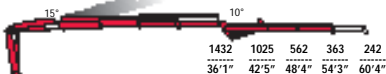
F125A.2.24



F125A.2.25



F125A.2.23 L102



F125A.2.24 L102



F125A.2.25 L061



F125A.2.21	83324	18'8"	6'0"	410	13058	5080	7-10	24	2535	7'8"	2'6"	7'2"
F125A.2.22	81082	25'5"	12'5"	410	13058	5080	7-10	24	2777	7'8"	2'6"	7'2"
F125A.2.23	78912	32'3"	19'2"	410	13058	5080	7-10	24	3009	7'8"	2'6"	7'2"
F125A.2.24	77393	39'4"	26'2"	410	13058	5080	7-10	24	3218	7'8"	2'6"	7'2"
F125A.2.25	75223	46'3"	32'7"	410	13058	5080	7-10	24	3417	7'8"	2'10"	7'2"
F125A.2.23 L102	78912	54'3"	31'0"	410	13058	5080	7-10	24	3847	7'8"	2'11"	8'4"
F125A.2.24 L102	77393	61'0"	37'8"	410	13058	5080	7-10	24	4089	7'8"	2'11"	8'3"
F125A.2.25 L061	75223	56'3"	36'6"	410	13058	5080	7-10	24	3891	7'8"	3'3"	8'4"

SYMBOLS



Lifting Capacity (lbs.ft)



Standard reach (ft)



Hydraulic extension (ft)



Rotation (°)



Rotation torque (lbs.ft)



Working pressure (psi)



Pump capacity (gpm)



Oil tank capacity (gal)



Crane weight (lbs)



Crane length (ft)



Crane width (ft)



Crane height (ft)



CRANES WITHOUT COMPROMISE



FASSI GRU S.p.A.

24021 Albino (Bergamo) ITALY - via Roma,110

Tel. +39 035 776400 - Fax +39 035 755020

<http://www.fassi.com>

e-mail: fassi@fassi.com