

TECHNICAL DATA F390SE.22

Lifting capacity	lbs.ft 270868
Standard reach	ft 62'0"
Hydraulic extension	ft 35'0"
Rotation arc	430°
Rotation torque	lbs.ft 49117
Working pressure	psi 4206
Pump capacity	gal/min 16+16
Oil tank capacity	gals 66
Outriggers spread crane	ft 22'6"
Supplementary outriggers	ft 18'1"
Degree of boom elevator	85°

TECHNICAL DATA F390SE.22

360°Rotation	sec. 60
Extension time	sec. 40+18
Retraction time	sec. 19+13
Inner boom elevation time	sec. 41
Outer boom elevation time	sec. 34

AVAILABLE CONTROL SYSTEMS

Dual side cross over ground control with radio remote
Top seat control
Top seat control with optional radio remote

"FULL LIFT" * DELIVERY F390SE.22

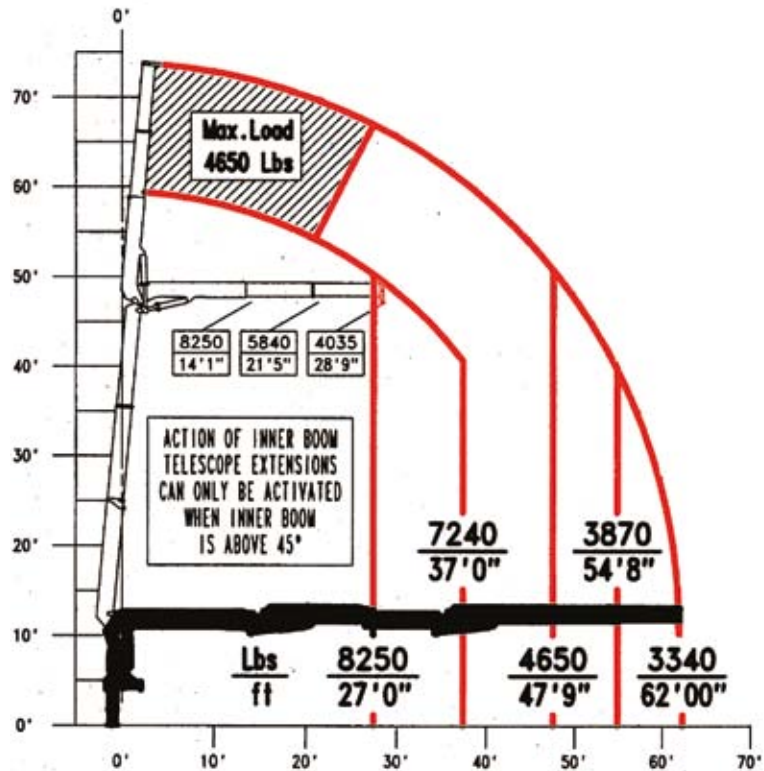
Height**	73'6"
Radius	54'10"

* Wallboard Lift Weight 12' x 4' x 1/2" Standard Board Full Lift: 34 sheets: 2,872 lbs with Hydraulic Fork & Rotator - 3,842 lbs
 **Measured at Boom Tip

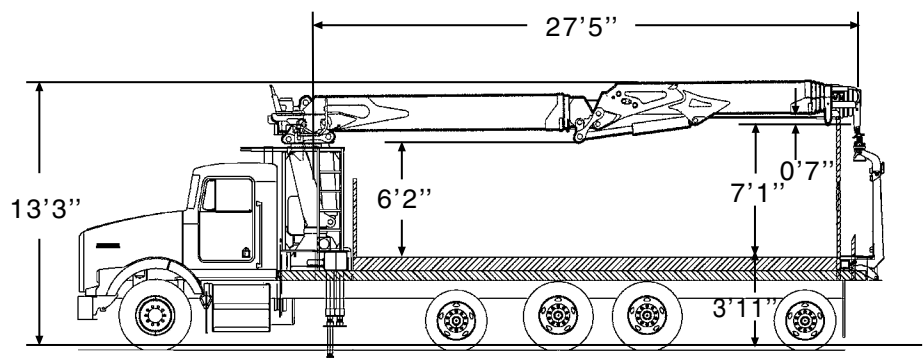
RECOMMENDATION

Easily Attainable 360° Stability @ 118% of Rated Capacity when Properly Installed by your Local Authorized Fassi Dealer.

F390SE.22



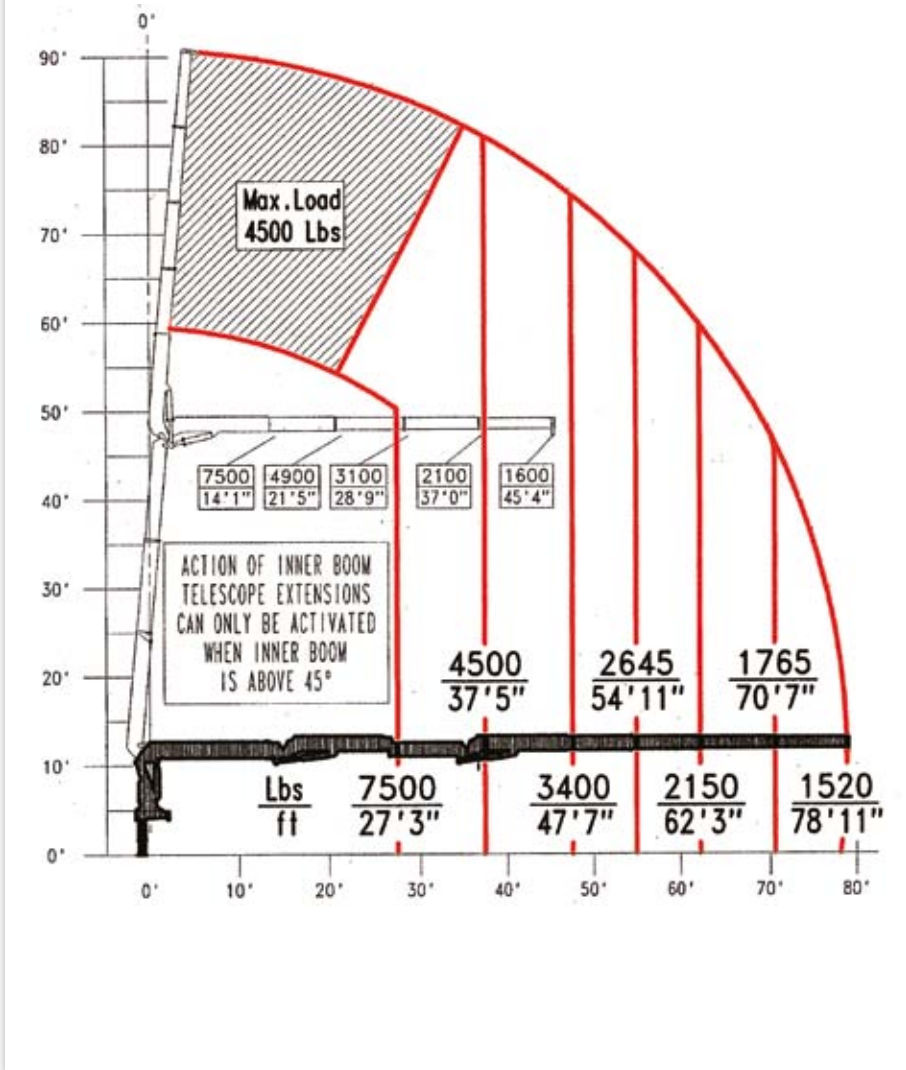
THE WEIGHT OF WALLBOARD FORK AND ROTATOR MUST BE DEDUCTED FROM LIFTING CHART



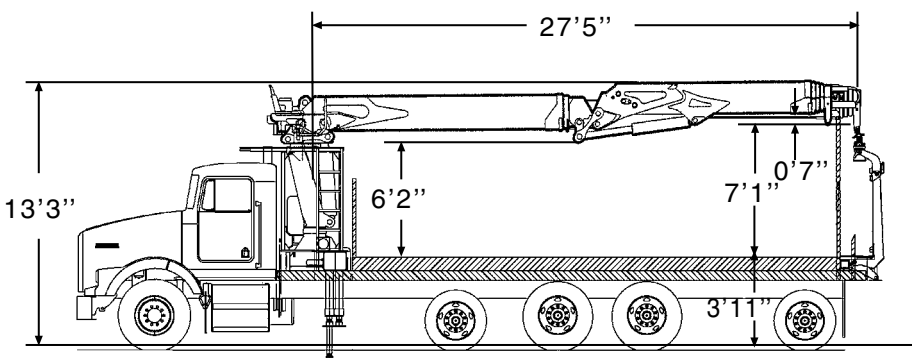
INSTALLATION

MINIMUM TRUCK SPECS Tandem axle frame RBM 3.0 million (per rail), W.B. 270" CA 192", FA 16,000 lbs, RA 34,000 lbs, GVW 50,000 lbs
RECOMMENDED TRUCK SPECS Tandem axle frame RBM 3.0 million (per rail), W.B. 270" CA192", FA 20,000 lbs, RA 44,000 lbs, GVW 64,000 lbs

F390SE.24



THE WEIGHT OF WALLBOARD FORK AND ROTATOR MUST BE DEDUCTED FROM LIFTING CHART



INSTALLATION

MINIMUM TRUCK SPECS Tandem axle frame RBM 3.0 million (per rail), W.B. 270" CA 192", FA 16,000 lbs, RA 34,000 lbs, GVW 50,000 lbs
RECOMMENDED TRUCK SPECS Tandem axle frame RBM 3.0 million (per rail), W.B. 270" CA192", FA 20,000 lbs, RA 44,000 lbs, GVW 64,000 lbs

TECHNICAL DATA		F390SE.24
Lifting capacity	lbs.ft	202524
Standard reach	ft	78'11"
Hydraulic extension	ft	51'5"
Rotation arc		430°
Rotation torque	lbs.ft	49117
Working pressure	psi	4360
Pump capacity	gal/min	16+16
Oil tank capacity	gals	66
Outriggers spread crane	ft	22'6"
Supplementary outriggers	ft	18'1"
Degree of boom elevator		85°

TECHNICAL DATA		F390SE.24
360° Rotation	sec.	60
Extension time	sec.	40+36
Retraction time	sec.	19+27
Inner boom elevation time	sec.	41
Outer boom elevation time	sec.	34

AVAILABLE CONTROL SYSTEMS	
Dual side cross over ground control with radio remote	
Top seat control	
Top seat control with optional radio remote	

"FULL LIFT" DELIVERY		F390SE.24
Height**		90'5"
Radius		42'1"
* Wallboard Lift Weight 12' x 4' x 1/2" Standard Board Full Lift: 34 sheets: 2,872 lbs with Hydraulic Fork & Rotator - 3,842 lbs **Measured at Boom Tip		

RECOMMENDATION	
Easily Attainable 360° Stability @ 118% of Rated Capacity when Properly installed by your Local Authorized Fassi Dealer.	