

TECHNICAL DATA F330SE.24

Lifting capacity	lbs.ft 168485
Standard reach	ft 58'9"
Hydraulic extension	ft 31'4"
Rotation arc	420°
Rotation torque	lbs.ft 34439
Working pressure	psi 3624
Pump capacity	gal/min 16+16
Oil tank capacity	gals 66
Outriggers spread crane	ft 22'6"
Supplementary outriggers	-
Degree of boom elevator	85°

TECHNICAL DATA F330SE.24

360°Rotation	sec. 35
Extension time	sec. 38
Retraction time	sec. 29
Inner boom elevation time	sec. 22
Outer boom elevation time	sec. 30

AVAILABLE CONTROL SYSTEMS

- Dual side cross over ground control with radio remote
- Top seat control
- Top seat control with optional radio remote

"FULL LIFT" * DELIVERY F330SE.24

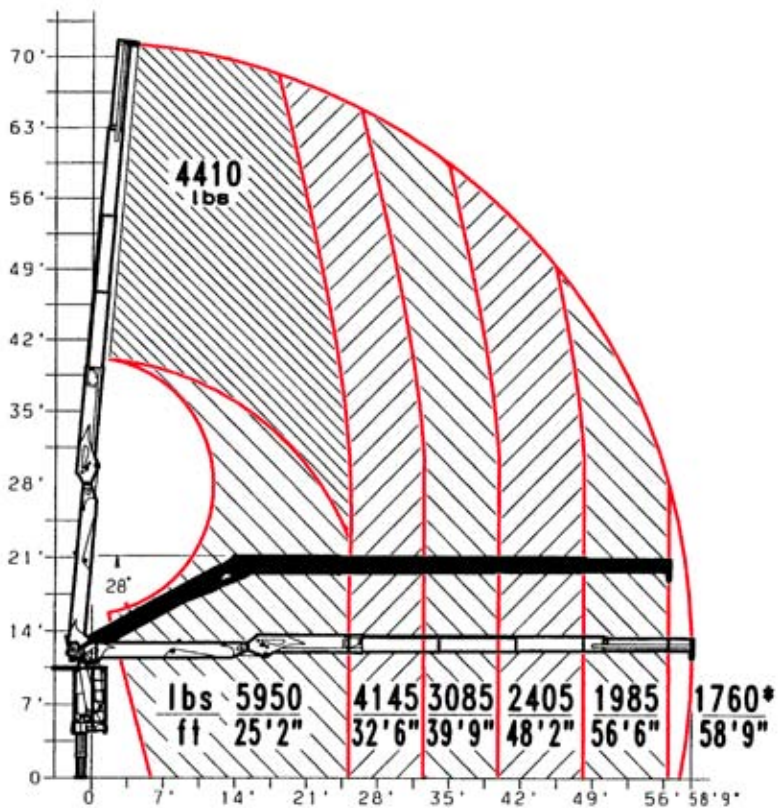
Height**	70'11"
Radius	31'11"

* Wallboard Lift Weight 12' x 4' x 1/2" Standard Board Full Lift: 34 sheets: 2,872 lbs with Hydraulic Fork & Rotator - 3,842 lbs
 **Measured at Boom Tip

RECOMMENDATION

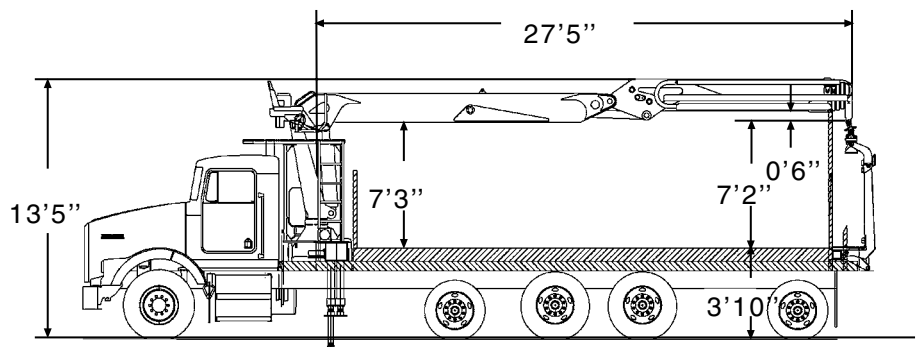
Easily Attainable 360° Stability @ 118% of Rated Capacity when Properly installed by your Local Authorized Fassi Dealer.

F330SE.24



*PLACING CAPACITY ONLY

THE WEIGHT OF WALLBOARD FORK AND ROTATOR MUST BE DEDUCTED FROM LIFTING CHART



INSTALLATION

MINIMUM TRUCK SPECS Tandem axle frame RBM 3.0 million (per rail), W.B. 270" CA 192", FA 16,000 lbs, RA 34,000 lbs, GVW 50,000 lbs
RECOMMENDED TRUCK SPECS Tandem axle frame RBM 3.0 million (per rail), W.B. 270" CA192", FA 20,000 lbs, RA 44,000 lbs, GVW 64,000 lbs