

F600SE.44

F600SE.44



WALLBOARD CRANES SPECIALIST

# F600SE

## *A Tireless Muscle of Steel*

The F600SE.44 offers the widest and most functional range of wallboard cranes on the market. This is the result of over 35 years of experience of day-to-day contact with specialized users in this competitive sector.

A crane designed to last for intensive use over time, to ensure an exceptional resistance to extreme working conditions.

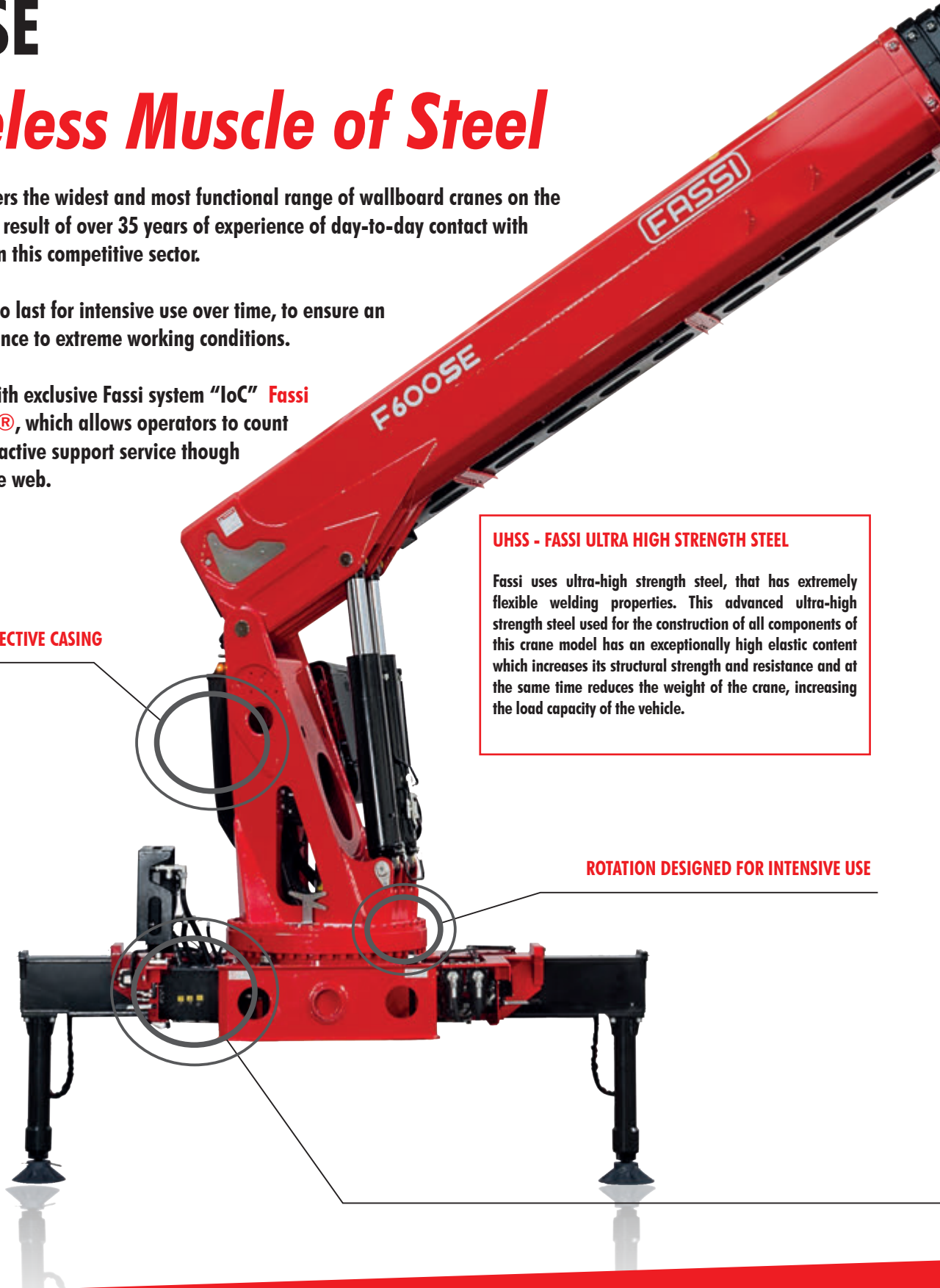
Crane available with exclusive Fassi system "IoC" **Fassi Internet of Cranes®**, which allows operators to count on a permanently active support service through the potential of the web.

**CARBOON LOOK PROTECTIVE CASING**

**UHSS - FASSI ULTRA HIGH STRENGTH STEEL**

Fassi uses ultra-high strength steel, that has extremely flexible welding properties. This advanced ultra-high strength steel used for the construction of all components of this crane model has an exceptionally high elastic content which increases its structural strength and resistance and at the same time reduces the weight of the crane, increasing the load capacity of the vehicle.

**ROTATION DESIGNED FOR INTENSIVE USE**



**IMC**  
Integral Machine Control  
control

**ADC**  
Automatic Dynamic Control  
control

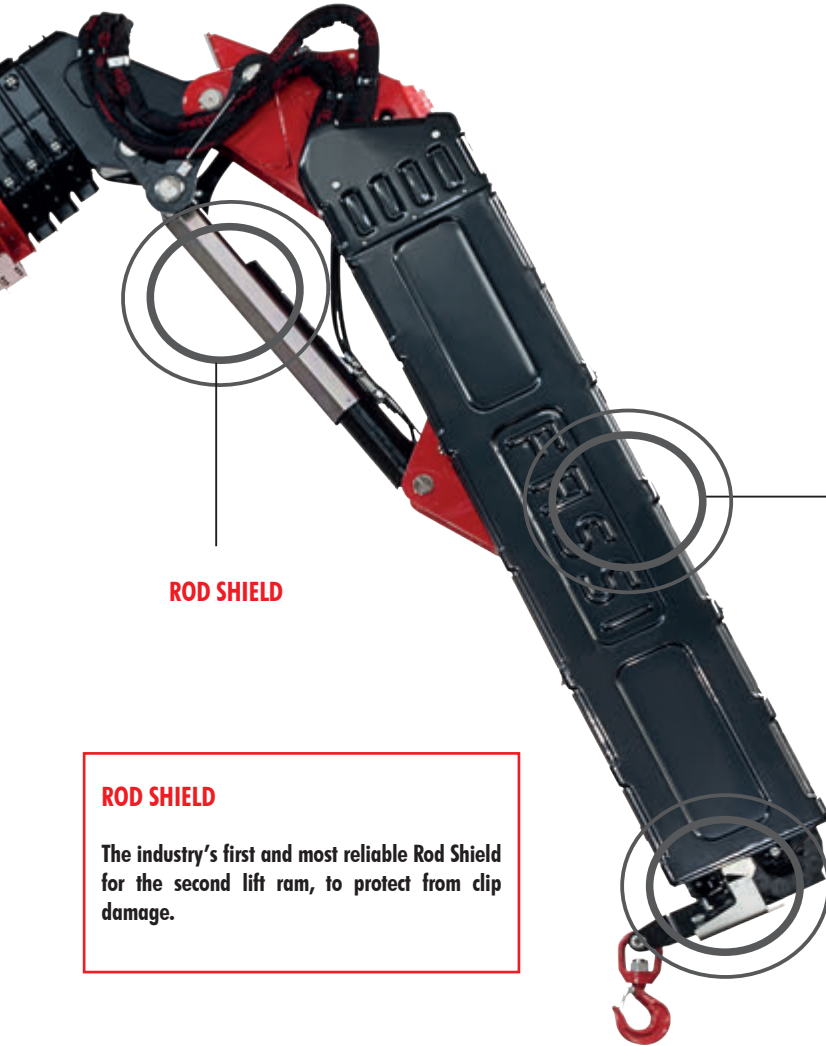
**D900**  
Digital Multifunction Distributor Bank  
control

**V7 RRC**  
Radio Remote Control  
control

**FX900**  
Fassi Electronic control  
control

**FX901**  
Touch Screen Display  
control

**OTC**  
Oil Temperature Control  
control



**DECAGONAL SECTION AND ENCASED PROTECTION**

Both booms have a decagonal cross-section to ensure maximum rigidity. Extension cylinder and all hoses are protectively encased inside the booms.

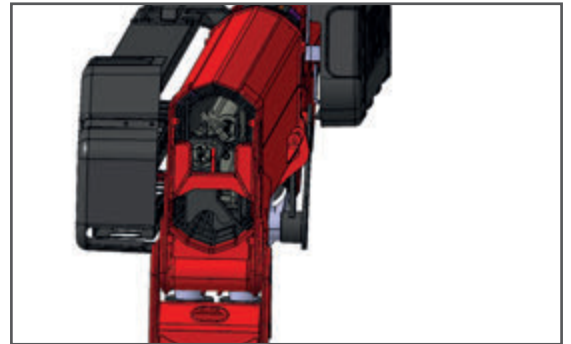
**CARBON LOOK PROTECTIVE CASING**

**MPES - MULTI POWER EXTENSION SYSTEM**

**ROD SHIELD**

**ROD SHIELD**

The industry's first and most reliable Rod Shield for the second lift ram, to protect from clip damage.



**FX901 - TOUCH SCREEN DISPLAY**

**MPES**

**MULTI POWER EXTENSION SYSTEM**

A Fassi system that guarantees an exceptional extension/retraction speed of the telescopic booms, built up by a set of equally powerful independent rams, linked in series connection and activated by a single control. Special independent fixing system of the extension rams to guarantee high vertical lifting performances.

**F600SE.44 - standard configuration**

**FS**  
Flow Sharing  
performance

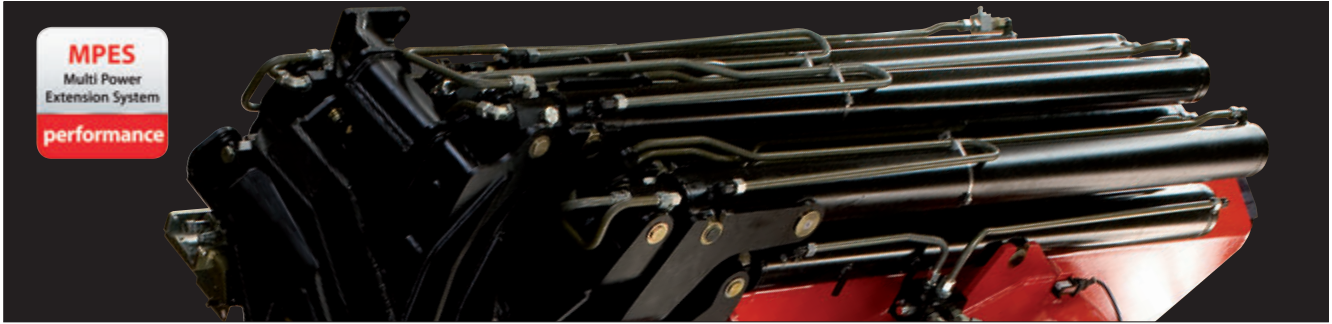
**XF**  
Extra Fast  
performance

**MPES**  
Multi Power Extension System  
performance

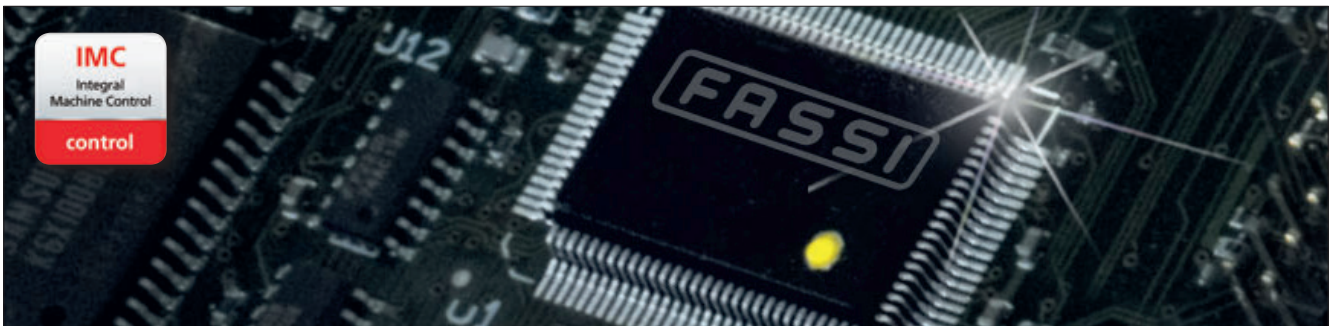
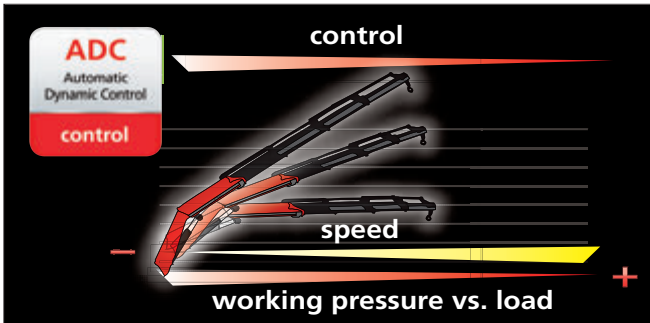
**UHSS**  
Ultra High Strength Steel  
strength

**options**

**FSC**  
Fassi Stability Control  
control

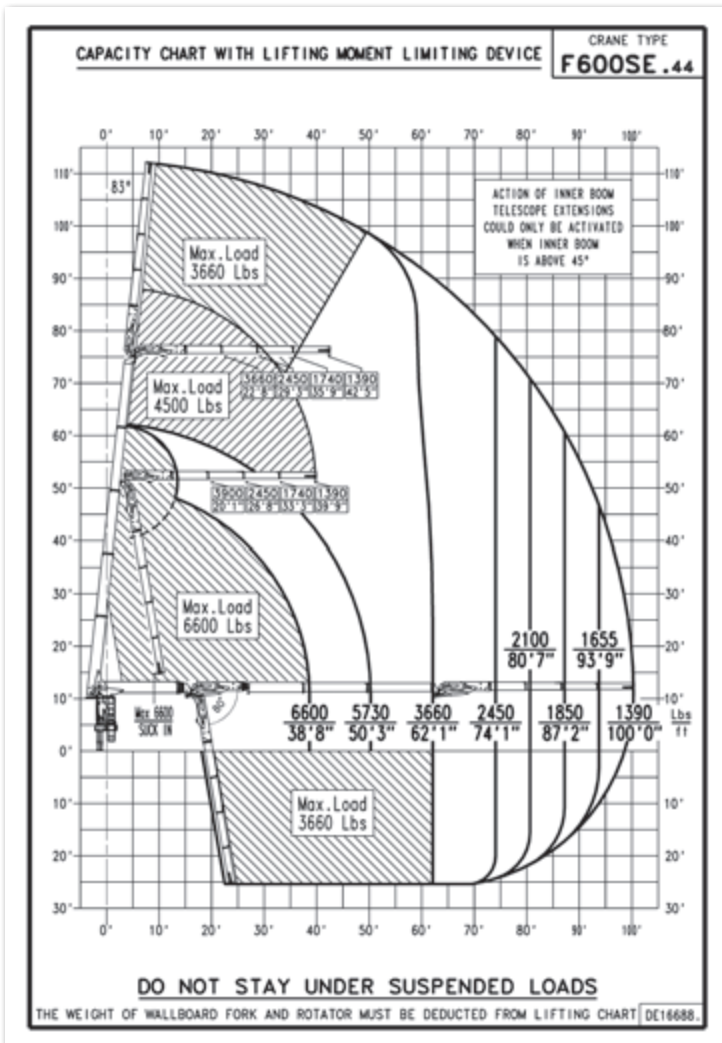


**MPES**  
Multi Power  
Extension System  
**performance**



**FX900**  
Fassi Electronic  
Control  
**control**

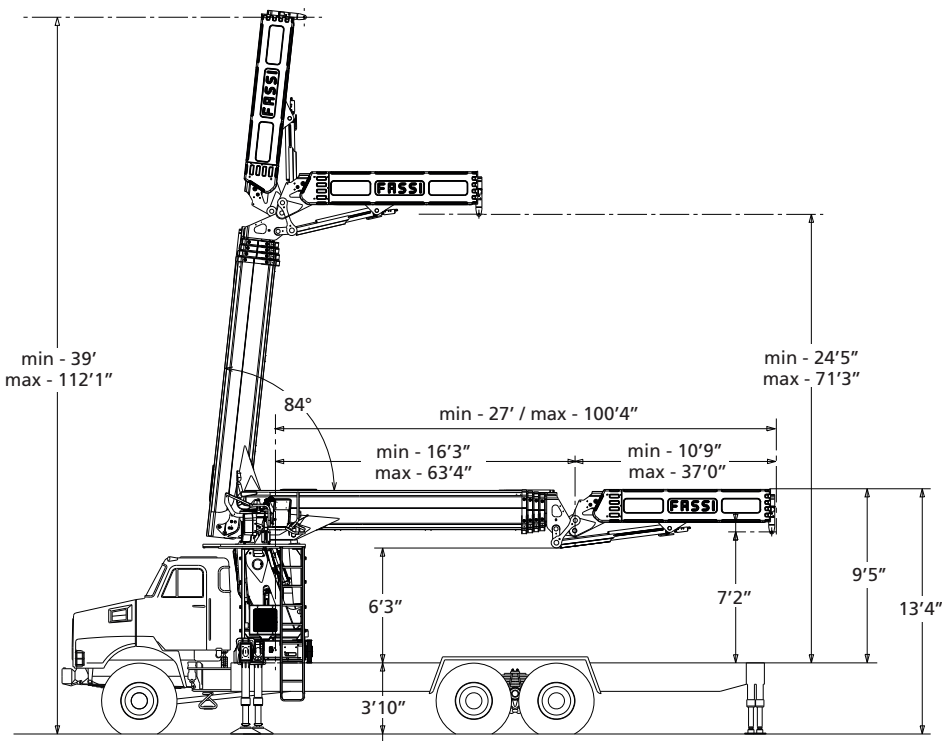
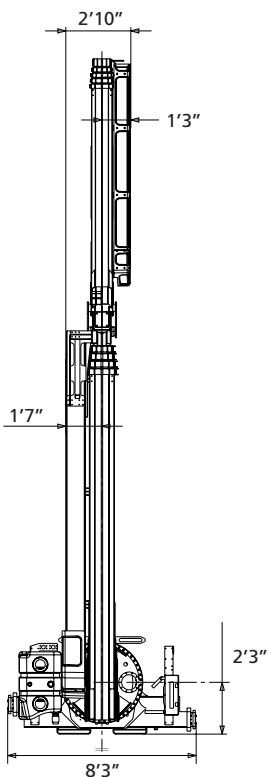
**GB** SYSTEM THAT ELECTRONICALLY CONTROLS THE LOAD CONDITIONS OF THE CRANE, OF THE HYDRAULIC AND MANUAL EXTENSIONS AND OF THE WINCH, WITH TECHNICAL AND FUNCTIONAL CHARACTERISTICS SUITED TO SPECIFIC CRANE MODELS, ESPECIALLY THOSE DESIGNED TO PROVIDE HIGH OPERATIONAL PERFORMANCES, EVEN IN THE MOST DIFFICULT WORKING CONDITIONS. MOREOVER IT HANDLES THE LIFTING MOMENT WITH THE POSSIBILITY TO ACTIVATE DIFFERENT WORK SECTORS, IN RELATION TO THE STABILITY CONDITION OF THE VEHICLE/CRANE UNIT.



TECHNICAL DATA	F600SE.44
Lifting capacity	289320 lbs.ft
Standard reach	100'0" ft
Hydraulic extension	73'0" ft
Rotation arc	360° continuous
Rotation torque	45 KNm
Working pressure	340 bar
Pump capacity	26 gal + 26 gal
Oil tank capacity	66 gal
Outriggers spread crane	26'10" ft
Supplementary outriggers	18'11"
Degree of boom elevator	83°
Weight	17195 lbs

**CERTIFIED  
DYNAMIC  
PERFORMANCE**

US Dynamic load diagrams calculated, tested and certified to lift the loads at the declared reaches unless indicated



# F600SE

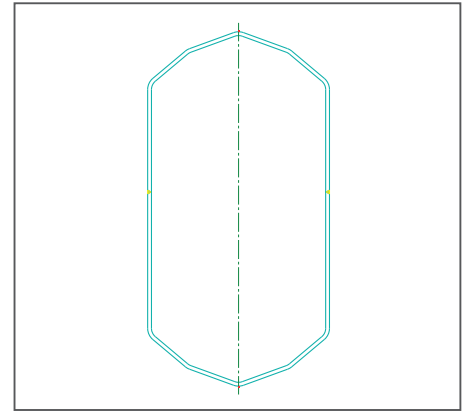
## FEATURES



**FX901 - Touch Screen Display**  
7" graphic color display with touchscreen technology. It allows to display detailed information concerning stabilization and crane working conditions.



**V7RRC - Radio Remote Control**  
The new V7 RRC have a large graphic display for the remote control of the crane's functions and, on request, also options regarding the vehicle and the stabilisers. Advanced control and command interface which renders the use of their cranes ever more precise and efficient.



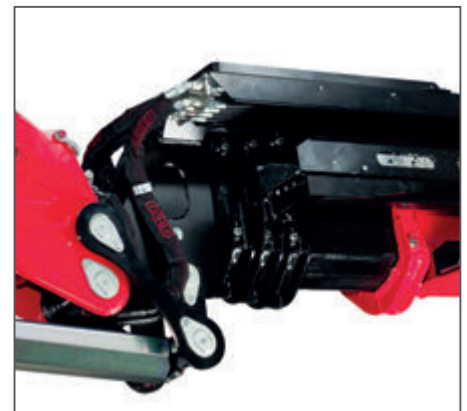
**DECAGONAL SECTION**  
Both booms have a decagonal section to ensure maximum rigidity.



**CONTINUOUS ROTATION** with double roller and ball guide turntable and motoreducer, designed for intensive use.



**CARBON LOOK CASING** New protection "carbon look" casing, by far more captivating from an aesthetic point of view and resistant

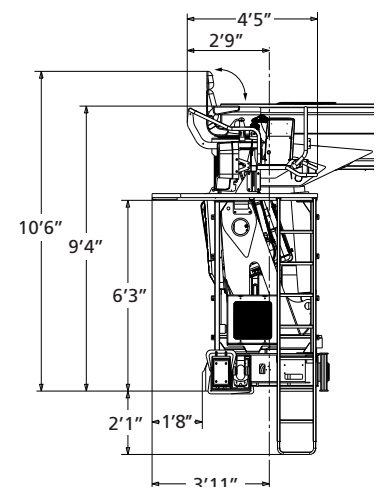
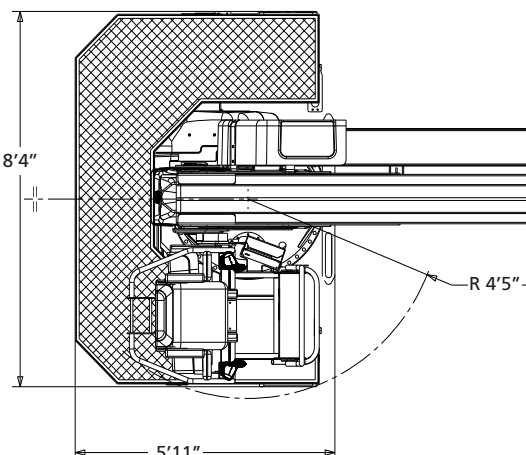


**LINKAGE** on crane articulations, maintaining a constant lifting moment and better crane performances in terms of both dynamic lifting and static capacity.

## Options



**THIRD COMMAND SEAT WITH PLATFORM**



## Fassi Internet of Cranes®

***Cranes go online thanks to Fassi's Internet of Cranes® IoC, which allows operators to be able to count on a permanently active support service through the potential of the web.***

**A complete operative change in support.**

**From a scenario where the maintenance operator carried out their work with the use of their tool bag and the compilation of reports and log books, to one where information regarding the functioning of the cranes is verified and managed remotely by a single operator via solutions offered by Fassi's "Internet of Cranes® – IoC".**

**Fassi's patented "Internet of Cranes® – IoC" system manages all of the information available from the functioning of the crane to offer the operator (or the support centre) the advantages of a machine with active intelligent logic while it is in operation. The information that the system makes remotely available via a specific software application and cloud architecture supplies the following types of data:**

- ***Telemetry and diagnostics.***
- ***Geolocation.***
- ***The crane's usage status.***
- ***Life and analysis of the machine: black box.***
- ***Statistics regarding the usage conditions of the crane.***
- ***Monitoring of residual life and predictive maintenance.***
- ***Parameters and software updates***

### ADVANTAGES

**A complete operative change in support. From a scenario where the maintenance operator has carried out their work with the use of their tool bag and the compilation of reports and log books to one where information regarding the functioning of the cranes is verified and managed remotely by a single operator via solutions offered by Fassi's "Internet of Cranes® – IoC".**



# Lifting Tomorrow



WALLBOARDS CRANES SPECIALIST



Data and descriptions are approximate and not binding  
Realized by Fassi Gru S.p.A. © 2017 - all right reserved -

Reproduction in whole or in part of texts and pictures published on this site on magnetic storage media, digital storage media etc. is prohibited

# F6005E