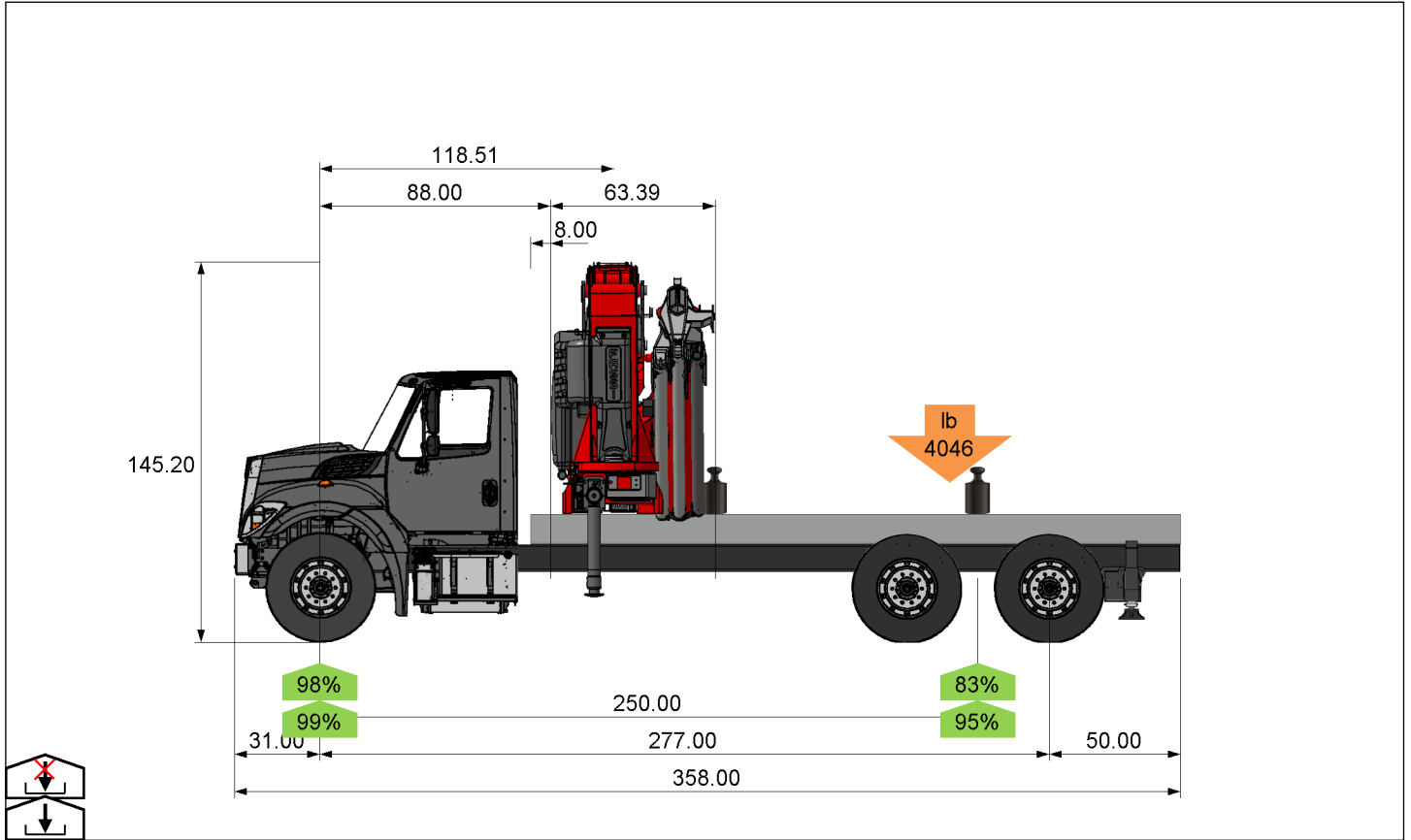


Weight calculation



Type	Front (lb)	Rear (lb)	Total (lb)	Barycentre (in)
Front axle	10,500.00	0.00	10,500.00	0.00
Rear axle	0.00	9,000.00	9,000.00	250.00
Axle - 1° asse standard	0.00	0.00	0.00	0.00
Axle - 2° asse standard	0.00	0.00	0.00	223.00
Axle - 3° asse standard	0.00	0.00	0.00	277.00
Added mass - crane plates	120.00	180.00	300.00	150.00
Added mass - trailer	0.00	5,000.00	5,000.00	250.00
Crane	8,372.77	8,669.05	17,041.82	127.17
Supplementary outriggers	-441.37	2,447.58	2,006.22	305.00
Subframe	706.37	3,091.34	3,797.71	203.50
Passengers (Drivers)	308.64	0.00	308.64	0.00
TOTAL WEIGHT UNLADEN	19,566.41	28,387.98	47,954.39	-