



“Distributor of Fassi Articulated Cranes”  
**Maintenance Schedule - SE Cranes - 90 Day**  
**F250SE.22**

Crane Model	<b>F250SE.22</b>	Serial Number		Today's Date	
End User Company		Location		Truck/Unit #	
Crane In Service Date		Warranty Period			
Service Provider		Phone		Fax:	
Address		City, State, Zip			
Inspected by (Print Name)		Inspected by (Signature)			

Note: (1) Pump Flow, Pressure Settings, and Operating Times shall be checked with the Truck Engine RPM at the Proper Operating Speed (not at idle), and with the Hydraulic Oil at a Proper Operating Temperature of 45 - 50°C / 115° - 122°F.  
 (2) Proper Pump Flow Must be Established Prior to Setting Operating Pressures.

TRUCK RPM	Dealer Specification	Actual	Adjusted
RPM Setting (Operating)			

PUMP FLOW:		lpm (gpm)	
Distributor #1	13gpm		
Distributor #2	13gpm		

Operate crane functions to stroke end and monitor pump flow to ensure flow is maintained.

PRESSURE SETTINGS: Bar (PSI)			
<b>Distributor Bank #1: Rotation, Inner Ram, Extension</b>			
Main Relief Valve	260 (3750)		
<b>Rotation</b>			
Clockwise	230 (3350)		
Counter Clockwise	230 (3350)		
<b>Inner Ram</b>			
Open (Up)	260 (3750)		
Descent (Down)	130 (1900)		
<b>Extensions</b>			
Exit	150 (2150)		
Re-Enter	260 (3750)		

<b>Distributor Bank #2: Fork Open/Close, Outer Ram, Fork Rotation</b>			
Main Relief Valve	260 (3750)		
<b>Fork Open/Close</b> (Fork not supplied by Fassi – See Manufacturer's Specs)			
Open	2900		
Close	2900		
<b>Outer Ram</b>			
Open (Up)	260 (3750)		
Descent (Down)	260 (3750)		
<b>Fork Rotation</b> (Fork not supplied by Fassi – See Manufacturer's Specs)			
Clockwise	2250		
Counter Clockwise	2250		

Fassi Specification	Actual	Adjusted
---------------------	--------	----------

PRESSURE SETTINGS: Bar (PSI)		
------------------------------	--	--

Outrigger Distributor		
Setting	150 (2150)	

LMLD Valve Setting		
Above Horizontal	270 (3900)	
Below Horizontal	270 (3900)	

AGS DATA & SETTINGS			
---------------------	--	--	--

Pump Model	KFAS-1	Serial No:	
tPA (Time Pause)	1.0 (hr)		
tCO (Time Contact)	2.0 (min)		
Pump Model	KFGS3 5W1+912	Serial No:	
tPA (Time Pause)	1.0 (hr)		
tCO (Time Contact)	3.0 (min)		
Oh (Operating Hrs)			
Fh (Fault Hrs)			

	As Received	As Released
--	-------------	-------------

AGS Grease Level	Empty – 1/4 - 1/2 - 3/4 - Full	
------------------	--------------------------------	--

LMLD Exclusion Tap	As Received	As Released
--------------------	-------------	-------------

Walvoil - LMLD		
----------------	--	--

<b>Distributor Bank #1:</b>		
EV1A Excluded	Yes - No	
Lead Wire Seal in Place	Yes - No	
<b>Distributor Bank #2:</b>		
EV1B Excluded	Yes - No	
Lead Wire Seal in Place	Yes - No	

Danfoss – LMLD or – FX000 ELMLD		
---------------------------------	--	--

LMLD Excluded	Yes - No	
Lead Wire Seal in Place	Yes - No	



“Distributor of Fassi Articulated Cranes”  
**Maintenance Schedule - SE Cranes - 90 Day**  
**F250SE.22**

Crane Model	<b>F250SE.22</b>	Serial Number		Today's Date	
-------------	------------------	---------------	--	--------------	--

<b>FORK &amp; ROTATOR</b>	Follow Dealer's/Manufacturer's Instructions/Recommendations	(Not Covered By Fassi Warranty)			
---------------------------	---	---------------------------------	--	--	--

Rotator	Check Link/Crane Connection Pin /Tighten if Loose				
	Check Rotator/Crane Connection Pin /Tighten if Loose				
	Visually Inspect for Hydraulic Oil Leaks				
	Visually Inspect Hoses for Wear/Damage				
	Check Fork/Rotator Bolts /Tighten if Loose				
Wallboard Forks	Check For Oil Leaks				
	Inspect Hoses for Wear/Damage				
	Inspect Fork Ram for Leaks				
	Inspect Fork Wear Pads/Rollers for Wear/Damage				
	Grease Fittings (8 typical)				

<b>EXTENSION BOOMS</b>	Boom Integrity, Guide Shoes, Pins				
------------------------	-----------------------------------	--	--	--	--

Extension Boom #2  Located on extension #1  NON AGS	Visually Inspect for Unusual Wear Marks				
	Visually Inspect Extension Boom Base Weld				
	Check that Upper/Lower Guide Shoes in Place				
	Check that Upper Guide Shoe Bolts are Tight				
	Check that Side Guide Shoes in Place				
Extension Boom #1  Located on outer boom  NON AGS	Visually Inspect for Unusual Wear Marks				
	Visually Inspect Extension Boom Base Weld				
	Check that Upper/Lower Guide Shoes in Place				
	Check that Upper Guide Shoe Bolts are Tight				
	Check that Side Guide Shoes in Place				
	Lubricate Extension Boom				

<b>HOSE PROTECTION DEVICES (TRAYS) ON EXTENSIONS</b>					
--	--	--	--	--	--

Hose Trays	Visually Inspect Hose Trays for Cracks				
	Visually Inspect Hose Tray Supports for Cracks				
	Visually Inspect Hose Trays for Proper Alignment/Clearance during Operation				
E-Chain	Visually Inspect for Missing/Broken Links				
	Manually Inspect for Flexibility/Easy Movement				
Hoses & Pipes	Visually Inspect for Hydraulic Leaks				
	Visually Inspect for Wear/Damage				
	Visually Inspect Hoses for Proper Lie				

<b>EXTENSION RAMS</b>	Cylinder, Rod, Piston, Seals, Hoses, Holding Valve				
-----------------------	--	--	--	--	--

	Load Test Extension Rams Holding Valve				
	Inspect For Hydraulic Leaks				
	Inspect Hoses & Pipes				
	Inspect Ram Rods for Damage				

<b>OUTER RAM</b>	Cylinder, Rod, Piston, Seals, Hoses, Holding Valve				
------------------	--	--	--	--	--

	Inspect for Hydraulic Leaks				
	Visually Inspect Hoses for Wear/Damage				
	Inspect Outer Ram Rod for Damage				
	Load Test Outer Ram Holding Valve				
Outer Ram Guard	Outer Ram Guard In Place				
	Operates Smoothly				
	Fixing Bolts are Tight				



"Distributor of Fassi Articulated Cranes"  
**Maintenance Schedule - SE Cranes - 90 Day**  
**F250SE.22**

Crane Model	<b>F250SE.22</b>	Serial Number		Today's Date	
<b>INNER BOOM</b> Boom Integrity/Pins/Bushings					
	Visually Inspect Inner Boom for Cracks				
	Visually Inspect Inner Boom Welds for Cracks				
	Check Pipe Condition on Top of Boom				
	Check Pipe Holding Clamps on Top of Boom				
Inner /Outer Boom Connection	Check Pin for Wear/Damage/Movement				
	Check Bushings for Wear/Damage/Movement				
	Check Pin Nuts & Locking Bolts are Tight				
NON AGS	Lubricate Column/Inner Boom Connection Pin				
<b>INNER RAM</b> Cylinder, Rod, Piston, Seal, Hoses					
	Inspect for Inner Ram for Leaks				
	Inspect Inner Ram Rod for Damage				
	Inspect Hydraulic Hoses/Pipes for Wear/Leaks				
	Load Test Inner Ram Holding Valve				
NON AGS	Lubricate Inner Ram/Column Fitting (1)				
NON AGS	Lubricate Inner Ram/Inner Boom Fitting (1)				
<b>COLUMN</b> Column Integrity/Pins/Bushings					
	Visually Inspect Column for Cracks				
	Visually Inspect Welds on Column for Cracks				
Column/Inner Boom Connection	Check Pin for Wear/Damage/Movement				
	Check Bushings for Wear/Damage/Movement				
	Check Pin Nuts & Locking Bolts are Tight				
NON AGS	Lubricate Column/Inner Boom Connection Pin				
<b>ROTATION CYLINDERS</b> Cylinders, Pistons, Seals					
	Inspect Rotation Cylinders for Leaks				
	Inspect Piping and Hosing for Leaks				
<b>CRANE BASE</b> Base, Base Bushings, Rack, Compensator					
Base/Outrigger Beam	Visually Inspect Welds on Base/Outrigger Beam for Cracks				
Base	Visually Inspect Cast Steel Base for Cracks				
Upper Base Bushing (6 mm, 0.240")	Determine Upper Bushing Wear via dial indicator				
	If wear is greater than 3.0 mm / 0.125" remove and replace.				
NON AGS	Lubricate (2 fittings)				
Lower Bushing (2.5 mm, 0.100")	Determine Lower Bushing Wear via dial indicator				
	If wear is greater than 0.8 mm / 1/32" remove and replace.				
NON AGS	Lubricate (2 fittings)				
Rack NON AGS	Lubricate (2 fittings)				
Compensator NON AGS	Lubricate (1 fitting) Lubricate (1 fitting)				
Hosing through Base	Check Hydraulic Hoses for Wear/Leaks				
	Check Hydraulic Hose Swivels for Movement				
<b>HYDRAULIC OIL TANK</b> Inspect for Hydraulic Oil Leaks					
	Inspect for Hydraulic Oil Leaks				
	Check Tank Straps/Tighten if Loose				
Oil Return Filters (2)	Clean/Replace (50 micron)			Note: Clean Once/ then Replace	
	Clean/Replace (50 micron)			Note: Clean Once/ then Replace	
Fluid Level	Check Hydraulic Fluid Level (Cold) with Crane in Stowed Position / Fill as Required				
	Change oil annually unless semi annual testing is done with results supplied				



"Distributor of Fassi Articulated Cranes"  
**Maintenance Schedule - SE Cranes - 90 Day**  
**F250SE.22**

Crane Model	<b>F250SE.22</b>	Serial Number		Today's Date	
-------------	------------------	---------------	--	--------------	--

HYDRAULIC OIL COOLER					
	Oil Cooler Starts Operating at Correct Temperature (95°F, 104°F, or 135°F - Sensor Dependent)				
	Check Hose Connections for Leaks				
	Check Mounting Bolts/Tighten if Loose				

CRANE/OUTRIGGER DEVIATOR					
	Inspect for Hydraulic Oil Leaks				
	Inspect for Easy Movement with Oil at Operating Temperature				
	Check Linkage and Pipes				

OUTRIGGERS (STABILIZERS)      Outrigger Extension Beams and Rams					
Outrigger Safety Locks (2)	Check Functional Operation				
Extension Rams & Beams	Guide Shoes in Place				
	Inspect Extension Beam Hoses for Leaks/Wear				
NON AGS	Grease Extension Beams				
Stabilizer Rams	Visually Inspect for Bent Rod/Other Rod Damage				
	Visually Inspect Ram for Leaks				
	Visually Inspect Hosing for Leaks/Wear				

OIL FILTERS – PRESSURE					
Oil Filters (Pressure) - 1	Check for Leaks				
	Indicator in Place				
	Indicator Color (Green/Red)				
	Replace Filter if needed				
Oil Filters (Pressure) - 2	Check for Leaks				
	Indicator in Place				
	Indicator Color (Green/Red)				
	Replace Filter if needed				

SUBFRAME/RISER					
Structure & Fixing Rods	Check Fixing Rod Bolt Tightness/Tighten if Loose				
	Check Shear Plates Bolt Tightness/Tighten if Loose				

MOUNTING BOLTS:		Fassi Specification	Actual	Adjusted
		Nm (ft lbs)		
Check Tightness		120 (885)		

PUMP / PTO      Follow Dealer's/Manufacturer's Instructions/Recommendations      (Not Covered By Fassi Warranty)					
	Check for Leaks				
	Check Splines and Lubricate				



“Distributor of Fassi Articulated Cranes”  
**Maintenance Schedule - SE Cranes - 90 Day**  
**F250SE.22**

Crane Model	<b>F250SE.22</b>	Serial Number		Today's Date	
-------------	------------------	---------------	--	--------------	--

**OUTRIGGER DISTRIBUTORS**

<b>Drivers Side Outrigger Distributor</b>					
	Visually Inspect for Hydraulic Oil Leaks				
	Visually Inspect Hoses for Wear				
Extension Operating Lever	Check for Smooth Operation				
	Lever Returns to Center				
Stabilizer Ram Operating Lever	Check for Smooth Operation				
	Lever Returns to Center				
<b>Passenger Side Outrigger Distributor</b>					
	Visually Inspect for Hydraulic Oil Leaks				
	Visually Inspect Hoses for Wear				
Extension Operating Lever	Check for Smooth Operation				
	Lever Returns to Center				
Stabilizer Ram Operating Lever	Check for Smooth Operation				
	Lever Returns to Center				

**PLATFORM & LADDER ASSEMBLY**

	Inspect Ladder Step Treads				
	Inspect Assembly Welds for Cracks				
	Check Assembly Bolts / Tighten if Loose				
	Check Cross Rod Bolts / Tighten if Loose				

**CRANE DISTRIBUTORS**

**CRANE DISTRIBUTOR 1**

General	Inspect for Hydraulic Oil Leaks				
	Fixing Screws Tight				
Rotation Lever	Smooth Operation				
	Return to Center				
Inner Boom Lever	Smooth Operation				
	Return to Center				
Extension Foot Pedal	Check Foot Pedal Linkage for Proper Stroke				
	Smooth Operation				
	Return to Center				
NON AGS	Lubricate (1 grease fitting)				

**CRANE DISTRIBUTOR 2**

General	Inspect for Hydraulic Oil Leaks				
	Fixing Screws Tight				
Fork (Open/Close) Foot Pedal	Check Foot Pedal Linkage for Proper Stroke				
	Smooth Operation				
	Return to Center				
NON AGS	Lubricate (1 grease fitting)				
Outer Boom Lever	Smooth Operation				
	Return to Center				
Fork Rotator Lever	Smooth Operation				
	Return to Center				

**LMLD (LIFTING MOMENT LIMITING DEVICE) Valves, Pressure Switches, Electro-Valves**

	Check Overload System for Proper Operation				
	Check LMLD Pressure				
	Check for Oil Leaks				
	Security Lead Seal in Place				



“Distributor of Fassi Articulated Cranes”  
**Maintenance Schedule - SE Cranes - 90 Day**  
**F250SE.22**

Crane Model	<b>F250SE.22</b>	Serial Number		Today's Date	
-------------	------------------	---------------	--	--------------	--

AGS SYSTEM Grease Specification (Nils Grease - Nilex NLGI#1 or Lubriplate “730” NLGI#1)					
System Types	Standard Base System (7 fittings)				
	Extended System w/o Foot Pedals (13 fittings)				
	Extended System w/ Foot Pedals (15 fittings)				
Check Pump Operation	When Powered:				
	Standard Horn Sounds				
	Auxiliary Horn Sounds/Strobe Light Lights				
	Light Illuminates on Junction Box				
	Light Illuminates on Vogel Pump				
Manually Cycle the Pump	Operate DK Switch on Junction Box				
	Operate DK Button on Pump Display				
Cycle Switch Operation	System Faults (Alarms) after 3 Cycles with CS Cable DISCONNECTED.				
Grease Delivery Hoses	Check Hose Type (80 bar / 800 bar)				
	Check Grease Hoses for leaks				
	Check Grease Hoses connections				
	Check for plugged Grease Hoses				
Grease Reservoir	Fill with Approved Grease				

RADIO REMOTE CONTROL IF EQUIPED					
Radio/Manual Switch	Check Functional Operation				
Rotation Lever / Joystick	Check Radio/Lever Stroke & Movement				
Inner Boom Lever / Joystick	Check Radio/Lever Stroke & Movement				
Extension Lever / Joystick	Check Radio/Lever Stroke & Movement				
Fork (Open/Close) Lever / Joystick	Check Radio/Lever Stroke & Movement				
Outer Boom Lever / Joystick	Check Radio/Lever Stroke & Movement				
Fork Rotator Lever / Joystick	Check Radio/Lever Stroke & Movement				
Emergency Stop	Check Functional Operation				

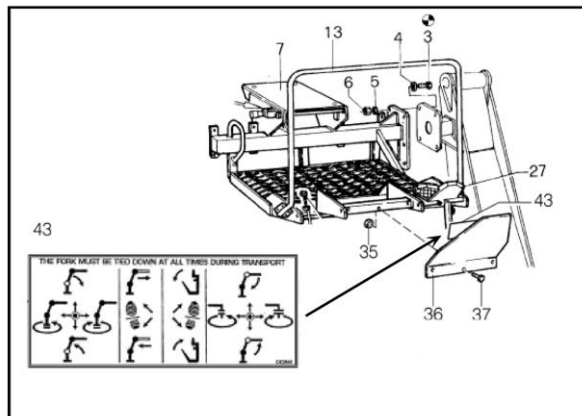
OPERATOR TOP SEAT (IF EQUIPED)					
	Inspect Top Seat for operation and for damage				
	Confirm that Seat cannot recline backwards past safety stop – if so repair or replace Seat				



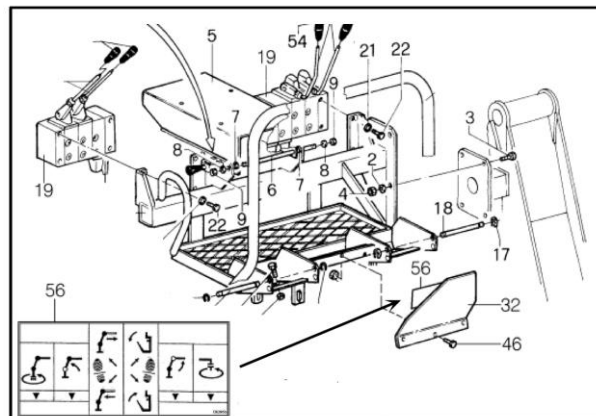
"Distributor of Fassi Articulated Cranes"  
**Maintenance Schedule - SE Cranes - 90 Day**  
**F250SE.22**

Crane Model	<b>F250SE.22</b>	Serial Number		Today's Date	
-------------	------------------	---------------	--	--------------	--

DECALS		Decals are In Place And Legible			
DE 3907	Capacity Plate (Lifting Chart) F250SE.22				
DE 2676	Instruction Plate and Safety Norms				
DE 2327	Warning Plate to Stabilize the Vehicle Before Using the Crane				
DE 2600	Instruction Plates to Stabilize the Vehicle				
DE 2601	Instruction Plates to Stabilize the Vehicle				
DE 2498	Warning Plates to Make Sure that No One Is In or Transits In Close Proximity to the Outriggers.				
DE 2497	Warning Plates to Make Sure that No One Is or Transits In Close Proximity of the Outriggers.				
DE 2868	Crane Controls Plate - Walveoil (Joystick)				
DE 3953	Crane Controls Plate - Danfoss (Lever)				
DE 1067	Do Not Walk or Stay Under a Suspended Load & for Unauthorized Persons to be within the Working Area.				
DE 2100	Danger Plate for Crushing of Lower Limbs.				
DE 1686	Do Not Walk or Stop Under A Suspended Load.				
DE 1683	Do Not Operate In Proximity of Electric High-Tension Lines.				
DE 2361	Do Not Operate In Proximity of Electric High-Tension Lines.				
DE 1679	Do Not Step On.				
DE 1680	Do Not Use Water to Extinguish Fire.				
DE 1681	Greasing Points With Brush.				
DE 1682	Greasing Points At Pressure.				
DE 1574	Do Not Weld the Fixing Rods.				
R5763	DANGER: Loading Truck Payload Above This Decal Can Be Dangerous (2)				



DE 2868- Crane Controls Plate - Walveoil (Joystick)



DE 3953 - Crane Controls Plate - Danfoss (Lever)



"Distributor of Fassi Articulated Cranes"  
**Maintenance Schedule - SE Cranes - 90 Day**  
**F250SE.22**

Crane Model	<b>F250SE.22</b>	Serial Number		Today's Date	
-------------	------------------	---------------	--	--------------	--

**DECAL LOCATIONS**

<b>FASCI</b>		ADE22A0
TARG TARG001 PLATES FOR F250SE THROUGH F360SE		
1	DE F250SE	PLATE F250S
1	DE F280SE	PLATE F280S
1	DE F330SE	PLATE F330SE
1	DE F360SE	PLATE F360SE
2	DE 619	PLATE "FASCI"
2	DE 621	PLATE "FASCI"
3	DE 1682	GREASING PLATE "Greasing Points at Pressure"
4	DE 4779	SHEAR WARNING PLATE
5	DE 3883	LOAD CHART "F280SE.22"
5	DE 4230	LOAD CHART "F330SE.24"
5	DE 4273	LOAD CHART "F250SE.21"
5	DE 5478	LOAD CHART "F360SE.24"
6	DE 1679	FORBIDDEN PLATE "Do not walk or stay under a suspended load and for unauthorized persons to be within the working area"
7	DE 1681	GREASING PLATE "Greasing points with brush"
8	DE 2361	DANGER PLATE "Do not operate in proximity of electric high tension lines"
9	DE 1679	FORBIDDEN PLATE "Do not walk on."
10	DE 3227	WARNING PLATE "Extend outriggers to stabilize truck"
11	DE 2676	CRANE INSTRUCTION PLATE
12	DE 1574	FORBIDDEN PLATE "Do not weld the fixing rods"
13	DE 815	FORBIDDEN PLATE
14	DE 1680	FORBIDDEN PLATE "Do not use water to extinguish fire"
15	DE 1686	DANGER PLATE

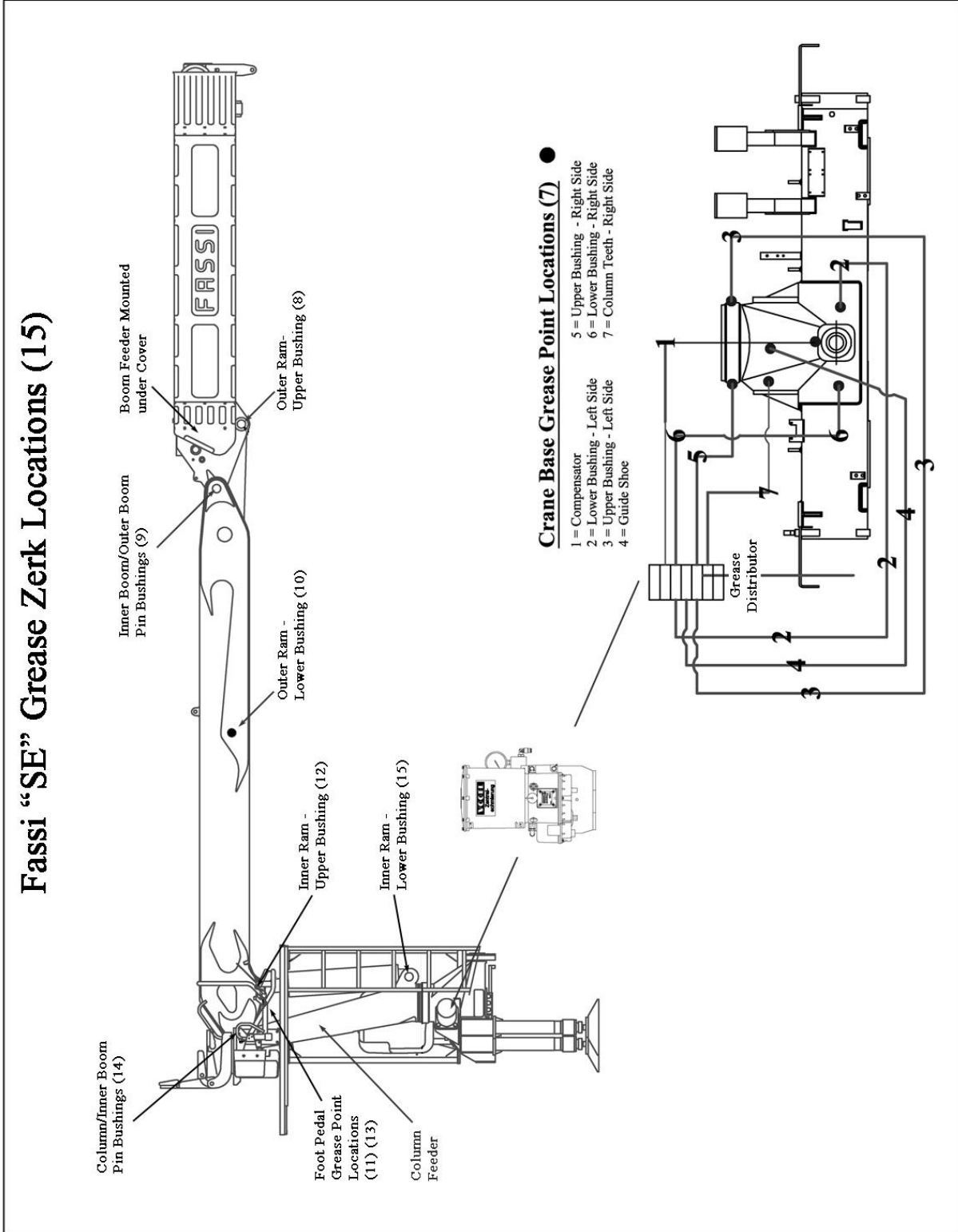




"Distributor of Fassi Articulated Cranes"  
**Maintenance Schedule - SE Cranes - 90 Day**  
**F250SE.22**

Crane Model	<b>F250SE.22</b>	Serial Number		Today's Date	
-------------	------------------	---------------	--	--------------	--

**GREASE ZERK LOCATIONS**

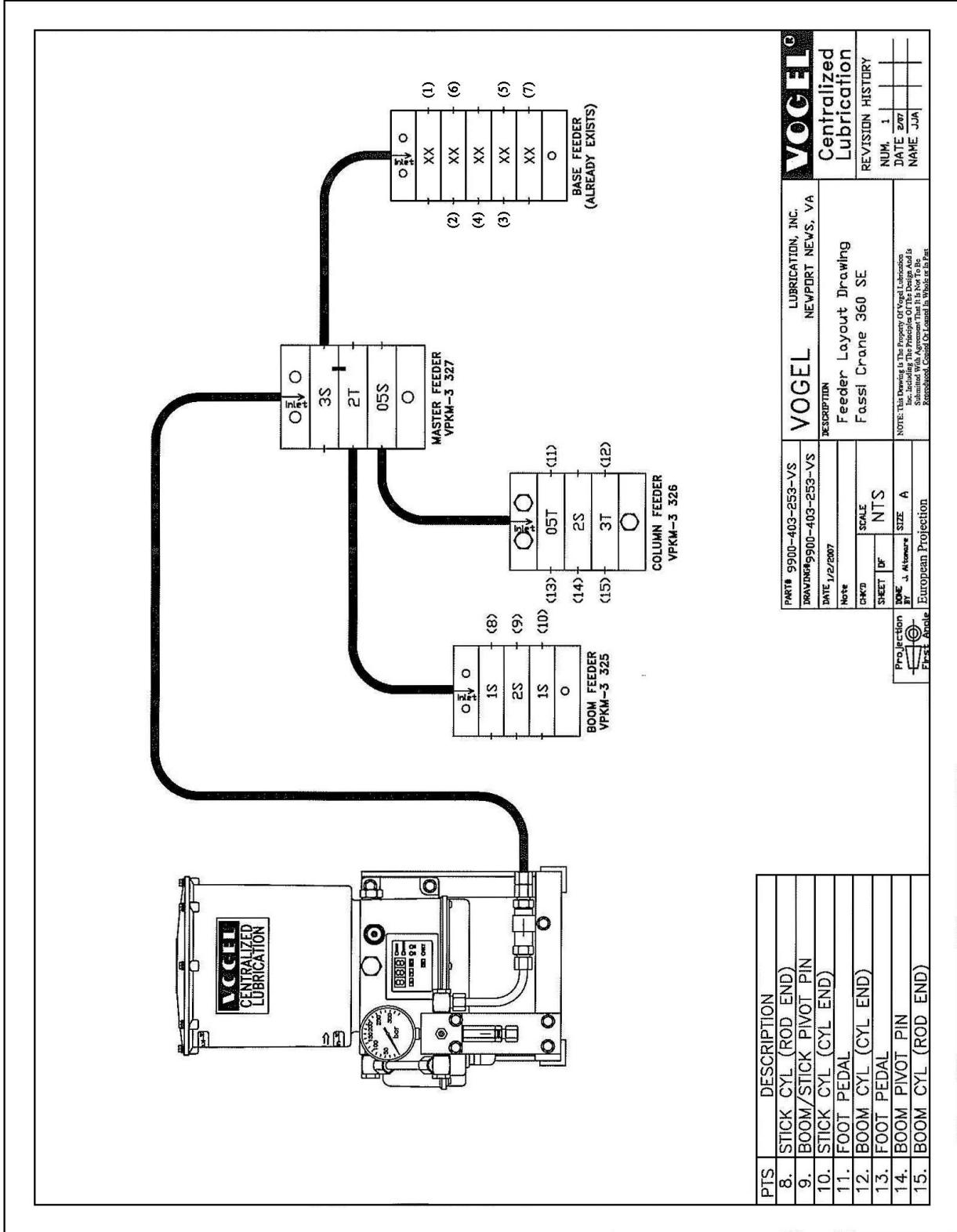




"Distributor of Fassi Articulated Cranes"  
**Maintenance Schedule - SE Cranes - 90 Day**  
**F250SE.22**

Crane Model	<b>F250SE.22</b>	Serial Number		Today's Date	
-------------	------------------	---------------	--	--------------	--

**VOGEL GREASE ZERK LOCATIONS**



<b>VOGEL</b> LUBRICATION, INC. NEWPORT NEWS, VA	
Centralized Lubrication	
Feeder Layout Drawing	
Fassi Crane 360 SE	
REVISION HISTORY	NUM. 1
DATE 2/27	NAME JJA
NOTE: This Drawing is the Property of Vogel Lubrication Inc. Including the Principles of This Design and is Submitted with Agreement that it is Not To Be Reproduced, Copied, or Used in Any Manner Without the Written Consent of the Manufacturer.	