

**New. Versatile. Innovative.**

THE NEW FASSI F375SE.14

**A 7-STORY CRANE  
AT A 6-STORY WEIGHT**

**Maximum lift:** 7,900+ lbs.

**Vertical reach:** 84'

**Horizontal reach:** 72'4"

**TRUCK DATA**

<b>SBA WB:</b> 275"-295"	<b>13.5k tag or pusher</b>
<b>SFA WB:</b> 290" – 300"	(depending on state laws)
<b>20k front axle</b>	<b>Full double frame</b>
<b>46k rear tandems</b>	(RBM 3–3.2 million per rail)

**A BETTER, MORE DYNAMIC REACH...**

One extension on the main boom and 4 extensions on the outer boom enables operators to extend the boom vertically 38' before knuckling over: a full **10 feet longer** than the industry standard.

**...EVEN STRONGER THAN BEFORE**

Featuring a 10-sided boom, increasing strength and stability compared to the traditional diamond-shaped structure.

Stronger steel in the boom structure allows for a lighter overall design without affecting the maximum lift.



**Other optional safety and control features include:**

- Top seat with digital CANbus joysticks
- Digital radio remote
- Zone controls to prevent the boom from moving beyond zones fully supported by outriggers
- LED safety features on outriggers



See reverse for load charts

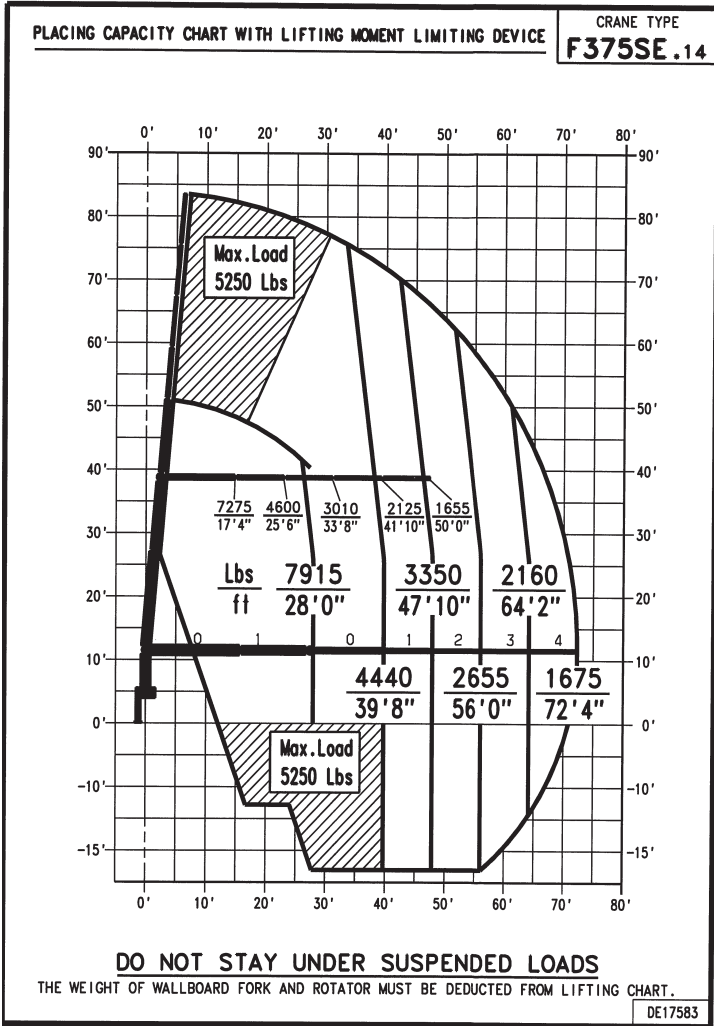
**Contact your Fascaan  
dealer for details or visit  
[www.fascaan.com](http://www.fascaan.com)**

**FASCAN**  
INTERNATIONAL, INC.



(800) 632-7226

# THE NEW FASSI F375SE.14



## TECHNICAL DATA F375SE.14

Lifting capacity	271,168 lbs.ft
Standard reach	72'4" ft
Hydraulic extension	44'5" ft
Rotation arc	430°
Rotation torque	33,928 lbs.ft
Working pressure	4714 psi
Pump capacity	21-21 gal/min
Oil tank capacity	66 gal
Outriggers spread crane	25'7" ft
Supplementary outriggers	91"
Degree of boom elevator	82,5°
Weight (Dry)	10,692 lbs

**CERTIFIED  
DYNAMIC  
PERFORMANCE**

Dynamic load diagrams calculated, tested and certified to lift the loads at the declared reaches unless indicated

