

New. Versatile. Innovative.

THE NEW FASSI F375SE.13

A 6-STORY CRANE WITH AMAZING CAPABILITIES



Maximum lift: 8,300+ lbs.

Vertical reach: 75'

Horizontal reach: 64' 2"

TRUCK DATA

SBA WB: 275"-295"

SFA WB: 290" – 300"

20k front axle

46k rear tandems

13.5k tag or pusher

(depending on state laws)

Full double frame

(RBM 3–3.2 million per rail)

A BETTER, MORE DYNAMIC REACH...

One extension on the main boom and 3 extensions on the outer boom enables operators to extend the boom vertically 38' before knuckling over: a full **10 feet longer** than the industry standard.

...EVEN STRONGER THAN BEFORE

Featuring a 10-sided boom, increasing strength and stability compared to the traditional diamond-shaped structure.

Stronger steel in the boom structure allows for a lighter overall design without affecting the maximum lift.

Other optional safety and control features include:

- Top seat with digital CANbus joysticks
- Digital radio remote
- Zone controls to prevent the boom from moving beyond zones fully supported by outriggers
- LED safety features on outriggers

**Contact your Fascaan
dealer for details or visit
www.fascaan.com**

FASCAN
INTERNATIONAL, INC.

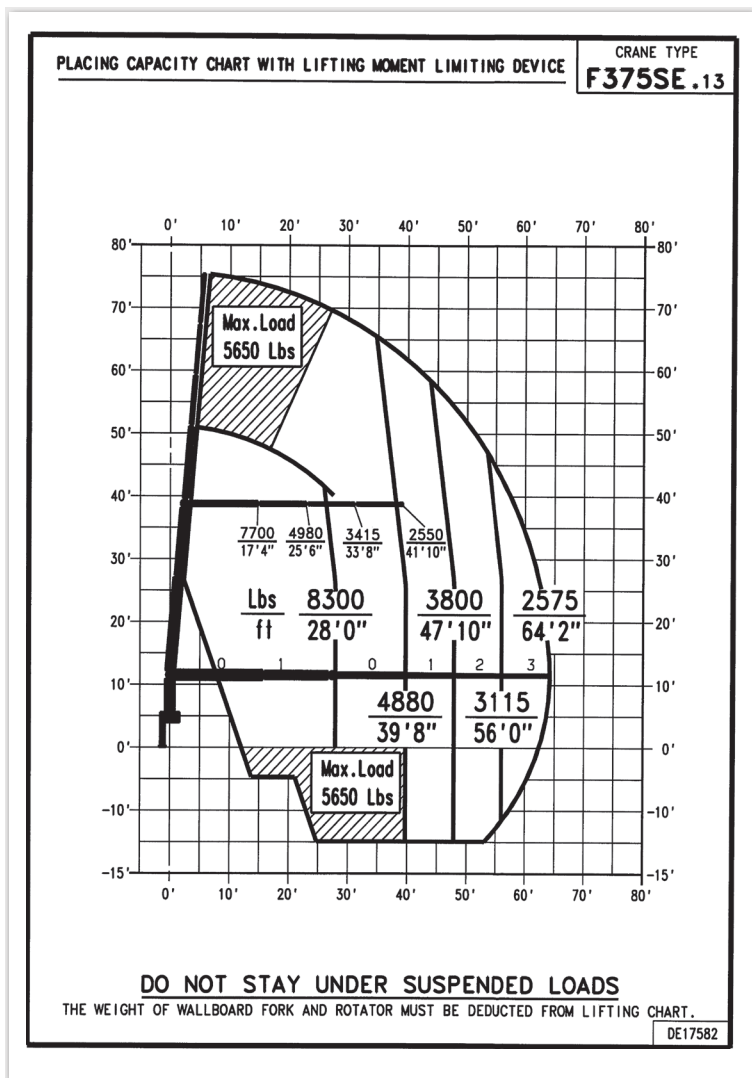


(800) 632-7226



See reverse for load charts

THE NEW FASSI F375SE.13



TECHNICAL DATA	F375SE.13
Lifting capacity	232641 lbs.ft
Standard reach	64'2" ft
Hydraulic extension	36'3" ft
Rotation arc	430°
Rotation torque	33928 lbs.ft
Working pressure	4714 psi
Pump capacity	21-21 gal/min
Oil tank capacity	66 gal
Outriggers spread crane	25'7" ft
Supplementary outriggers	91"
Degree of boom elevator	82,5°
Weight (Dry)	10141 lbs

CERTIFIED DYNAMIC PERFORMANCE Dynamic load diagrams calculated, tested and certified to lift the loads at the declared reaches unless indicated

