

lbs/ft

active

e-active

dynamic

e-dynamic



**CERTIFIED
DYNAMIC
PERFORMANCE**

LARGE RANGE: F245A.0 → F455RA.2 SERIES

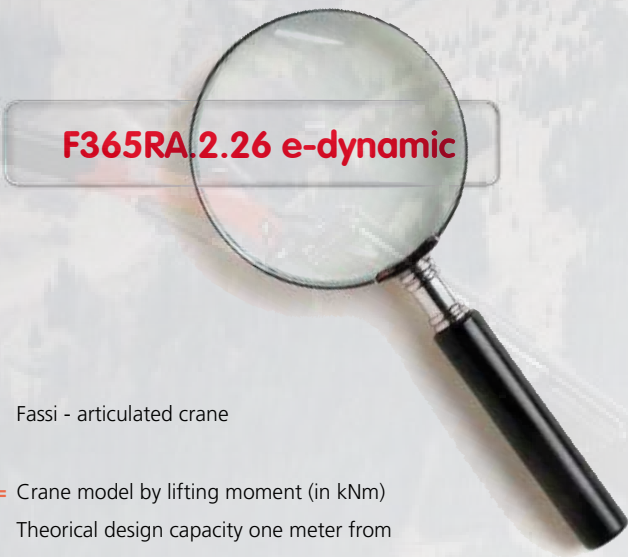
FASSI

www.fassi.com

MODEL	PAGE
F245A.0 active - F245A.0 e-active	6
F245A.0 active "L serie" - F245A.0 e-active "L serie"	9
F245A.2 e-dynamic	10
F245A.2 e-dynamic "L serie"	13
F275A.0 e-active	14
F275A.0 e-active "L serie"	17
F275A.2 e-dynamic	18
F275A.2 e-dynamic "L serie"	21
F295A.2 e-dynamic	22
F295A.2 e-dynamic "L serie"	25
F295RA.2 e-dynamc	26
F295RA.2 e-dynamic "L serie"	29
F315A.2 e-dynamic	30
F315A.2 e-dynamic "L serie"	33
F315RA.2 e-dynamic	34
F315RA.2 e-dynamic "L serie"	37
F335A.2 e-dynamic	38
F335A.2 e-dynamic "L serie"	41
F335RA.2 e-dynamic	42
F335RA.2 e-dynamic "L serie"	45
F365A.2 e-dynamic	46
F365A.2 e-dynamic "L serie"	49

MODEL	PAGE
F365RA.2 e-dynamic	50
F365RA.2 e-dynamic “L serie”	53
F385A.2 e-dynamic	54
F385A.2 e-dynamic “L serie”	57
F385RA.2 e-dynamic	58
F385RA.2 e-dynamic “L serie”	61
F415A.2 e-dynamic	62
F415A.2 e-dynamic “L serie”	65
F415RA.2 e-dynamic	66
F415RA.2 e-dynamic “L serie”	69
F425A.2 e-dynamic	70
F425A.2 e-dynamic “L serie”	73
F425RA.2 e-dynamic	74
F425RA.2 e-dynamic “L serie”	77
F455A.2 e-dynamic	78
F455A.2 e-dynamic “L serie”	81
F455RA.2 e-dynamic	82
F455RA.2 e-dynamic “L serie”	85

CRANE MODELS IDENTIFICATION NAME



F365RA.2.26 e-dynamic

F = Fassi - articulated crane

365 = Crane model by lifting moment (in kNm)
Theoretical design capacity one meter from center of column. Example "365" kNm (264005 lbs.ft)

R = Continuous rotation (reported only on continuous rotation crane)

A = Fassi series. **Single, double or triple letter designation (A,B,C,D,E,G-Z)**. Example: series "A" (1st generation of the same lifting class). The eventual second or third letter identify a special range (ex.:C, F, FM, AS, SE, XS)

2 = Number of linkage: 0-Without linkage; 1-One linkage; 2-Double linkage (on both articulations)

26 = Number of articulations and hydraulic extension booms of the outer boom
Example: "2" articulations "6" extension Boom

e-dynamic = Identification of the crane set-up:
active; e-active; dynamic; e-dynamic; he-dynamic

SET UP DESCRIPTION

active

Related to cranes identified by "0", without linkages, dual side manual ground controls, complete with EC safety devices.

e-active

Related to cranes identified by "0", without linkages, one manual ground control, RCH/RCS radio remote control, complete with EC safety devices.

dynamic

Related to cranes identified by "1" and "2", with linkages, dual side manual ground controls, complete with EC safety devices.

e-dynamic

Related to cranes identified by "1" and "2", with linkages, one manual ground control or manual emergency one located on the column side, RCH/RCS radio remote control, eventual XP execution (where available), complete with EC safety devices.

he-dynamic

Related to cranes range from F510RA.2 to F1950RA.2, with linkage, continuous rotation, RCH/RCS radio remote control, outriggers controlled by radio remote control, eventual XP execution (where available), complete with EC safety devices.



STANDARD

S800
Multifunction
Distributor Bank

control

FX500
Fassi Electronic
Control

control

FSC
Fassi Stability
Control

control

CPM
Crane Position
Monitoring

control

MPES
Multi Power
Extension System

performance

UHSS
Ultra High
Strength Steel

strength

FWD
Fewer Welds
Design

strength

CQ
Cast Quality

strength

RPS
Rack and Pinion
System

strength

STANDARD

D850
Digital Multifunction
Distributor Bank

control

RCH/RCS
Radio Remote
Control

control

FX500
Fassi Electronic
Control

control

FSC
Fassi Stability
Control

control

CPM
Crane Position
Monitoring

control

FS
Flow Sharing

performance

MPES
Multi Power
Extension System

performance

UHSS
Ultra High
Strength Steel

strength

FWD
Fewer Welds
Design

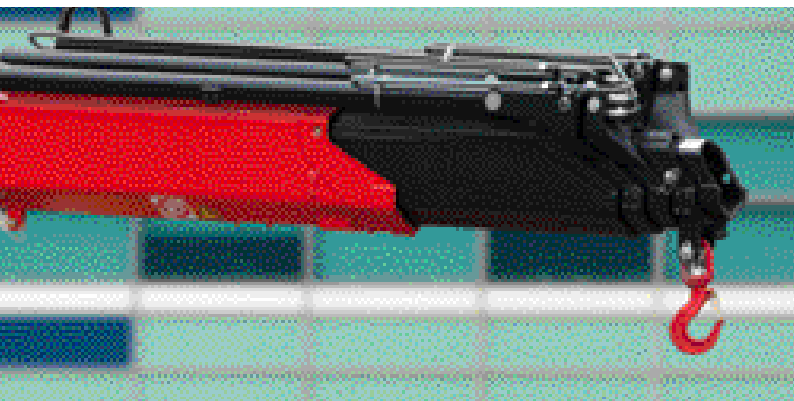
strength

CQ
Cast Quality

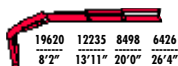
strength

RPS
Rack and Pinion
System

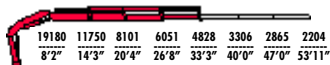
strength



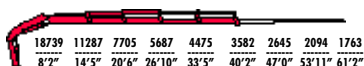
F245A.0.22



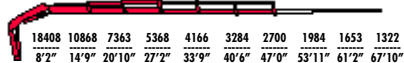
F245A.0.23



F245A.0.24



F245A.0.25



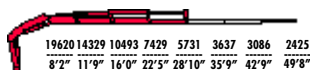
F245A.0.26



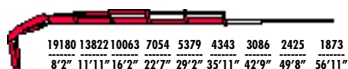
F245A.0.22	170337	27'6"	12'5"	420	27371	4430	12-17	50	5291	8'3"	3'5"	7'8"
F245A.0.23	168818	34'3"	19'0"	420	27371	4430	12-17	50	5643	8'3"	3'5"	7'8"
F245A.0.24	162959	41'2"	25'9"	420	27371	4430	12-17	50	5996	8'3"	3'5"	7'8"
F245A.0.25	160717	48'2"	32'5"	420	27371	4430	12-17	50	6305	8'3"	3'5"	7'8"
F245A.0.26	159994	55'1"	39'0"	420	27371	4430	12-17	50	6547	8'4"	3'5"	7'8"



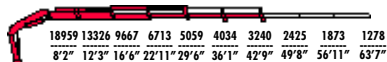
F245AC.0.23



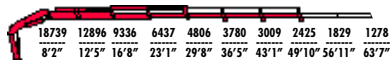
F245AC.0.24



F245AC.0.25

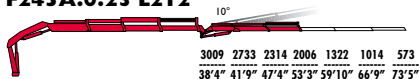


F245AC.0.26

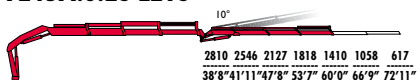


F245AC.0.23	169614	30'0"	17'2"	420	27371	4430	12-17	50	5533	8'3"	3'5"	7'8"
F245AC.0.24	165129	36'10"	23'11"	420	27371	4430	12-17	50	5886	8'3"	3'5"	7'8"
F245AC.0.25	163683	43'11"	30'6"	420	27371	4430	12-17	50	6194	8'3"	3'5"	7'8"
F245AC.0.26	159126	50'10"	37'2"	420	27371	4430	12-17	50	6437	8'4"	3'5"	7'8"

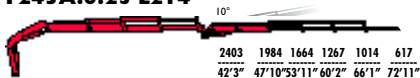
F245A.0.23 L212



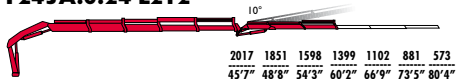
F245A.0.23 L213



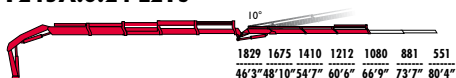
F245A.0.23 L214



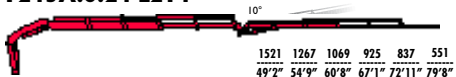
F245A.0.24 L212



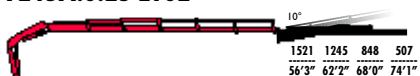
F245A.0.24 L213



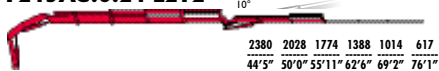
F245A.0.24 L214



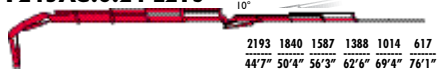
F245A.0.25 L102



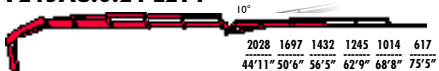
F245AC.0.24 L212



F245AC.0.24 L213



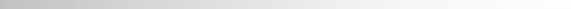
F245AC.0.24 L214



F245A.0.23 L212	168818	54°5"	30°6"	420	27371	4430	12-17	50	7054	8°3"	4°0"	7°8"
F245A.0.23 L213	168818	61°0"	36°10"	420	27371	4430	12-17	50	7231	8°3"	4°0"	7°8"
F245A.0.23 L214	168818	67°3"	42°9"	420	27371	4430	12-17	50	7385	8°3"	4°0"	7°8"
F245A.0.24 L212	162959	61°4"	37°2"	420	27371	4430	12-17	50	7407	8°3"	4°0"	7°8"
F245A.0.24 L213	162959	67°10"	43°7"	420	27371	4430	12-17	50	7583	8°3"	4°0"	7°8"
F245A.0.24 L214	162959	74°1"	49°6"	420	27371	4430	12-17	50	7738	8°3"	4°0"	7°8"
F245A.0.25 L102	160717	69°2"	44°3"	420	27371	4430	12-17	50	7330	8°3"	4°0"	7°8"
F245AC.0.24 L212	165129	57°1"	35°5"	420	27371	4430	12-17	50	7297	8°3"	4°0"	7°8"
F245AC.0.24 L213	165129	63°7"	41°9"	420	27371	4430	12-17	50	7473	8°3"	4°0"	7°8"
F245AC.0.24 L214	165129	69°10"	47°8"	420	27371	4430	12-17	50	7627	8°3"	4°0"	7°8"



STANDARD



ADC

Automatic Dynamic Control

control

D850

Digital Multifunction Distributor Bank

control

RCH/RCS

Radio Remote Control

control

FX800

Faxi Electronic Control

control

FSC

Faxi Stability Control

control

CPM

Crane Position Monitoring

control

FS

Flow Sharing

performance

XF

Extra Fast

performance

MPES

Multi Power Extension System

performance

PROLINK

Progressive Link

performance

UHSS

Ultra High Strength Steel

strength

FWD

Fewer Welds Design

strength

CQ

Cast Quality

strength

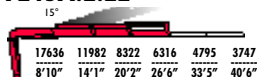
RPS

Rack and Pinion System

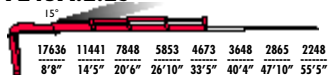
strength



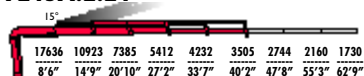
F245A.2.22



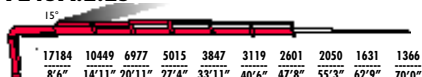
F245A.2.23



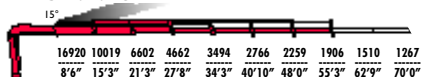
F245A.2.24



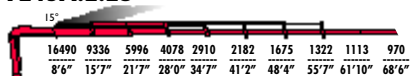
F245A.2.25



F245A.2.26



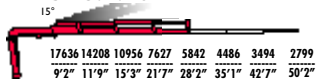
F245A.2.28



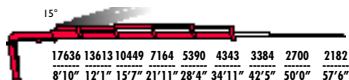
F245A.2.22	168818	26'8"	12'5"	420	27371	4430	12-17	50	6062	8'3"	3'5"	7'10"
F245A.2.23	165129	33'5"	19'0"	420	27371	4430	12-17	50	6536	8'3"	3'7"	7'10"
F245A.2.24	161441	40'4"	25'5"	420	27371	4430	12-17	50	6999	8'3"	3'7"	7'10"
F245A.2.25	156305	47'8"	32'9"	420	27371	4430	12-17	50	7385	8'3"	3'7"	7'10"
F245A.2.26	152616	55'3"	40'0"	420	27371	4430	12-17	50	7749	8'3"	3'7"	7'10"
F245A.2.28	145239	68'6"	52'11"	420	27371	4430	12-17	50	8322	8'4"	3'9"	7'10"



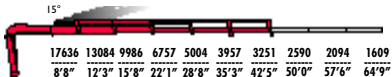
F245AC.2.23



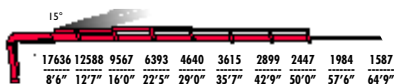
F245AC.2.24



F245AC.2.25

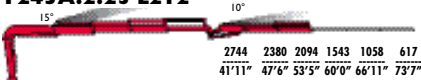


F245AC.2.26

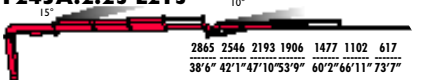


F245AC.2.23	168095	28'2"	16'4"	420	27371	4430	12-17	50	6349	8'3"	3'7"	7'10"
F245AC.2.24	165925	34'11"	22'9"	420	27371	4430	12-17	50	6812	8'3"	3'7"	7'10"
F245AC.2.25	160717	42'5"	30'2"	420	27371	4430	12-17	50	7198	8'3"	3'7"	7'10"
F245AC.2.26	159271	50'0"	37'4"	420	27371	4430	12-17	50	7561	8'3"	3'7"	7'10"

F245A.2.23 L212



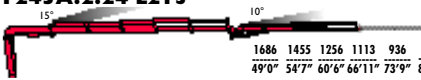
F245A.2.23 L213



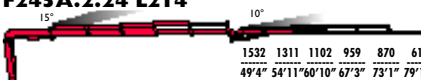
F245A.2.24 L212



F245A.2.24 L213



F245A.2.24 L214



F245A.2.25 L212



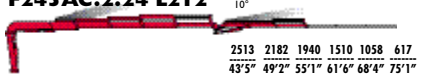
F245A.2.25 L213



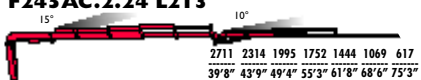
F245A.2.26 L102



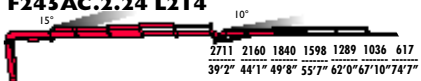
F245AC.2.24 L212



F245AC.2.24 L213



F245AC.2.24 L214



F245A.2.23 L212	165129	53'7"	30'6"	420	27371	4430	12-17	50	7716	8'3"	4'2"	8'5"
F245A.2.23 L213	165129	60'2"	36'10"	420	27371	4430	12-17	50	7903	8'3"	4'2"	8'5"
F245A.2.24 L212	161441	60'4"	37'0"	420	27371	4430	12-17	50	8090	8'3"	4'2"	8'7"
F245A.2.24 L213	161441	66'11"	43'5"	420	27371	4430	12-17	50	8267	8'3"	4'2"	8'7"
F245A.2.24 L214	161441	73'1"	49'4"	420	27371	4430	12-17	50	8421	8'3"	4'2"	8'7"
F245A.2.25 L212	156305	67'10"	44'3"	420	27371	4430	12-17	50	8487	8'3"	4'2"	8'8"
F245A.2.25 L213	156305	74'5"	50'8"	420	27371	4430	12-17	50	8675	8'3"	4'2"	8'8"
F245A.2.26 L102	152616	76'2"	51'6"	420	27371	4430	12-17	50	8454	8'4"	4'2"	8'5"
F245AC.2.24 L212	165925	55'1"	34'5"	420	27371	4430	12-17	50	7914	8'3"	4'2"	8'7"
F245AC.2.24 L213	165925	61'8"	40'10"	420	27371	4430	12-17	50	8090	8'3"	4'2"	8'7"
F245AC.2.24 L214	165925	67'10"	40'0"	420	27371	4430	12-17	50	8245	8'3"	4'2"	8'7"



STANDARD

D850

Digital Multifunction
Distributor Bank

control

RCH/RCS

Radio Remote
Control

control

FX500

Fassi Electronic
Control

control

FSC

Fassi Stability
Control

control

CPM

Crane Position
Monitoring

control

FS

Flow Sharing

performance

MPES

Multi Power
Extension System

performance

XP

Extra Power

performance

UHSS

Ultra High
Strength Steel

strength

FWD

Fewer Welds
Design

strength

CQ

Cast Quality

strength

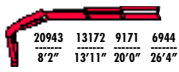
RPS

Rack and Pinion
System

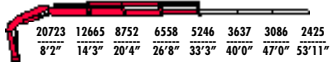
strength



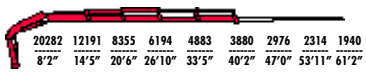
F275A.0.22



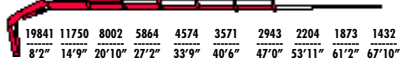
F275A.0.23



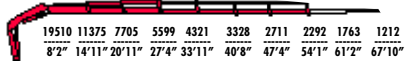
F275A.0.24



F275A.0.25



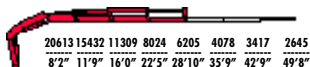
F275A.0.26



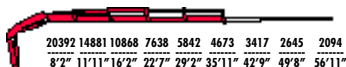
F275A.0.22	183574	27'6"	12'5"	420	27371	4570	12-17	50	5291	8'3"	3'5"	7'8"
F275A.0.23	181404	34'3"	19'0"	420	27371	4570	12-17	50	5643	8'3"	3'5"	7'8"
F275A.0.24	175473	41'2"	25'9"	420	27371	4570	12-17	50	5996	8'3"	3'5"	7'8"
F275A.0.25	173303	48'2"	32'5"	420	27371	4570	12-17	50	6305	8'3"	3'5"	7'8"
F275A.0.26	169614	55'1"	39'0"	420	27371	4570	12-17	50	6547	8'4"	3'5"	7'8"



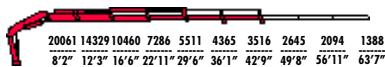
F275AC.0.23



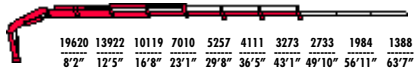
F275AC.0.24



F275AC.0.25

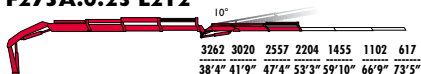


F275AC.0.26

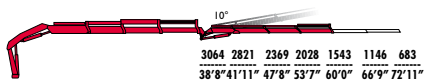


F275AC.0.23	182127	30'0"	17'2"	420	27371	4570	12-17	50	5533	8'3"	3'5"	7'8"
F275AC.0.24	177715	36'10"	23'11"	420	27371	4570	12-17	50	5886	8'3"	3'5"	7'8"
F275AC.0.25	176196	43'11"	30'6"	420	27371	4570	12-17	50	6194	8'3"	3'5"	7'8"
F275AC.0.26	173303	50'10"	37'2"	420	27371	4570	12-17	50	6437	8'4"	3'5"	7'8"

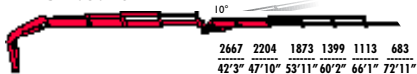
F275A.0.23 L2 I 2



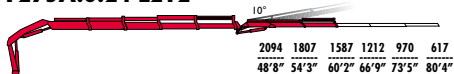
F275A.0.23 L2 I 3



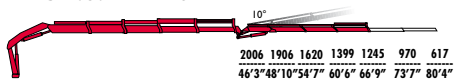
F275A.0.23 L2 I 4



F275A.0.24 L2 I 2



F275A.0.24 L2 I 3



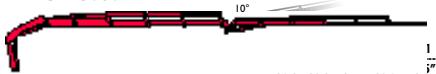
F275A.0.24 L2 I 4



F275A.0.25 L1 I 02



F275AC.0.24 L2 I 4



F275A.0.23 L2 I 2	180825	54'5"	30'6"	420	27371	4570	12-17	50	7054	8'3"	4'0"	7'8"
F275A.0.23 L2 I 3	180825	61'0"	36'10"	420	27371	4570	12-17	50	7231	8'3"	4'0"	7'8"
F275A.0.23 L2 I 4	180825	67'3"	42'9"	420	27371	4570	12-17	50	7385	8'3"	4'0"	7'8"
F275A.0.24 L2 I 2	176124	61'4"	37'2"	420	27371	4570	12-17	50	7407	8'3"	4'0"	7'8"
F275A.0.24 L2 I 3	176124	67'10"	43'7"	420	27371	4570	12-17	50	7738	8'3"	4'0"	7'8"
F275A.0.24 L2 I 4	176124	74'1"	49'6"	420	27371	4570	12-17	50	7738	8'3"	4'0"	7'8"
F275A.0.25 L1 I 02	173592	69'2"	44'3"	420	27371	4570	12-17	50	7330	8'3"	4'0"	7'8"
F275AC.0.24 L2 I 4	178293	69'10"	47'8"	420	27371	4570	12-17	50	7627	8'3"	4'0"	7'8"



STANDARD

ADC

Automatic
Dynamic Control

control

D850

Digital Multifunction
Distributor Bank

control

RCH/RCS

Radio Remote
Control

control

FX800

Faxi Electronic
Control

control

FSC

Faxi Stability
Control

control

CPM

Crane Position
Monitoring

control

FS

Flow Sharing

performance

XF

Extra Fast

performance

MPES

Multi Power
Extension System

performance

XP

Extra Power

performance

UHSS

Ultra High
Strength Steel

strength

FWD

Fewer Welds
Design

strength

CQ

Cast Quality

strength

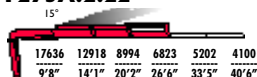
RPS

Rack and Pinion
System

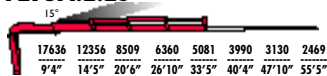
strength



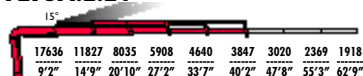
F275A.2.22



F275A.2.23



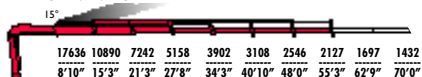
F275A.2.24



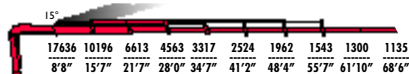
F275A.2.25



F275A.2.26



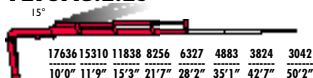
F275A.2.28



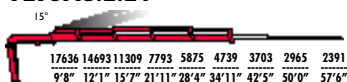
F275A.2.22	182127	26'8"	12'5"	420	27371	4720	12-17	50	6062	8'3"	3'5"	7'10"
F275A.2.23	178438	33'5"	19'0"	420	27371	4720	12-17	50	6536	8'3"	3'7"	7'10"
F275A.2.24	174749	40'4"	25'5"	420	27371	4720	12-17	50	6999	8'3"	3'7"	7'10"
F275A.2.25	169614	47'8"	32'9"	420	27371	4720	12-17	50	7385	8'3"	3'7"	7'10"
F275A.2.26	165925	55'3"	40'0"	420	27371	4720	12-17	50	7749	8'3"	3'7"	7'10"
F275A.2.28	159271	68'6"	52'11"	420	27371	4720	12-17	50	8322	8'4"	3'9"	7'10"



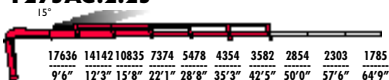
F275AC.2.23



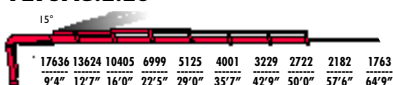
F275AC.2.24



F275AC.2.25

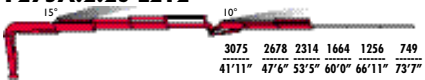


F275AC.2.26

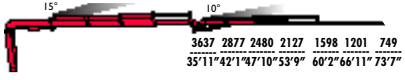


F275AC.2.23	180608	28'2"	16'4"	420	27371	4720	12-17	50	6349	8'3"	3'7"	7'10"
F275AC.2.24	178438	34'11"	22'9"	420	27371	4720	12-17	50	6812	8'3"	3'7"	7'10"
F275AC.2.25	174026	42'5"	30'2"	420	27371	4720	12-17	50	7198	8'3"	3'7"	7'10"
F275AC.2.26	171784	50'0"	37'4"	420	27371	4720	12-17	50	7561	8'3"	3'7"	7'10"

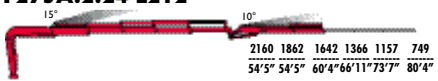
F275A.2.23 L2 I2



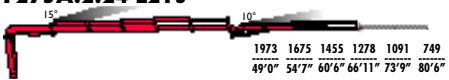
F275A.2.23 L2 I3



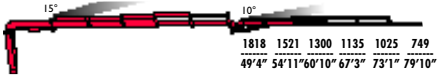
F275A.2.24 L2 I2



F275A.2.24 L2 I3



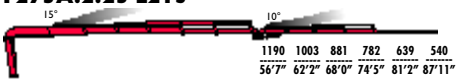
F275A.2.24 L2 I4



F275A.2.25 L2 I2



F275A.2.25 L2 I3



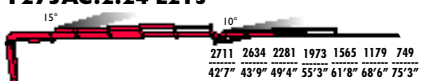
F275A.2.26 L I02



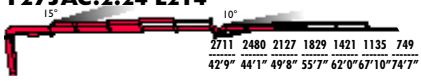
F275AC.2.24 L2 I2



F275AC.2.24 L2 I3



F275AC.2.24 L2 I4



F275A.2.23 L2 I2	178438	53'7"	30'6"	420	27371	4720	12-17	50	7716	8'3"	4'2"	8'5"
F275A.2.23 L2 I3	178438	60'2"	36'10"	420	27371	4430	12-17	50	7903	8'3"	4'2"	8'5"
F275A.2.24 L2 I2	174749	60'4"	37'0"	420	27371	4430	12-17	50	8090	8'3"	4'2"	8'7"
F275A.2.24 L2 I3	174749	66'11"	43'5"	420	27371	4720	12-17	50	8267	8'3"	4'2"	8'7"
F275A.2.24 L2 I4	174749	73'1"	49'4"	420	27371	4720	12-17	50	8421	8'3"	4'2"	8'7"
F275A.2.25 L2 I2	169614	67'10"	44'3"	420	27371	4720	12-17	50	8487	8'3"	4'2"	8'8"
F275A.2.25 L2 I3	169614	74'5"	50'8"	420	27371	4720	12-17	50	8675	8'3"	4'2"	8'8"
F275A.2.26 L I02	165925	76'2"	51'6"	420	27371	4720	12-17	50	8454	8'4"	4'2"	8'5"
F275AC.2.24 L2 I2	178438	55'1"	34'5"	420	27371	4430	12-17	50	3590	8'3"	4'2"	8'7"
F275AC.2.24 L2 I3	178438	61'8"	40'10"	420	27371	4720	12-17	50	8090	8'3"	4'2"	8'7"
F275AC.2.24 L2 I4	178438	67'10"	40'0"	420	27371	4720	12-17	50	8245	8'3"	4'2"	8'7"



STANDARD

ADC

Automatic
Dynamic Control

control

RCH/RCS

Radio Remote
Control

control

D850

Digital Multifunction
Distributor Bank

control

FX800

Fassi Electronic
Control

control

FSC

Fassi Stability
Control

control

CPM

Crane Position
Monitoring

control

FS

Flow Sharing

performance

XF

Extra Fast

performance

MPES

Multi Power
Extension System

performance

PROLINK

Progressive
Link

performance

UHSS

Ultra High
Strength Steel

strength

FWD

Fewer Welds
Design

strength

CQ

Cast Quality

strength

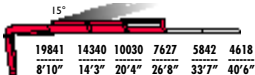
RPS

Rack and Pinion
System

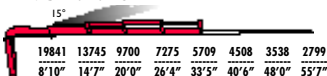
strength



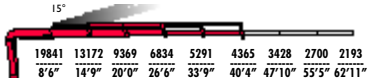
F295A.2.22



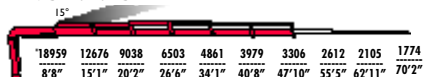
F295A.2.23



F295A.2.24



F295A.2.25



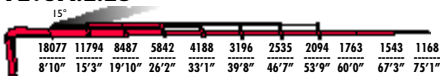
F295A.2.26



F295A.2.27



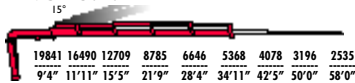
F295A.2.28



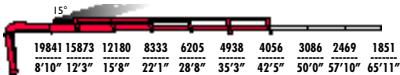
Model	Weight	Length	Width	Capacity	Reach	Height	Counterweight	Radius	Radius	Radius	Radius	
F295A.2.22	204983	26'8"	12'5"	400	30248	4500	16-21	50	7275	8'2"	3'5"	8'0"
F295A.2.23	200571	33'5"	19'0"	400	30248	4500	16-21	50	7649	8'2"	3'7"	8'0"
F295A.2.24	194640	40'4"	25'7"	400	30248	4500	16-21	50	8212	8'2"	3'7"	8'0"
F295A.2.25	190951	47'10"	32'9"	400	30248	4500	16-21	50	8697	8'2"	3'7"	8'0"
F295A.2.26	186539	54'9"	39'4"	400	30248	4500	16-21	50	9104	8'2"	3'7"	8'0"
F295A.2.27	182850	61'10"	46'3"	400	30248	4500	16-21	50	9479	8'2"	3'10"	8'0"
F295A.2.28	179885	67'3"	52'11"	400	30248	4500	16-21	50	9768	8'3"	3'10"	8'0"



F295AC.2.24



F295AC.2.25

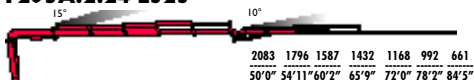


F295AC.2.26

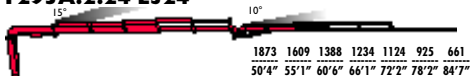


F295AC.2.24	197606	34'11"	22'11"	400	30248	4500	16-21	50	8013	8'2"	3'7"	8'0"
F295AC.2.25	195363	42'5"	30'0"	400	30248	4500	16-21	50	8498	8'2"	3'7"	8'0"
F295AC.2.26	193193	49'10"	36'8"	400	30248	4500	16-21	50	8906	8'2"	3'7"	8'0"

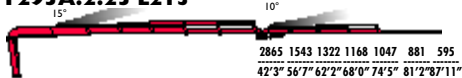
F295A.2.24 L323



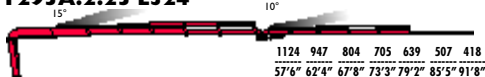
F295A.2.24 L324



F295A.2.25 L213



F295A.2.25 L324



F295A.2.26 L212



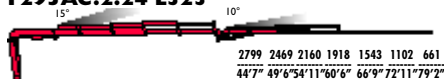
F295A.2.26 L213



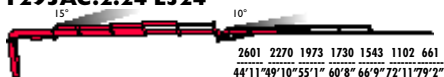
F295A.2.26 L214



F295AC.2.24 L323



F295AC.2.24 L324



F295A.2.24 L323	194640	65'9"	41'4"	400	30248	4500	16-21	50	9876	8'3"	4'2"	8'11"
F295A.2.24 L324	194640	72'2"	47'2"	400	30248	4500	16-21	50	10097	8'3"	4'2"	8'11"
F295A.2.25 L213	190951	69'2"	45'5"	400	30248	4500	16-21	50	9975	8'3"	4'2"	8'10"
F295A.2.25 L324	190951	79'2"	54'5"	400	30248	4500	16-21	50	10593	8'3"	4'2"	8'11"
F295A.2.26 L212	186539	74'9"	51'0"	400	30248	4500	16-21	50	10119	8'3"	4'2"	9'0"
F295A.2.26 L213	186539	81'4"	57'4"	400	30248	4500	16-21	50	10306	8'3"	4'2"	9'0"
F295A.2.26 L214	186539	87'7"	63'3"	400	30248	4500	16-21	50	10460	8'3"	4'2"	9'0"
F295AC.2.24 L323	197606	60'6"	38'8"	400	30248	4500	16-21	50	9678	8'3"	4'2"	8'11"
F295AC.2.24 L324	197606	66'9"	44'7"	400	30248	4500	16-21	50	9898	8'3"	4'2"	8'11"



STANDARD

ADC

Automatic
Dynamic Control

control

D850

Digital Multifunction
Distributor Bank

control

RCH/RCS

Radio Remote
Control

control

FX800

Faxi Electronic
Control

control

FSC

Faxi Stability
Control

control

CPM

Crane Position
Monitoring

control

FS

Flow Sharing

performance

XF

Extra Fast

performance

MPES

Multi Power
Extension System

performance

PROLINK

Progressive
Link

performance

FWD

Fewer Welds
Design

strength

UHSS

Ultra High
Strength Steel

strength

CQ

Cast Quality

strength



F295RA.2.22

19841	14340	10030	7627	5842	4618
8'10"	14'3"	20'4"	26'8"	33'7"	40'6"

F295RA.2.23

19841	13745	9700	7275	5709	4508	3538	2799
8'10"	14'7"	20'0"	26'4"	33'5"	40'6"	48'0"	55'7"

F295RA.2.24

19841	13172	9369	6834	5291	4365	3428	2700	2193
8'6"	14'9"	20'0"	26'6"	33'9"	40'4"	47'10"	55'5"	62'11"

F295RA.2.25

18959	12676	9038	6503	4861	3979	3306	2612	2105	1774
8'8"	15'1"	20'2"	26'6"	34'1"	40'8"	47'10"	55'5"	62'11"	70'2"

F295RA.2.26

18739	12246	8818	6283	4629	3637	2976	2535	1984	1653	1322
8'8"	15'3"	19'10"	26'2"	33'5"	40'10"	48'0"	54'9"	62'7"	70'8"	78'8"

F295RA.2.27

18298	11739	7815	5555	4166	3284	2623	2138	1862	1543	1289
9'2"	15'7"	21'7"	28'0"	34'7"	41'2"	48'4"	55'7"	61'10"	69'10"	77'11"

F295RA.2.28

18077	11794	8487	5842	4188	3196	2535	2094	1763	1543	1168
8'10"	15'3"	19'10"	26'2"	33'1"	39'8"	46'7"	53'9"	60'0"	67'3"	75'1"



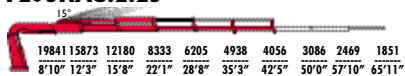
F295RA.2.22	28,34	8,15	3,80	360	25	31	60-80	190	3460	2520	1070	2460
F295RA.2.23	27,73	10,20	5,80	360	25	31	60-80	190	3630	2520	1125	2460
F295RA.2.24	194640	40'4"	25'7"	360	18444	4500	16-21	50	8564	2520	1125	2460
F295RA.2.25	190951	47'10"	32'9"	360	18444	4500	16-21	50	9049	8'3"	3'8"	8'0"
F295RA.2.26	186539	54'9"	39'4"	360	18444	4500	16-21	50	9457	8'3"	3'8"	8'0"
F295RA.2.27	182850	61'10"	46'3"	360	18444	4500	16-21	50	9832	8'3"	3'10"	8'0"
F295RA.2.28	179885	67'3"	52'11"	360	18444	4500	16-21	50	10121	8'3"	3'10"	8'0"



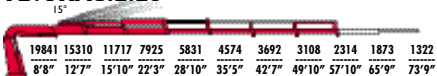
F295RAC.2.24



F295RAC.2.25

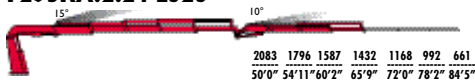


F295RAC.2.26

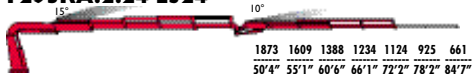


F295RAC.2.24	197606	34'11"	22'11"	360	25	31	16-21	50	8366	8'3"	3'8"	8'0"
F295RAC.2.25	195363	42'5"	30'0"	360	25	31	16-21	50	8851	8'3"	3'8"	8'0"
F295RAC.2.26	193193	49'10"	36'8"	360	25	31	16-21	50	9259	8'3"	3'8"	8'0"

F295RA.2.24 L323



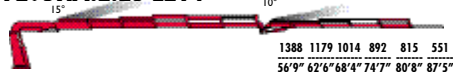
F295RA.2.24 L324



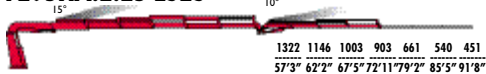
F295RA.2.25 L213



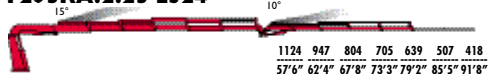
F295RA.2.25 L214



F295RA.2.25 L323



F295RA.2.25 L324



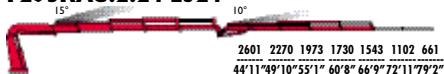
F295RA.2.26 L213



F295RA.2.26 L214



F295RAC.2.24 L324



F295RA.2.24 L323	194640	65'7"	41'4"	360	18444	4500	16-21	50	10229	8'3"	4'3"	8'11"
F295RA.2.24 L324	194640	72'2"	47'6"	360	18444	4500	16-21	50	10449	8'3"	4'3"	8'11"
F295RA.2.25 L213	190951	74'5"	45'5"	360	18444	4500	16-21	50	10328	8'4"	4'3"	8'10"
F295RA.2.25 L214	190951	80'8"	56'7"	360	18444	4500	16-21	50	10482	8'4"	4'3"	8'10"
F295RA.2.25 L323	190951	72'11"	48'6"	360	18444	4500	16-21	50	10725	8'3"	4'3"	8'11"
F295RA.2.25 L324	190951	79'2"	54'5"	360	18444	4500	16-21	50	10945	8'3"	4'3"	8'11"
F295RA.2.26 L213	186539	81'4"	57'4"	360	18444	4500	16-21	50	10659	8'3"	4'3"	9'0"
F295RA.2.26 L214	186539	87'7"	63'3"	360	18444	4500	16-21	50	10813	8'3"	4'3"	9'0"
F295RAC.2.24 L324	197606	66'9"	44'7"	360	18444	4500	16-21	50	10251	8'3"	4'3"	8'11"



STANDARD

ADC

Automatic
Dynamic Control

control

D850

Digital Multifunction
Distributor Bank

control

RCH/RCS

Radio Remote
Control

control

FX800

Faxi Electronic
Control

control

FSC

Faxi Stability
Control

control

CPM

Crane Position
Monitoring

control

FS

Flow Sharing

performance

XF

Extra Fast

performance

MPES

Multi Power
Extension System

performance

XP

Extra Power

performance

PROLINK

Progressive
Link

performance

UHSS

Ultra High
Strength Steel

strength

FWD

Fewer Welds
Design

strength

CQ

Cast Quality

strength

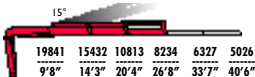
RPS

Rack and Pinion
System

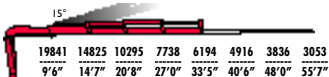
strength



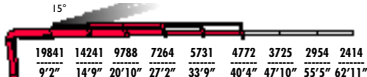
F315A.2.22



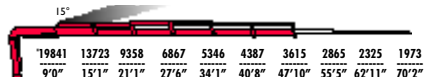
F315A.2.23



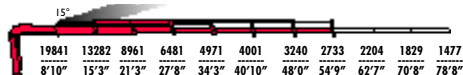
F315A.2.24



F315A.2.25



F315A.2.26



F315A.2.27



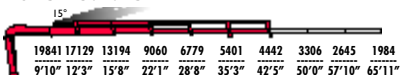
F315A.2.28



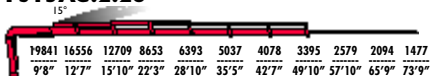
F315A.2.22	220462	26'8"	12'5"	400	30248	4500	16-21	50	7275	8'2"	3'5"	8'0"
F315A.2.23	216050	33'5"	19'0"	400	30248	4500	16-21	50	7649	8'2"	3'7"	8'0"
F315A.2.24	210119	40'4"	25'7"	400	30248	4500	16-21	50	8212	8'2"	3'7"	8'0"
F315A.2.25	207153	47'10"	32'9"	400	30248	4500	16-21	50	8697	8'2"	3'7"	8'0"
F315A.2.26	202741	54'9"	39'4"	400	30248	4500	16-21	50	9104	8'2"	3'7"	8'0"
F315A.2.27	198329	61'10"	46'3"	400	30248	4500	16-21	50	9479	8'2"	3'10"	8'0"
F315A.2.28	195363	67'3"	52'11"	400	30248	4500	16-21	50	9768	8'3"	3'10"	8'0"



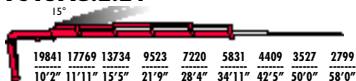
F3 I 5AC.2.25



F3 I 5AC.2.26

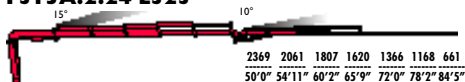


F3 I 5AC.2.24

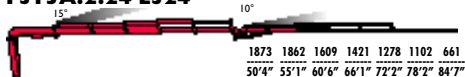


F3 I 5AC.2.24	213084	34'11"	22'11"	400	30248	4500	16-21	50	8013	8'2"	3'7"	8'0"
F3 I 5AC.2.25	210842	42'5"	30'0"	400	30248	4500	16-21	50	8498	8'2"	3'7"	8'0"
F3 I 5AC.2.26	209395	49'10"	36'8"	400	30248	4500	16-21	50	8906	8'2"	3'7"	8'0"

F315A.2.24 L323



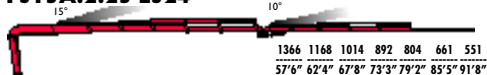
F315A.2.24 L324



F315A.2.25 L213



F315A.2.25 L324



F315A.2.26 L212



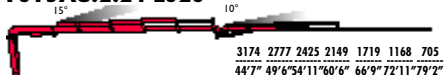
F315A.2.26 L213



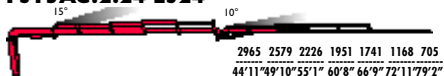
F315A.2.26 L214



F315AC.2.24 L323



F315AC.2.24 L324



F315A.2.24 L323	210119	65'9"	41'4"	400	30248	4500	16-21	50	9876	8'3"	4'2"	8'11"
F315A.2.24 L324	210119	72'2"	47'2"	400	30248	4500	16-21	50	10097	8'3"	4'2"	8'11"
F315A.2.25 L213	207153	72'6"	45'5"	400	30248	4500	16-21	50	9975	8'3"	4'2"	8'10"
F315A.2.25 L324	207153	79'2"	54'5"	400	30248	4500	16-21	50	10593	8'3"	4'2"	8'11"
F315A.2.26 L212	202741	74'9"	51'0"	400	30248	4500	16-21	50	10119	8'3"	4'2"	9'0"
F315A.2.26 L213	202741	81'4"	57'4"	400	30248	4500	16-21	50	10306	8'3"	4'2"	9'0"
F315A.2.26 L214	202741	87'7"	63'3"	400	30248	4500	16-21	50	10460	8'3"	4'2"	9'0"
F315AC.2.24 L323	213084	60'6"	38'8"	400	30248	4500	16-21	50	9678	8'3"	4'2"	8'11"
F315AC.2.24 L324	213084	66'9"	44'7"	400	30248	4500	16-21	50	9898	8'3"	4'2"	8'11"



STANDARD

ADC

Automatic
Dynamic Control

control

D850

Digital Multifunction
Distributor Bank

control

RCH/RCS

Radio Remote
Control

control

FX800

Faxi Electronic
Control

control

FSC

Faxi Stability
Control

control

CPM

Crane Position
Monitoring

control

FS

Flow Sharing

performance

XF

Extra Fast

performance

MPES

Multi Power
Extension System

performance

XP

Extra Power

performance

PROLINK

Progressive
Link

performance

UHSS

Ultra High
Strength Steel

strength

FWD

Fewer Welds
Design

strength

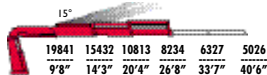
CQ

Cast Quality

strength



F3 I 5RA.2.22



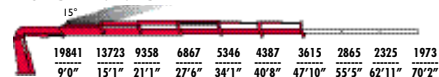
F3 I 5A.2.23



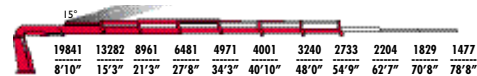
F3 I 5RA.2.24



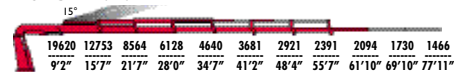
F3 I 5RA.2.25



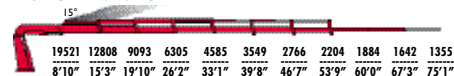
F3 I 5RA.2.26



F3 I 5RA.2.27



F3 I 5RA.2.28



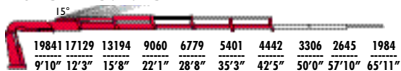
Model	Weight	Max. Lift	Reach	Capacity	Height	Length	Counterweight	Radius	Height	Radius	Height	
F3 I 5RA.2.22	220462	26'8"	12'5"	360	18444	4500	16-21	50	7627	8'3"	3'6"	8'0"
F3 I 5RA.2.23	216050	33'5"	19'0"	360	18444	4500	16-21	50	8002	8'3"	3'8"	8'0"
F3 I 5RA.2.24	210119	40'4"	25'7"	360	18444	4500	16-21	50	8564	8'3"	3'8"	8'0"
F3 I 5RA.2.25	207153	47'10"	32'9"	360	18444	4500	16-21	50	9049	8'3"	3'8"	8'0"
F3 I 5RA.2.26	202741	54'9"	39'4"	360	18444	4500	16-21	50	9457	8'3"	3'8"	8'0"
F3 I 5RA.2.27	198329	61'10"	46'3"	360	18444	4500	16-21	50	9832	8'3"	3'10"	8'0"
F3 I 5RA.2.28	195363	67'3"	52'11"	360	18444	4500	16-21	50	10121	8'3"	3'10"	8'0"



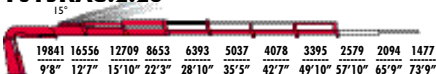
F3 I 5RAC.2.24



F3 I 5RAC.2.25

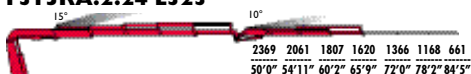


F3 I 5RAC.2.26

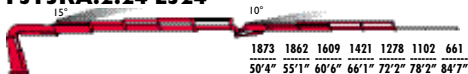


F3 I 5RAC.2.24	213084	34'11"	22'11"	360	18444	4500	16-21	50	8366	8'3"	3'8"	8'0"
F3 I 5RAC.2.25	210842	42'5"	30'0"	360	18444	4500	16-21	50	8851	8'3"	3'8"	8'0"
F3 I 5RAC.2.26	209395	49'4"	36'8"	360	18444	4500	16-21	50	9259	8'3"	3'8"	8'0"

F315RA.2.24 L323



F315RA.2.24 L324



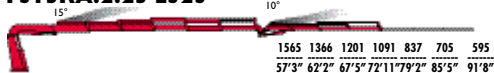
F315RA.2.25 L213



F315RA.2.25 L214



F315RA.2.25 L323



F315RA.2.25 L324



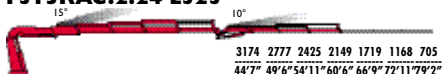
F315RA.2.26 L213



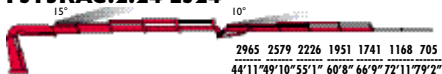
F315RA.2.26 L214



F315RAC.2.24 L323



F315RAC.2.24 L324



F315RA.2.24 L323	210119	65'9"	41'4"	360	18444	4500	16-21	50	10229	8'3"	4'3"	8'11"
F315RA.2.24 L324	210119	72'2"	47'4"	360	18444	4500	16-21	50	10449	8'3"	4'3"	8'11"
F315RA.2.25 L213	207153	74'5"	45'5"	360	18444	4500	16-21	50	10328	8'3"	4'3"	8'10"
F315RA.2.25 L214	207153	80'8"	56'7"	360	18444	4500	16-21	50	10482	8'3"	4'3"	8'10"
F315RA.2.25 L323	207153	80'8"	48'6"	360	18444	4500	16-21	50	10725	8'3"	4'3"	8'11"
F315RA.2.25 L324	207153	79'2"	54'5"	360	18444	4500	16-21	50	10945	8'3"	4'3"	8'11"
F315RA.2.26 L213	202741	81'4"	57'4"	360	18444	4500	16-21	50	10659	8'3"	4'3"	9'0"
F315RA.2.26 L214	202741	87'7"	63'3"	360	18444	4500	16-21	50	10813	8'3"	4'3"	9'0"
F315RAC.2.24 L323	213084	60'6"	38'8"	360	18444	4500	16-21	50	10030	8'3"	4'3"	8'11"
F315RAC.2.24 L324	213084	66'9"	44'7"	360	18444	4500	16-21	50	10251	8'3"	4'3"	8'11"



STANDARD

ADC

Automatic
Dynamic Control

control

D850

Digital Multifunction
Distributor Bank

control

RCH/RCS

Radio Remote
Control

control

FX800

Faxi Electronic
Control

control

FSC

Faxi Stability
Control

control

CPM

Crane Position
Monitoring

control

FS

Flow Sharing

performance

XF

Extra Fast

performance

MPES

Multi Power
Extension System

performance

PROLINK

Progressive
Link

performance

UHSS

Ultra High
Strength Steel

strength

FWD

Fewer Welds
Design

strength

CQ

Cast Quality

strength

RPS

Rack and Pinion
System

strength



F335A.2.22

15°

20943	16060	11221	8520	6547	5202
10'0"	14'3"	20'4"	26'8"	33'7"	40'6"

F335A.2.23

15°

20943	15542	10824	8157	6547	5202	4067	3240
9'10"	14'5"	20'6"	26'10"	33'5"	40'4"	47'10"	55'5"

F335A.2.24

15°

20943	14914	10262	7627	6029	5015	3924	3130	2425
9'6"	14'9"	20'10"	27'2"	33'9"	40'2"	47'8"	55'3"	63'3"

F335A.2.25

15°

20943	14351	9799	7198	5599	4596	3780	2976	2425	1918
9'4"	15'1"	21'1"	27'6"	34'1"	40'8"	47'10"	55'5"	62'11"	70'2"

F335A.2.26

15°

20282	13844	9380	6812	5235	4221	3417	2899	2204	1829	1322
9'6"	15'3"	21'3"	27'8"	34'3"	40'10"	48'0"	54'9"	62'7"	70'8"	78'8"

F335A.2.27

15°

19400	13304	8972	6448	4894	3902	3097	2546	2226	1851	1322
9'10"	15'7"	21'7"	28'0"	34'7"	41'2"	48'4"	55'7"	61'10"	69'10"	77'11"

F335A.2.28

15°

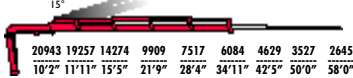
18959	13095	8741	6216	4541	3549	2854	2292	1973	1730	1322	551
10'0"	15'7"	21'7"	28'0"	34'7"	41'2"	48'4"	55'7"	62'0"	68'6"	75'1"	81'8"



F335A.2.22	229286	26'8"	12'5"	400	35044	4500	16-21	50	7275	8'2"	3'5"	8'0"
F335A.2.23	224151	33'5"	19'0"	400	35044	4500	16-21	50	7649	8'2"	3'7"	8'0"
F335A.2.24	220462	40'2"	25'7"	400	35044	4500	16-21	50	8212	8'2"	3'7"	8'0"
F335A.2.25	216773	47'10"	32'9"	400	35044	4500	16-21	50	8697	8'2"	3'7"	8'0"
F335A.2.26	210842	54'9"	39'4"	400	35044	4500	16-21	50	9104	8'2"	3'7"	8'0"
F335A.2.27	207153	61'10"	46'3"	400	35044	4500	16-21	50	9656	8'2"	3'10"	8'0"
F335A.2.28	204260	68'6"	52'11"	400	35044	4500	16-21	50	9768	8'3"	3'10"	8'0"



F335AC.2.24

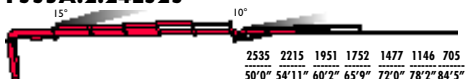


F335AC.2.26

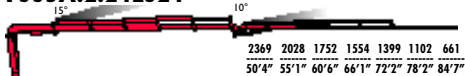


F335AC.2.24	221185	34'11"	22'11"	400	35044	4500	16-21	50	8179	8'2"	3'7"	8'0"
F335AC.2.26	217496	49'4"	36'8"	400	35044	4500	16-21	50	9060	8'2"	3'7"	8'0"

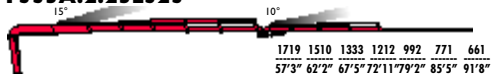
F335A.2.24L323



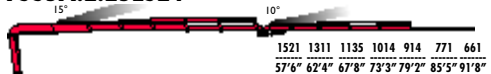
F335A.2.24L324



F335A.2.25L323



F335A.2.25L324



F335A.2.26L212



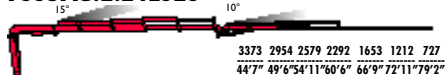
F335A.2.26L213



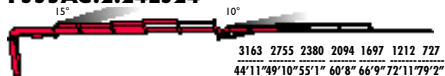
F335A.2.26L214



F335AC.2.24L323



F335AC.2.24L324



F335A.2.24L323	220462	65°9"	41'4"	400	35044	4500	16-21	50	10361	8'3"	4'2"	8'11"
F335A.2.24L324	220462	72°0"	47'2"	400	35044	4500	16-21	50	10582	8'3"	4'2"	8'11"
F335A.2.25L323	216773	72°11"	48'6"	400	35044	4500	16-21	50	10802	8'3"	4'2"	8'11"
F335A.2.25L324	216773	79°2"	54'5"	400	35044	4500	16-21	50	11023	8'3"	4'2"	8'11"
F335A.2.26L212	210842	74°9"	51'0"	400	35044	4500	16-21	50	10692	8'3"	4'2"	9'0"
F335A.2.26L213	210842	81°4"	57'4"	400	35044	4500	16-21	50	10868	8'3"	4'2"	9'0"
F335A.2.26L214	210842	87°7"	63'3"	400	35044	4500	16-21	50	11023	8'3"	4'2"	9'0"
F335AC.2.24L323	221185	60°6"	38'8"	400	35044	4500	16-21	50	9843	8'3"	4'2"	8'11"
F335AC.2.24L324	221185	66°9"	44'7"	400	35044	4500	16-21	50	10063	8'3"	4'2"	8'11"



STANDARD

ADC

Automatic
Dynamic Control

control

D850

Digital Multifunction
Distributor Bank

control

RCH/RCS

Radio Remote
Control

control

FX800

Faxi Electronic
Control

control

FSC

Faxi Stability
Control

control

CPM

Crane Position
Monitoring

control

FS

Flow Sharing

performance

XF

Extra Fast

performance

MPES

Multi Power
Extension System

performance

PROLINK

Progressive
Link

performance

FWD

Fewer Welds
Design

strength

UHSS

Ultra High
Strength Steel

strength

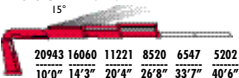
CQ

Cast Quality

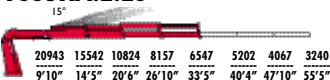
strength



F335RA.2.22



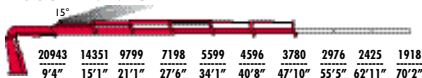
F335RA.2.23



F335RA.2.24



F335RA.2.25



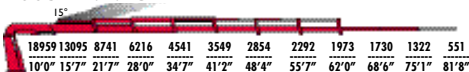
F335RA.2.26



F335RA.2.27



F335RA.2.28

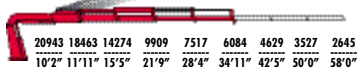


Model	Weight	Height	Width	Capacity	Capacity	Capacity	Capacity	Capacity	Capacity	Capacity	Capacity	Capacity
F335RA.2.22	229286	26'8"	12'5"	360	25084	4500	16-21	50	7738	8'3"	3'6"	8'0"
F335RA.2.23	224151	33'5"	19'0"	360	25084	4500	16-21	50	8245	8'3"	3'8"	8'0"
F335RA.2.24	220462	40'4"	25'7"	360	25084	4500	16-21	50	8730	8'3"	3'8"	8'0"
F335RA.2.25	216773	47'10"	32'9"	360	25084	4500	16-21	50	9171	8'3"	3'8"	8'0"
F335RA.2.26	210842	54'9"	39'6"	360	25084	4500	16-21	50	9612	8'3"	3'8"	8'0"
F335RA.2.27	207153	61'10"	46'3"	360	25084	4500	16-21	50	10008	8'3"	3'10"	8'0"
F335RA.2.28	204260	68'6"	52'11"	360	25084	4500	16-21	50	10273	8'3"	3'10"	8'0"



F335RAC.2.24

15°



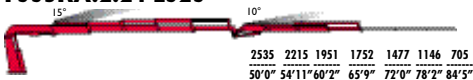
F335RAC.2.26

15°

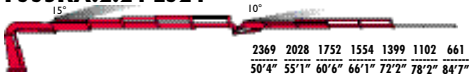


F335RAC.2.24	221185	34'11"	22'11"	360	34,0	4500	16-21	50	8531	8'3"	3'8"	8'0"
F335RAC.2.26	217496	49'4"	36'8"	360	25084	4500	16-21	50	9413	8'3"	3'8"	8'0"

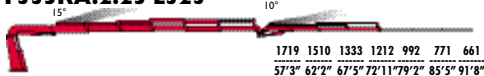
F335RA.2.24 L323



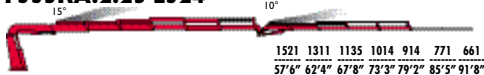
F335RA.2.24 L324



F335RA.2.25 L323



F335RA.2.25 L324



F335RA.2.26 L2 I3



F335RA.2.26 L2 I4



F335RAC.2.24 L323



F335RAC.2.24 L324



F335RA.2.24 L323	220462	65'9"	41'4"	360	25084	4500	16-21	50	10714	8'3"	4'3"	8'11"
F335RA.2.24 L324	220462	72'2"	47'4"	360	25084	4500	16-21	50	10934	8'3"	4'3"	8'11"
F335RA.2.25 L323	216773	72'11"	48'6"	360	25084	4500	16-21	50	11155	8'3"	4'3"	8'11"
F335RA.2.25 L324	216773	79'2"	54'5"	360	25084	4500	16-21	50	11375	8'3"	4'3"	8'11"
F335RA.2.26 L2 I3	210842	81'4"	57'4"	360	25084	4500	16-21	50	11221	8'3"	4'3"	9'0"
F335RA.2.26 L2 I4	210842	87'7"	63'3"	360	25084	4500	16-21	50	11375	8'3"	4'3"	9'0"
F335RAC.2.24 L323	221185	60'2"	38'8"	360	25084	4500	16-21	50	10196	8'3"	4'3"	8'11"
F335RAC.2.24 L324	221185	66'9"	44'7"	360	25084	4500	16-21	50	10416	8'3"	4'3"	8'11"



STANDARD

ADC

Automatic
Dynamic Control

control

D850

Digital Multifunction
Distributor Bank

control

RCH/RCS

Radio Remote
Control

control

FX800

Faxi Electronic
Control

control

FSC

Faxi Stability
Control

control

CPM

Crane Position
Monitoring

control

FS

Flow Sharing

performance

XF

Extra Fast

performance

MPES

Multi Power
Extension System

performance

XP

Extra Power

performance

PROLINK

Progressive
Link

performance

UHSS

Ultra High
Strength Steel

strength

FWD

Fewer Welds
Design

strength

CQ

Cast Quality

strength

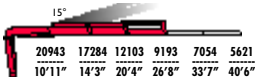
RPS

Rack and Pinion
System

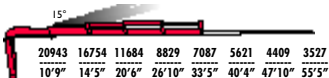
strength



F365A.2.22



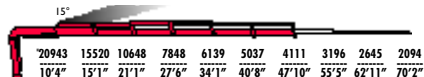
F365A.2.23



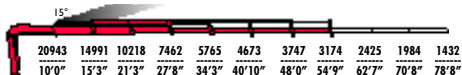
F365A.2.24



F365A.2.25



F365A.2.26



F365A.2.27



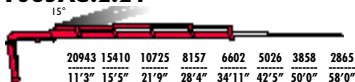
F365A.2.28



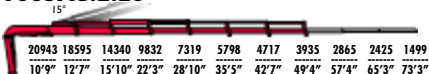
F365A.2.22	247007	26'8"	12'5"	400	35044	4720	16-21	50	7275	8'2"	3'5"	8'0"
F365A.2.23	241872	33'5"	19'0"	400	35044	4720	16-21	50	7649	8'2"	3'7"	8'0"
F365A.2.24	237387	40'4"	25'7"	400	35044	4720	16-21	50	8212	8'2"	3'7"	8'0"
F365A.2.25	234494	47'10"	32'9"	400	35044	4720	16-21	50	8697	8'2"	3'7"	8'0"
F365A.2.26	228563	54'9"	39'4"	400	35044	4720	16-21	50	9104	8'2"	3'7"	8'0"
F365A.2.27	224874	61'10"	46'3"	400	35044	4720	16-21	50	9656	8'2"	3'10"	8'0"
F365A.2.28	221185	68'6"	52'11"	400	35044	4720	16-21	50	9768	8'3"	3'10"	8'0"



F365AC.2.24

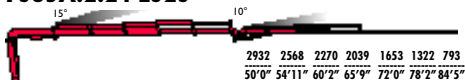


F365AC.2.26

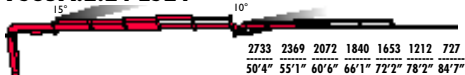


F365AC.2.24	237387	34'11"	22'11"	400	35044	4720	16-21	50	8179	8'2"	3'7"	8'0"
F365AC.2.26	235217	49'4"	36'8"	400	35044	4720	16-21	50	9060	8'2"	3'7"	8'0"

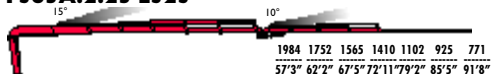
F365A.2.24 L323



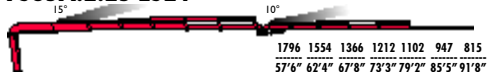
F365A.2.24 L324



F365A.2.25 L323



F365A.2.25 L324



F365A.2.26 L212



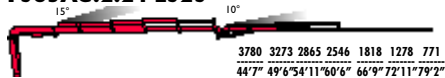
F365A.2.26 L213



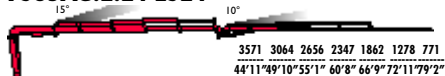
F365A.2.26 L214



F365AC.2.24 L323



F365AC.2.24 L324



F365A.2.24 L323	237387	65'9"	41'4"	400	35044	4720	16-21	50	10361	8'3"	4'2"	8'11"
F365A.2.24 L324	237387	72'0"	47'2"	400	35044	4720	16-21	50	10582	8'3"	4'2"	8'11"
F365A.2.25 L323	234494	72'11"	48'6"	400	35044	4720	16-21	50	10802	8'3"	4'2"	8'11"
F365A.2.25 L324	234494	79'2"	54'5"	400	35044	4720	16-21	50	11023	8'3"	4'2"	8'11"
F365A.2.26 L212	228563	74'9"	51'0"	400	35044	4720	16-21	50	10692	8'3"	4'2"	9'0"
F365A.2.26 L213	228563	81'4"	57'4"	400	35044	4720	16-21	50	10868	8'3"	4'2"	9'0"
F365A.2.26 L214	228563	87'7"	63'3"	400	35044	4720	16-21	50	11023	8'3"	4'2"	9'0"
F365AC.2.24 L323	237387	60'6"	38'8"	400	35044	4720	16-21	50	9843	8'3"	4'2"	8'11"
F365AC.2.24 L324	237387	66'9"	44'7"	400	35044	4720	16-21	50	10063	8'3"	4'2"	8'11"



STANDARD

ADC

Automatic Dynamic Control

control

D850

Digital Multifunction Distributor Bank

control

RCH/RCS

Radio Remote Control

control

FX800

Fasi Electronic Control

control

FSC

Fasi Stability Control

control

CPM

Crane Position Monitoring

control

FS

Flow Sharing

performance

XF

Extra Fast

performance

XP

Extra Power

performance

MPES

Multi Power Extension System

performance

PROLINK

Progressive Link

performance

UHSS

Ultra High Strength Steel

strength

FWD

Fewer Welds Design

strength

CQ

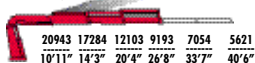
Cast Quality

strength



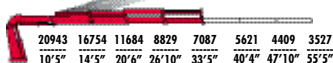
F365RA.2.22

15°



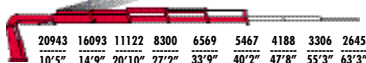
F365RA.2.23

15°



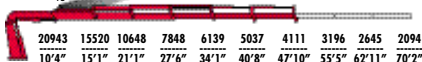
F365RA.2.24

15°



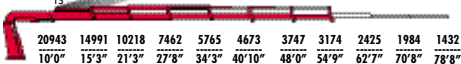
F365RA.2.25

15°



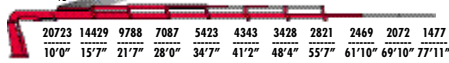
F365RA.2.26

15°



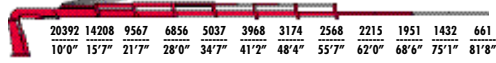
F365RA.2.27

15°



F365RA.2.28

15°



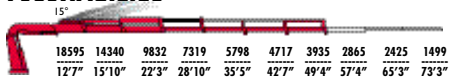
F365RA.2.22	247007	26'8"	12'5"	360	25084	4500	16-21	50	7738	8'3"	3'6"	8'0"
F365RA.2.23	241871	33'5"	19'0"	360	25084	4500	16-21	50	8245	8'3"	3'8"	8'0"
F365RA.2.24	237387	40'4"	25'7"	360	25084	4500	16-21	50	8730	8'3"	3'8"	8'0"
F365RA.2.25	234494	47'10"	32'9"	360	25084	4500	16-21	50	9171	8'3"	3'8"	8'0"
F365RA.2.26	228563	54'9"	39'6"	360	25084	4500	16-21	50	9612	8'3"	3'8"	8'0"
F365RA.2.27	224874	61'10"	46'3"	360	25084	4500	16-21	50	10008	8'3"	3'10"	8'0"
F365RA.2.28	221185	68'6"	52'11"	360	25084	4500	16-21	50	10273	8'3"	3'10"	8'0"



F365RAC.2.24

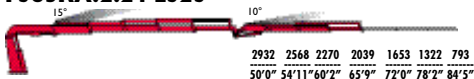


F365RAC.2.26

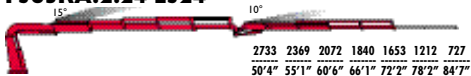


F365RAC.2.24	237387	34'11"	22'9"	360	34,0	4500	16-21	50	8531	8'3"	3'8"	8'0"
F365RAC.2.26	235217	49'4"	36'10"	360	25084	4500	16-21	50	9413	8'3"	3'8"	8'0"

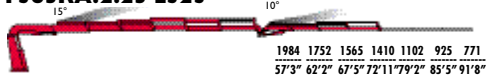
F365RA.2.24 L323



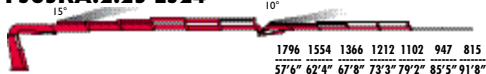
F365RA.2.24 L324



F365RA.2.25 L323



F365RA.2.25 L324



F365RA.2.26 L212



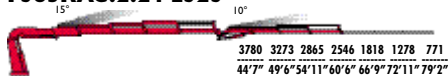
F365RA.2.26 L213



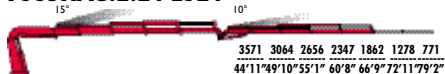
F365RA.2.26 L214



F365RAC.2.24 L323



F365RAC.2.24 L324



F365RA.2.24 L323	237387	65'9"	41'4"	360	25084	4500	16-21	50	10714	8'3"	4'3"	8'11"
F365RA.2.24 L324	237387	72'2"	47'2"	360	25084	4500	16-21	50	10934	8'3"	4'3"	8'11"
F365RA.2.25 L323	234494	72'11"	48'6"	360	25084	4500	16-21	50	11155	8'3"	4'3"	8'11"
F365RA.2.25 L324	234494	79'2"	54'5"	360	25084	4500	16-21	50	11375	8'3"	4'3"	8'11"
F365RA.2.26 L212	228563	74'9"	51'0"	360	25084	4500	16-21	50	11045	8'3"	4'3"	9'0"
F365RA.2.26 L213	228563	81'4"	57'4"	360	25084	4500	16-21	50	11221	8'3"	4'3"	9'0"
F365RA.2.26 L214	228563	87'7"	63'3"	360	25084	4500	16-21	50	11375	8'3"	4'3"	9'0"
F365RAC.2.24 L323	237387	60'6"	38'8"	360	25084	4500	16-21	50	10196	8'3"	4'3"	8'11"
F365RAC.2.24 L324	237387	66'9"	44'7"	360	25084	4500	16-21	50	10416	8'3"	4'3"	8'11"



STANDARD

ADC

Automatic
Dynamic Control

control

D850

Digital Multifunction
Distributor Bank

control

RCH/RCS

Radio Remote
Control

control

FX800

Faxi Electronic
Control

control

FSC

Faxi Stability
Control

control

CPM

Crane Position
Monitoring

control

FS

Flow Sharing

performance

XF

Extra Fast

performance

MPES

Multi Power
Extension System

performance

FL

Full Lift

performance

PROLINK

Progressive
Link

performance

UHSS

Ultra High
Strength Steel

strength

FWD

Fewer Welds
Design

strength

CQ

Cast Quality

strength

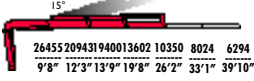
RPS

Rack and Pinion
System

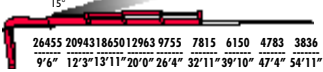
strength



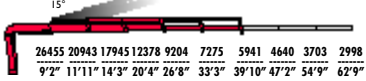
F385A.2.22



F385A.2.23



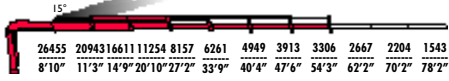
F385A.2.24



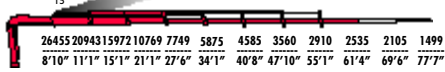
F385A.2.25



F385A.2.26



F385A.2.27



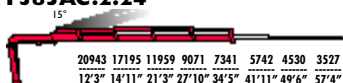
F385A.2.28



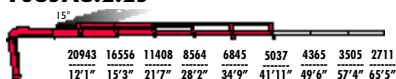
F385A.2.22	271310	26'2"	12'5"	430	35044	4500	16-21	50	8994	8'3"	4'0"	7'11"
F385A.2.23	260243	33'1"	19'0"	430	35044	4500	16-21	50	9545	8'3"	4'2"	7'11"
F385A.2.24	255831	39'10"	25'7"	430	35044	4500	16-21	50	10097	8'3"	4'2"	7'11"
F385A.2.25	249177	47'4"	32'9"	430	35044	4500	16-21	50	10648	8'3"	4'2"	7'11"
F385A.2.26	245488	54'3"	39'4"	430	35044	4500	16-21	50	11199	8'3"	4'2"	7'11"
F385A.2.27	241076	61'10"	46'3"	430	35044	4500	16-21	50	11530	8'3"	4'4"	7'11"
F385A.2.28	239629	68'2"	52'11"	430	35044	3150	16-21	50	11860	8'3"	4'4"	7'11"



F385AC.2.24



F385AC.2.25

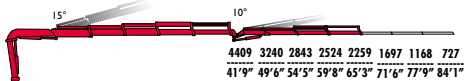


F385AC.2.26

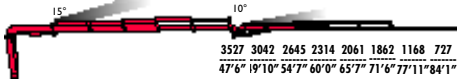


F385AC.2.24	257350	34'11"	22'11"	430	35044	4500	16-21	50	9898	8'3"	4'2"	7'11"
F385AC.2.25	254385	41'11"	30'2"	430	35044	4500	16-21	50	10449	8'3"	4'2"	7'11"
F385AC.2.2 6	247007	49'0"	36'10"	430	35044	4500	16-21	50	11000	8'3"	4'2"	7'11"

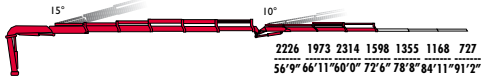
F385A.2.24 L323



F385A.2.24 L324



F385A.2.25 L323



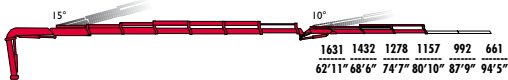
F385A.2.25 L324



F385A.2.26 L212



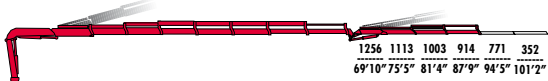
F385A.2.26 L213



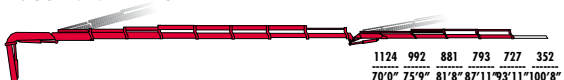
F385A.2.26 L214



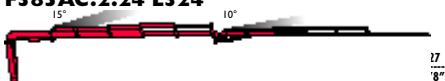
F385A.2.27 L153



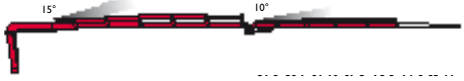
F385A.2.27 L154



F385AC.2.24 L324



F385AC.2.25 L324



F385A.2.24 L323	255831	65'5"	41'4"	430	35044	4500	16-21	50	11750	8'4"	4'9"	8'6"
F385A.2.24 L324	255831	71'8"	47'2"	430	35044	4500	16-21	50	11970	8'4"	4'9"	8'6"
F385A.2.25 L323	249177	72'8"	48'6"	430	35044	4500	16-21	50	12301	8'4"	4'9"	8'6"
F385A.2.25 L324	249177	78'10"	54'5"	430	35044	4500	16-21	50	12522	8'4"	4'9"	8'6"
F385A.2.26 L212	245488	74'5"	51'0"	430	35044	4500	16-21	50	12522	8'4"	4'9"	8'8"
F385A.2.26 L213	245488	81'0"	57'4"	430	35044	4500	16-21	50	12698	8'4"	4'9"	8'8"
F385A.2.26 L214	245488	87'9"	63'11"	430	35044	4500	16-21	50	12852	8'4"	4'9"	8'8"
F385A.2.27 L153	241076	87'3"	63'7"	430	35044	4500	16-21	50	12830	8'4"	4'9"	8'8"
F385A.2.27 L154	241076	93'11"	70'0"	430	35044	4500	16-21	50	12985	8'4"	4'9"	8'8"
F385AC.2.24 L324	257350	66'3"	44'7"	430	35044	4500	16-21	50	11772	8'4"	4'9"	8'6"
F385AC.2.25 L324	254385	73'5"	51'10"	430	35044	4500	16-21	50	12323	8'4"	4'9"	8'6"



STANDARD

ADC

Automatic
Dynamic Control

control

D850

Digital Multifunction
Distributor Bank

control

RCH/RCS

Radio Remote
Control

control

FX800

Faxi Electronic
Control

control

FSC

Faxi Stability
Control

control

CPM

Crane Position
Monitoring

control

FS

Flow Sharing

performance

XF

Extra Fast

performance

MPES

Multi Power
Extension System

performance

FL

Full Lift

performance

PROLINK

Progressive
Link

performance

UHSS

Ultra High
Strength Steel

strength

FWD

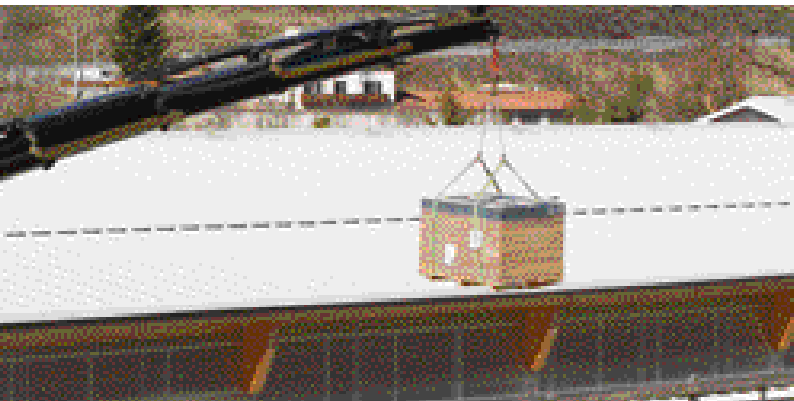
Fewer Welds
Design

strength

CQ

Cast Quality

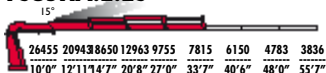
strength



F385RA.2.22



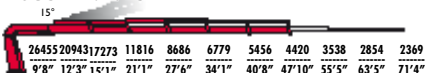
F385RA.2.23



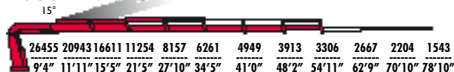
F385RA.2.24



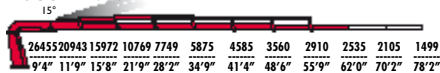
F385RA.2.25



F385RA.2.26



F385RA.2.27



F385RA.2.28



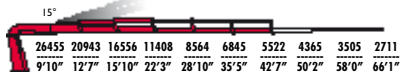
F385RA.2.22	280206	26'8"	12'5"	360	32535	4500	16-21	53	8994	8'1"	4'5"	8'0"
F385RA.2.23	272033	33'7"	19'0"	360	32535	4500	16-21	53	9545	8'1"	4'7"	8'0"
F385RA.2.24	267621	40'6"	25'7"	360	32535	4500	16-21	53	10097	8'1"	4'7"	8'0"
F385RA.2.25	261039	47'10"	32'9"	360	32535	4500	16-21	53	10648	8'1"	4'7"	8'0"
F385RA.2.26	255831	54'11"	39'4"	360	32535	4500	16-21	53	11199	8'2"	4'7"	8'0"
F385RA.2.27	251419	62'4"	46'3"	360	32535	4500	16-21	53	11530	8'2"	4'9"	8'0"
F385RA.2.28	249972	68'8"	52'11"	360	32535	4500	16-21	53	11860	8'3"	4'9"	8'0"



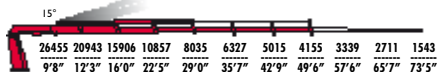
F385RAC.2.24



F385RAC.2.25

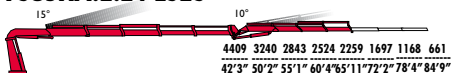


F385RAC.2.26



F385RAC.2.24	267621	35'1"	22'11"	360	32535	4500	16-21	53	9898	8'1"	4'7"	8'0"
F385RAC.2.25	264728	42'7"	29'6"	360	32535	4500	16-21	53	10449	8'1"	4'7"	8'0"
F385RAC.2.26	257350	49'6"	36'8"	360	32535	4500	16-21	53	11000	8'2"	4'7"	8'0"

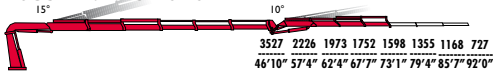
F385RA.2.24 L323



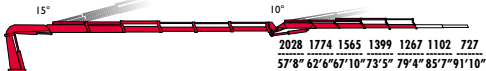
F385RA.2.24 L324



F385RA.2.25 L323



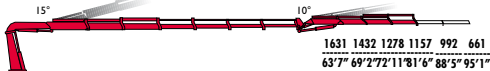
F385RA.2.25 L324



F385RA.2.26 L212



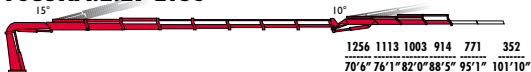
F385RA.2.26 L213



F385RA.2.26 L214



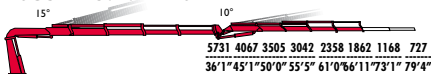
F385RA.2.27 L153



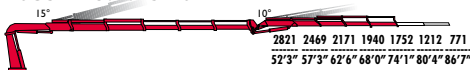
F385RA.2.27 L154



F385RAC.2.24 L324



F385RAC.2.25 L324



F385RA.2.24 L323	267621	65'11"	41'4"	360	32535	4500	16-21	53	11750	8'4"	5'2"	8'7"
F385RA.2.24 L324	267621	72'2"	47'2"	360	32535	4500	16-21	53	11970	8'4"	5'2"	8'7"
F385RA.2.25 L323	261039	73'1"	48'6"	360	32535	4500	16-21	53	12301	8'4"	5'2"	8'7"
F385RA.2.25 L324	261039	79'4"	54'5"	360	32535	4500	16-21	53	12522	8'4"	5'2"	8'7"
F385RA.2.26 L212	255831	74'11"	51'0"	360	32535	4500	16-21	53	12522	8'4"	5'2"	8'9"
F385RA.2.26 L213	255831	81'6"	57'4"	360	32535	4500	16-21	53	12698	8'4"	5'2"	8'9"
F385RA.2.26 L214	255831	87'9"	63'3"	360	32535	4500	16-21	53	12852	8'4"	5'2"	8'9"
F385RA.2.27 L153	251419	87'11"	63'7"	360	32535	4500	16-21	53	12830	8'4"	5'5"	8'9"
F385RA.2.27 L154	251419	93'11"	69'6"	360	32535	4500	16-21	53	12985	8'4"	5'5"	8'9"
F385RAC.2.24 L324	264728	66'11"	45'11"	360	32535	4500	16-21	53	11772	8'4"	5'2"	8'6"
F385RAC.2.25 L324	264728	74'1"	51'10"	360	32535	4500	16-21	53	12323	8'4"	5'2"	8'6"



STANDARD

ADC

Automatic
Dynamic Control

control

D850

Digital Multifunction
Distributor Bank

control

RCH/RCS

Radio Remote
Control

control

FX800

Faxi Electronic
Control

control

FSC

Faxi Stability
Control

control

CPM

Crane Position
Monitoring

control

FS

Flow Sharing

performance

XF

Extra Fast

performance

MPES

Multi Power
Extension System

performance

FL

Full Lift

performance

PROLINK

Progressive
Link

performance

UHSS

Ultra High
Strength Steel

strength

FWD

Fewer Welds
Design

strength

CQ

Cast Quality

strength

RPS

Rack and Pinion
System

strength



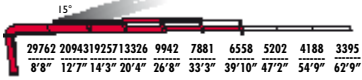
F415A.2.22



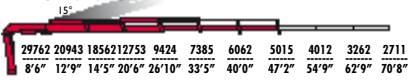
F415A.2.23



F415A.2.24



F415A.2.25



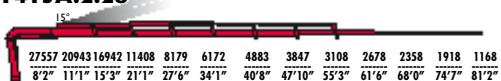
F415A.2.26



F415A.2.27



F415A.2.28



F415A.2.22	291273	26'4"	12'5"	430	35044	4500	16-21	50	9259	8'3"	4'0"	7'11"
F415A.2.23	278687	32'11"	19'0"	430	35044	4500	16-21	50	9810	8'3"	4'2"	7'11"
F415A.2.24	274999	39'10"	25'7"	430	35044	4500	16-21	50	10361	8'3"	4'2"	7'11"
F415A.2.25	267621	47'4"	32'9"	430	35044	4500	16-21	50	10912	8'3"	4'2"	7'11"
F415A.2.26	263932	54'3"	39'4"	430	35044	4500	16-21	50	11463	8'3"	4'2"	7'11"
F415A.2.27	259520	61'10"	46'3"	430	35044	4500	16-21	50	11794	8'3"	4'4"	7'11"
F415A.2.28	258797	68'2"	52'11"	430	35044	4500	16-21	50	12125	8'3"	4'4"	7'11"



F415AC.2.24



F415AC.2.25

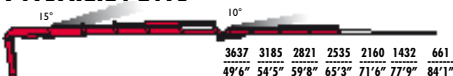


F415AC.2.26

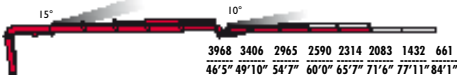


F415AC.2.24	275722	34'7"	22'11"	430	35044	4500	16-21	50	10163	8'3"	4'2"	7'11"
F415AC.2.25	271310	41'11"	30'2"	430	35044	4500	16-21	50	10714	8'3"	4'2"	7'11"
F415AC.2.26	264728	49'0"	36'10"	430	35044	4500	16-21	50	11265	8'3"	4'2"	7'11"

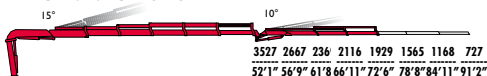
F415A.2.24 L413



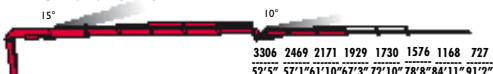
F415A.2.24 L414



F415A.2.25 L323



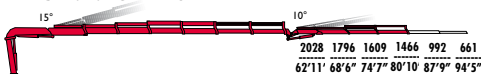
F415A.2.25 L324



F415A.2.26 L212



F415A.2.26 L213



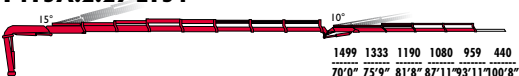
F415A.2.26 L214



F415A.2.27 L153



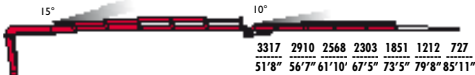
F415A.2.27 L154



F415AC.2.24 L414



F415AC.2.25 L324



F415A.2.24 L413	274999	65'5"	41'4"	430	35044	4500	16-21	50	12015	8'4"	4'9"	8'6"
F415A.2.24 L414	274999	71'8"	47'2"	430	35044	4500	16-21	50	12235	8'4"	4'9"	8'6"
F415A.2.25 L323	267621	72'8"	48'6"	430	35044	4500	16-21	50	12566	8'4"	4'9"	8'6"
F415A.2.25 L324	267621	78'8"	54'5"	430	35044	4500	16-21	50	12786	8'4"	4'9"	8'6"
F415A.2.26 L212	263932	74'3"	51'0"	430	35044	4500	16-21	50	12786	8'4"	4'9"	8'8"
F415A.2.26 L213	263932	80'10"	57'4"	430	35044	4500	16-21	50	12963	8'4"	4'9"	8'8"
F415A.2.26 L214	263932	87'1"	63'9"	430	35044	4500	16-21	50	13117	8'4"	4'9"	8'8"
F415A.2.27 L153	259520	87'3"	63'7"	430	35044	4500	16-21	50	13095	8'4"	4'8"	8'8"
F415A.2.27 L154	259520	93'11"	70'0"	430	35044	4500	16-21	50	13249	8'4"	4'8"	8'8"
F415AC.2.24 L414	275722	66'3"	44'7"	430	35044	4500	16-21	50	12037	8'4"	4'9"	8'7"
F415AC.2.25 L324	271310	73'5"	51'10"	430	35044	4500	16-21	50	12588	8'4"	4'9"	8'6"



STANDARD

ADC

Automatic
Dynamic Control

control

D850

Digital Multifunction
Distributor Bank

control

RCH/RCS

Radio Remote
Control

control

FX800

Fasi Electronic
Control

control

FSC

Fasi Stability
Control

control

CPM

Crane Position
Monitoring

control

FS

Flow Sharing

performance

XF

Extra Fast

performance

MPES

Multi Power
Extension System

performance

FL

Full Lift

performance

PROLINK

Progressive
Link

performance

UHSS

Ultra High
Strength Steel

strength

FWD

Fewer Welds
Design

strength

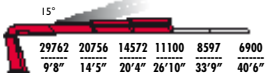
CQ

Cast Quality

strength



F415RA.2.22



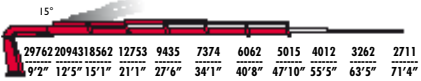
F415RA.2.23



F415RA.2.24



F415RA.2.25



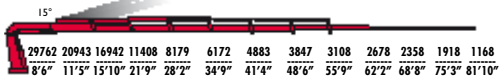
F415RA.2.26



F415RA.2.27



F415RA.2.28



F415RA.2.22	299374	26'10"	12'5"	360	32535	4500	16-21	53	9259	8'1"	4'5"	8'0"
F415RA.2.23	291996	33'7"	19'0"	360	32535	4500	16-21	53	9810	8'1"	4'7"	8'0"
F415RA.2.24	287584	40'6"	25'7"	360	32535	4500	16-21	53	10361	8'1"	4'7"	8'0"
F415RA.2.25	280206	47'10"	32'9"	360	32535	4500	16-21	53	10912	8'1"	4'7"	8'0"
F415RA.2.26	275722	54'11"	39'4"	360	32535	4500	16-21	53	11463	8'2"	4'7"	8'0"
F415RA.2.27	271310	62'4"	46'3"	360	32535	4500	16-21	53	11794	8'2"	4'9"	8'0"
F415RA.2.28	269863	68'8"	52'11"	360	32535	4500	16-21	53	12125	8'3"	4'9"	8'0"



F4 I 5RAC.2.24



F4 I 5RAC.2.25

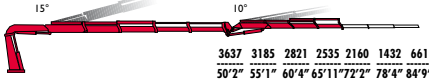


F4 I 5RAC.2.26

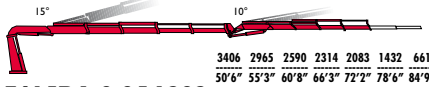


F4 I 5RAC.2.24	287584	35'1"	22'11"	360	32535	4500	16-21	53	10163	8'1"	4'7"	8'0"
F4 I 5RAC.2.25	283100	42'7"	29'6"	360	32535	4500	16-21	53	10714	8'1"	4'7"	8'0"
F4 I 5RAC.2.26	277964	49'6"	36'10"	360	32535	4500	16-21	53	11265	8'2"	4'7"	8'0"

F415RA.2.24 L413



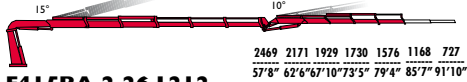
F415RA.2.24 L414



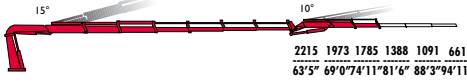
F415RA.2.25 L323



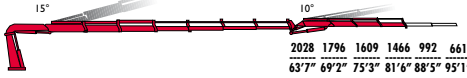
F415RA.2.25 L324



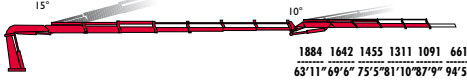
F415RA.2.26 L212



F415RA.2.26 L213



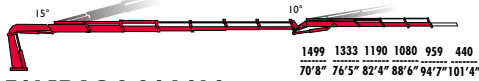
F415RA.2.26 L214



F415RA.2.27 L153



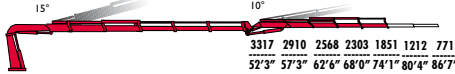
F415RA.2.27 L154



F415RAC.2.24 L414



F415RAC.2.25 L324



“L”
SERIE



F415RA.2.24 L413	287584	65'11"	42'11"	360	32535	4500	16-21	53	12015	8'4"	5'2"	8'7"
F415RA.2.24 L414	287584	72'2"	47'2"	360	32535	4500	16-21	53	12235	8'4"	5'2"	8'7"
F415RA.2.25 L323	280206	73'1"	48'6"	360	32535	4500	16-21	53	12566	8'4"	5'2"	8'7"
F415RA.2.25 L324	280206	79'4"	54'5"	360	32535	4500	16-21	53	12786	8'4"	5'2"	8'7"
F415RA.2.26 L212	275722	74'11"	51'0"	360	32535	4500	16-21	53	12786	8'4"	5'2"	8'9"
F415RA.2.26 L213	275722	81'6"	57'4"	360	32535	4500	16-21	53	12963	8'4"	5'2"	8'9"
F415RA.2.26 L214	275722	87'9"	63'3"	360	32535	4500	16-21	53	13117	8'4"	5'2"	8'9"
F415RA.2.27 L153	271310	87'11"	63'7"	360	32535	4500	16-21	53	13095	8'4"	5'5"	8'9"
F415RA.2.27 L154	271310	93'11"	69'6"	360	32535	4500	16-21	53	13249	8'4"	5'5"	8'9"
F415RAC.2.24 L414	287584	66'11"	44'7"	360	32535	4500	16-21	53	12037	8'4"	5'2"	8'7"
F415RAC.2.25 L324	283100	74'1"	51'10"	360	32535	4500	16-21	53	12588	8'4"	5'2"	8'6"



STANDARD

ADC

Automatic
Dynamic Control

control

D850

Digital Multifunction
Distributor Bank

control

RCH/RCS

Radio Remote
Control

control

FX800

Faxi Electronic
Control

control

FSC

Faxi Stability
Control

control

CPM

Crane Position
Monitoring

control

FS

Flow Sharing

performance

XF

Extra Fast

performance

MPES

Multi Power
Extension System

performance

XP

Extra Power

performance

FL

Full Lift

performance

PROLINK

Progressive
Link

performance

UHSS

Ultra High
Strength Steel

strength

FWD

Fewer Welds
Design

strength

CQ

Cast Quality

strength

RPS

Rack and Pinion
System

strength



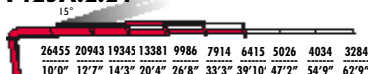
F425A.2.22



F425A.2.23



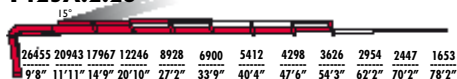
F425A.2.24



F425A.2.25



F425A.2.26



F425A.2.27



F425A.2.28



F425A.2.22	292720	26'2"	12'5"	430	35044	4790	16-21	50	8994	8'3"	4'0"	7'11"
F425A.2.23	280206	33'1"	19'0"	430	35044	4790	16-21	50	9545	8'3"	4'2"	7'11"
F425A.2.24	275722	39'10"	25'7"	430	35044	4790	16-21	50	10097	8'3"	4'2"	7'11"
F425A.2.25	269140	47'4"	32'9"	430	35044	4790	16-21	50	10648	8'3"	4'2"	7'11"
F425A.2.26	265451	54'3"	39'4"	430	35044	4790	16-21	50	11199	8'3"	4'2"	7'11"
F425A.2.27	261039	61'10"	46'3"	430	35044	4790	16-21	50	11530	8'3"	4'4"	7'11"
F425A.2.28	259520	68'2"	52'11"	430	35044	4790	16-21	50	11860	8'3"	4'4"	7'11"



F425AC.2.24



F425AC.2.25

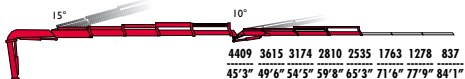


F425AC.2.26

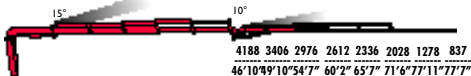


F425AC.2.24	276518	34'11"	22'11"	430	35044	4790	16-21	50	9898	8'3"	4'2"	7'11"
F425AC.2.25	272829	41'11"	30'2"	430	35044	4790	16-21	50	10449	8'3"	4'2"	7'11"
F425AC.2.26	267621	49'0"	36'10"	430	35044	4790	16-21	50	11000	8'3"	4'2"	7'11"

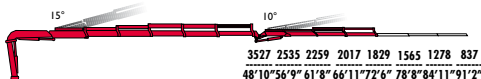
F425A.2.24 L323



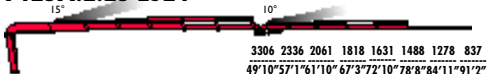
F425A.2.24 L324



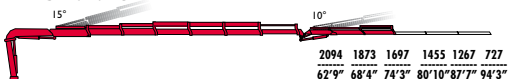
F425A.2.25 L323



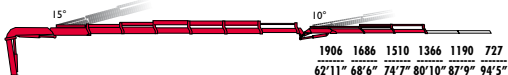
F425A.2.25 L324



F425A.2.26 L212



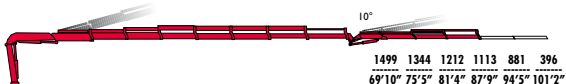
F425A.2.26 L213



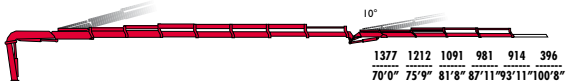
F425A.2.26 L214



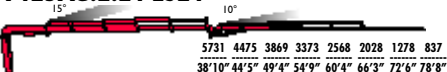
F425A.2.27 L153



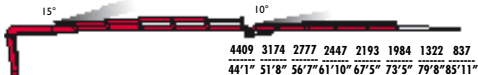
F425A.2.27 L154



F425AC.2.24 L324



F425AC.2.25 L324



F425A.2.24 L323	275722	65'5"	41'4"	430	35044	4790	16-21	50	11750	8'4"	4'9"	8'6"
F425A.2.24 L324	275722	71'8"	47'2"	430	35044	4790	16-21	50	11970	8'4"	4'9"	8'6"
F425A.2.25 L323	269140	72'8"	48'6"	430	35044	4790	16-21	50	12301	8'4"	4'9"	8'6"
F425A.2.25 L324	269140	78'10"	54'5"	430	35044	4790	16-21	50	12522	8'4"	4'9"	8'6"
F425A.2.26 L212	265451	74'5"	51'0"	430	35044	4790	16-21	50	12522	8'4"	4'9"	8'6"
F425A.2.26 L213	265451	81'0"	57'4"	430	35044	4790	16-21	50	12698	8'4"	4'9"	8'8"
F425A.2.26 L214	265451	87'9"	63'11"	430	35044	4790	16-21	50	12852	8'4"	4'9"	8'8"
F425A.2.27 L153	261039	87'3"	63'7"	430	35044	4790	16-21	50	12830	8'4"	4'9"	8'8"
F425A.2.27 L154	261039	93'11"	70'0"	430	35044	4790	16-21	50	5890	8'4"	4'9"	8'8"
F425AC.2.24 L324	276518	66'3"	44'7"	430	35044	4790	16-21	50	25952	8'4"	4'9"	8'6"
F425AC.2.25 L324	272829	73'5"	51'10"	430	35044	33,0	16-21	50	5590	8'4"	4'9"	8'6"



STANDARD

ADC

Automatic
Dynamic Control

control

D850

Digital Multifunction
Distributor Bank

control

RCH/RCS

Radio Remote
Control

control

FX800

Faxi Electronic
Control

control

FSC

Faxi Stability
Control

control

CPM

Crane Position
Monitoring

control

FS

Flow Sharing

performance

XF

Extra Fast

performance

MPES

Multi Power
Extension System

performance

XP

Extra Power

performance

FL

Full Lift

performance

PROLINK

Progressive
Link

performance

UHSS

Ultra High
Strength Steel

strength

FWD

Fewer Welds
Design

strength

CQ

Cast Quality

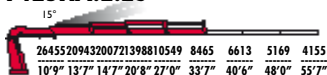
strength



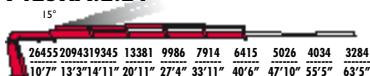
F425RA.2.22



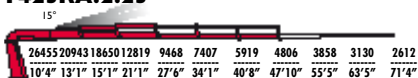
F425RA.2.23



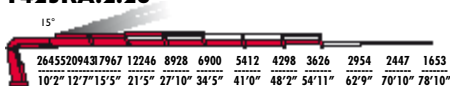
F425RA.2.24



F425RA.2.25



F425RA.2.26



F425RA.2.27



F425RA.2.28



F425RA.2.22	300097	26'10"	12'5"	360	32535	4790	16-21	53	8994	8'1"	4'5"	8'0"
F425RA.2.23	292720	33'7"	19'0"	360	32535	4790	16-21	53	9545	8'1"	4'7"	8'0"
F425RA.2.24	289031	40'6"	25'7"	360	32535	4790	16-21	53	10097	8'1"	4'7"	8'0"
F425RA.2.25	281653	47'10"	32'9"	360	32535	4790	16-21	53	10648	8'1"	4'7"	8'0"
F425RA.2.26	277241	54'11"	39'4"	360	32535	4790	16-21	53	11199	8'2"	4'7"	8'0"
F425RA.2.27	272033	62'4"	46'3"	360	32535	4790	16-21	53	11530	8'2"	4'9"	8'0"
F425RA.2.28	271310	68'8"	52'11"	360	32535	4790	16-21	53	11860	8'3"	4'9"	8'0"



F425RAC.2.24



F425RAC.2.25



F425RAC.2.26

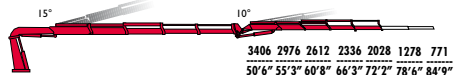


F425RAC.2.24	290477	35'1"	22'11"	360	32535	4790	16-21	53	9898	8'1"	4'7"	8'0"
F425RAC.2.25	286065	42'7"	29'6"	360	32535	4790	16-21	53	10449	8'1"	4'7"	8'0"
F425RAC.2.26	282376	49'6"	36'8"	360	32535	4790	16-21	53	11000	8'2"	4'7"	8'0"

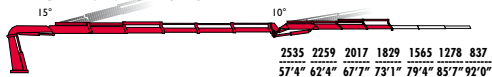
F425RA.2.24 L323



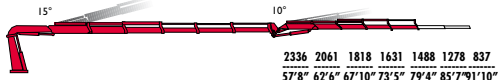
F425RA.2.24 L324



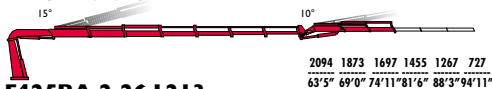
F425RA.2.25 L323



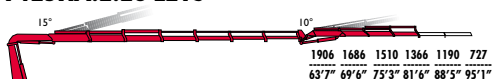
F425RA.2.25 L324



F425RA.2.26 L2 I2



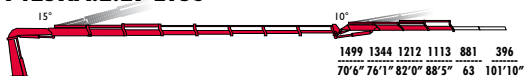
F425RA.2.26 L2 I3



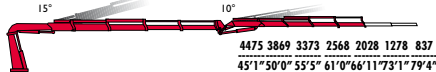
F425RA.2.26 L2 I4



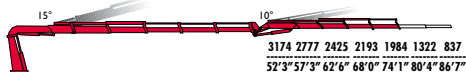
F425RA.2.27 LI 53



F425RAC.2.24 L324



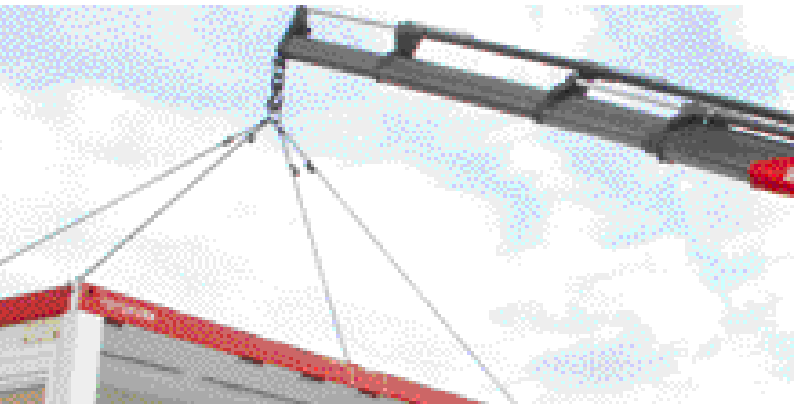
F425RAC.2.25 L324



“L”
SERIE



F425RA.2.24 L323	289031	65'11"	41'4"	360	32535	4790	16-21	53	11750	8'4"	5'2"	8'7"
F425RA.2.24 L324	289031	72'8"	47'2"	360	32535	4790	16-21	53	11970	8'4"	5'2"	8'7"
F425RA.2.25 L323	281653	73'1"	48'6"	360	32535	4790	16-21	53	12301	8'4"	5'2"	8'7"
F425RA.2.25 L324	281653	79'4"	54'5"	360	32535	4790	16-21	53	12522	8'4"	5'2"	8'7"
F425RA.2.26 L2 I2	277241	22,85	51'0"	360	32535	4790	16-21	53	12522	8'4"	5'2"	8'9"
F425RA.2.26 L2 I3	277241	24,85	57'4"	360	32535	4790	16-21	53	12698	8'4"	5'2"	8'9"
F425RA.2.26 L2 I4	277241	87'9"	63'3"	360	32535	4790	16-21	53	12852	8'4"	5'2"	8'9"
F425RA.2.27 LI 53	272033	28,60	63'7"	360	32535	4790	16-21	53	12830	8'4"	5'5"	8'9"
F425RAC.2.24 L324	290477	67'10"	45'11"	360	32535	4790	16-21	53	12103	8'4"	5'2"	8'6"
F425RAC.2.25 L324	286065	74'1"	51'10"	360	32535	4790	16-21	53	12323	8'4"	5'2"	8'6"



STANDARD

ADC

Automatic
Dynamic Control

control

D850

Digital Multifunction
Distributor Bank

control

RCH/RCS

Radio Remote
Control

control

FX800

Faxi Electronic
Control

control

FSC

Faxi Stability
Control

control

CPM

Crane Position
Monitoring

control

FS

Flow Sharing

performance

XF

Extra Fast

performance

MPES

Multi Power
Extension System

performance

XP

Extra Power

performance

FL

Full Lift

performance

PROLINK

Progressive
Link

performance

UHSS

Ultra High
Strength Steel

strength

FWD

Fewer Welds
Design

strength

CQ

Cast Quality

strength

RPS

Rack and Pinion
System

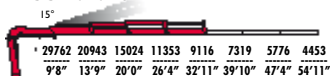
strength



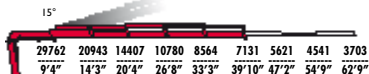
F455A.2.22



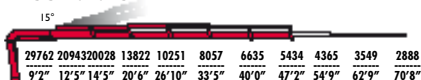
F455A.2.23



F455A.2.24



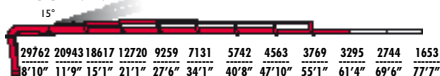
F455A.2.25



F455A.2.26



F455A.2.27



F455A.2.28



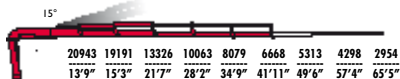
Model	Weight	Length 1	Length 2	Capacity 1	Capacity 2	Capacity 3	Capacity 4	Capacity 5	Capacity 6	Capacity 7	Capacity 8	Capacity 9	Capacity 10	Capacity 11	Capacity 12
F455A.2.22	314129	26'4"	12'5"	430	35044	4790	16-21	50	9259	8'3"	4'0"	7'11"			
F455A.2.23	300820	32'11"	19'0"	430	35044	4790	16-21	50	9810	8'3"	4'2"	7'11"			
F455A.2.24	298578	39'10"	25'7"	430	35044	4790	16-21	50	10361	8'3"	4'2"	7'11"			
F455A.2.25	289031	47'4"	32'9"	430	35044	4790	16-21	50	10912	8'3"	4'2"	7'11"			
F455A.2.26	285342	54'3"	39'4"	430	35044	4790	16-21	50	11463	8'3"	4'2"	7'11"			
F455A.2.27	280930	61'10"	46'3"	430	35044	4790	16-21	50	11794	8'3"	4'4"	7'11"			
F455A.2.28	280206	68'2"	52'11"	430	35044	4790	16-21	50	12125	8'3"	4'4"	7'11"			



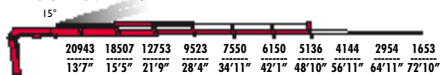
F455AC.2.24



F455AC.2.25

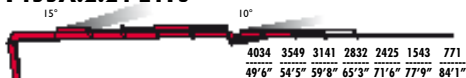


F455AC.2.26

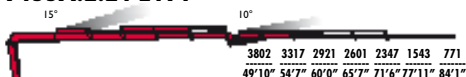


F455AC.2.24	296408	34'7"	22'11"	430	35044	4790	16-21	50	10163	8'3"	4'2"	7'11"
F455AC.2.25	292720	41'11"	30'2"	430	35044	4790	16-21	50	10714	8'3"	4'2"	7'11"
F455AC.2.26	285342	49'0"	36'10"	430	35044	4790	16-21	50	11265	8'3"	4'2"	7'11"

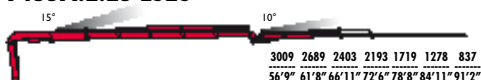
F455A.2.24 L413



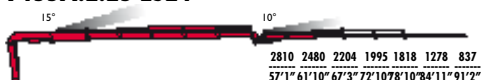
F455A.2.24 L414



F455A.2.25 L323



F455A.2.25 L324



F455A.2.26 L212



F455A.2.26 L213



F455A.2.26 L214



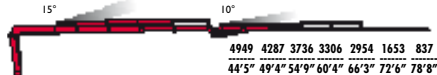
F455A.2.27 L153



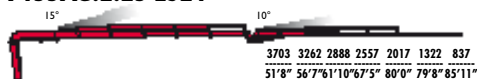
F455A.2.27 L154



F455AC.2.24 L414



F455AC.2.25 L324



F455A.2.24 L413	298578	65'5"	41'4"	430	35044	4790	16-21	50	12015	8'4"	4'9"	8'6"
F455A.2.24 L414	298578	71'8"	47'2"	430	35044	4790	16-21	50	12235	8'4"	4'9"	8'6"
F455A.2.25 L323	289031	72'8"	48'6"	430	35044	4790	16-21	50	5700	8'4"	4'9"	8'6"
F455A.2.25 L324	289031	78'8"	54'5"	430	35044	4790	16-21	50	12786	8'4"	4'9"	8'6"
F455A.2.26 L212	285342	74'3"	51'0"	430	35044	4790	16-21	50	12786	8'4"	4'9"	8'8"
F455A.2.26 L213	285342	81'0"	57'4"	430	35044	4790	16-21	50	12963	8'4"	4'9"	8'8"
F455A.2.26 L214	285342	87'9"	63'11"	430	35044	4790	16-21	50	13117	8'4"	4'9"	8'8"
F455A.2.27 L153	280930	87'3"	63'7"	430	35044	4790	16-21	50	13095	8'4"	4'9"	8'8"
F455A.2.27 L154	280930	93'11"	70'0"	430	35044	4790	16-21	50	13249	8'4"	4'9"	8'8"
F455AC.2.24 L414	296408	66'3"	44'7"	430	35044	4790	16-21	50	12037	8'4"	4'9"	8'7"
F455AC.2.25 L324	292720	73'5"	51'10"	430	35044	4790	16-21	50	12588	8'4"	4'9"	8'6"



STANDARD

ADC

Automatic Dynamic Control

control

D850

Digital Multifunction Distributor Bank

control

RCH/RCS

Radio Remote Control

control

FX800

Faxi Electronic Control

control

FSC

Faxi Stability Control

control

CPM

Crane Position Monitoring

control

FS

Flow Sharing

performance

XF

Extra Fast

performance

MPES

Multi Power Extension System

performance

XP

Extra Power

performance

FL

Full Lift

performance

PROLINK

Progressive Link

performance

UHSS

Ultra High Strength Steel

strength

FWD

Fewer Welds Design

strength

CQ

Cast Quality

strength



F455RA.2.22

15°

29762	20943	15685	11959	9281	7473
10'5"	14'5"	20'4"	26'10"	33'9"	40'6"

F455RA.2.23

15°

29762	20943	15024	11353	9116	7319	5776	4453
10'4"	14'5"	20'8"	27'0"	33'7"	40'6"	48'0"	55'7"

F455RA.2.24

15°

29762	20943	14407	10780	8564	7131	5621	4541	3703
10'0"	14'11"	20'11"	27'4"	33'11"	40'6"	47'10"	55'5"	63'5"

F455RA.2.25

15°

29762	20943	20028	13822	10273	8057	6635	5434	4365	3549	2888
9'10"	13'1"	15'1"	21'1"	27'6"	34'1"	40'8"	47'10"	55'5"	63'5"	71'4"

F455RA.2.26

15°

29762	20943	19323	13238	9788	7594	6128	4927	4177	3373	2821	1653
9'8"	12'7"	15'5"	21'5"	27'6"	34'1"	41'0"	48'2"	54'11"	62'9"	70'10"	78'10"

F455RA.2.27

15°

29762	20943	18617	12720	9259	7131	5742	4563	3769	3295	2744	1653
9'6"	12'5"	15'8"	21'9"	28'2"	34'9"	41'4"	48'6"	55'9"	62'0"	70'2"	78'2"

F455RA.2.28

15°

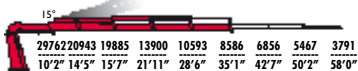
29762	20943	18353	12444	8994	6834	5445	4265	3461	2987	2634	2094	1322
9'2"	12'1"	15'10"	21'9"	28'2"	34'9"	41'4"	48'6"	55'9"	62'2"	68'8"	75'3"	81'10"



F455RA.2.22	321435	26'10"	12'5"	360	32535	4790	16-21	53	9259	8'1"	4'5"	8'0"
F455RA.2.23	310440	33'7"	19'0"	360	32535	4790	16-21	53	9810	8'1"	4'7"	8'0"
F455RA.2.24	312610	40'6"	25'7"	360	32535	4790	16-21	53	10361	8'1"	4'7"	8'0"
F455RA.2.25	302267	47'10"	32'9"	360	32535	4790	16-21	53	10912	8'1"	4'7"	8'0"
F455RA.2.26	297855	54'11"	39'4"	360	32535	4790	16-21	53	11463	8'2"	4'7"	8'0"
F455RA.2.27	293443	62'4"	46'3"	360	32535	4790	16-21	53	11794	8'2"	4'9"	8'0"
F455RA.2.28	291996	68'8"	52'11"	360	32535	4790	16-21	53	12125	8'3"	4'9"	8'0"



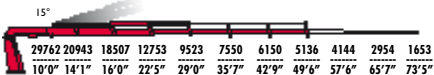
F455RAC.2.24



F455RAC.2.25



F455RAC.2.26



F455RAC.2.24	309645	35'1"	22'11"	360	32535	4790	16-21	53	10163	8'1"	4'7"	8'0"
F455RAC.2.25	305233	42'7"	29'6"	360	32535	4790	16-21	53	10714	8'1"	4'7"	8'0"
F455RAC.2.26	297855	49'6"	36'10"	360	32535	4790	16-21	53	11265	8'2"	4'7"	8'0"

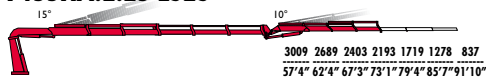
F455RA.2.24 L413



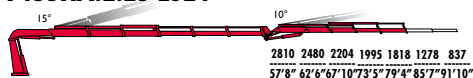
F455RA.2.24 L414



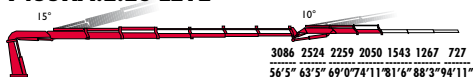
F455RA.2.25 L323



F455RA.2.25 L324



F455RA.2.26 L212



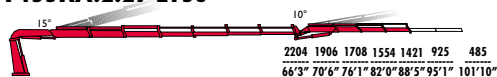
F455RA.2.26 L213



F455RA.2.26 L214



F455RA.2.27 L153



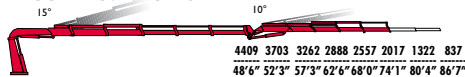
F455RA.2.27 L154



F455RAC.2.24 L414



F455RAC.2.25 L324



“L”
SERIE



F455RA.2.24 L413	312610	65'11"	41'4"	360	32535	4790	16-21	53	12015	8'4"	5'2"	8'7"
F455RA.2.24 L414	312610	72'2"	47'2"	360	32535	4790	16-21	53	12235	8'4"	5'2"	8'7"
F455RA.2.25 L323	302267	73'1"	48'6"	360	32535	4790	16-21	53	12566	8'4"	5'2"	8'7"
F455RA.2.25 L324	302267	79'4"	54'5"	360	32535	4790	16-21	53	12786	8'4"	5'2"	8'7"
F455RA.2.26 L212	297855	74'11"	51'0"	360	32535	4790	16-21	53	12786	8'4"	5'2"	8'9"
F455RA.2.26 L213	297855	81'6"	57'4"	360	32535	4790	16-21	53	12963	8'4"	5'2"	8'9"
F455RA.2.26 L214	297855	87'9"	63'3"	360	32535	4790	16-21	53	13117	8'4"	5'2"	8'9"
F455RA.2.27 L153	293443	87'11"	63'7"	360	32535	4790	16-21	53	13095	8'4"	5'5"	8'9"
F455RA.2.27 L154	293443	93'11"	69'6"	360	32535	4790	16-21	53	13249	8'4"	5'5"	8'9"
F455RAC.2.24 L414	309645	66'11"	44'7"	360	32535	4790	16-21	53	12037	8'4"	5'2"	8'7"
F455RAC.2.25 L324	305233	74'1"	51'10"	360	32535	4500	16-21	53	12588	8'4"	5'2"	8'6"

SYMBOLS



Lifting Capacity (lbs.ft)



Standard reach (ft)



Hydraulic extension (ft)



Rotation (°)



Rotation torque (lbs.ft)



Working pressure (psi)



Pump capacity (gpm)



Oil tank capacity (gal)



Crane weight (lbs)



Crane length (ft)



Crane width (ft)



Crane height (ft)



CRANES WITHOUT COMPROMISE



FASSI GRU S.p.A.

24021 Albino (Bergamo) ITALY - via Roma,110

Tel. +39 035 776400 - Fax +39 035 755020

<http://www.fassi.com>

e-mail: fassi@fassi.com