

FASSI CRANE

F 530AXP.24

use and maintenance

XP\.. DEVICE (EXTRA POWER)
FROM SERIAL NUMBER *3001*

INDEX OF PARAGRAPHS

A0	CLASSIFICATION OF THE CRANE MODEL
A0.1	Technical data
B0	XP DEVICES
B0.1	☹ XP/CR Device
B0.2	☹ XP/SR Device
B0.3	☹☹ Activation and instructions for use of the XP device
B0.4	XP/CR Device
B0.5	XP/SR Device
B0.6	Activation and instructions for use of the XP device
C0	☹☹ HYDRAULIC AND ELECTRIC SCHEMATICS FOR CRANE
C1	HYDRAULIC AND ELECTRIC SCHEMATICS FOR CRANE
D0	☹☹ CAPACITY PLATES FOR CRANE WITH LIFTING MOMENT LIMITING DEVICE

This supplementary use and maintenance Booklet is an up-date of the Use and Maintenance manual for the crane F480A supplied with the XP device on request.

(!) WARNING (!)

Some of the subjects contained are an integration of what reported in the manual; read carefully this supplementary manual paying attention to the paragraphes or contesst of the manual before operating the crane.

A0 CLASSIFICATION OF THE CRANE MODEL

The design of this crane has been carried out in respect of **DIN 15018** norms, fatigue test classification **H1B3**.

The crane can operate, intermittently, with lifting devices other than the hook.

The dimensions and the capacity of the implements must be proportioned with crane performances.

A0.1 Technical data

F 530AXP.24									
Lifting capacity	Standard reach	Hydraulic extension	Rotation arc	Rotation torque	Working pressure	Pump capacity	Oil tank capacity	Crane weight	Max. working pressure on the outrigger (Φ 210)
48,7 tm 477,7 kNm	12,00 m	7,55 m	360°	4,59 tm 45 kNm	32,5 MPa	70 l/min	200 l	5400 kg	59 daN/cm²

The XP/.. devices are for reactivation via radio remote control. They are installed on request on the cranes supplied with Danfoss distributors which, allow manual control or remote control (electric modulus).

The XP devices work on the principle of an increase in the lifting capacity of the crane with a reduction in the dynamic effect achieved with a reduction in the speed of certain movements.

B0.1 C € XP/CR device

The cranes supplied with this device have only one manual control station both on the cranes with ground controls and on the cranes with top seat controls. They are equipped with radio remote control and Danfoss distributors with electric modulus, a control panel and the visual indicator red/yellow light for the lifting moment limiting device.

Characteristics of the radio remote control

The cranes are equipped with a radio remote control complete with lever paddles proportional for the crane and the functions of starting/turning off the engine, the accelerator/decelerator of the engine, the emergency stop system, the start and the warning horn.

(!) WARNING (!)

First read the instructions given in the User's Manual supplied by the Manufacturer before using the remote control to avoid improper use.

Serial cable for the remote control

The radio remote control is easily transformable from radio to cable remote control using the supplied connecting cable, use in case of discharged battery or presence of interference on the transmission by radio or particular applications, or where it is necessary to use the cable control because the transmission by radio is forbidden.

Controls to operate the crane

See paragraph H0 of the F480A USE AND MAINTENANCE MANUAL for details of "Controls to operate the crane".

B0.2 C € XP/SR device




The cranes supplied with this device keep the control stations and the control panels in relation to the equipment and have the visual indicator red/yellow light for the lifting moment limiting device; the electric modulus are not supplied for the Danfoss distributor and the radio remote control.

(!) WARNING (!)

First read the instructions given in the User's Manual supplied by the Manufacturer before using the remote control to avoid improper use.

See paragraph H0 of the F480A USE AND MAINTENANCE MANUAL for details of "Controls to operate the crane".

B0.3 C€ Activation and instructions for use of the XP device (Valid on both types)

You operate on the SLOW/FAST selector ( - ) placed on the console of the radio remote control on the SLOW position (). With the selector set on this position you have the electric signals of the strokes of the console control keys, they come modified and interpreted from the electric controllers of the crane distributor segment which limits the strokes obtaining the reduction of the speed movements of the crane.

See paragraphes H1 of the F480A USE AND MAINTENANCE MANUAL for details of "Lifting moment limiting device"

(!) ATTENTION (!)

The rating plates relevant to the XP device are marked **F530AXP**.

(!) WARNING (!)

When the XP device is active, remember that:

- The crane rotates with a decreased speed, without increasing the rotation capacity (the maximum load that the crane can rotate remains unchanged).
- The Extension and Retraction of the extension rams of the crane (and of the hydraulic jib, if fitted) and
- the Up/Down stroke of the winch, if fitted. They are all possible without any reduction in speed (they produce negligible dynamic effect).

On cranes with a lifting moment limiting device for double working zones, manoeuvres within the "unstable" area are slower without any increase in the lifting capacity.

Visual indicator yellow/red light

On the radio remote control it is not possible to repeat the visual signals of intervention of the lifting moment limiting device, placed on the control panels next to each control station.

The crane is furnished of visual indicator signals of repetition, which has to be located in a visible position, on the crane structure or on the truck, indicates with:

- yellow light, 90% of the capacity (lifting moment) has been reached
- red light, the activation value of the lifting moment limiting device has been reached.

Instructions for use of the XP/V device

The XP device can be activated by the crane operator before or during manoeuvres to handle the load.

For example, it can be used:

- to exploit the reduction in the speed when moving a load that must be positioned with precision.
- to exploit the variation in the lifting moment limiting device adjustment parameters to exit from a critical situation when moving the load (yellow light or activation of the lifting moment limiting with the red light and block).

Switching on the XP device after the yellow light has come on

- the light goes off
- insisting with the manoeuvres that increase the lifting moment, you get the yellow and red lights again.

Switching on the XP device after the red light has come on (lifting moment limiting device block)

- A) The block continues:
- the crane must be reset by retracting the extension rams of the crane (with hydraulic jib, act on the retraction of the jib extension rams).
- B) The red light switches off and the yellow lights usually comes on.
- the crane controls are enabled. Acting with the manoeuvres that increase the lifting moment, you get the yellow and red lights again.

B0.4 XP/CR device

The cranes supplied with this device have only one manual control station both on the cranes with ground controls and on the cranes with top seat controls. They are equipped with a radio remote control and Danfoss electric modulus.

Characteristics of the radio remote control

The cranes are equipped with a radio remote control complete with lever paddles proportional for the crane and the functions of starting/turning off the engine, the accelerator/decelerator of the engine, the emergency stop system, the start and the warning horn.

(!) WARNING (!)

First read the instructions given in the User's Manual supplied by the Manufacturer before using the remote control to avoid improper use.

Serial cable for the remote control

The radio remote control is easily transformable from radio to cable remote control using the supplied connecting cable, use in case of discharged battery or presence of interference on the transmission by radio or particular applications, or where it is necessary to use the cable control because the transmission by radio is forbidden.

B0.5 XP/SR device




The cranes supplied with this device keep the control stations in relation to the equipments; the electric modulus are not supplied for the Danfoss distributor and the radio remote control.

(!) WARNING (!)

First read the instructions given in the User's Manual supplied by the Manufacturer before using the remote control to avoid improper use.

See paragraph H0 of the F480A USE AND MAINTENANCE MANUAL for details of "Controls to operate the crane".

B0.6 Activation and instructions for use of the XP device (Valid on both types)

You operate on the SLOW/FAST selector ( - ) placed on the console of the radio remote control on the SLOW position (). With the selector set on this position you have the electric signals of the strokes of the console control keys, they come modified and interpreted from the electric controllers of the crane distributor segment which limits the strokes obtaining the reduction of the speed movements of the crane.

See paragraphs H2 of the F480A USE AND MAINTENANCE MANUAL for details of "Lifting moment limiting device"

(!) ATTENTION (!)

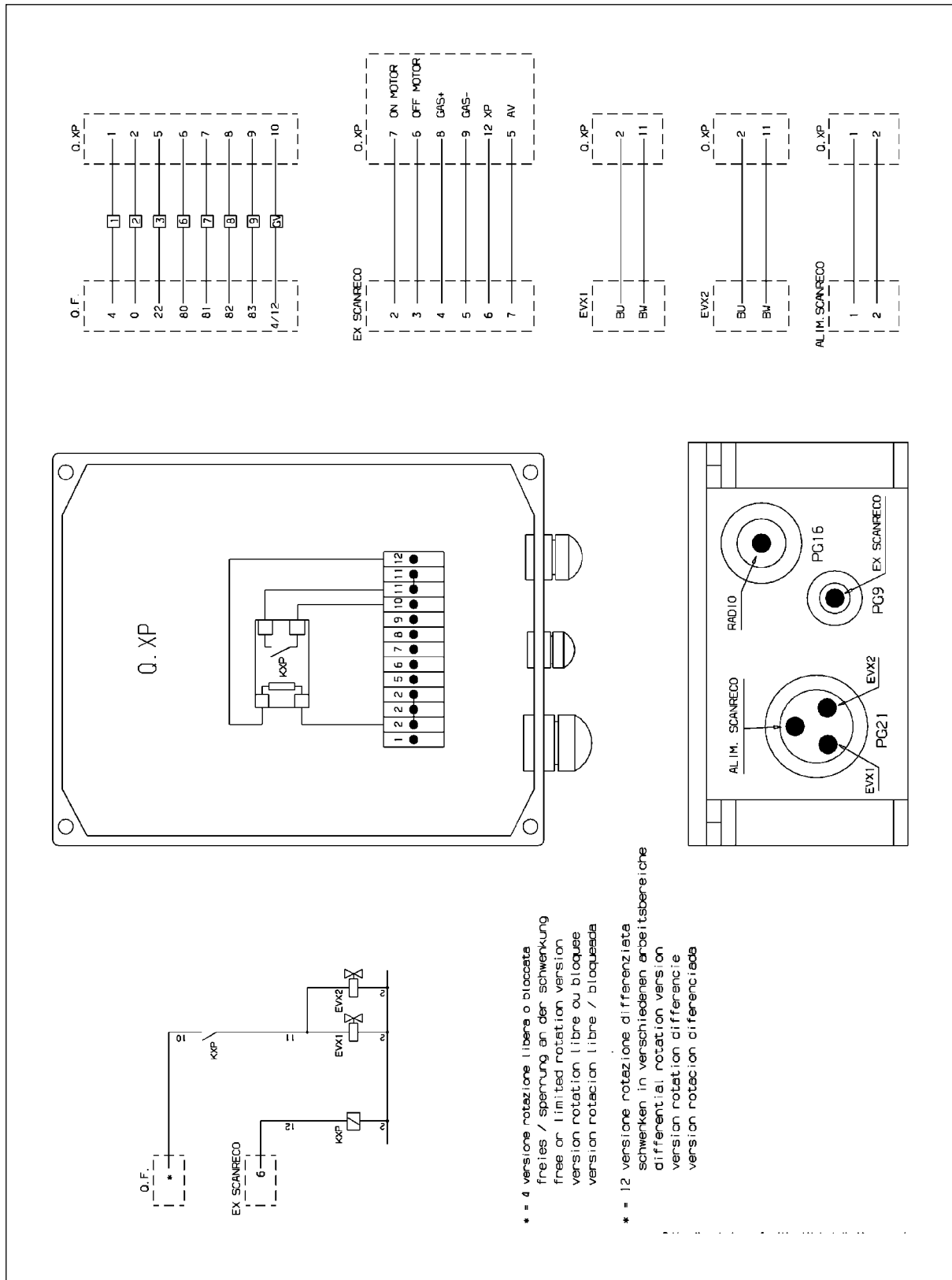
The rating plates relevant to the XP device are marked **F530AXP**.

(!) WARNING (!)

When the XP device is active, remember that:

- The crane rotates with a decreased speed, without increasing the rotation capacity (the maximum load that the crane can rotate remains unchanged).
- The Extension and Retraction of the extension rams of the crane (and of the hydraulic jib, if fitted) and
- the Up/Down stroke of the winch, if fitted. They are all possible without any reduction in speed (they produce negligible dynamic effect).

Electric schematic for crane - XP box for Scanreco radioremot control



C1 HYDRAULIC AND ELECTRIC SCHEMATICS FOR CRANE

Electric schematic for crane

D0 CE CAPACITY PLATES FOR CRANE WITH LIFTING MOMENT LIMITING DEVICE

CAPACITY PLATES FOR CRANE WITH LIFTING MOMENT LIMITING DEVICE
F 530AXP.24

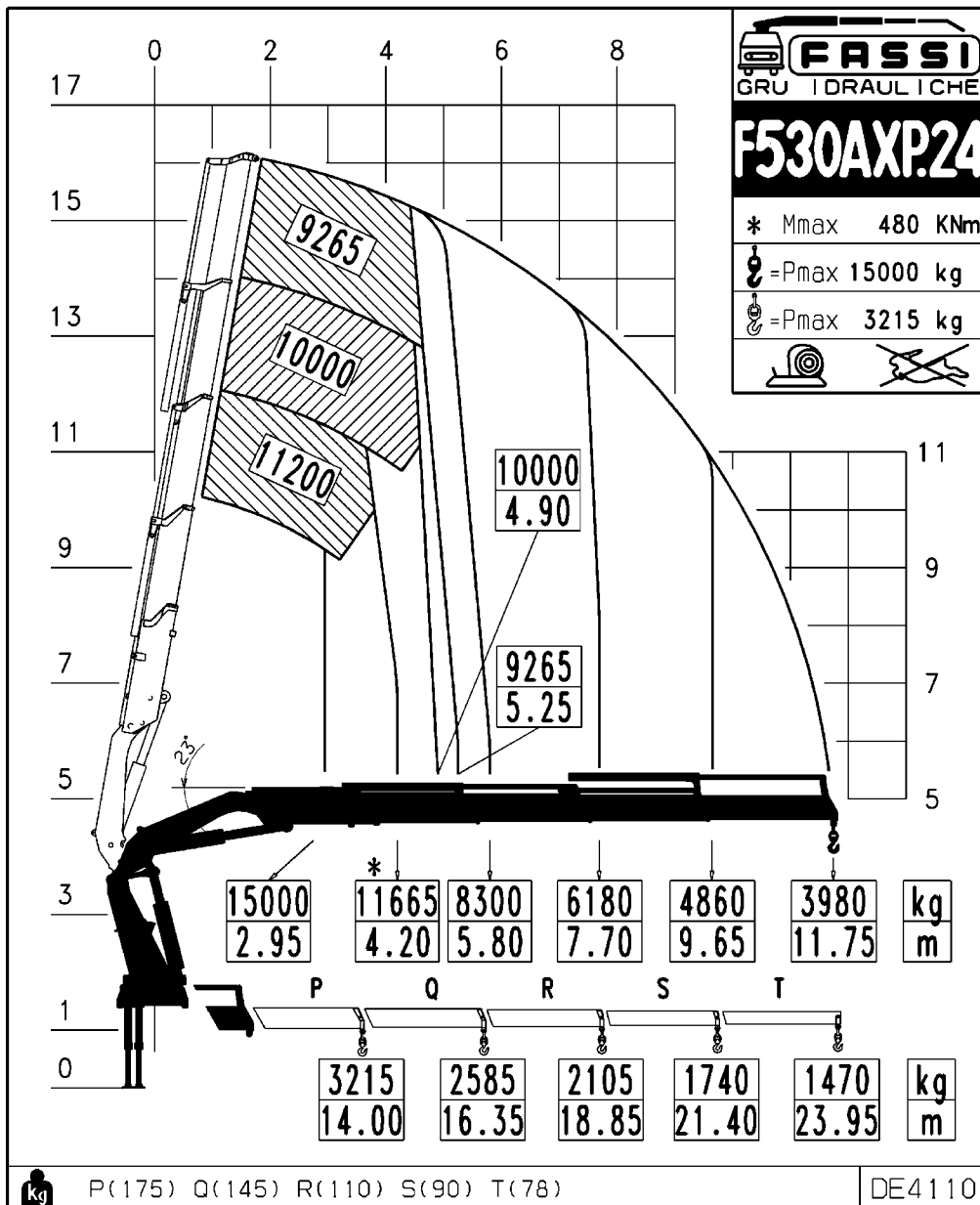
D0

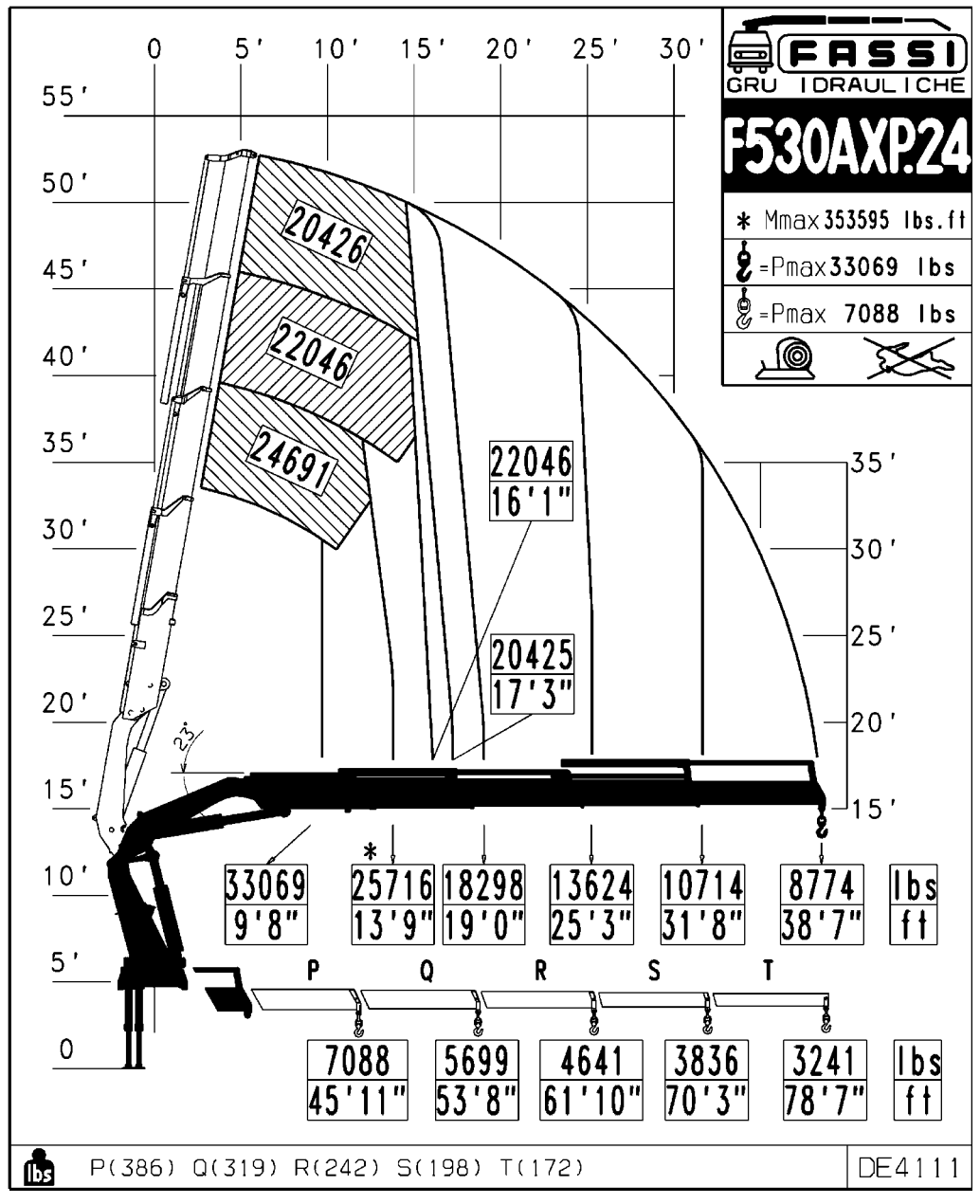
- For cranes and manual extensions.
- For cranes and manual extensions with winch.
- For hydraulic jib and manual extensions.
- For hydraulic jib and manual extensions with winch.

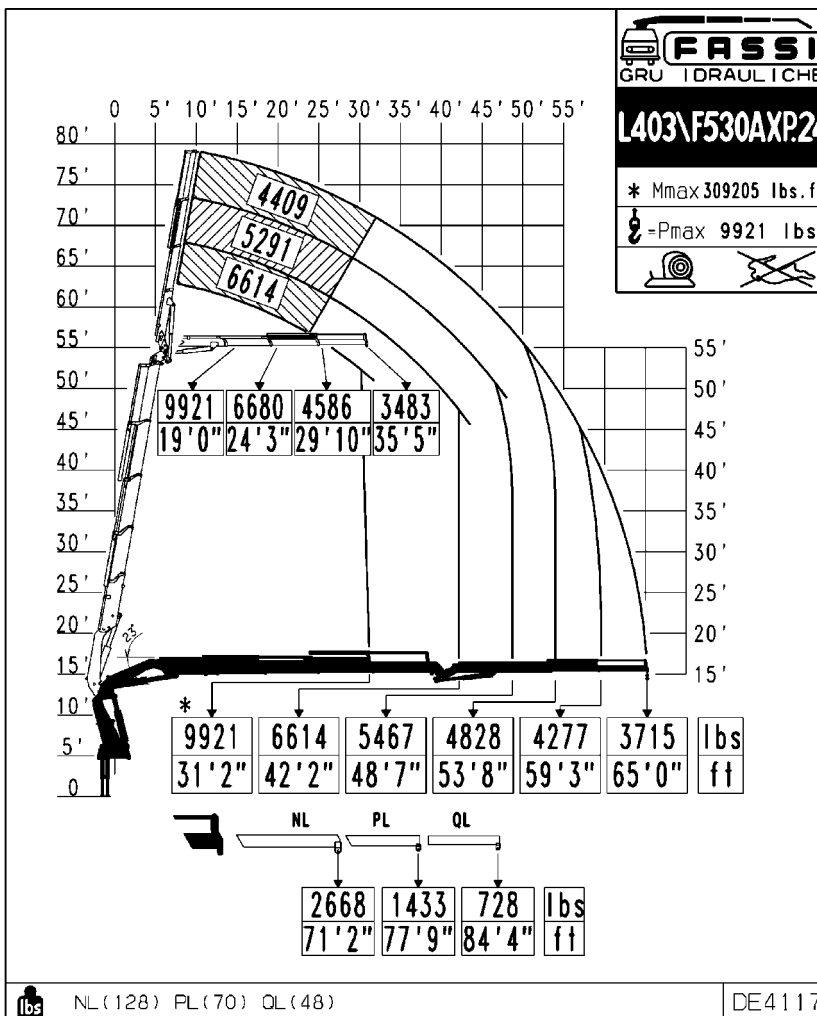
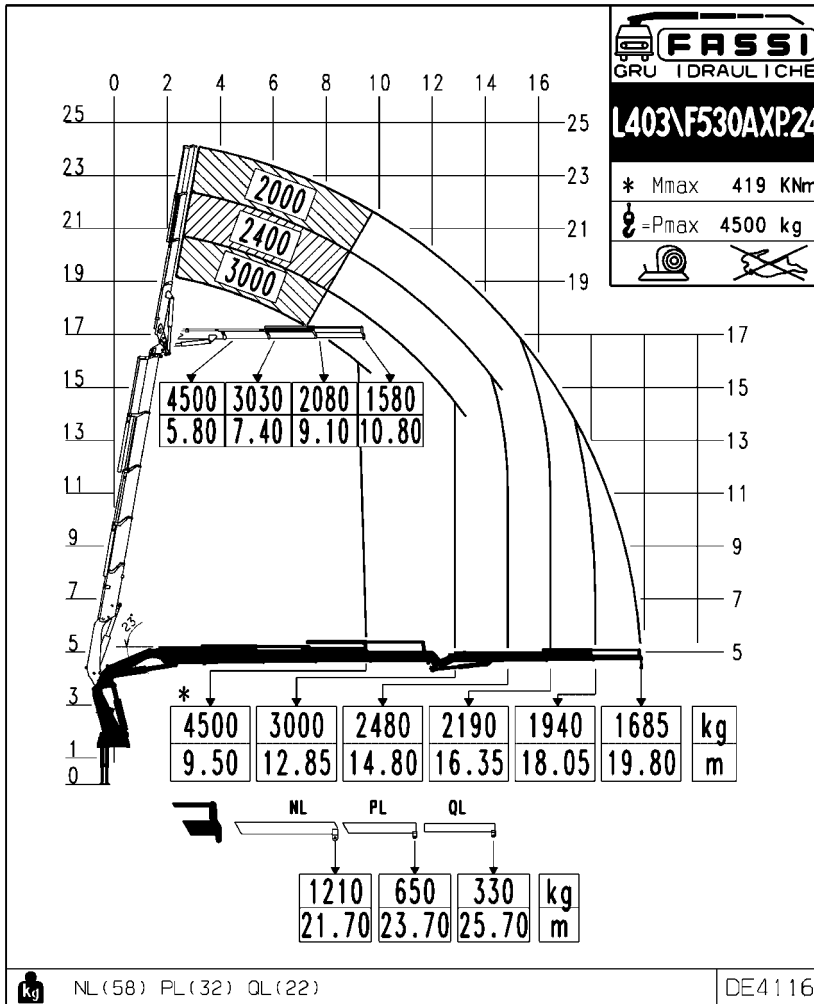
The represented plates refer to the nominal design capacities.

(!) WARNING (!)

If the capacities are downgraded or partially reduced (e.g. sector in front of vehicle cab) capacity plates must be applied in line with the final test figures.







D0

CAPACITY PLATES FOR
CRANE WITH LIFTING
MOMENT LIMITING DEVICE
F 530AXP.24

