

F 360BXP.24

use and maintenance

XP\.. DEVICE (EXTRA POWER)
FROM SERIAL NUMBER *4001*

INDEX OF PARAGRAPHS

A0	CLASSIFICATION OF THE CRANE MODEL
A0.1	Technical data
B0	XP DEVICES
B0.1	XP/V Device
B0.2	Activation and instructions for use of the XP/V device
B0.3	XP/CR Device
B0.4	Activation and instructions for use of the XP/CR device
C0	CAPACITY PLATES

This supplementary use and maintenance Booklet is an up-date of the Use and Maintenance manual for the crane F330B supplied with the XP device on request.

(!) WARNING (!)

Some of the subjects contained are an integration of what reported in the manual; read carefully this supplementary manual paying attention to the paragraphs or contents of the manual before operating the crane.

A0 CLASSIFICATION OF THE CRANE MODEL

The design of this crane has been carried out in respect of **DIN 15018** norms, fatigue test classification **H1B3**.

The crane can operate, intermittently, with lifting devices other than the hook.

The dimensions and the capacity of the implements must be proportioned with crane performances.

A0.1 Technical data

F 360BXP.24									
Lifting capacity	Standard reach	Hydraulic extension	Rotation arc	Rotation torque	Working pressure	Pump capacity	Oil tank capacity	Crane weight	Max. working pressure on the outrigger (Ø 210)
32,8 tm 321,66 kNm	12,20 m	7,70 m	400°	4,84 tm 47,46 kNm	33,0 MPa	50 l/min	180 l	3900 kg	44,2 daN/cm²

The XP device works on the principle of an increase in the lifting capacity of the crane with a reduction in the dynamic effect achieved with a reduction in the speed of certain movements.

The XP device can be used, not just to increase the capacity crane:

- but to exploit the reduction in the speed when moving a load that must be positioned with precision.
- and to exploit the variation in the lifting moment limiting device adjustment parameters to exit from a critical situation when moving the load (overcoming of the 90% or intervention of the lifting moment limiting device).

(!) ATTENTION (!)

The rating plates relevant to the XP device are marked F...XP.

B0.1 Device XP/V

It is installed on request on the cranes supplied with Hydrocontrol distributors.

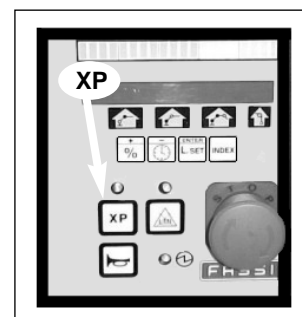
The cranes supplied with this device keep the control stations in relation to the equipments.

B0.2 Activation and instructions for use of the XP/V device

The XP/V device can be activated, by operating the XP on either control panels (fig. 1-2).

The activation of the **XP/V** device it's indicated with the illumination of the warning light placed on the XP button.

fig. 1



(!) WARNING (!)

It is recommended to release the crane controls (distributor levers in neutral position), before pushing the button to engage or disengage the **XP/V** device, because of the variation of speed is considerable and immediate; carefully operate the controls.

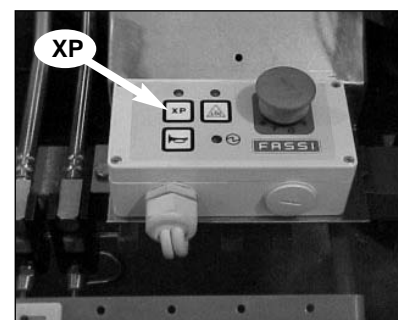
See paragraph 14 of the USE AND MAINTENANCE MANUAL for details of "Controls to operate the crane"

See paragraphs 16 of the USE AND MAINTENANCE MANUAL for details of "Lifting moment limiting device"

fig. 2

The activation of the XP/V device on cranes with free rotation or with rotation limiting device produces:

- an increase in the capacity of the crane
- a reduction in the speed of rotation without increasing the torque
- a reduction in the speed of lifting and lowering the inner boom, outer boom and of the jib boom (when fitted)
- speed of the extension booms, bucket and the rotator.
- allows normal speed and lifting capacity of the winch.



(!) WARNING (!)

When working the controls, if one of the two functions was a reduced speed, the speed reduction will affect the other one.

The activation of the XP/V device on cranes with lifting moment limiting device for two sectors produces:

- in the “stable” zone working area, the same effect for crane with free rotation
- in the “unstable” zone working area, a reduction in the speed without the increase in capacity.

Activation of the XP/V device when the 90% of the capacity has been reached

- the yellow light on the “led” band of the main control panel goes off
- insisting with the manoeuvres that increase the lifting moment, you get the yellow and red warning lights again.

Activation of the XP/V device after the lifting moment limiting device block**A) The block continues:**

- the crane must be reset

B) The red warning light switches off and the yellow warning light usually comes on.

- the crane controls are enabled. Acting with the manoeuvres that increase the lifting moment, you get the yellow and red warning lights again.

B0.3 XP/CR Device

It is installed on request on the cranes supplied with Danfoss distributors.

The cranes supplied with this device are equipped with radio remote control and have only one manual control station both on the cranes with ground controls and on the cranes with top seat controls, with a control panel and a visual indicator red/yellow light (light tower) for the lifting moment limiting device.

(!) WARNING (!)

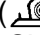
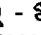

First read the instructions given in the User’s Manual supplied by the Manufacturer before using the remote control to avoid improper use.

You operate the XP/CR device only from the console of the radio remote control by using the appropriate selector.

Scanreco radio remote control

You operate on the XP/ON-XP/OFF selector (fig. 3) on the XP/ON position.

Hetronic radio remote control

To SLOW operation position the SLOW/FAST selector ( - ) (fig. 4) placed on the console of the radio remote control on the SLOW position ().

HBC radio remote control

To SLOW operation position the SLOW/FAST selector ( - ) (fig. 5) on the SLOW position ().

The activation of the **XP/CR** device it's indicated with the illumination of the warning light placed on the XP button of the control panel (fig. 1).

Note: the XP button on the control panel will not function.

Note: on radio remote controlled cranes the XP function can be activated from the remote control unit

(!) WARNING (!)

It is recommended to release the crane controls (levers of the control console in neutral position) before activating or deactivating the **XP/CR** device because of the variation of speed is considerable and immediate; carefully operate the controls.

See paragraph 14 of the USE AND MAINTENANCE MANUAL for details of "Controls to operate the crane"

See paragraphs 16 of the USE AND MAINTENANCE MANUAL for details of "Lifting moment limiting device"

The activation of the XP/CR device on cranes with free rotation or with rotation limiting device produces:

- an increase in the capacity of the crane
- a reduction in the speed of rotation without increasing the torque
- a reduction in the speed of lifting and lowering the inner boom, outer boom and of the jib boom (when fitted)
- speed of the extension booms, bucket and the rotator.
- allows normal speed and lifting capacity of the winch.

The activation of the XP/CR device on cranes with lifting moment limiting device for two sectors produces:

- in the "stable" zone working area, the same effect for crane with free rotation
- in the "unstable" zone working area, a reduction in the speed without the increase in capacity.

Activation of the XP/CR device when the 90% of the capacity has been reached

- the yellow light on the "led" band of the main control panel goes off
- insisting with the manoeuvres that increase the lifting moment, you get the yellow and red warning lights again.

SCANRECO RADIO REMOTE CONTROL

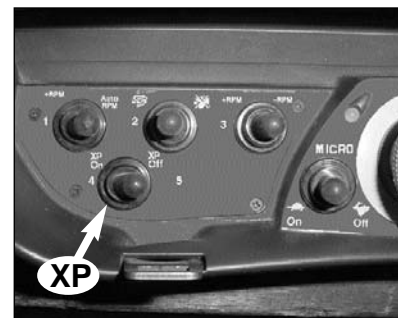


fig. 3

HETRONIC RADIO REMOTE CONTROL

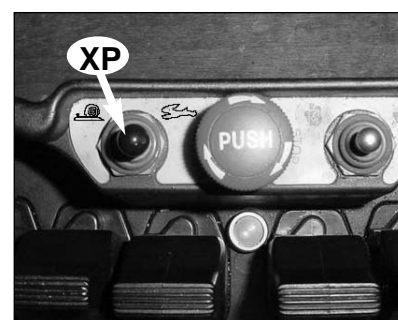


fig. 4

HBC RADIO REMOTE CONTROL

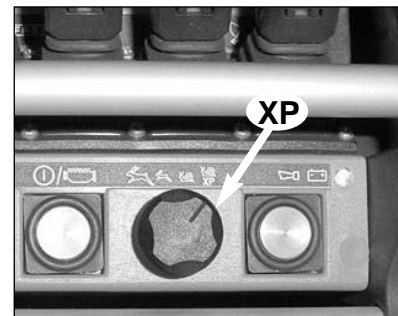


fig. 5

Activation of the XP/CR device after the lifting moment limiting device block

- A) The block continues:
 - the crane must be reset
- B) The red warning light switches off and the yellow warning light usually comes on.
 - the crane controls are enabled. Acting with the manoeuvres that increase the lifting moment, you get the yellow and red warning lights again.



fig. 6

Visual indicator yellow/red light

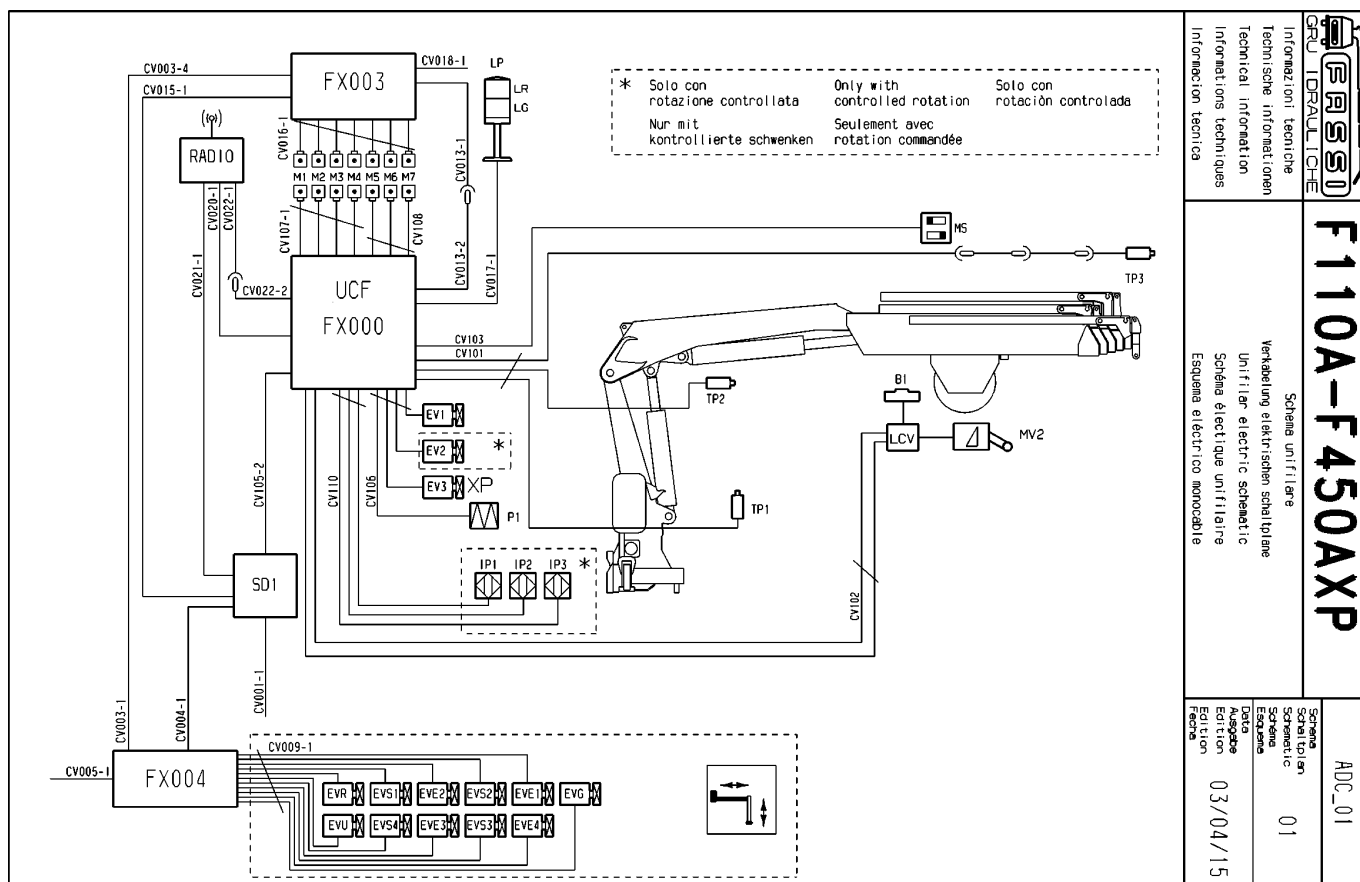
On the radio remote control it is not possible to repeat the visual signals of intervention of the lifting moment limiting device, placed on the control panel (fig. 1) next to the control station; the crane is furnished of visual indicator signals of repetition: yellow light (reachment of the 90%) and red light (intervention of the lifting moment limiting device). The visual indicator (fig. 6) is located in a visible position, on the crane structure or on the truck.

B1 IMC AND ADC DEVICES (if fitted)

The IMC (Integrated Machine Control) device is the connection of the three following devices:

- lifting moment limiting device "ELECTRONIC" (LME)
- ADC device
- radio remote control for the outriggers.

The ADC (Automatic Dynamic Control) device controls the dynamics of the movements providing the maximum speed available subject to the applied load.



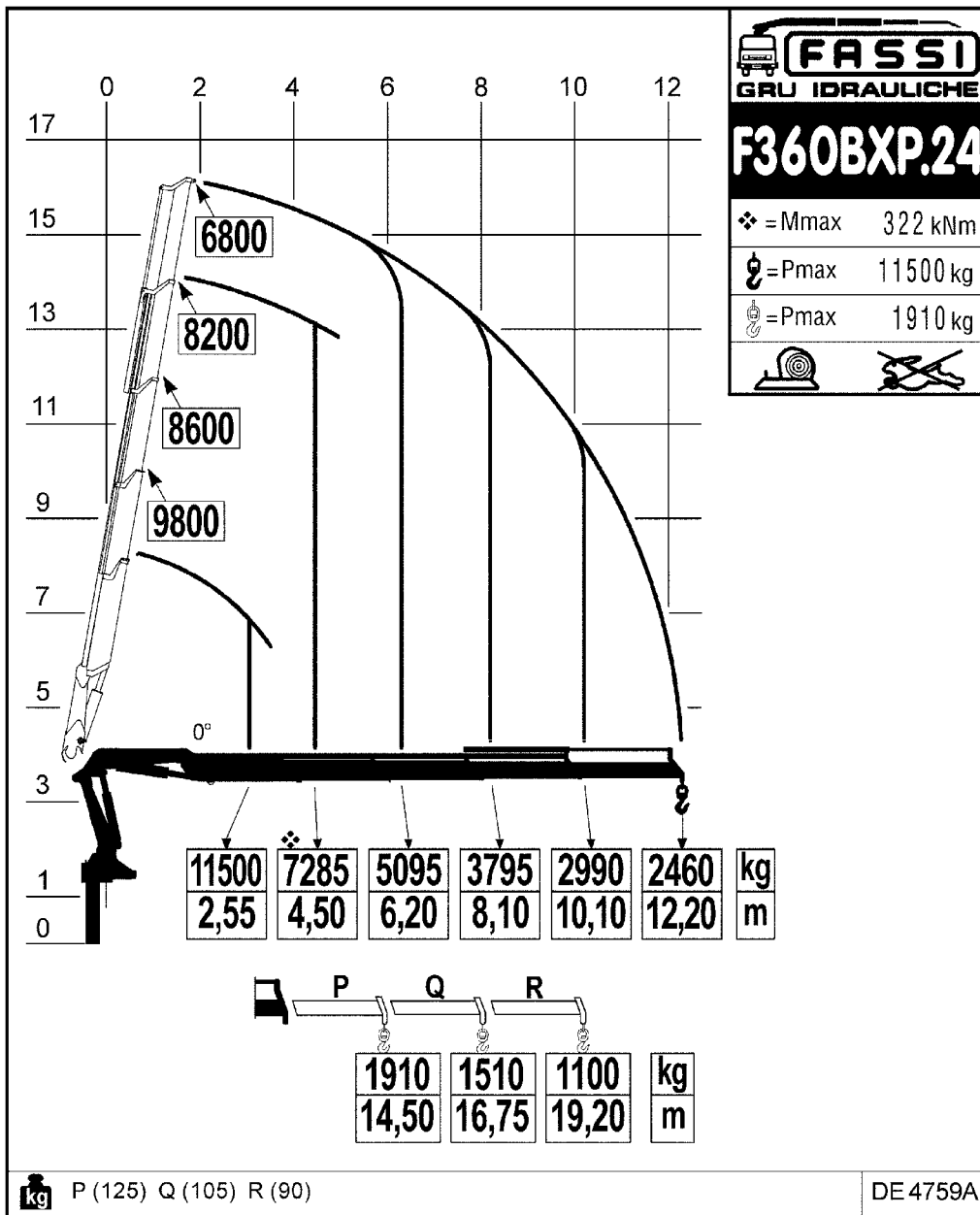
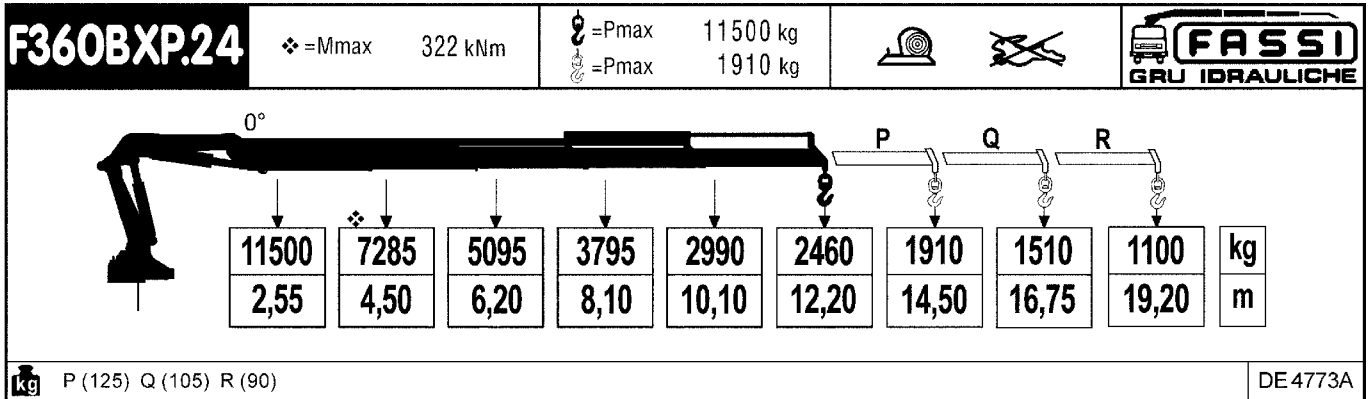
	CRU IDRAULICHE Informazioni tecniche Technische Informationen Technical information Informations techniques Información técnica
	F110A-F450AXP Schema unifilare Verknüpfung elektrischen Schaltplans Unifilar electric schematic Schéma électrique unifilaire Esquema eléctrico monocable
Schema unifilare Schaltplan Schematic Schéma Diagrama Auszage Edition Fecha	ADC_01 01 03/04/15

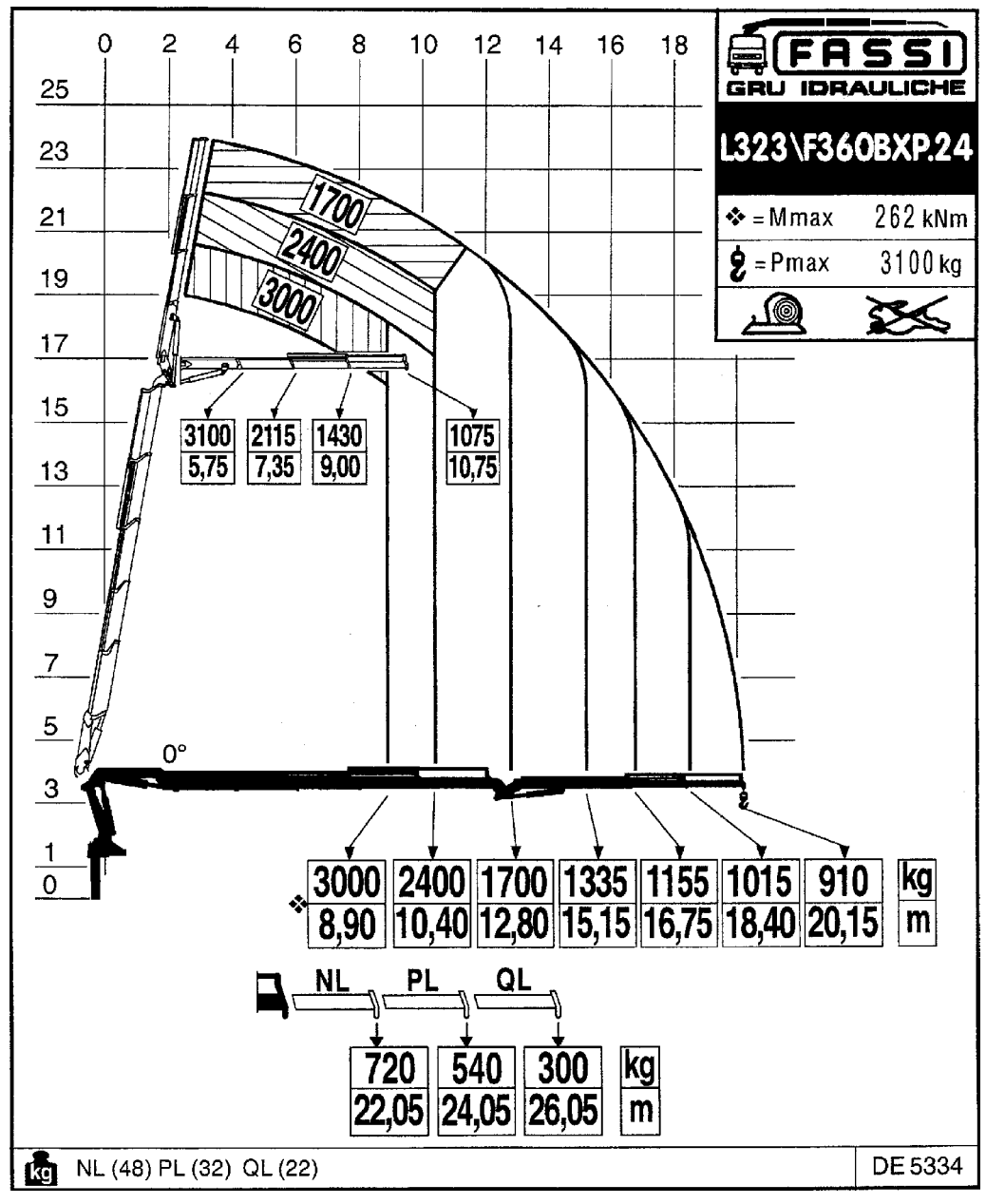
V0 CAPACITY PLATES

The represented plates refer to the nominal design capacities.

(!) WARNING (!)

If the capacities are downgraded or partially reduced (e.g. sector in front of vehicle cab) capacity plates must be applied in line with the final test figures.





kg NL (48) PL (32) QL (22)

DE 5334

