

lbs/ft

**SPECIAL RANGE**



**CERTIFIED  
DYNAMIC  
PERFORMANCE**

*SE SERIE - XS SERIE - T SERIE - S SERIE - K SERIE*

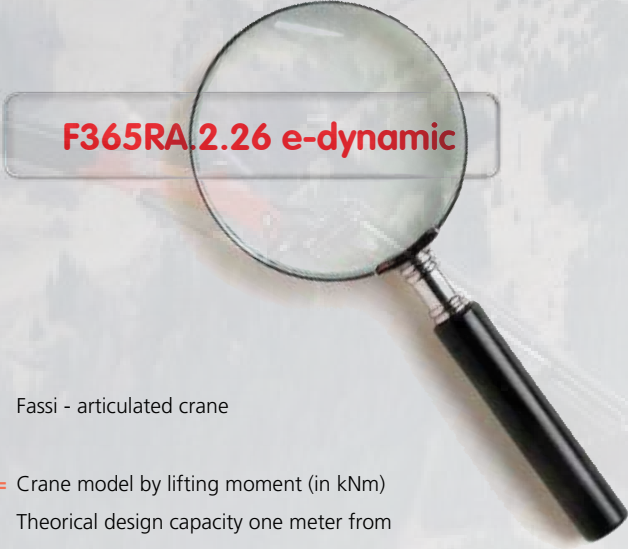
**FASSI**

[www.fassi.com](http://www.fassi.com)

## INDEX

<b>MODEL</b>	<b>PAGE</b>
<b>SE SERIE</b>	<b>5</b>
<b>XS SERIE</b>	<b>6</b>
<b>T SERIE</b>	<b>8</b>
<b>S SERIE</b>	<b>10</b>
<b>K SERIE</b>	<b>12</b>

## CRANE MODELS IDENTIFICATION NAME



**F365RA.2.26 e-dynamic**

- F =** Fassi - articulated crane
- 365 =** Crane model by lifting moment (in kNm)  
Theoretical design capacity one meter from center of column. Example "365" kNm (264005 lbs.ft)
- R =** Continuous rotation (reported only on continuous rotation crane)
- A =** Fassi series. **Single, double or triple letter designation (A,B,C,D,E,G-Z)**. Example: series "A" (1st generation of the same lifting class). The eventual second or third letter identify a special range (ex.:C, F, FM, AS, SE, XS)
- 2 =** Number of linkage: 0-Without linkage; 1-One linkage; 2-Double linkage (on both articulations)
- 26 =** Number of articulations and hydraulic extension booms of the outer boom  
Example: "2" articulations "6" extension Boom
- e-dynamic =** Identification of the crane set-up:  
active; e-active; dynamic; e-dynamic; he-dynamic

## SET UP DESCRIPTION

### **active**

Related to cranes identified by "0", without linkages, dual side manual ground controls, complete with EC safety devices.

### **e-active**

Related to cranes identified by "0", without linkages, one manual ground control, RCH/RCS radio remote control, complete with EC safety devices.

### **dynamic**

Related to cranes identified by "1" and "2", with linkages, dual side manual ground controls, complete with EC safety devices.

### **e-dynamic**

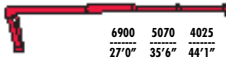
Related to cranes identified by "1" and "2", with linkages, one manual ground control or manual emergency one located on the column side, RCH/RCS radio remote control, eventual XP execution (where available), complete with EC safety devices.

### **he-dynamic**

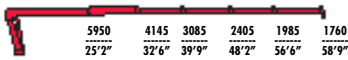
Related to cranes range from F510RA.2 to F1950RA.2, with linkage, continuous rotation, RCH/RCS radio remote control, outriggers controlled by radio remote control, eventual XP execution (where available), complete with EC safety devices.



### F280SE.22



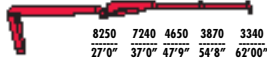
### F330SE.24



### F360SE.24



### F390SE.22



### F390SE.24



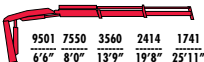
<b>F280SE.22</b>	186732	44'1"	420	34439	3769	16+16	66	8575	8'0"	9'2"
<b>F330SE.24</b>	168485	58'9"	420	34439	3410	16+16	66	10320	8'0"	10'0"
<b>F360SE.24</b>	192728	59'2"	420	34439	4360	16+16	66	10320	8'2"	9'6"
<b>F390SE.22</b>	270868	26'6"	420	49117	4360	16+16	66	12670	8'2"	9'4"
<b>F390SE.24</b>	202524	78'11"	420	49117	4360	16+16	66	13670	8'2"	9'4"



### F95AXS.0.21



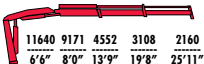
### F95AXS.0.22



### F110AXS.0.21



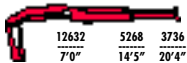
### F110AXS.0.22



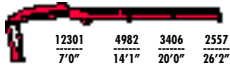
<b>F95AXS.0.21</b>	51644	20'0"	5'10"	390	9148	3410	13	60	2491	7'6"	2'10"	7'2"
<b>F95AXS.0.22</b>	49401	26'6"	12'1"	390	9148	3410	13	60	2755	7'6"	2'10"	7'2"
<b>F110AXS.0.21</b>	65603	20'0"	5'10"	390	10403	3630	13	70	3064	7'6"	3'0"	7'2"
<b>F110AXS.0.22</b>	62638	26'6"	12'1"	390	10403	3630	13	70	3362	7'6"	3'0"	7'2"



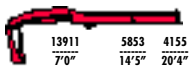
### FI 35 AXS.0.21



### FI 35 AXS.0.22



### FI 55 AXS.0.21



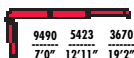
### FI 55 AXS.0.22



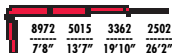
FI 35 AXS.0.21	75947	20'10"	5'10"	390	14018	3410	13	90	3615	7'10"	2'8"	7'3"
FI 35 AXS.0.22	71534	27'2"	12'1"	390	14018	3410	13	90	3924	7'10"	3'2"	7'3"
FI 55 AXS.0.21	84771	20'10"	5'10"	390	14018	3480	13	90	3703	7'10"	2'8"	7'3"
FI 55 AXS.0.22	79635	27'2"	12'1"	390	14018	3480	13	90	4012	7'10"	3'2"	7'3"



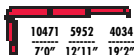
### FI 10AT.12



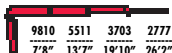
### FI 10AT.13



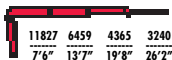
### FI 20ATXP.12



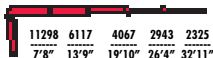
### FI 20ATXP.13



### FI 30AT.13



### FI 30AT.14



<b>FI 00AT.12</b>	70811	19'2"	12'1"	390	12985	4280	11	24	2425	7'8"	2'3"	7'5"
<b>FI 00AT.13</b>	69292	26'2"	18'8"	390	12985	4280	11	24	2601	7'8"	2'3"	7'5"
<b>FI 20ATXP.12</b>	77393	19'2"	12'1"	390	12985	4720	11	24	2380	7'8"	2'3"	7'5"
<b>FI 20ATXP.13</b>	75223	26'2"	18'8"	390	12985	4720	11	24	2601	7'8"	2'3"	7'5"
<b>FI 30AT.13</b>	89183	26'2"	18'8"	390	12985	3920	11	24	3494	8'1"	2'11"	7'11"
<b>FI 30AT.14</b>	87013	32'11"	25'3"	390	12985	3920	11	24	3791	8'1"	3'0"	7'11"





### FI 50ATXP.13

11904	7043	4783	3560
7'6"	13'7"	19'8"	26'2"

### FI 50ATXP.14

11904	6701	4475	3262	2579
7'8"	13'9"	19'10"	26'4"	32'11"

### FI 70AT.13

13337	7892	5368	4001
7'6"	13'7"	19'8"	26'2"

### FI 70AT.14

12852	7484	5004	3648	2888
7'8"	13'9"	19'10"	26'4"	32'11"

### FI 90ATXP.13

13844	8476	5776	4309
7'6"	13'7"	19'8"	26'2"

### FI 90ATXP.14

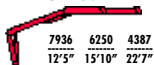
13359	8068	5412	3957	3141
7'8"	13'9"	19'10"	26'4"	32'11"



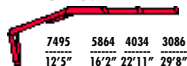
FI 50ATXP.13	95837	26'2"	18'8"	390	12985	4280	11	24	3494	8'1"	2'11"	7'11"
FI 50ATXP.14	92148	32'11"	25'3"	390	12985	4280	11	24	3791	8'1"	3'0"	7'11"
FI 70AT.13	107627	26'2"	18'8"	390	15862	4570	13	24	3593	8'1"	2'11"	7'11"
FI 70AT.14	103215	32'11"	25'3"	390	15862	4570	13	24	3957	8'1"	3'0"	7'11"
FI 90ATXP.13	115005	26'2"	18'8"	390	15862	4860	13	24	3593	8'1"	2'11"	7'11"
FI 90ATXP.14	111316	32'11"	25'3"	390	15862	4860	13	24	3957	8'1"	3'0"	7'11"



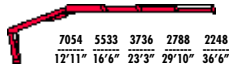
### FI 45 AS.21



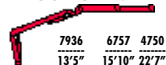
### FI 45 AS.22



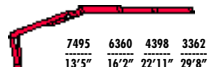
### FI 45 AS.23



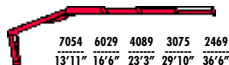
### FI 60 ASXP.21



### FI 60 ASXP.22

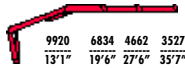


### FI 60 ASXP.23

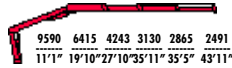


FI 45 AS.21	99526	22'11"	6'8"	416	15862	4280	10+10	63	4298	2450	3'7"	7'9"	
FI 45 AS.22	95114	29'10"	13'5"	416	15862	4280	10+10	63	4574	2450	3'7"	7'9"	
FI 45 AS.23	91425	36'8"	20'0"	416	15862	4280	10+10	63	4850	2450	3'7"	7'9"	
FI 60 ASXP.21	107627	22'11"	6'8"	416	15862	4570	10+10	63	4298	2450	3'7"	7'9"	
FI 60 ASXP.22	103215	29'10"	13'5"	416	15862	4570	10+10	63	4574	2450	3'7"	7'9"	
FI 60 ASXP.23	99526	36'8"	20'0"	416	15862	4570	10+10	63	4850	2450	3'7"	7'9"	

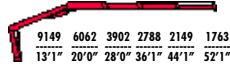
### F195AS.22



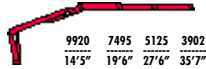
### F195AS.23



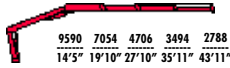
### F195AS.24



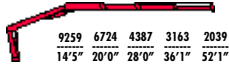
### F210ASXP.22



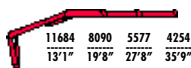
### F210ASXP.23



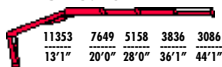
### F210ASXP.24



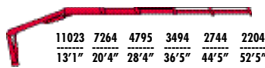
### F215AS.22



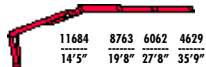
### F215AS.23



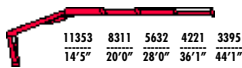
### F215AS.24



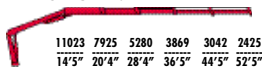
### F240ASXP.22



### F240ASXP.23



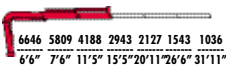
### F240ASXP.24



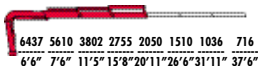
Model	Weight	Height	Width	Depth	Length	Height	Width	Depth	Weight	Height	Width	Depth
F195AS.22	133449	36'5"	16'0"	420	24346	3920	13+13	63	5996	2540	3'9"	7'11"
F195AS.23	127590	44'9"	24'1"	420	24346	3920	13+13	63	6437	2540	3'9"	7'11"
F195AS.24	121659	52'11"	32'1"	420	24346	3920	13+13	63	6878	2540	3'9"	7'11"
F210ASXP.22	134172	36'5"	16'0"	420	24346	4350	13+13	63	5996	2540	3'9"	7'11"
F210ASXP.23	128313	44'9"	24'1"	420	24346	4350	13+13	63	6437	2540	3'9"	7'11"
F210ASXP.24	128313	44'9"	24'1"	420	24346	4350	13+13	63	6878	2540	3'9"	7'11"
F215AS.22	159271	36'5"	16'0"	420	24715	4430	13+13	63	6305	2540	3'9"	7'11"
F215AS.23	152616	44'9"	24'1"	420	24715	4430	13+13	63	6746	2540	3'9"	7'11"
F215AS.24	147481	52'11"	32'1"	420	24715	4430	13+13	63	7186	2540	3'9"	7'11"
F240ASXP.22	172507	36'5"	16'0"	420	24715	4720	13+13	63	6305	2540	3'9"	7'11"
F240ASXP.23	166648	44'9"	24'1"	420	24715	4720	13+13	63	6746	2540	3'9"	7'11"
F240ASXP.24	160717	52'11"	32'1"	420	24715	4720	13+13	63	7186	2540	3'9"	7'11"



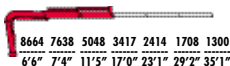
### F65AK.0.21



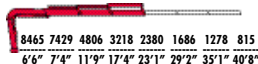
### F65AK.0.22



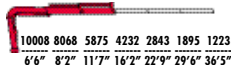
### F80AK.0.21



### F80AK.0.22



### F95AK.0.21

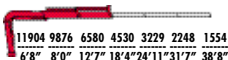


### F95AK.0.22

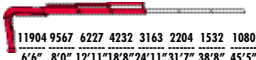


<b>F65AK.0.21</b>	45568	15'10"	370	7230	3770	5	16	1631	2255	2'3"	6'3"
<b>F65AK.0.22</b>	43760	21'3"	370	7230	3770	5	16	1807	2255	2'3"	6'3"
<b>F80AK.0.21</b>	58226	17'8"	370	8632	4350	5	16	1997	2215	2'8"	6'5"
<b>F80AK.0.22</b>	56779	23'7"	370	8632	4350	5	16	2228	2215	2'8"	6'5"
<b>F95AK.0.21</b>	68714	16'8"	390	12985	2910	7	16	2350	2335	2'9"	7'2"
<b>F95AK.0.22</b>	66182	23'3"	390	12985	4210	7	16	2623	2335	2'9"	7'2"

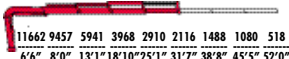
### FI 10AK.0.21



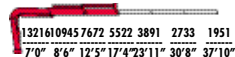
### FI 10AK.0.22



### FI 10AK.0.23



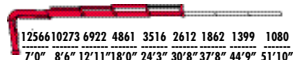
### FI 35AK.0.21



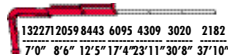
### FI 35AK.0.22



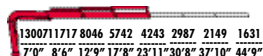
### FI 35AK.0.23



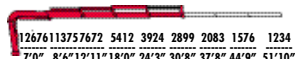
### FI 55AK.0.21



### FI 55AK.0.22

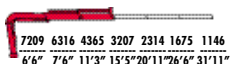


### FI 55AK.0.23

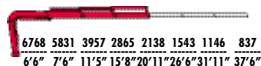


<b>FI 10AK.0.21</b>	83180	19'0"	390	12985	4350	8	18	3130	2345	2'11"	7'2"
<b>FI 10AK.0.22</b>	80648	25'7"	390	12985	4350	8	18	3414	2245	2'11"	7'2"
<b>FI 10AK.0.23</b>	85349	32'3"	390	12985	4350	8	18	3681	2245	2'11"	7'2"
<b>FI 35AK.0.21</b>	96199	18'2"	390	15862	4140	11	24	3564	7'10"	3'2"	7'3"
<b>FI 35AK.0.22</b>	93306	24'7"	390	15862	4140	11	24	3893	7'10"	3'2"	7'3"
<b>FI 35AK.0.23</b>	89689	31'5"	390	15862	4140	11	24	4215	7'10"	3'2"	7'3"
<b>FI 55AK.0.21</b>	105963	18'2"	390	15862	4210	11	24	3582	7'10"	3'2"	7'3"
<b>FI 55AK.0.22</b>	103070	24'7"	390	15862	4210	11	24	3910	7'10"	3'2"	7'3"
<b>FI 55AK.0.23</b>	99454	31'5"	390	15862	4210	11	24	4232	7'10"	3'2"	7'3"

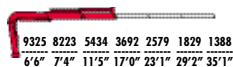
### F70AK.0.21



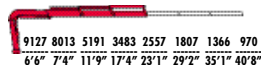
### F70AK.0.22



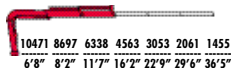
### F90AK.0.21



### F90AK.0.22



### F105AK.0.21

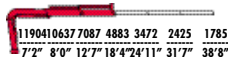


### F105AK.0.22

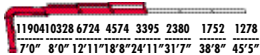


<b>F70AK.0.21</b>	49184	15'10"	370	7230	4060	5	16	1631	7'3"	2'3"	6'3"
<b>F70AK0.22</b>	45568	21'3"	370	7230	4060	5	16	1807	7'3"	2'3"	6'3"
<b>F90AK.0.21</b>	62638	17'0"	370	8632	4640	5	16	2006	7'2"	2'8"	6'5"
<b>F90AK.0.22</b>	61191	23'1"	370	8632	4640	5	16	2237	7'2"	2'8"	6'5"
<b>F105AK.0.21</b>	74138	16'8"	390	12985	4500	5	16	2403	7'6"	2'9"	7'2"
<b>F105AK.0.22</b>	71607	23'3"	390	12985	4500	5	16	2623	7'6"	2'9"	7'2"

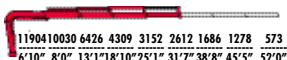
### FI 20AK.0.21



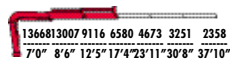
### FI 20AK.0.22



### FI 20AK.0.23



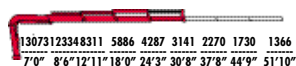
### FI 60AK.0.21



### FI 60AK.0.22



### FI 60AK.0.23



<b>FI 20AK.0.21</b>	89689	19'0"	390	12985	4640	8	18	3130	7'3"	2'11"	7'2"
<b>FI 20AK.0.22</b>	87158	25'7"	390	12985	4640	8	18	3417	7'3"	2'11"	7'2"
<b>FI 20AK.0.23</b>	84264	32'3"	390	12985	4640	8	18	3681	7'3"	2'11"	7'2"
<b>FI 60AK.0.21</b>	114281	18'2"	390	15862	4500	10	24	3626	7'10"	3'2"	7'3"
<b>FI 60AK.0.22</b>	111388	24'7"	390	15862	4500	10	24	3979	7'10"	3'2"	7'3"
<b>FI 60AK.0.23</b>	107772	31'5"	390	15862	4500	10	24	4321	7'10"	3'2"	7'3"

## SYMBOLS

Lifting Capacity (lbs.ft)	
Standard reach (ft)	
Hydraulic extension (ft)	
Rotation (°)	
Rotation torque (lbs.ft)	
Working pressure (psi)	
Pump capacity (gpm)	
Oil tank capacity (gal)	
Crane weight (lbs)	
Crane length (ft)	
Crane width (ft)	
Crane height (ft)	





**CRANES WITHOUT COMPROMISE**



**FASSI GRU S.p.A.**

**24021 Albino (Bergamo) ITALY - via Roma,110**

**Tel. +39 035 776400 - Fax +39 035 755020**

**<http://www.fassi.com>**

**e-mail: [fassi@fassi.com](mailto:fassi@fassi.com)**